

## Section 7.0 – Watershed Development

### Section 7.1 – The Watershed Community<sup>1</sup>

#### Introduction:

The Community Planning Service Portage la Prairie regional office was asked to provide data to the LaSalle Watershed Planning Authority for use in a background study related to the development of an integrated watershed plan. This document describes data provided to the LaSalle Watershed Planning Authority by the Portage la Prairie regional office.

#### Spatial Context:

The Government of Manitoba, Intergovernmental Affairs, Community Planning Services regional office in Portage la Prairie provides planning related services to 21 municipalities (See Figure 1).

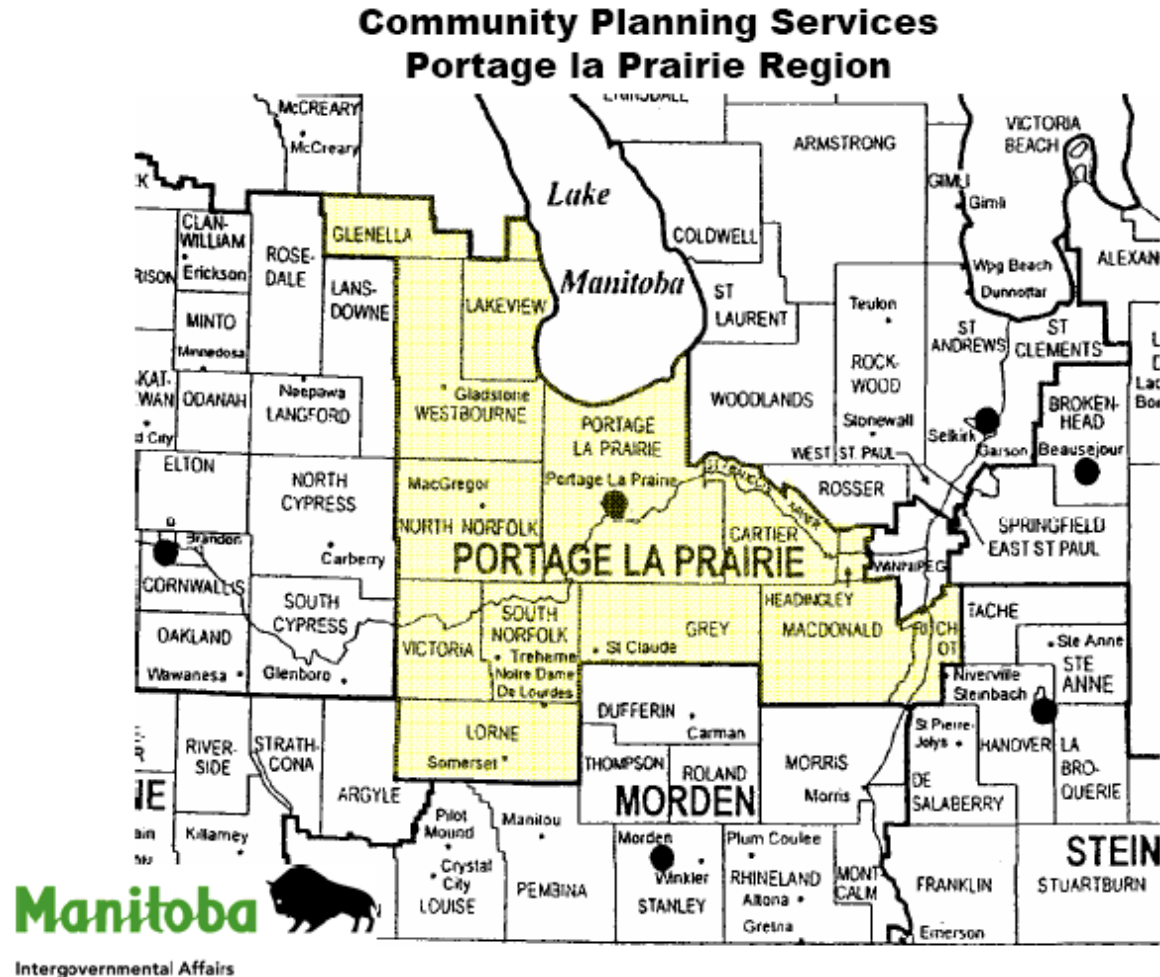


Figure 1 -Portage la Prairie Regional Office

<sup>1</sup> Statistical demographic information can be found in Section 7.1.2

## Section 7.0 – Watershed Development

The boundaries of the three sub-districts of the La Salle Redboine Conservation District fall almost entirely within municipalities serviced by the Portage la Prairie regional office (See Figure 2).

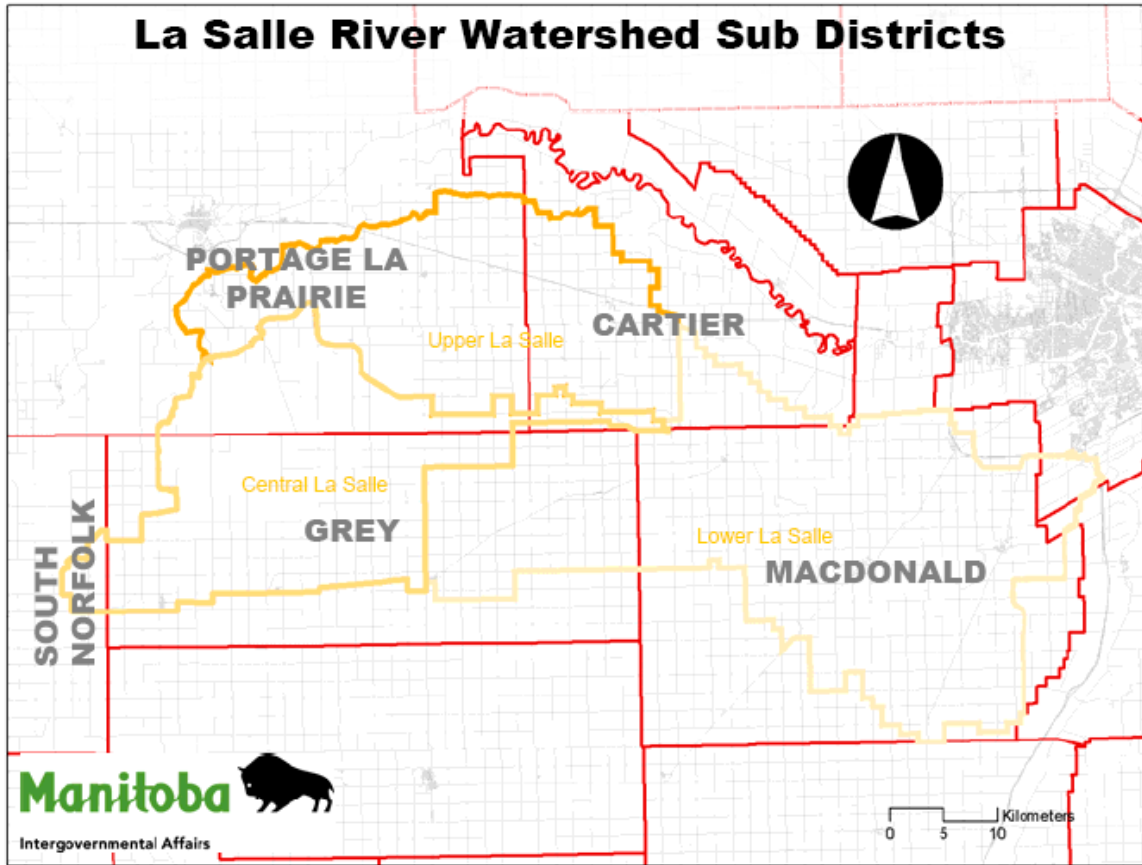


Figure 2 - LSRBCD Location

## Section 7.0 – Watershed Development

### Statistics Canada Data:

Demographic data related to each watershed sub-district has been provided to the Water Planning Authority in two formats: HTM and Microsoft Excel. These files contain Statistics Canada Census data queried for each watershed sub-district using the PCensus product. Population trend analysis generated by PCensus was also included in the delivery package (LSRBCD\_Demographics.HTM & LSRBCD\_Demographics.XLS).

Care should be taken when using PCensus data for analysis purposes as the accuracy of such data is not available. The method by which the PCensus product aggregates population counts into choropleth boundaries has not been verified. In addition, the method used to project 2001 population counts to 2006 and beyond is also not available and therefore, the reliability of such data is not known (See Figure 3)

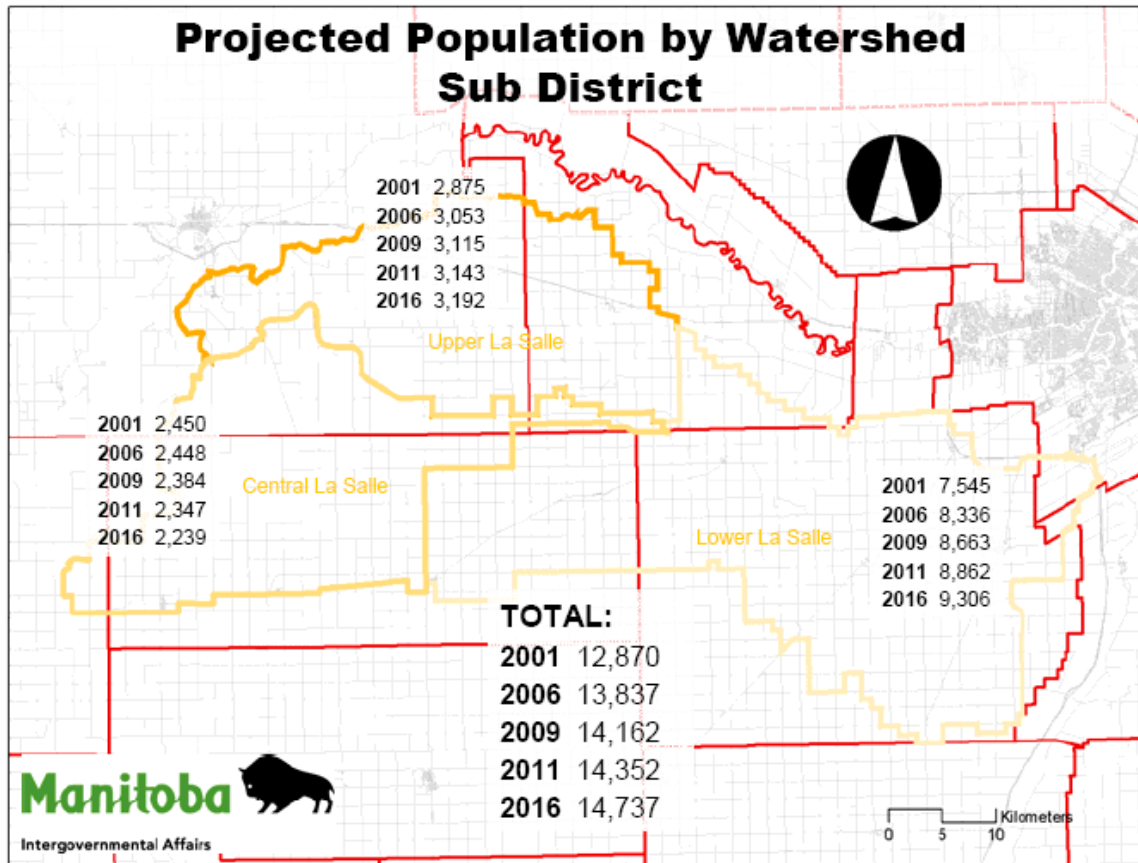


Figure 3 - Population Projections by Sub-District

It should be noted that dwelling counts generated from the PCensus product will differ from dwelling counts derived from the DwellingUnits shapefile provided with the delivery package. The method used by PCensus to generate dwelling count projections to 2006 and beyond is not available, and caution should be exercised when using this data for analysis purposes.

Section 7.0 – Watershed Development

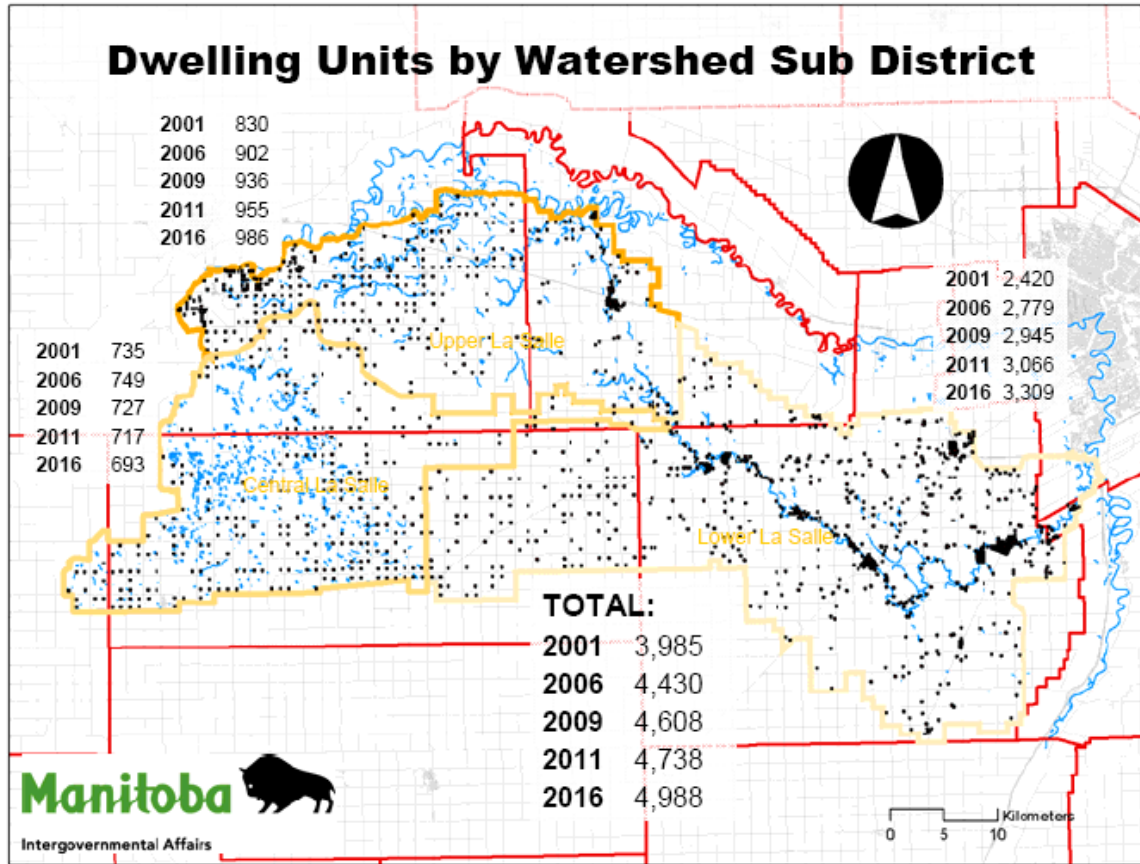


Figure 4 – Dwelling Units from PCensus

## **Section 7.0 – Watershed Development**

### *By-Laws:*

#### *Development Plan:*

The purpose of a Development Plan is to provide policies and regulations based upon community goals and objectives for the conservation and use of community resources and the orderly and economic development of the Planning District.

The Community Planning Services Portage la Prairie regional office does not currently have any development plan maps available in a format suitable for GIS. Maps in PDF or hardcopy may be made available upon request.

#### *Zoning:*

The purpose of a Zoning By-law is to ensure general conformance with the objectives and policies of the Development Plan and regulate the use of land.

The Community Planning Services Portage la Prairie regional office does not currently have any zoning maps available in a format suitable for GIS. Maps in PDF or hardcopy may be made available upon request.

## Section 7.0 – Watershed Development

### *Livestock Operations:*

The general location of known livestock operation structures within the boundaries of the LSRBCD has been provided in shapefile format (farmstructures.shp). This data has been derived from a database maintained by Government of Manitoba Assessment Services. Each point represents the centroid location of each section containing a structure related to a farming operation. While this data is not accurate enough to perform detailed site specific analysis, it is provided in sufficient accuracy to support watershed-wide analysis.

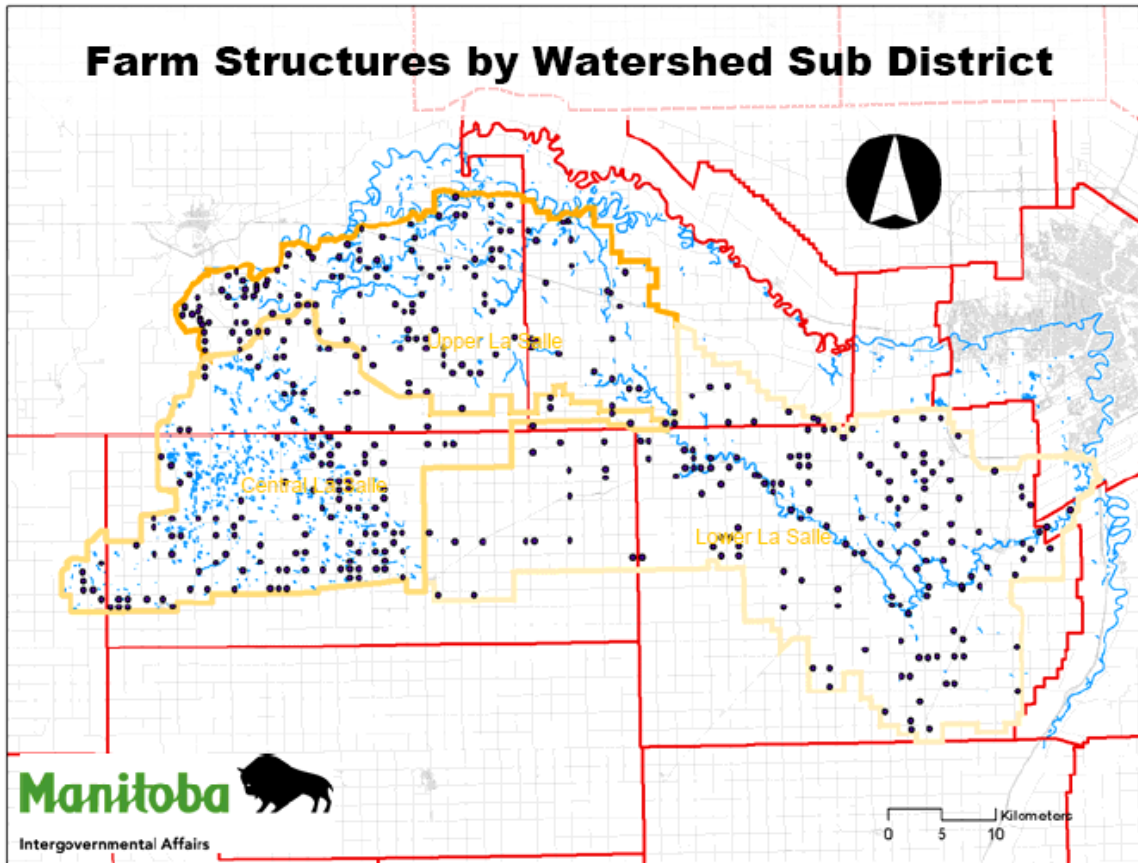


Figure 5 - Farm Structures



## Section 7.0 – Watershed Development

### *Dwelling Units:*

The general location of known dwellings within the boundaries of the LSRBCD has been provided in Shapefile format (dwellingunits.shp). This data has been derived from a database maintained by Government of Manitoba Assessment Services. Each point represents the centroid location of each section containing a dwelling unit. While this data is not accurate enough to perform detailed site specific analysis, it is provided in sufficient accuracy to support watershed-wide analysis.

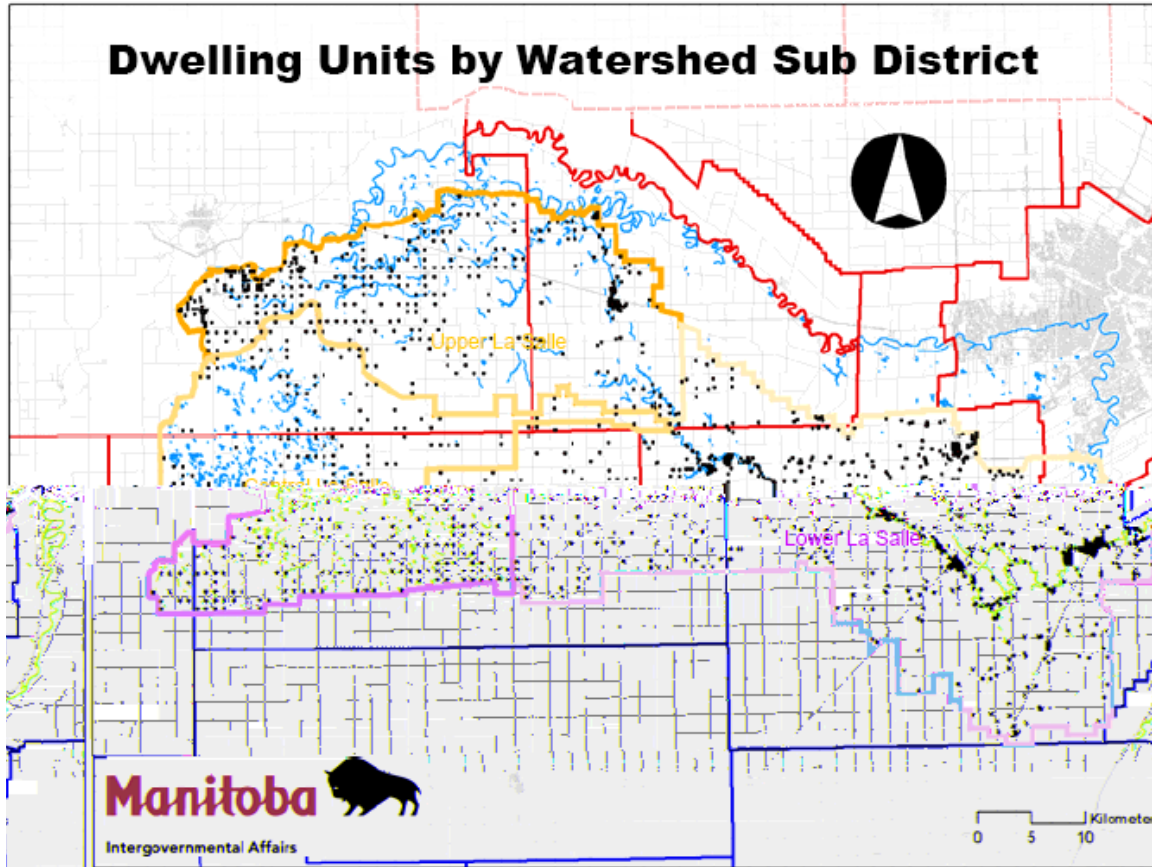
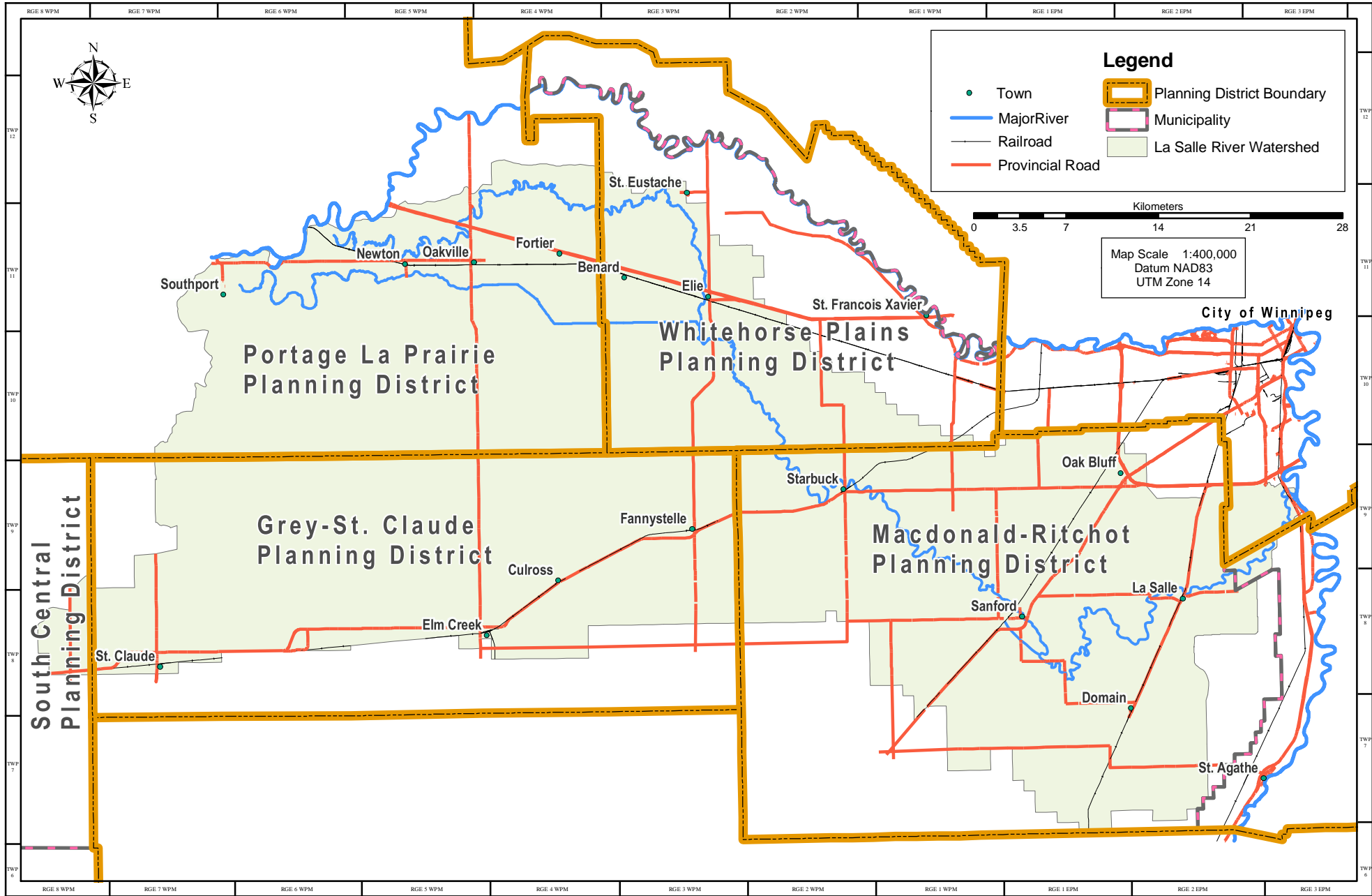


Figure 6 - Dwelling Units from Assessment Database

**SECTION 7.1.4**

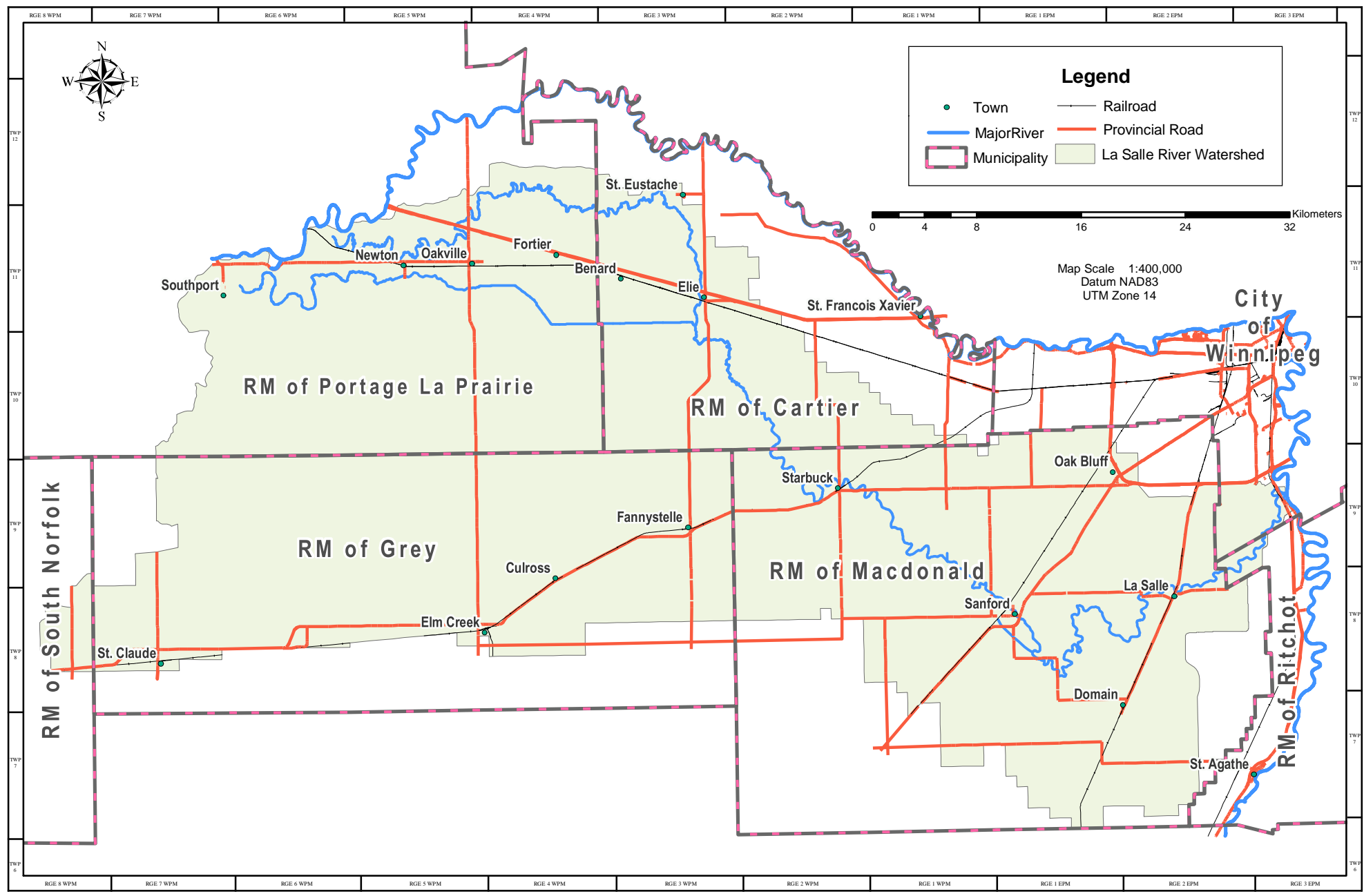
# Planning Districts within the La Salle River Watershed





**SECTION 7.1.3**

# Municipalities within the La Salle River Watershed



Source: Manitoba Land Initiative, La Salle Redboine Conservation District