



Environment and Climate Change

Parks and Trails Division

Parks Branch

258 Portage Ave. 4th Floor

Winnipeg MB R3C 0B6

**RE: Director's Order – Nopiming, Wallace Lake and South Atikaki
Provincial Parks Closure**

Be it resolved that it is imperative that an issuance of a Director's Order, as Director of Parks, by way of section 27(1) of *The Provincial Parks Act*, is necessary to implement specific closures in provincial parks.

Due to significant risks associated with out-of-control wildfires adjacent to and within Nopiming, Wallace Lake and South Atikaki Provincial Parks, an ongoing Closure Order is required for these Parks - please see the attached Closure Areas map.

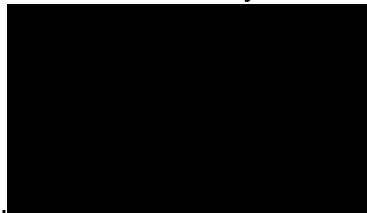
This new Closure Order will come into effect on Friday, June 27th, 2025, at 8 am.

During the period of the closure, no person should reside in or enter the parks closure areas unless otherwise authorized by Manitoba Parks.

This Director's Order under *The Provincial Parks Act* is in effect until such time as it is rescinded.

Be it further resolved that the below Director's Order for the closure of Nopiming, Wallace Lake, South Atikaki and Manigotagan River Provincial Parks, as issued on June 17th, 2025, is rescinded once this new Closure Order is effective.

Dated the 25th day of June 2025



Rob Nedotiatko

Director, Manitoba Parks

RE: Director's Order – Nopiming, Wallace Lake, South Atikaki and Manigotagan River Provincial Parks Closure

Be it resolved that it is imperative that an issuance of a Director's Order, as Director of Parks, by way of section 27(1) of *The Provincial Parks Act*, is necessary to implement specific closures in provincial parks.

Due to significant risks associated with out-of-control wildfires adjacent to and within Nopiming, Wallace Lake, South Atikaki and Manigotagan River Provincial Parks, an ongoing closure Order is required for these Parks - please see the attached Closure Areas map.

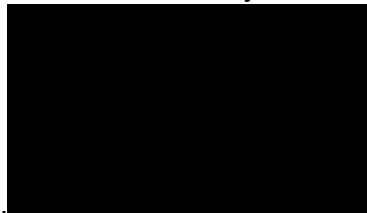
This new closure Order will come into effect on Wednesday, June 18th, 2025, at 8 am.

During the period of the closure, no person should reside in or enter the parks closure areas unless otherwise authorized by Manitoba Parks.

This Director's Order under *The Provincial Parks Act* is in effect until such time as it is rescinded.

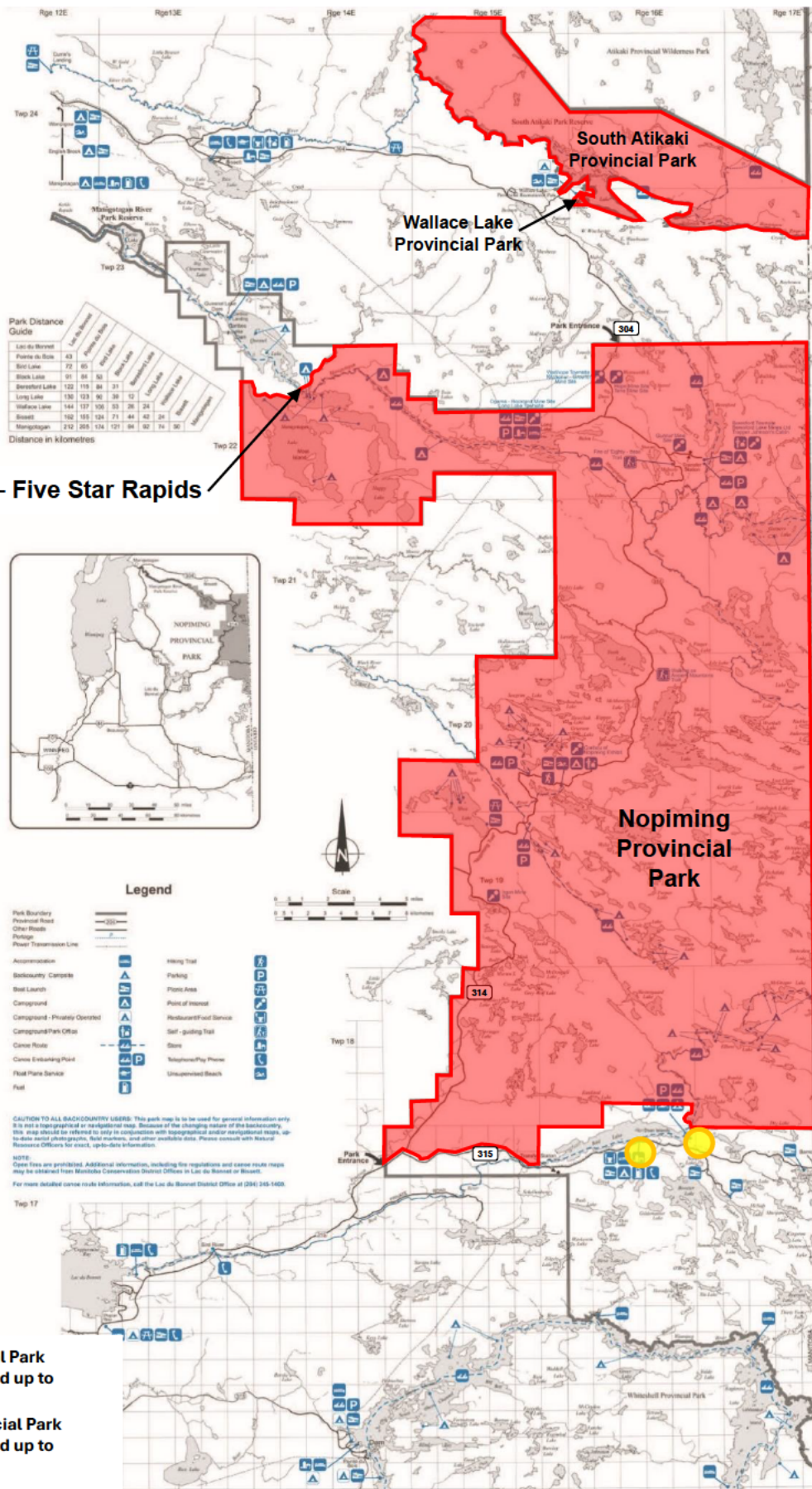
Be it further resolved that that the below Director's Order for the closure and evacuation of Nopiming, Wallace Lake, South Atikaki and Manigotagan River Provincial Parks, as issued on May 13th, 2025, is rescinded once this new closure order is effective.

Dated the 17th day of June 2025



Rob Nedotiatko
Director, Manitoba Parks

Closure Point – Five Star Rapids



- Bird Lake Provincial Park Campground closed up to Thursday, July 10th
- Tulabi Falls Provincial Park Campground closed up to Monday, August 4th

Nopiming, Wallace Lake and South Atikaki Provincial Parks Closure Areas

This Closure Order will come into effect on Friday, June 27th, 2025, at 8 am.