



Environment and Climate Change
Parks and Trails Division
Parks Branch
258 Portage Ave. 4th Floor
Winnipeg MB R3C 0B6

RE: Director's Order – Whiteshell Provincial Park Closure

Be it resolved that it is imperative that an issuance of a Director's Order, as Director of Parks, by way of section 27(1) of *The Provincial Parks Act*, is necessary to implement specific closures in provincial parks.

Due to the effects of recent wildfires within Whiteshell Provincial Park, an ongoing Closure Order is required for certain areas of the Park, including:

- The Mantario Wilderness Area

Please see the attached Whiteshell Provincial Park Closure Area map.

This new Closure Order will come into effect and allow for the reopening of the following areas of the Park:

- The Whiteshell River Water Route, from the second tunnel at North Cross Lake through to Little Whiteshell Lake, on Friday, June 27th, 2025, at 8 am

During the period of the closure, no person should reside in or enter the park closure area unless otherwise authorized by Manitoba Parks.

This Director's Order under *The Provincial Parks Act* is in effect until such time as it is rescinded.

Be it further resolved that the below Director's Order for the closure of Whiteshell Provincial Park, as issued on June 10th, 2025, is rescinded once this new Closure Order is effective.

Dated the 25th day of June 2025



Director, Manitoba Parks

RE: Director's Order – Whiteshell Provincial Park Closure

Be it resolved that it is imperative that an issuance of a Director's Order, as Director of Parks, by way of section 27(1) of *The Provincial Parks Act*, is necessary to implement specific closures in provincial parks.

Due to significant risks associated with out-of-control wildfires adjacent to and within Whiteshell Provincial Park, an ongoing closure Order is required for certain areas of the Park, including:

- The Mantario Wilderness Area

Please see the attached Whiteshell Provincial Park Closure Area map.

This new closure Order will come into effect for the following areas of the Park:

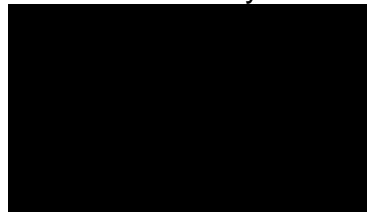
- Crowduck Lake and Big Whiteshell Lake on Wednesday, June 11th, 2025, at 8 am
- Florence Lake, Nora Lake and Ophir Siding on Wednesday, June 11th, 2025, at 4 pm.

During the period of the closure, no person should reside in or enter the park closure area unless otherwise authorized by Manitoba Parks.

This Director's Order under *The Provincial Parks Act* is in effect until such time as it is rescinded.

Be it further resolved that that the below Director's Order for the closure and evacuation of Whiteshell Provincial Park, as issued on June 4th, 2025, is rescinded once this new closure order is effective.

Dated the 10th day of June 2025



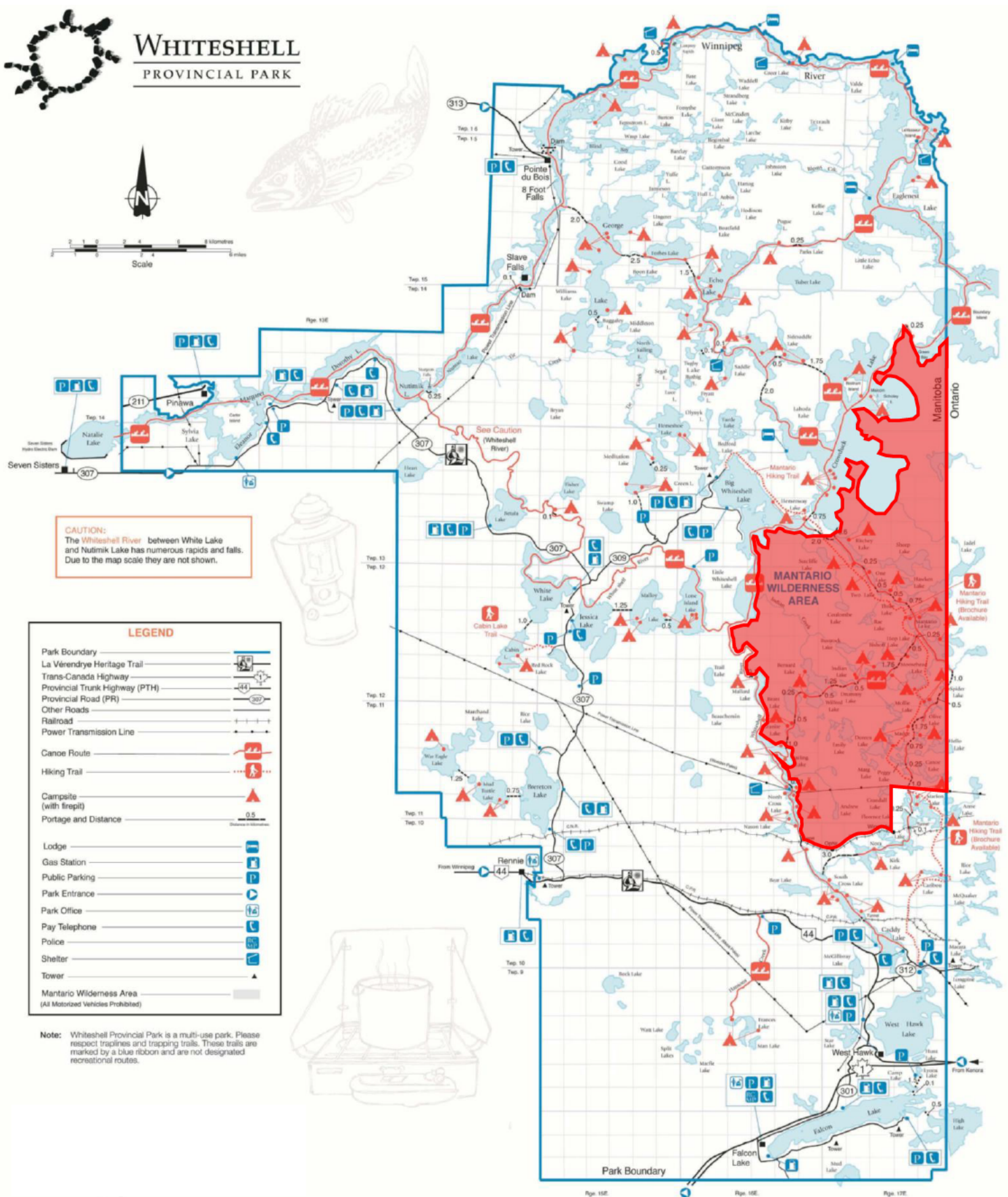
Director, Manitoba Parks



WHITESHELL PROVINCIAL PARK



Scale
0 1 2 3 4 5 Kilometers
0 1 2 3 4 5 Miles



Whiteshell Provincial Park Closure Area

This new Closure Order will come into effect and allow for the reopening of the following areas of the Park:

- The Whiteshell River Water Route, from the second tunnel at North Cross Lake through to Little Whiteshell Lake, on Friday, June 27th, 2025, at 8 am