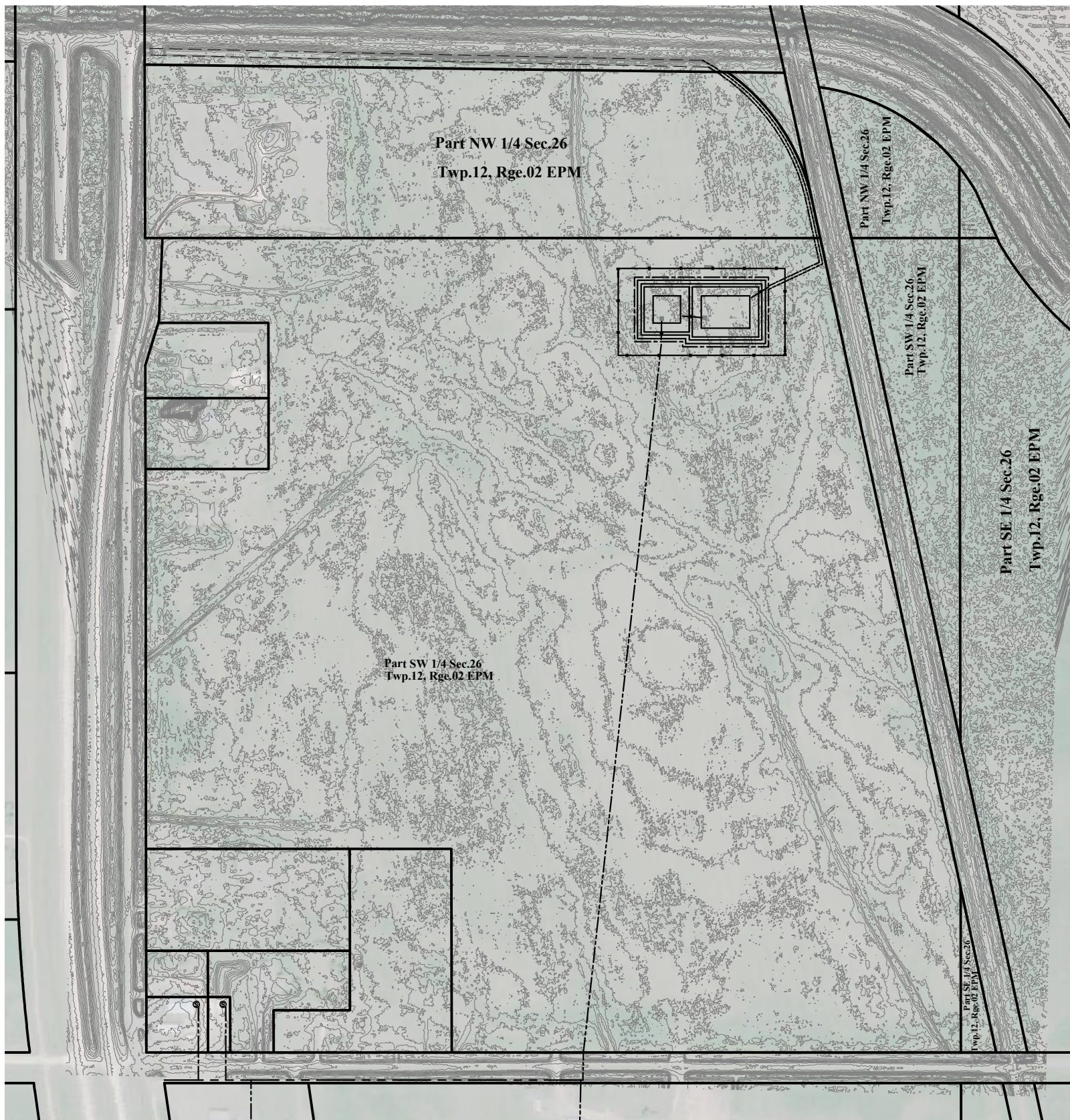


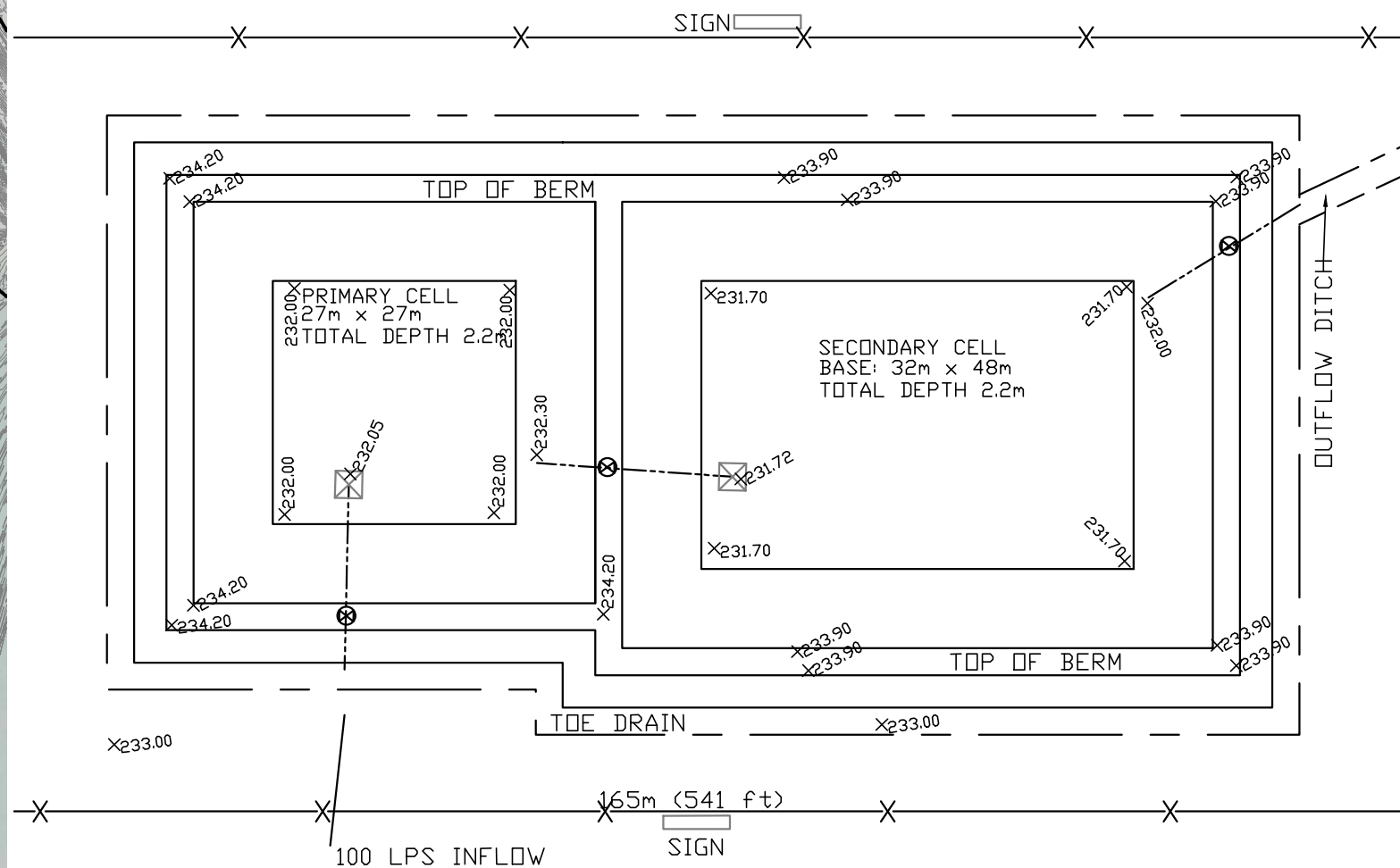
# LAGOON & SERVICING OVERALL VIEW

SCALE 1:5000



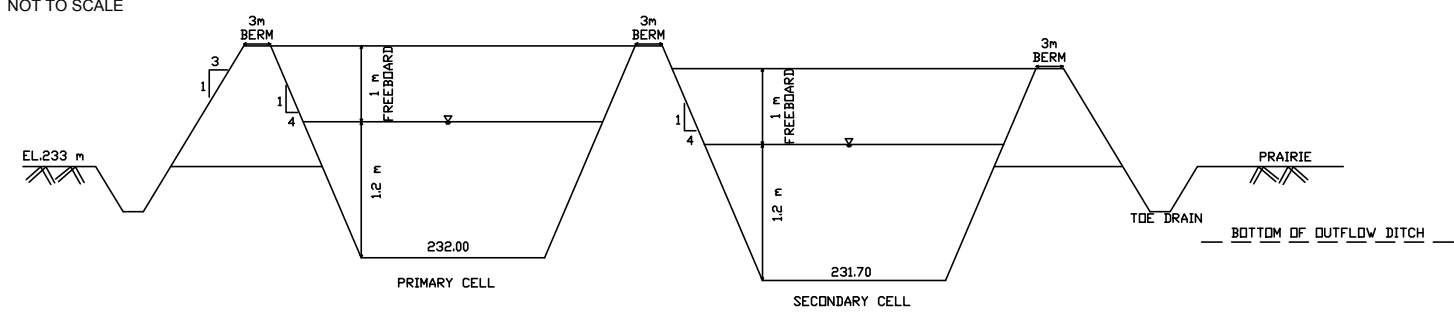
# LAGOON PLAN VIEW

SCALE 1:750



# LAGOON CELL SECTIONS

NOT TO SCALE



### General Notes

- Elevations based on lidar NAD 83 UTM Zone 14. Accuracy of elevations may vary and will be confirmed by survey upon final design.
- Existing underground utility locations may vary from shown. Contractor to confirm.

METRIC WHOLE NUMBERS INDICATE MILLIMETRES  
DECIMALIZED NUMBERS INDICATE METRES

PROPERTY BOUNDARY	WATER LINE	T.B.M. NE BOLT ON SIGN BASE
BUILDING	DOMESTIC WELL	ELEV. 234.50
RETAINING WALL	VALVE	
EDGE OF ROAD	SEPTIC / HOLDING TANK LID	
DITCH &	LOW PRESSURE SEWER PIPE	
GAS	M.T.S.	
HYDRO	GRAY WATER DISTRIBUTION	
CULVERT	MANHOLE	
232.20 ELEVATION	CURB STOP	
232.20 DITCH/SWALE ELEVATION	PLUG	
GRADING SLOPE -0.5%	HYDRO POLE AND ANCHOR	
EXISTING LEGEND-PLAN	PROPOSED LEGEND-PLAN	NO. REVISIONS

**Jme** WORLD CONSULTANTS  
 JME World Consultants  
 www.jme-consultants.com  
 255B Main St  
 Selkirk, MB, R1A 1S1  
 204-330-1773

DESIGNED: JAM  
 DRAWN: JAM  
 HOR. SCALE: AS NOTED  
 DATE DRAWN: JUN 27, 2018

PROJECT NUMBER: 180504  
 DATE OF SURVEY: JUN 18, 2018

PRELIMINARY -  
 NOT FOR CONSTRUCTION  
 C-100

**PEGM**  
 Certificate of Authorization  
 JESSICA MANNES ENGINEERING, INC.  
 No. 5834

**RM OF ROSSER**  
**WASTEWATER LAGOON**

ABAS GIRLS RANCH  
 AS NOTED IN PLAN  
 ROAD 70N  
 RM OF ROSSER

SHEET 1 OF 1  
 CAD FILE DRAWING NAME: JME-ABAS NORTH LAGOON  
 DRAWING NUMBER: -