

May 24, 2019

Client File No. 5719.00
Licence No. 3207

Ms. Tracey Braun
Director
Environmental Approvals
Manitoba Sustainable Development
1007 Century Street
Winnipeg, MB R3H 0W4

Dear Ms. Braun:

RE: Notice of Alteration for the St. Vital Transmission Complex Project

Manitoba Hydro received an *Environment Act* Licence (No. 3207) for the above noted project on January 30, 2017. This letter serves to request an alteration to the project.

Manitoba Hydro is proposing to alter the Project by two route adjustments as follows:

1) SW 28-8-4-E (Figure 1; Map 1)

The proposal is to adjust the route to increase the distance from an adjacent house. The landowner requested the change. The proposed adjustment is entirely on the same landowner's property.

The proposed change will shorten the route by approximately 148 m. There will be two angle towers instead of one angle tower and two suspension towers. Changes to the potential effects of the project (Table 1) relate to the agricultural land use and communities valued components discussed below.

Agricultural Land Use

The adjustment will have a smaller overall footprint on agricultural land but will increase the amount of diagonal crossing of farmland (~300 m of farmland crossed diagonally). Diagonal crossing of farmland tends to increase the nuisance / inconvenience of having a transmission line on farmland. Due to the small overall footprint of the proposed change and the fact that the landowner who is affected requested the change, the proposed change should have an overall neutral to positive effect on agricultural land use.

Communities

The communities valued component considered how changes to aesthetics could cause changes to the health and well-being of community members. The proposed change will improve the aesthetics of one homeowner and should not alter the overall aesthetics for any other community members.



Figure 1: Proposed alteration of V78G in SW 28-8-4-E (green is current. Red hatch is proposed adjustment).

Summary

The proposed change does not change any conclusions of the environmental assessment.

Table 1: Summary of potential changes to valued components

Valued Component	Potential change in effects
Atmospheric Environment	No change
Groundwater Resources	No change
Aquatic resources	No change
Wildlife	No change

Natural vegetation	No change
Traditional land and resource use	No change
Infrastructure and services	No change
Employment and economy	No change
Property and residential development	No change
Agricultural land use	Smaller overall footprint. Increase in diagonal crossing of farmland. Net neutral.
Non-agricultural land use	No change
Communities	Improvement on aesthetics to one homeowner, otherwise no change.
Heritage resources	No change

2) SW 20-9-4-E (Figure 2; Map 2)

The proposal is to move the current alignment to the west to move away from a large shelterbelt (Figure 2; photo 1; Map 2) in order to reduce the amount of tree clearing required in the area. The adjustment will be a bow shape with the maximum distance from existing being approximately 15 m west.

The shelterbelt (~540 m in length) is currently within the right-of-way and will have to be cleared. The adjustment will allow the shelterbelt to remain intact. There is a smaller shelterbelt in NW 17-9-4E (Figure 3; Photo 2) that would also be removed with the current alignment, but will remain intact with the proposed adjustment.

There will be no change to the length of the route (the current and proposed segments are 2805 m) or the number of towers. Changes to the potential effects of the project (Table 2) relate to the agriculture land use, communities and wildlife valued components, discussed below.

Several landowners will be affected by the change, but all have been contacted and there are no concerns with the new alignment.

Agricultural Land Use

The effects assessment on agricultural land use considered loss / alteration of

agricultural land, nuisance effects, and reduced yield. The adjustment will have the same overall footprint on agricultural land. There will be an increase in the footprint on cropland which will cause a loss / alteration. However, by leaving the shelterbelt intact, this should have a positive effect on adjacent lands as shelterbelts can reduce soil erosion. There is likely no net change in the potential effects to agricultural land use.

Communities

The communities valued component considered how changes to aesthetics could cause changes to the health and well-being of community members. Shelterbelts can provide a visual barrier and be aesthetically pleasing. The proposed change should improve the overall aesthetics of the area and will result in better visual shielding of the line from adjacent homes.

Wildlife

Shelterbelts can provide some wildlife habitat. As discussed in the Environmental assessment report (Section 6.3.2.3.2 Raptors; page 6-15):

“Many raptor species utilizing habitats within the Project Area are tree nesting species but often forage in the open surrounding areas. As open, agricultural land cover dominates the area, nesting sites are most likely chosen within treed bluffs, shelterbelts and mature trees along some of the major watercourses such as the Red River, Rat River and Seine River.”

The shelterbelts may provide habitat for other wildlife as well. Moving the proposed route to the west will leave two shelterbelts intact, which will reduce the overall amount of wildlife habitat altered by the project.

Summary

The proposed change does not change any conclusions of the environmental assessment.



Figure 2: Proposed alteration to V78G in SW 20-9-4-E

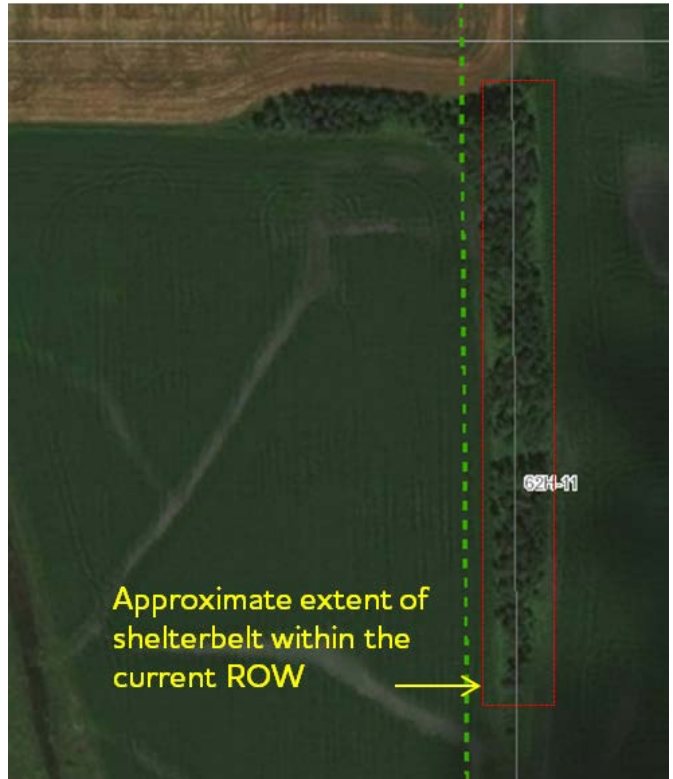


Figure 3: Proposed alteration to V78G in between NW and NE 17-9-4-E



Photo 1: Looking northeast from Oak Grove Road (SW 20-9-4-E)



Photo 2: Looking east from PTH 59 (NE 17-9-4-E)

Table 1: Summary of potential changes to valued components

Valued Component	Potential change in effects
Atmospheric Environment	No change
Groundwater Resources	No change
Aquatic resources	No change
Wildlife	Less wildlife habitat will be altered. Net positive effect.
Natural vegetation	No change
Traditional land and resource use	No change
Infrastructure and services	No change
Employment and economy	No change
Property and residential development	No change
Agricultural land use	Increased footprint on cropland. Two Shelterbelts will remain intact. Net neutral.
Non-agricultural land use	No change
Communities	Two shelterbelts will remain intact, net increase in overall aesthetics.
Heritage resources	No change

Summary

Each of the proposed adjustments was reviewed against the valued components used for the environmental assessment to determine if the proposed change would increase potential effects.

Overall, the proposed alterations; do not alter ROW width, do not increase effects to any valued components and, therefore, do not change the conclusions in the St. Vital

transmission project Environmental Assessment Report.

In closing, should you require more information or have any questions, please contact me at 204-360-4394.

Regards,

Original signed by

Shannon Johnson
Manager
Licensing and Environmental Assessment Department
Manitoba Hydro
360 Portage Ave (5)
Winnipeg, Manitoba
R3C 0G8

Attachments: Maps (2) & NOA Form