

Coordinate System: UTM Zone 14N NAD83  
 Data Source: MB Hydro, ProvMB, NRCAN  
 Date Created: November 21, 2012

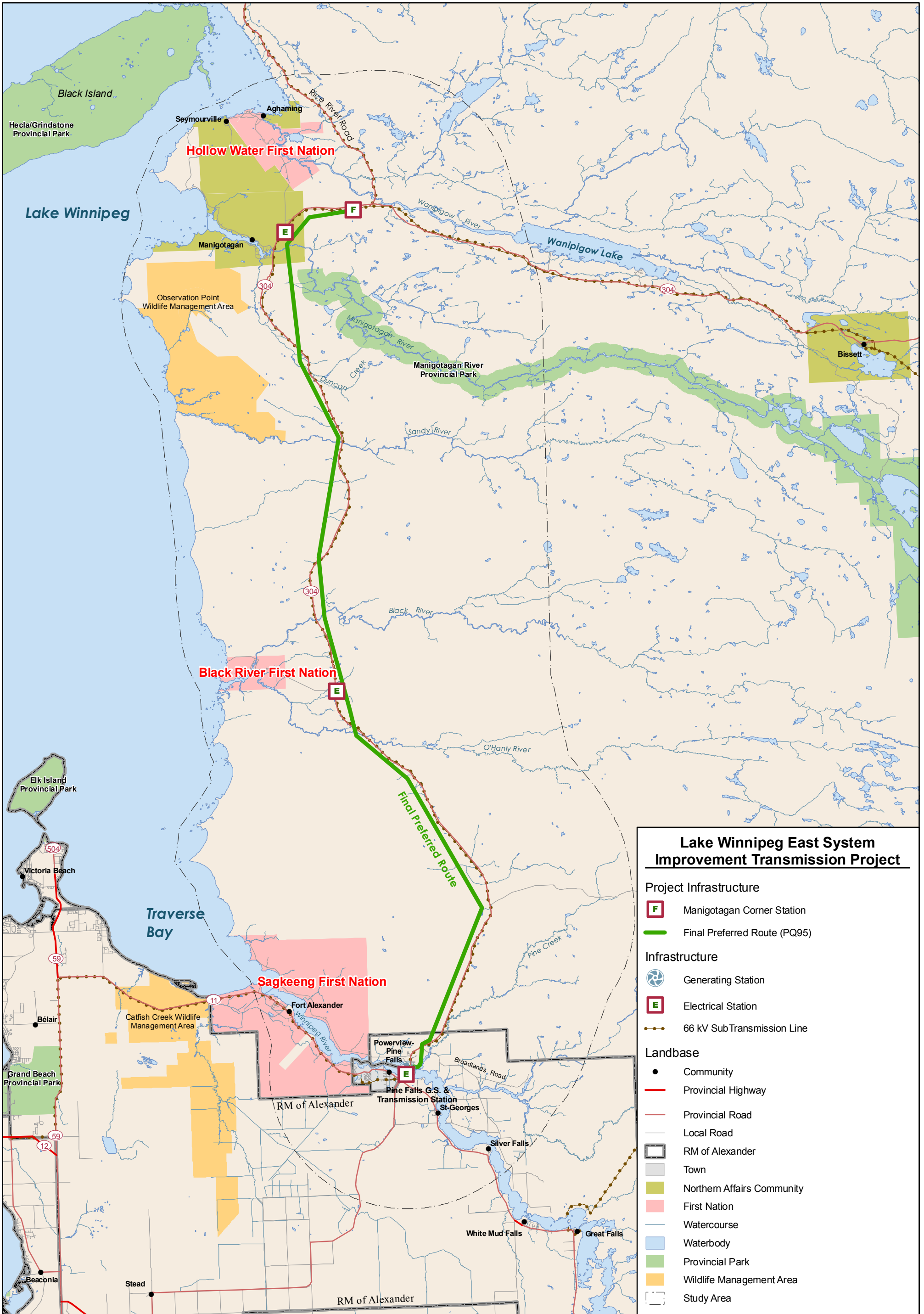
0 6 12 Kilometres  
 0 4 8 Miles

1:450,000

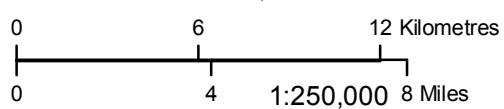


**General Location Map**





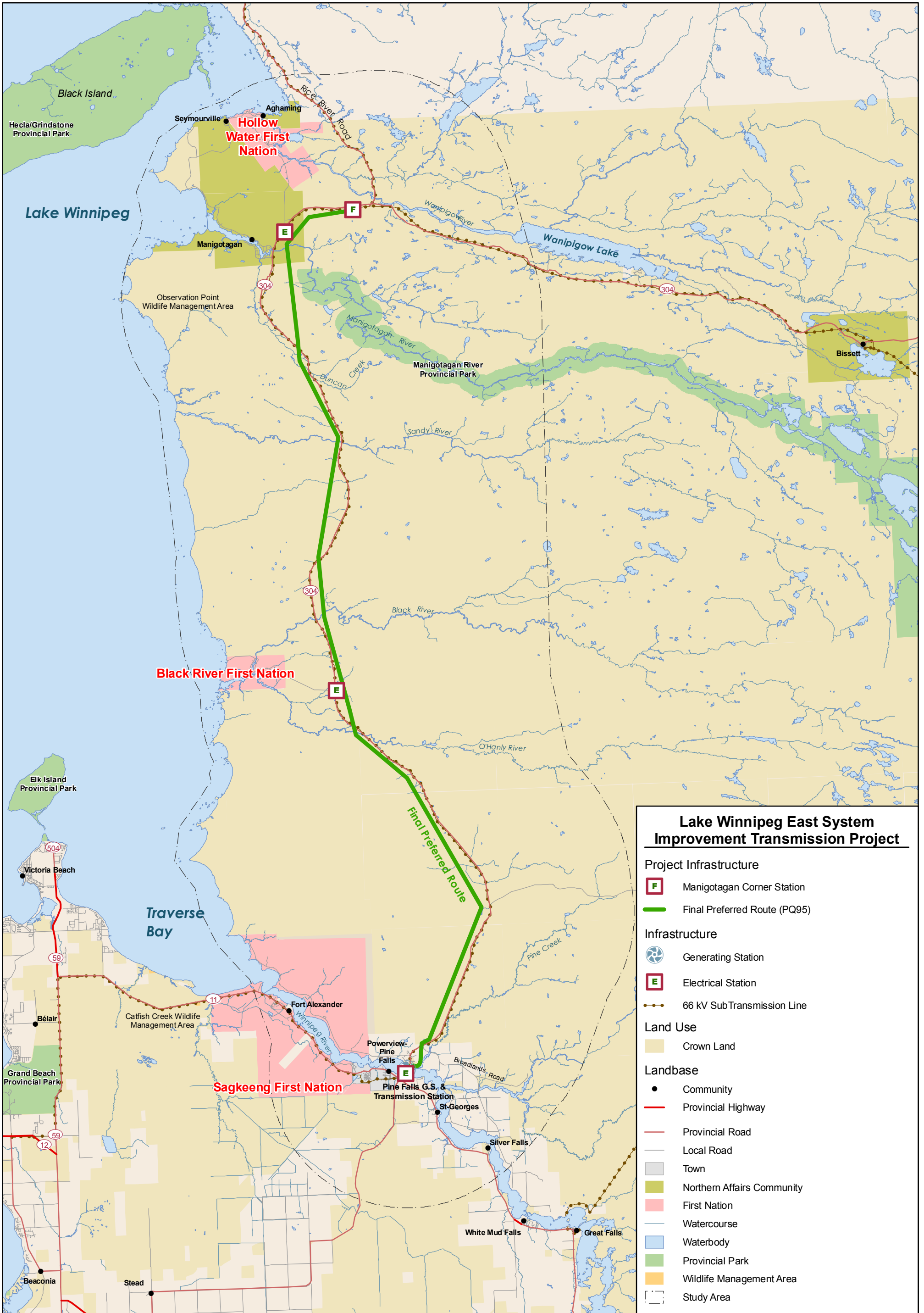
Coordinate System: UTM Zone 14N NAD83  
 Data Source: MB Hydro, ProvMB, NRCAN  
 Date Created: November 21, 2012



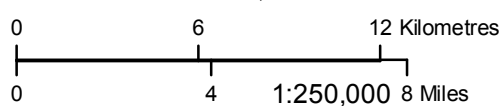
## Socio-Economic Study Area







Coordinate System: UTM Zone 14N NAD83  
 Data Source: MB Hydro, ProvMB, NRCAN  
 Date Created: December 11, 2012



## Land Use in the Study Area





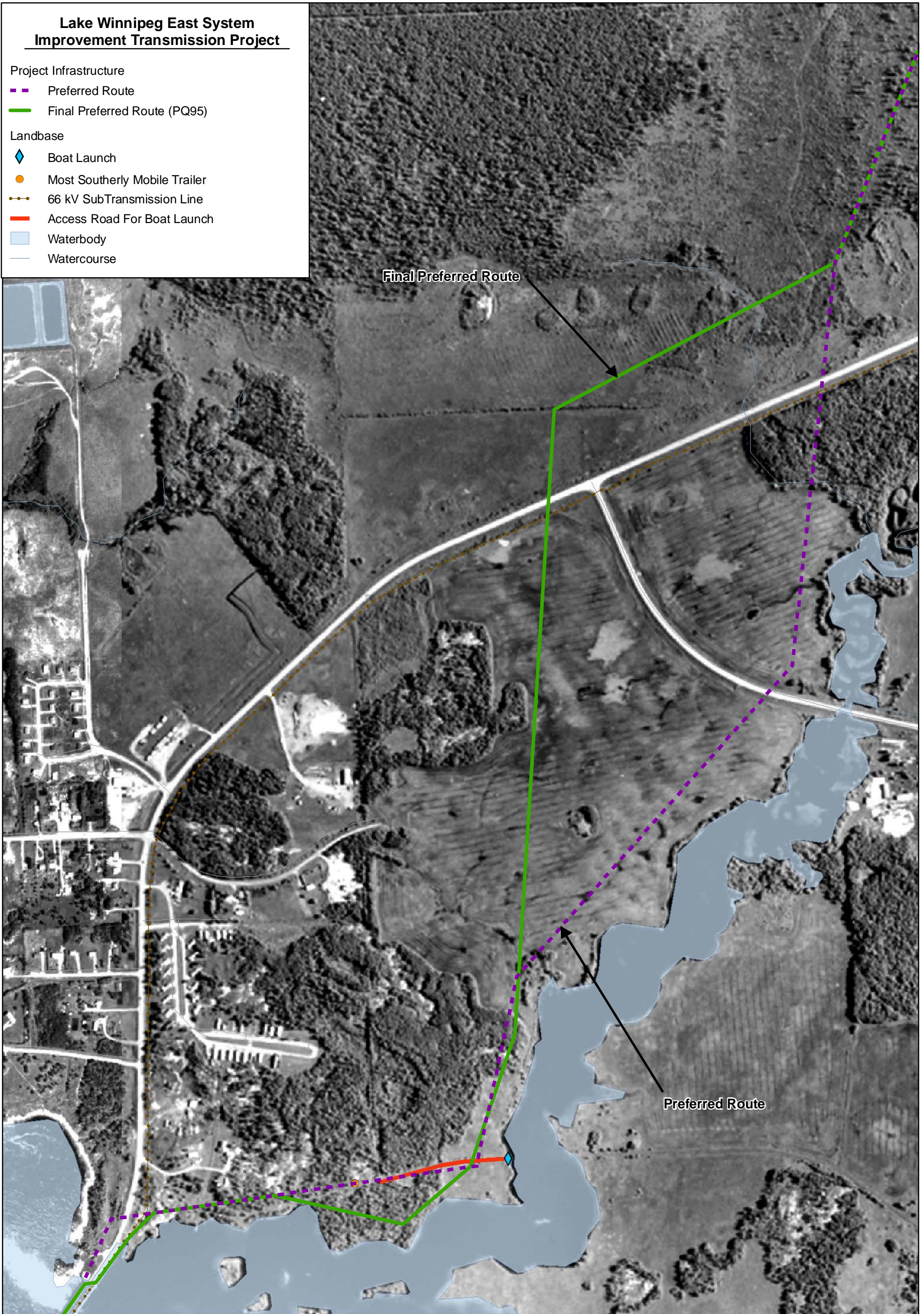
# Lake Winnipeg East System Improvement Transmission Project

## Project Infrastructure

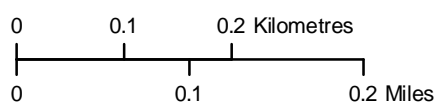
- Preferred Route
- Final Preferred Route (PQ95)

## Landbase

- ◆ Boat Launch
- Most Southerly Mobile Trailer
- 66 kV SubTransmission Line
- Access Road For Boat Launch
- Waterbody
- Watercourse



Coordinate System: UTM Zone 14N NAD83  
 Data Source: MB Hydro, ProvMB, NRCAN,  
 Date Created: December 13, 2012

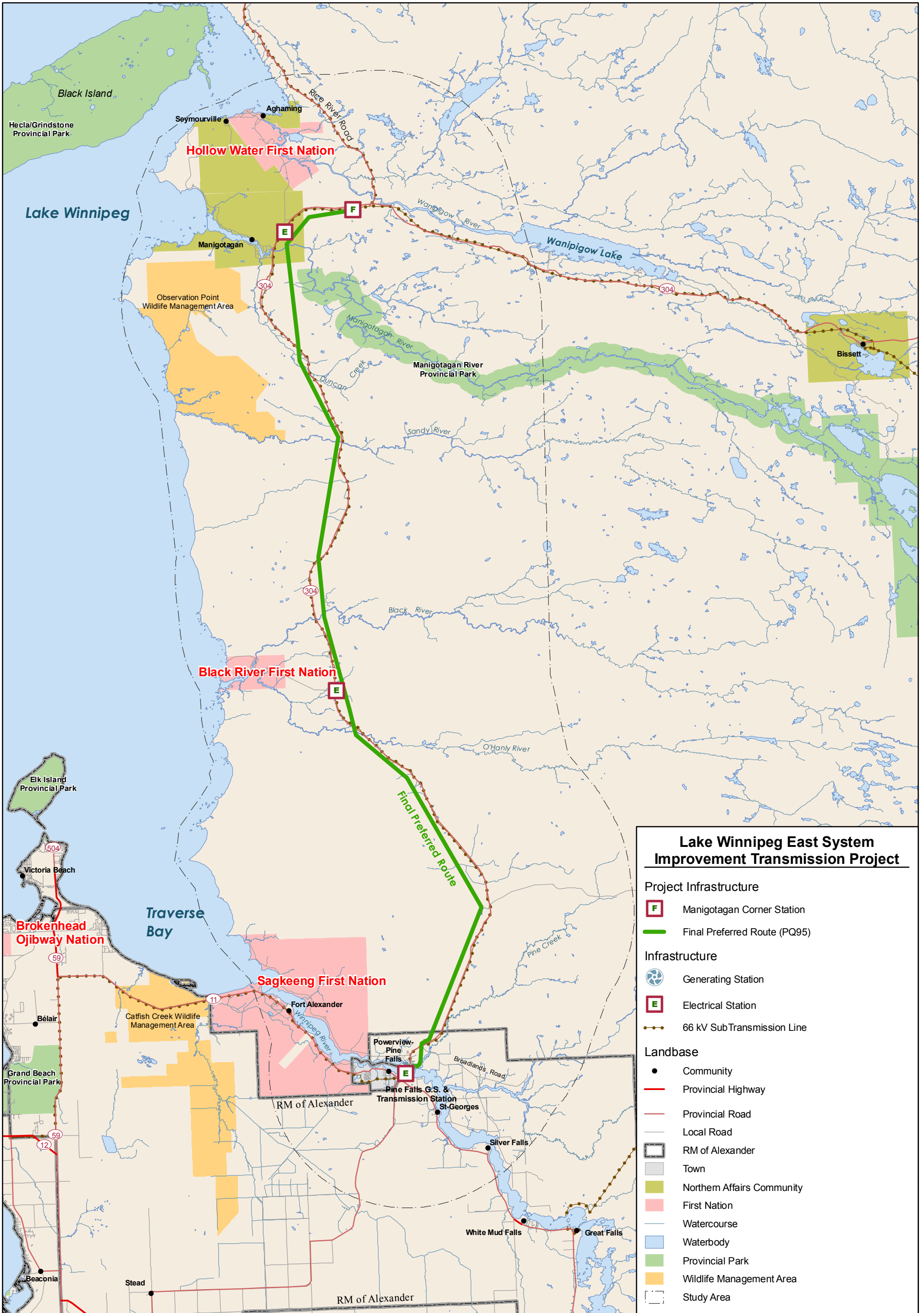


1:7,000

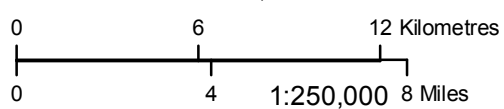
## Preferred and Final Preferred Routes Northeast of Powerview-Pine Falls







Coordinate System: UTM Zone 14N NAD83  
 Data Source: MB Hydro, ProvMB, NRCAN  
 Date Created: December 05, 2012



## First Nations in the Study Area



