

APPENDIX 11.4

PUBLIC ENGAGEMENT SUPPORTING VOLUME

Dorsey to Portage South Transmission Line Project
Public Engagement Supporting Volume
Appendix B

LIST OF CONTENTS

Preliminary List of Stakeholders for Engagement

Community Leadership and Key Landowners

Other Landowners, Agricultural Interests and Regulatory Authorities

Other Stakeholders

Newsletters

Newsletters: Round 1

Newsletters: Round 2

Newsletter Mail Drop Postal Codes

Maps

Overall Study Area Map

Alternatives Routes Map: Round 1

Preferred Route Map: Round 2

Preferred Route Map with Grids: Round 2

Preferred Route Map Grids 1 through 17

Notes

Meeting Notes: Round 1

Meeting Notes: Round 2

Invitation Letters

Invitation Letters for First Nations: Round 1

Invitation Letters for the Manitoba Metis Federation: Round 1

Invitation Letters for First Nations: Round 2

Invitation Letters for Peguis First Nation: Round 2

Letter to Landowners in Proximity to Route

Letter to Landowner

Newspaper Advertisements

Round 1: Central Plains Herald-Leader December 31, 2011

Round 1: Daily Graphic January 3, 2012

Round 2: Central Plains Herald-Leader April 12, 2012

Round 2: Daily Graphic April 16, 2012

Open Houses

Open House Storyboards 1 through 7: Round 1

Open House Storyboards 1 through 14: Round 2

Open House Comment forms

Open House Comment Form: Round 1

Open House Comment Form: Round 2

EACP Round 1 and 2 Summary of Events

Round 1 and 2 Public Engagement Events Table

APPENDIX B
PRELIMINARY LIST OF STAKEHOLDERS FOR ENGAGEMENT

COMMUNITY LEADERSHIP AND KEY LANDOWNERS:

- Key Landowners (Residents or businesses that hold property through which the proposed transmission line might be built).
- Rural Municipalities:
 - Portage la Prairie;
 - Cartier;
 - St. Francois Xavier; and
 - Rosser.
- First Nations and Metis Stakeholders:
 - Dakota Tipi First Nation;
 - Dakota Plains First Nation;
 - Long Plain First Nation;
 - Peguis First Nation; and
 - Manitoba Metis Federation.
- Agricultural Interests:
 - Manitoba Association of Agricultural Societies;
 - Farmers' Markets Association of Manitoba Co-op Inc.;
 - Manitoba Agricultural Services Corporation;
 - Manitoba Canola Growers Association;
 - Manitoba Organic Alliance; and
 - Sequoia Energy – Ian Witherspoon.

OTHER LANDOWNERS, AGRICULTURAL INTERESTS AND REGULATORY AUTHORITIES:

- Key Landowners and Agricultural Interests (those who own property within a mile of the proposed transmission line but not with ownership of land where the project could be built).
- Key Provincial Government Departments:

- Department of Fisheries and Oceans;
- Transport Canada - Navigable Waters;
- Environment Canada (CEAA);
- Aboriginal Affairs and Northern Development (Canada);
- Aboriginal and Northern Affairs (MB);
- Agriculture, Food and Rural Initiatives;
- Manitoba Infrastructure and Transportation;
- Manitoba Conservation;
- Manitoba Health;
- Manitoba Water Stewardship;
- La Salle Redboine Conservation District; and
- White Horse Plains Planning District.

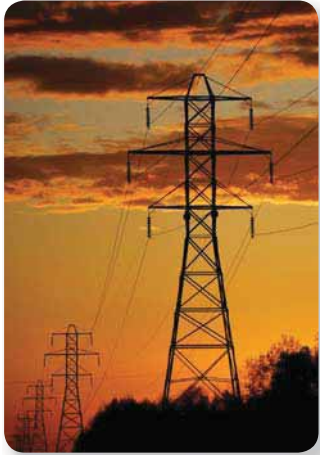
OTHER STAKEHOLDERS:

- Non-Governmental Organization's (NGO's):
 - Association of Manitoba Municipalities;
 - Bird Studies Canada;
 - Centre for Indigenous Environmental Resources;
 - Manitoba Eco-Network;
 - Manitoba Habitat Heritage Corporation;
 - Manitoba Rural Adaptation Council Inc.;
 - Manitoba Wildlands;
 - Nature Manitoba;
 - Western Canada Wilderness Committee – Manitoba;
 - University of Manitoba: Clayton H. Riddell Faculty of Earth, Environment, and Resources;
 - University of Manitoba: Natural Resources Institute;
 - University of Winnipeg: Environmental Studies;

- Southport, Manitoba; and
- Manitoba Aerial Applicators Association.

NEWSLETTERS

NEWSLETTERS: ROUND 1



You are invited

You are invited to share your views and provide local knowledge to help plan a transmission line with the least amount of effects on the environment and landowners. Round One Open Houses are scheduled to take place on January 11 and 12, 2012.

Locations

Oakville

Oakville Community Club
January 11, from 7 - 10 pm

St. Francois Xavier

St. Francois Xavier Community Club
January 12, from 7 - 10 pm

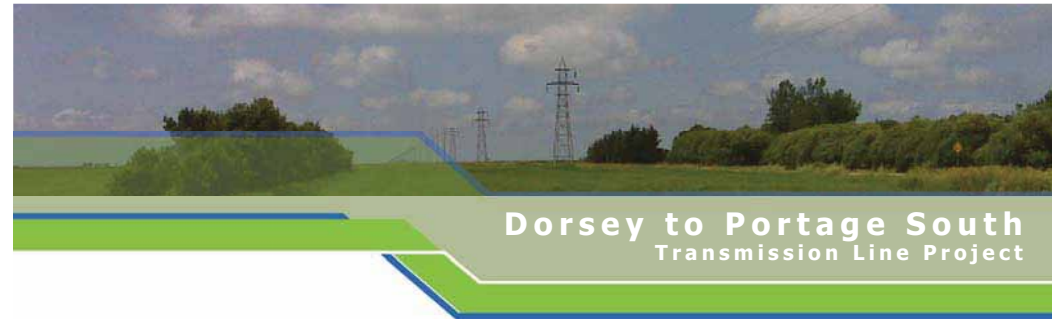
EVERYONE WELCOME

Questions

If you have any questions, please feel free to contact me by email at: jmatthewson@hydro.mb.ca

Or, call me collect at: **1-204-360-3119**

James Matthewson
 Senior Environmental Assessment Officer



Dorsey to Portage South
 Transmission Line Project

Overview

Manitoba Hydro has identified a need to enhance its transmission system in southwest Manitoba. The proposed Dorsey to Portage South Transmission Line Project is one component required to improve this system.

The transmission line would originate at the Dorsey Station, located northwest of Winnipeg near the village of Rosser, Manitoba. It would terminate at the Portage South Station located southeast of Portage la Prairie.



Snapshot

- The project would include a 230 kilovolt (kV) transmission line, and would be about 70 km long.
- The scheduled in-service date is November, 2014.
- The Project would pass through the Rural Municipalities of Portage la Prairie, Cartier, St. Francois Xavier and Rosser.

Site Selection and Environmental Assessment (SSEA) Process

The Dorsey to Portage South Transmission line will be considered a Class 2 development under Regulation 164/88 of the Environment Act (Manitoba) and therefore trigger environmental assessment and licensing requirements. The SSEA process will be documented in an Environmental Impact Statement (EIS) that will accompany Manitoba Hydro's application for environmental licensing. The process is scheduled to be completed in April 2012 and the project EIS will be submitted to government regulatory authorities in May 2012.



Dorsey to Portage South Transmission Line Project

SSEA Process continued...

Manitoba Hydro has initiated a Site Selection and Environmental Assessment (SSEA) process to identify a proposed route for this project. The purpose of this process is to select a route that has the least negative impact on people and the environment while maximizing positive opportunities to the region. It includes the identification of biophysical and socio-economic features within the study area that might be affected by the Project. Features that may be affected include land uses such as communities and villages, residences, airstrips and infrastructure, agriculture, heritage site/areas, social and local economic, aquatics, wildlife, forestry and vegetation. Alternative transmission line routes for the Project have been selected and evaluated based on avoidance of these sensitivities, while respecting technical (engineering) and cost considerations.

Community and Public Consultation

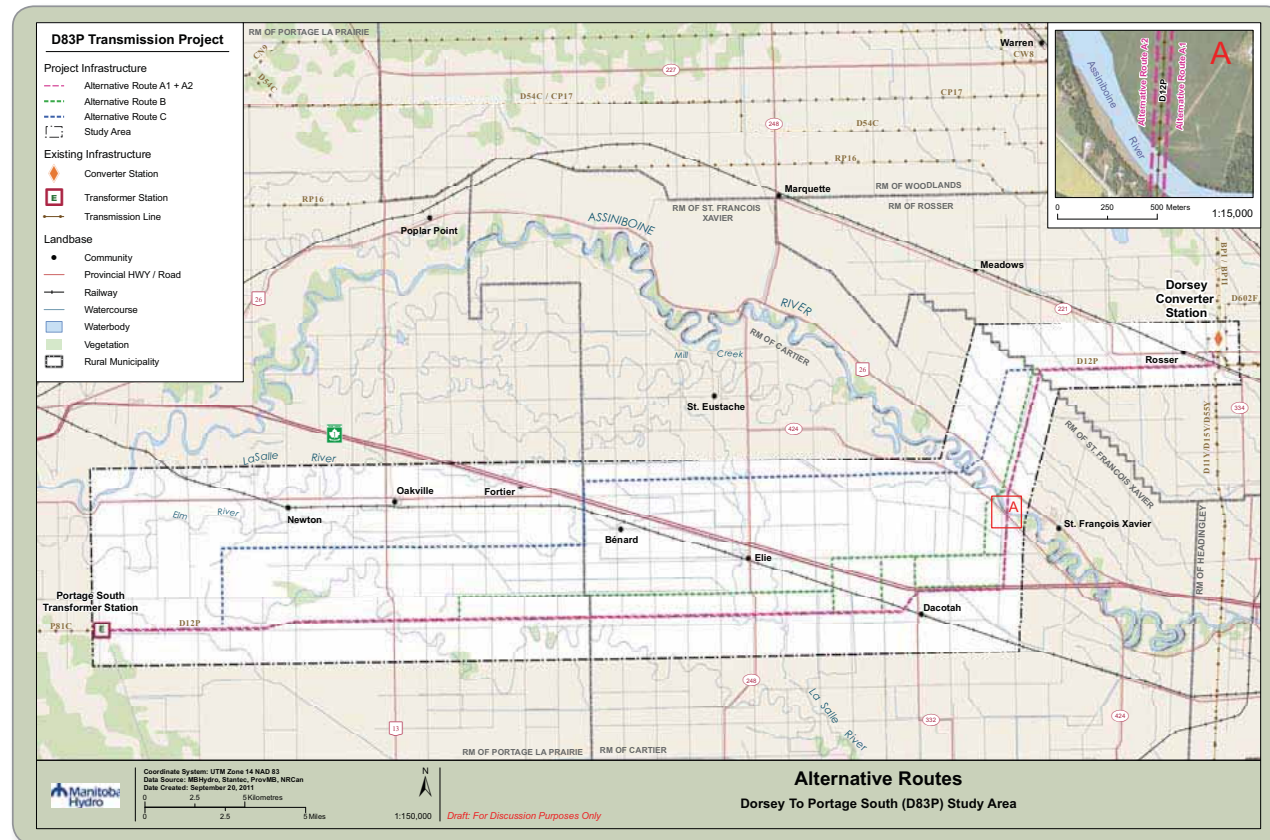
Consultation with communities, landowners and the public is a very important part of the planning process for identifying the best transmission line route for the Project. Input will be sought from private landowners, government and non-government agencies, community representatives, First Nations, Metis and the general public.

Information obtained will assist in identifying a preferred route and in assessing the potential impacts and mitigative measures that might be considered to offset any unavoidable impacts.

Two rounds of public consultation are planned at key stages of the SSEA process. Each round will include meetings with elected officials, key landowners, community leadership, organizations and other potentially affected stakeholders. In addition, open houses will be held to provide the general public with an opportunity to participate.

The intent of the first round would be to introduce the Project, including a description of the preliminary alternative routes.

Information obtained during these consultations will assist in the identification of a preferred route that is a balance of technical, biophysical, financial and socio-economic considerations.



Preliminary Alternative Routes

The map above identifies the study area and preliminary alternative routes that are presently being considered.

- Alternative Route A typically follows the existing D12P transmission line, either to the north side of the existing line or to the south depending on the segment. Vacant right-of-way land would be available through much of this route, reducing the need for new clearing. The north side route option offers maximum use of vacant right-of-way width. Tower locations would be matched to the extent possible if the D12P transmission line is followed.
- Alternative Route B is comparable to Alternative Route A but provides for secondary route options. Where possible, this route reconnects with Route A where it follows the existing transmission line. Alternative Route B alignments are essentially located within one mile of the Alternative A route options.
- Alternative Route C offers an independent route alignment, with the exception of its starting and end-points to the stations. As in the case of Routes A and B, portions of existing transmission line rights-of-way would be used where feasible.



NEWSLETTERS: ROUND 2

You are Invited to Attend

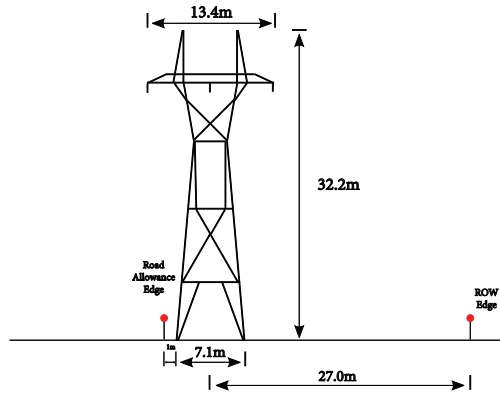
Manitoba Hydro invites you to participate in a public Open House for the Dorsey to Portage South Transmission Project. The Open House will provide an opportunity for residents in the area to discuss their comments and concerns with the preferred route with a Manitoba Hydro representative.

Manitoba Hydro Goals:

- Review and comment on the preferred route.
- Identify concerns and potential effects of Project.
- Discuss mitigation measures to minimize or avoid potential Project effects on people or the environment.

Manitoba Hydro Commitments:

- Keep the public informed of Manitoba Hydro activities in the region.
- Be open and transparent throughout the approval process.
- Ensure local resident concerns are identified and considered throughout the process.



Self-Supporting Steel Suspension Tower

Open House Locations and Times

You are invited to share your views about this project. Round 2 Preferred Route Open Houses are scheduled to take place on April 25th and 26th, 2012.

April 25th - Oakville Community Hall

Oakville, Manitoba
55 PR 331
Drop-In from 6:00 - 9:00 pm

April 26th - St. Francois Xavier Community Club

St. Francois Xavier, Manitoba
983 PTH 26
Drop-In from 6:30 - 9:00 pm

REFRESHMENTS PROVIDED

We Want to Hear from You

There are a number of ways you can participate and provide your input:

- Community Open Houses;
- Comment sheets available any Open Houses; or,
- Contact us directly.

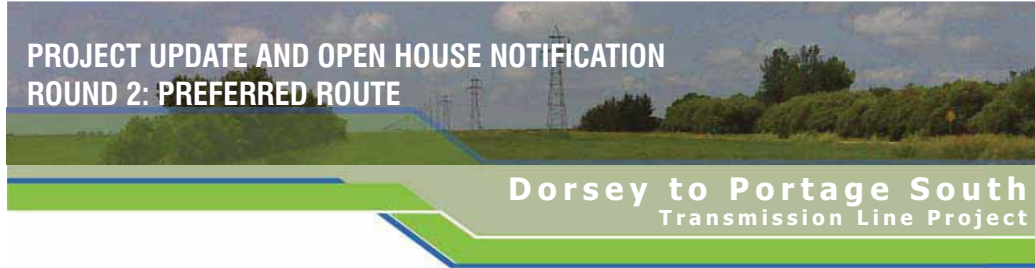


Contact Information

David Block
Project Manager
Licensing and Environmental Assessment Department
Manitoba Hydro
P.O. Box 7950, Station Main, Winnipeg, MB R3C 0J1

Phone (collect): **1 (204) 360-7353**
E-mail: **dblock@hydro.mb.ca**

**PROJECT UPDATE AND OPEN HOUSE NOTIFICATION
ROUND 2: PREFERRED ROUTE**



Project Description

Manitoba Hydro has identified a need to enhance its transmission system in southwest Manitoba. The proposed Dorsey to Portage South Transmission Line Project is one component required to improve this transmission system.

The transmission line would originate at the Dorsey Station, located northwest of Winnipeg near the village of Rosser, Manitoba. It would terminate at the Portage South Station located southeast of Portage la Prairie.

Following a review of a variety of criteria which included public feedback a preferred route has been determined for the Project.

Project Facts

- The Project includes construction of a 230 kilovolt (kV) AC transmission line.
- The transmission line would be built north of an existing transmission line (D12P) and will be 64km long.
- Most towers will be 32.2m (106 ft) in height and the average span between structures will be 400m (1,312 ft).
- Passes through the Rural Municipalities of Portage la Prairie, Cartier, St. Francois Xavier and Rosser.
- Scheduled in-service date is April 2015.

Site Selection and Environmental Assessment Process

The Dorsey to Portage South Transmission line will require a Class 2 development license under The Environment Act (Manitoba) and therefore trigger environmental assessment (EA) and licensing requirements. The Site Selection and Environmental Assessment Process (SSEA) process will be documented in an Environmental Impact Statement (EIS) that will accompany Manitoba Hydro's application for environmental licensing. The Project EIS will be submitted to government regulatory authorities in June 2012.

The SSEA process was initiated to identify alternative routes which would have the least negative impact on people and the environment while maximizing positive opportunities to the region. The selection process included the identification of biophysical and socio-economic features within the study area that might be affected by the Project as well as consultation with landowners and other people living in the area.

Following the SSEA process a preferred route has been

determined for the project. The SSEA process will allow for additional feedback to be provided and to develop proper mitigation strategies to ensure minimal impact on people and their environment.



ROUND 2: PREFERRED ROUTE

PROJECT UPDATE AND OPEN HOUSE NOTIFICATION

**Dorsey to Portage South
Transmission Line Project**

Route Determination

The accompanying map identifies the project study area and the preferred route selected. The route located north along the existing transmission line D12P, was deemed preferred by our Project team. The route will begin at Dorsey station outside of Rosser and travel west through four municipalities to the terminus southeast of Portage la Prairie. The line will follow an existing transmission line and it is currently anticipated that the towers will remain within the existing right-of-way which is owned by Manitoba Hydro.

Route Selection Criteria

✓ Public comments	✓ Socio-economic concerns
✓ Technical	✓ Distance from residences
✓ Vegetation	✓ Wildlife
✓ Existing infrastructure	✓ Aquatics
✓ Agriculture	✓ Heritage resources
✓ Land use	

What We Heard During Round One

The goal for Round 1 of the environmental assessment consultation process was to obtain feedback on the alternative routes. Public Open Houses were held during January 2012 in Oakville and St. Francois Xavier. These open houses were advertised in newspapers and direct postal mailings to invite members of the public to provide feedback on the alternative routes being presented.

Residents who participated during Round 1 provided feedback on different routing options for the transmission line and 65% of respondents who submitted a comment sheet noted a preference for Alternative Route A. Some of the reasons included:

- Less disturbance required because there is already a transmission line there.
- Manitoba Hydro would have to purchase less land because they already own the land along D12P.
- Aerial crop sprayers would not have to contend with new transmission lines.
- Effects associated with the existing transmission line will already have been understood and addressed.

Please refer to the accompanying map showing the preferred route.



Concerns Raised at Open Houses

Property Values

Several landowners expressed concern about the possibility of property values declining due to the existence of another transmission line in the area (D12P). Attendees were informed that Manitoba Hydro monitors property values near their infrastructure projects. According to past monitoring, a decline in property values is not expected as a result of the construction of this transmission line.

Impacts on Farming

Several landowners were concerned about potential negative effects on their agricultural operations. Manitoba Hydro recognizes that the placement of their infrastructure projects can create challenges for farmers, including those related to spraying and seeding in addition to the removal of land from agricultural uses. Manitoba Hydro will discuss these issues with potentially affected landowners and will offer a compensation package to address the additional work and resources required.

Farming will still be feasible underneath the transmission line.

Compensation

Several landowners were interested in learning more about how they would be compensated for placement of the transmission line. Manitoba Hydro will seek to acquire easement agreements with all affected landowners. The right-of-way will be expanded as required from the existing D12P right-of-way as under an easement agreement and affected landowners will be compensated accordingly. Towers will be placed on property currently owned by Manitoba Hydro.

Health Risks and Electric and Magnetic Fields (EMF)

Several landowners raised concerns about the potential effects of EMF on health. Scientific studies and associated literature have shown no direct link between human health and exposure to EMF. Please refer to the Manitoba Hydro website for further information (<http://www.hydro.mb.ca>).

Next Steps

Manitoba Hydro will be holding Round 2 Open Houses to discuss any concerns held by local residents, to discuss mitigation measures and to identify any potential adjustments to the route to ensure minimal impact on people and their environment. Dates and locations of the public Open Houses are noted below.

The information gathered and received by the Project team will support the environmental assessment which will be submitted

at the end of June 2012 for review and approval by regulatory authorities. Once the assessment is submitted will be available for public review and comment.

Following receipt of a licence, it is anticipated that construction will begin during Fall 2014 with an expected in-service date in April 2015.

Project Timeline

**Round 1
Introduction to the Project**

- Describe the proposed Project and SSEA process.
- Present alternative route options and identify issues and concerns.
- Document what was heard.

**Round 2
Presentation of Preferred Route**

- Present the preferred route.
- Identify issues and concerns and discuss possible mitigation measures.
- Document what was heard.

Next Steps

- Receipt of license October 2012.
- Construction October 2014 to March 2015.
- In-service date April 2015.

WE ARE HERE



NEWSLETTER MAIL DROP POSTAL CODES

Table 2. Dorsey to Portage South Newsletter Mail Drop Postal Codes

RM	Town	Postal Code	Number per code	Total per RM (map)
Portage la Prairie	Southport	R0H 1N0	201	612
	Newton Siding	R0H 0X0	56	
	Oakville	R0H 0Y0	355	
Rosser	Rosser	R0H 1E0 Boxes 1-145	151	151
St. Francois		R4L 1A3	377	377
		R4L 1A5		
		R4L 1A6		
		R4L 1B6		
		R4L 1C5		
Cartier		R4K	277	855
	Elie & Marquette	R0H 0H0 R0H 0V0	404	
	St. Eustache	R0H 1H0	174	
TOTALS				1995