

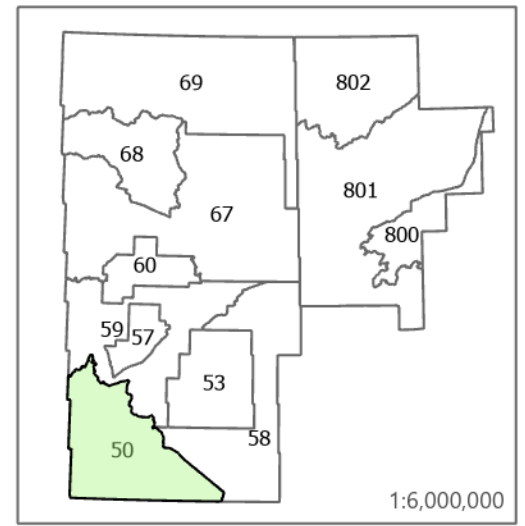
Appendix M – Spatial Harvest Schedule

The following maps detail the potential harvest areas proposed in the Preferred Forest Management Scenario (PFMS) spatial harvest schedule (SHS) output to achieve the strategic-level objectives and goals of the forest management plan. Selected Potential Harvest Areas for years 1 to 20 represent the spatial harvest schedule for the duration of the forest management plan, while years 20 to 40 represent contingency harvest areas. For more information, see sections 13.3 Spatial Harvest Schedule and 16.3.3 Proposed Operating Areas and Projected Harvest Schedule.

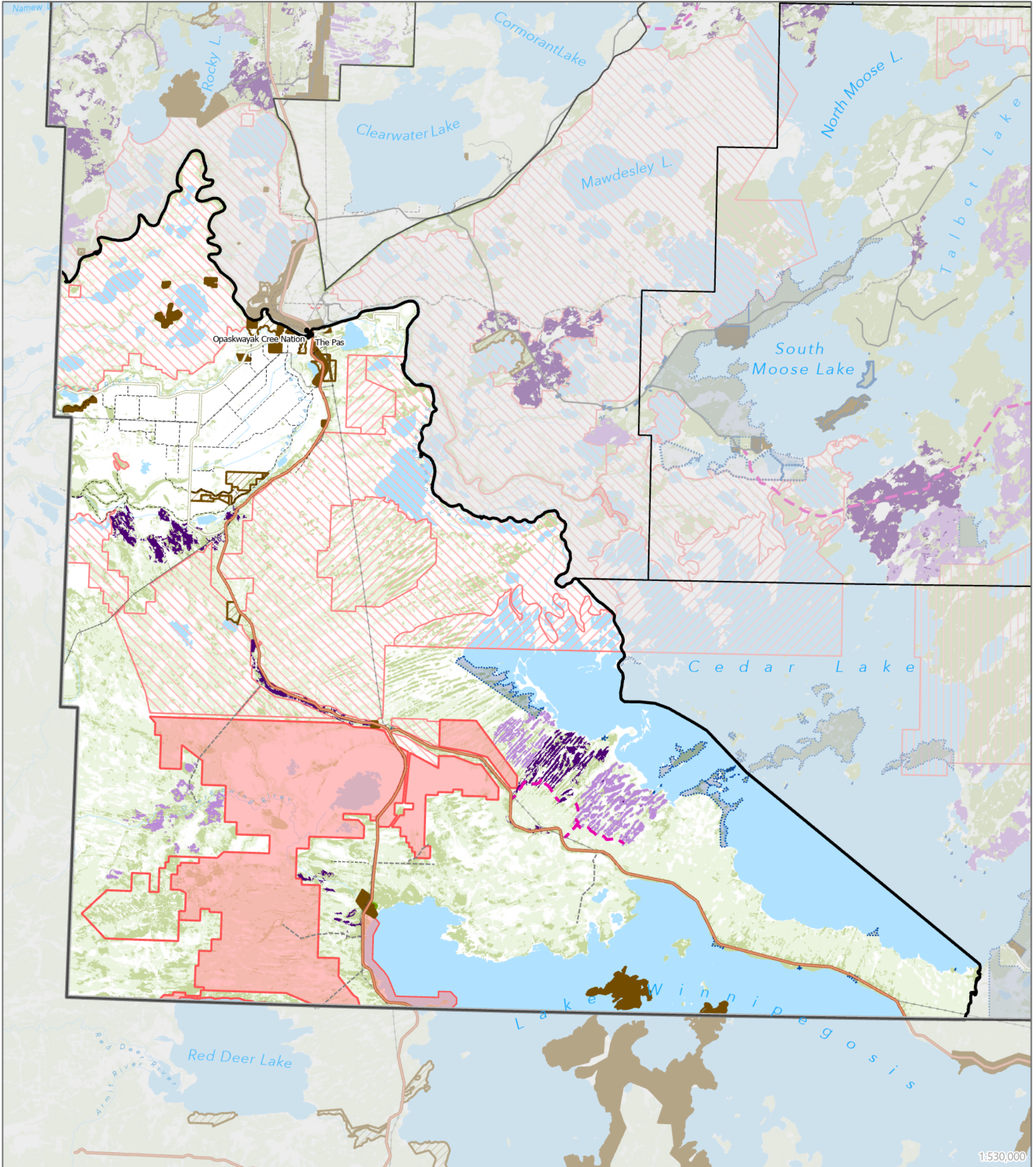


Forest Management License Area No. 2 (FML2)

Areas Selected for Potential Harvest Operations
 20-Year Forest Management Plan
 January 2027 to December 2046
 and projected January 2047 to December 2066
Refined Habitat Scenario



FMU 50



Reference

- Towns
- Cities
- ◻ FML No. 2
- ◻ FMU Boundary
- ◻ Productive Forest Stands
- ~ Rivers and Streams
- ◻ Waterbodies

Indigenous Lands

- ◻ Indigenous Reserve Lands
- ◻ TLE
- ◻ NFA & GRFS
- ◻ Community Use & Development Areas

Provincial Designations

- ◻ Protected Areas
- ◻ Red Deer WMA - timber harvest prohibited
- ◻ Provincial Park

Areas of Special Interest

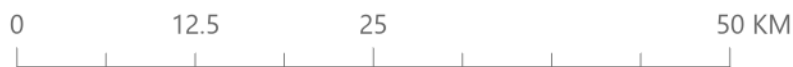
- ◻ Proposed Protected Area
- ◻ Proposed Designated Area
- ◻ Area of Special Interest

Selected Potential Harvest Areas

- ◻ Year 1 to 20
- ◻ Year 21 to 40
- ◻ Potential Access
- ◻ CKP Planned Roads

Roads & Utilities

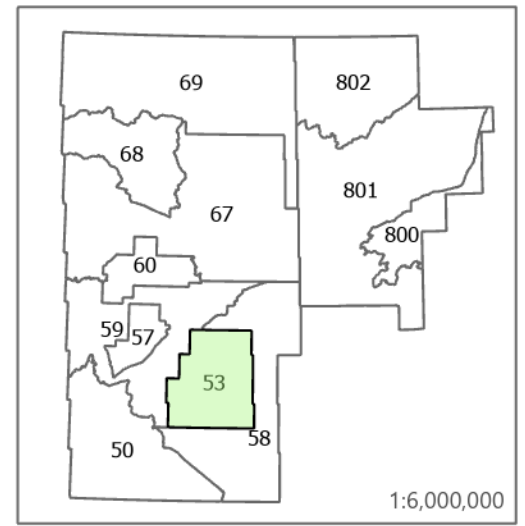
- ◻ Provincial Highway
- ◻ Provincial Road
- ◻ All-Weather
- ◻ Other
- ◻ Rail
- ◻ Transmission lines



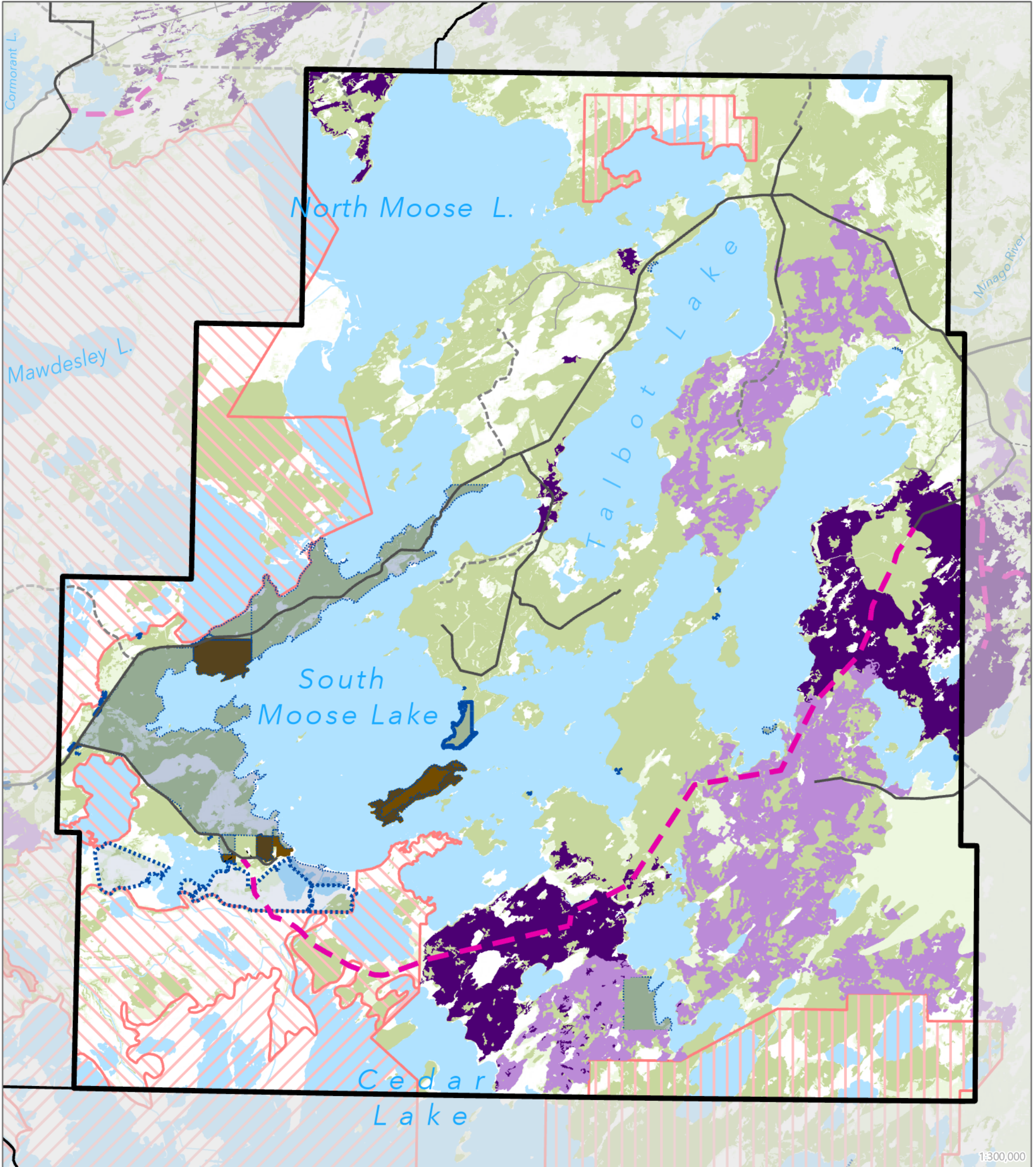


Forest Management License Area No. 2 (FML2)

Areas Selected for Potential Harvest Operations
 20-Year Forest Management Plan
 January 2027 to December 2046
 and projected January 2047 to December 2066
Refined Habitat Scenario



FMU 53



Reference

- Towns
- Cities
- ◻ FML No. 2
- ◻ FMU Boundary
- ◻ Productive Forest Stands
- ◻ Rivers and Streams
- ◻ Waterbodies

Indigenous Lands

- ◻ Indigenous Reserve Lands
- ◻ TLE
- ◻ NFA & GRFS
- ◻ Community Use & Development Areas

Provincial Designations

- ◻ Protected Areas
- ◻ Red Deer WMA - timber harvest prohibited
- ◻ Provincial Park

Areas of Special Interest

- ◻ Proposed Protected Area
- ◻ Proposed Designated Area
- ◻ Area of Special Interest

Selected Potential Harvest Areas

- ◻ Year 1 to 20
- ◻ Year 21 to 40
- ◻ Potential Access
- ◻ CKP Planned Roads

Roads & Utilities

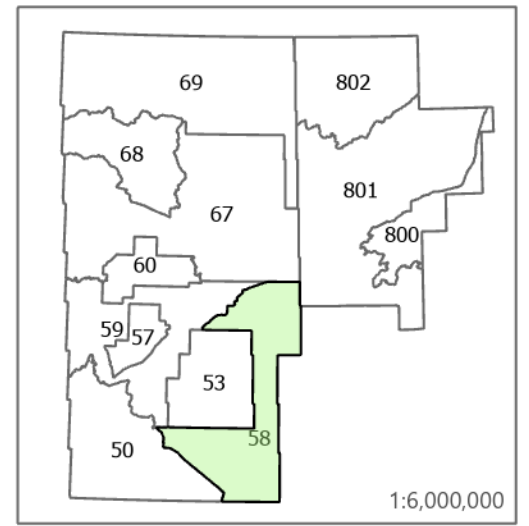
- ◻ Provincial Highway
- ◻ Provincial Road
- ◻ All-Weather
- ◻ Other
- ◻ Rail
- ◻ Transmission lines



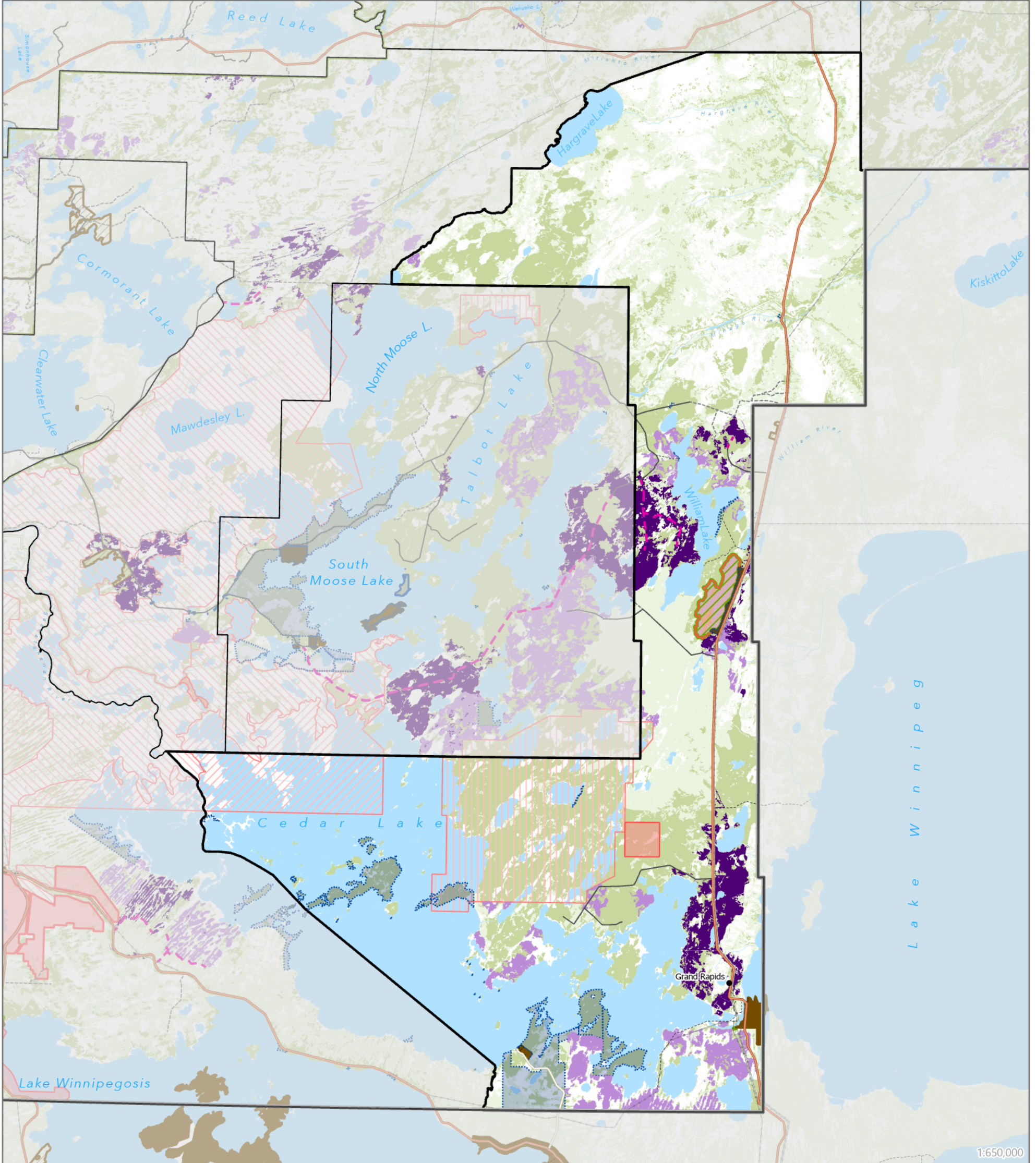


Forest Management License Area No. 2 (FML2)

Areas Selected for Potential Harvest Operations
 20-Year Forest Management Plan
 January 2027 to December 2046
 and projected January 2047 to December 2066
Refined Habitat Scenario



FMU 58



1:650,000

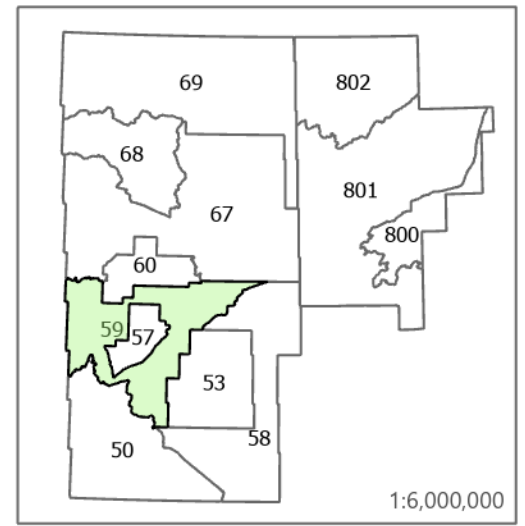
Reference <ul style="list-style-type: none"> • Towns • Cities ◻ FML No. 2 ◻ FMU Boundary ◻ Productive Forest Stands ~ Rivers and Streams ~ Waterbodies 	Indigenous Lands <ul style="list-style-type: none"> ◻ Indigenous Reserve Lands ◻ TLE ◻ NFA & GRFS ◻ Community Use & Development Areas 	Provincial Designations <ul style="list-style-type: none"> ◻ Protected Areas ◻ Red Deer WMA - timber harvest prohibited ◻ Provincial Park 	Areas of Special Interest <ul style="list-style-type: none"> ◻ Proposed Protected Area ◻ Proposed Designated Area ◻ Area of Special Interest 	Selected Potential Harvest Areas <ul style="list-style-type: none"> ◻ Year 1 to 20 ◻ Year 21 to 40 ◻ Potential Access ◻ CKP Planned Roads 	Roads & Utilities <ul style="list-style-type: none"> — Provincial Highway — Provincial Road — All-Weather — Other — Rail — Transmission lines
---	---	--	---	---	---

0 15 30 60 KM

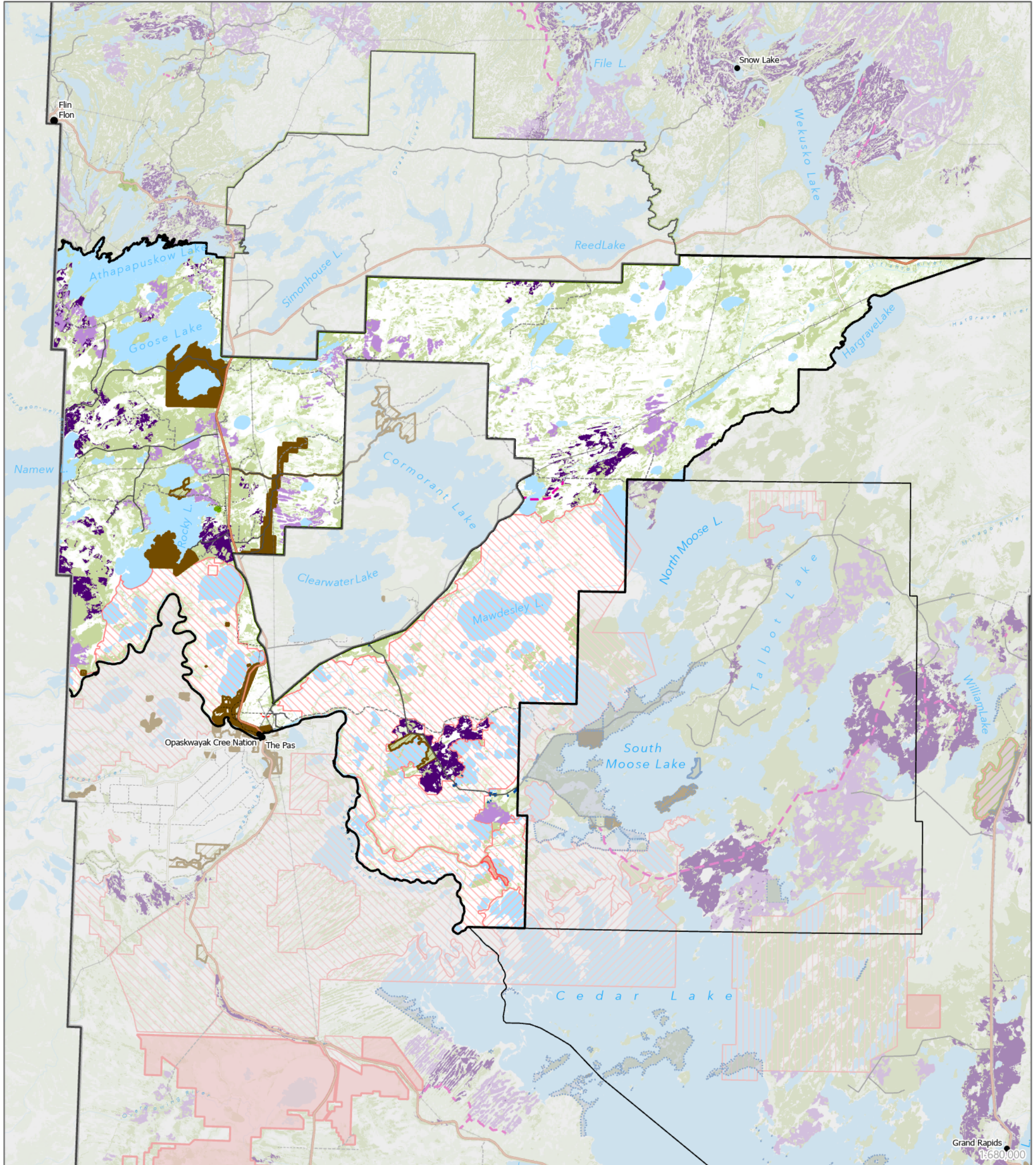


Forest Management License Area No. 2 (FML2)

Areas Selected for Potential Harvest Operations
 20-Year Forest Management Plan
 January 2027 to December 2046
 and projected January 2047 to December 2066
Refined Habitat Scenario



FMU 59



Reference

- Towns
- Cities
- ◻ FML No. 2
- ◻ FMU Boundary
- ◻ Productive Forest Stands
- ~ Rivers and Streams
- ◻ Waterbodies

Indigenous Lands

- ◻ Indigenous Reserve Lands
- ◻ TLE
- ◻ NFA & GRFS
- ◻ Community Use & Development Areas

Provincial Designations

- ◻ Protected Areas
- ◻ Red Deer WMA - timber harvest prohibited
- ◻ Provincial Park

Areas of Special Interest

- ◻ Proposed Protected Area
- ◻ Proposed Designated Area
- ◻ Area of Special Interest

Selected Potential Harvest Areas

- ◻ Year 1 to 20
- ◻ Year 21 to 40
- ◻ Potential Access
- ◻ CKP Planned Roads

Roads & Utilities

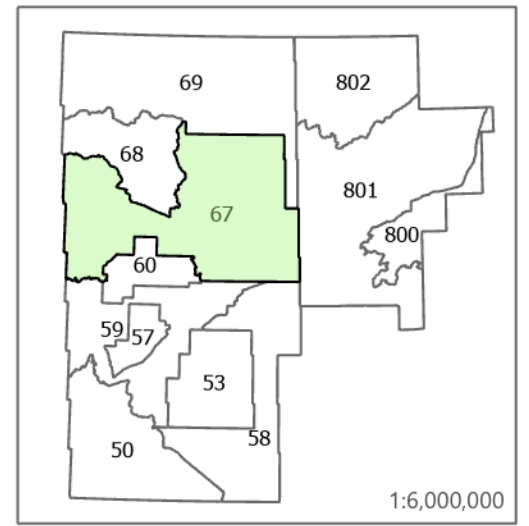
- ◻ Provincial Highway
- ◻ Provincial Road
- ◻ All-Weather
- ◻ Other
- ◻ Rail
- ◻ Transmission lines



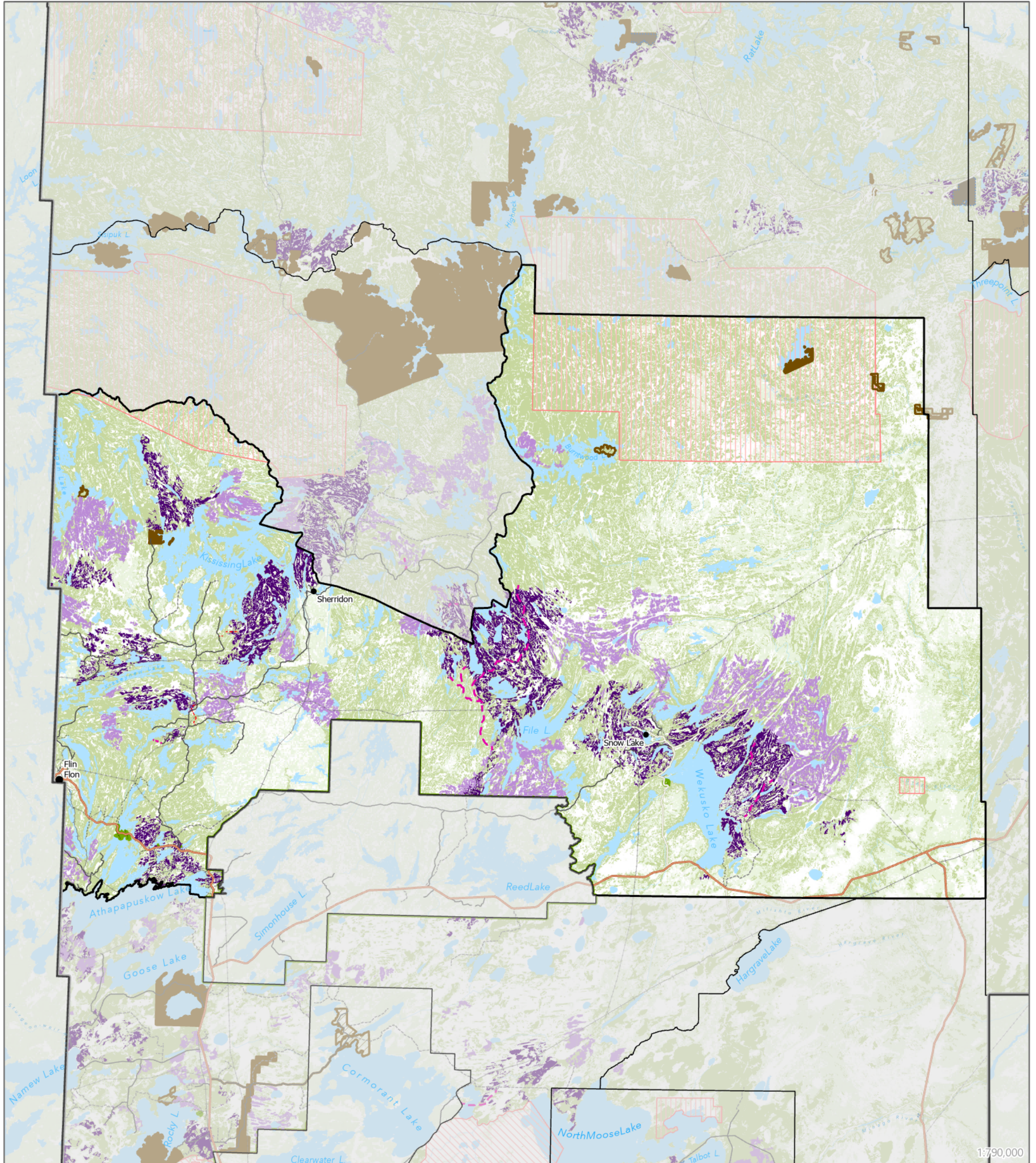


Forest Management License Area No. 2 (FML2)

Areas Selected for Potential Harvest Operations
 20-Year Forest Management Plan
 January 2027 to December 2046
 and projected January 2047 to December 2066
Refined Habitat Scenario



FMU 67



Reference

- Towns
- Cities
- ◻ FML No. 2
- ◻ FMU Boundary
- ◻ Productive Forest Stands
- ~ Rivers and Streams
- ~ Waterbodies

Indigenous Lands

- ◻ Indigenous Reserve Lands
- ◻ TLE
- ◻ NFA & GRFS
- ◻ Community Use & Development Areas

Provincial Designations

- ◻ Protected Areas
- ◻ Red Deer WMA - timber harvest prohibited
- ◻ Provincial Park

Areas of Special Interest

- ◻ Proposed Protected Area
- ◻ Proposed Designated Area
- ◻ Area of Special Interest

Selected Potential Harvest Areas

- ◻ Year 1 to 20
- ◻ Year 21 to 40
- ◻ Potential Access
- ◻ CKP Planned Roads

Roads & Utilities

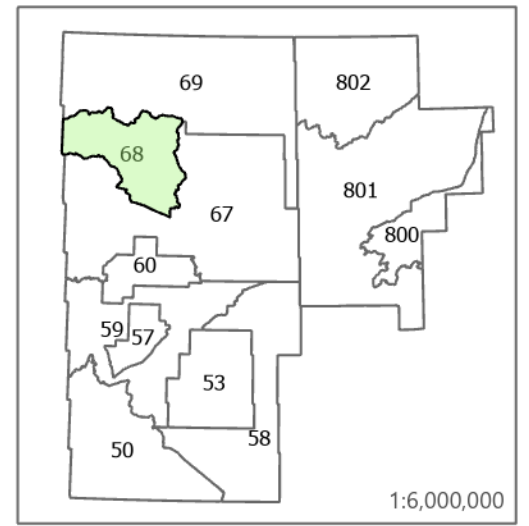
- ◻ Provincial Highway
- ◻ Provincial Road
- ◻ All-Weather
- ◻ Other
- ◻ Rail
- ◻ Transmission lines



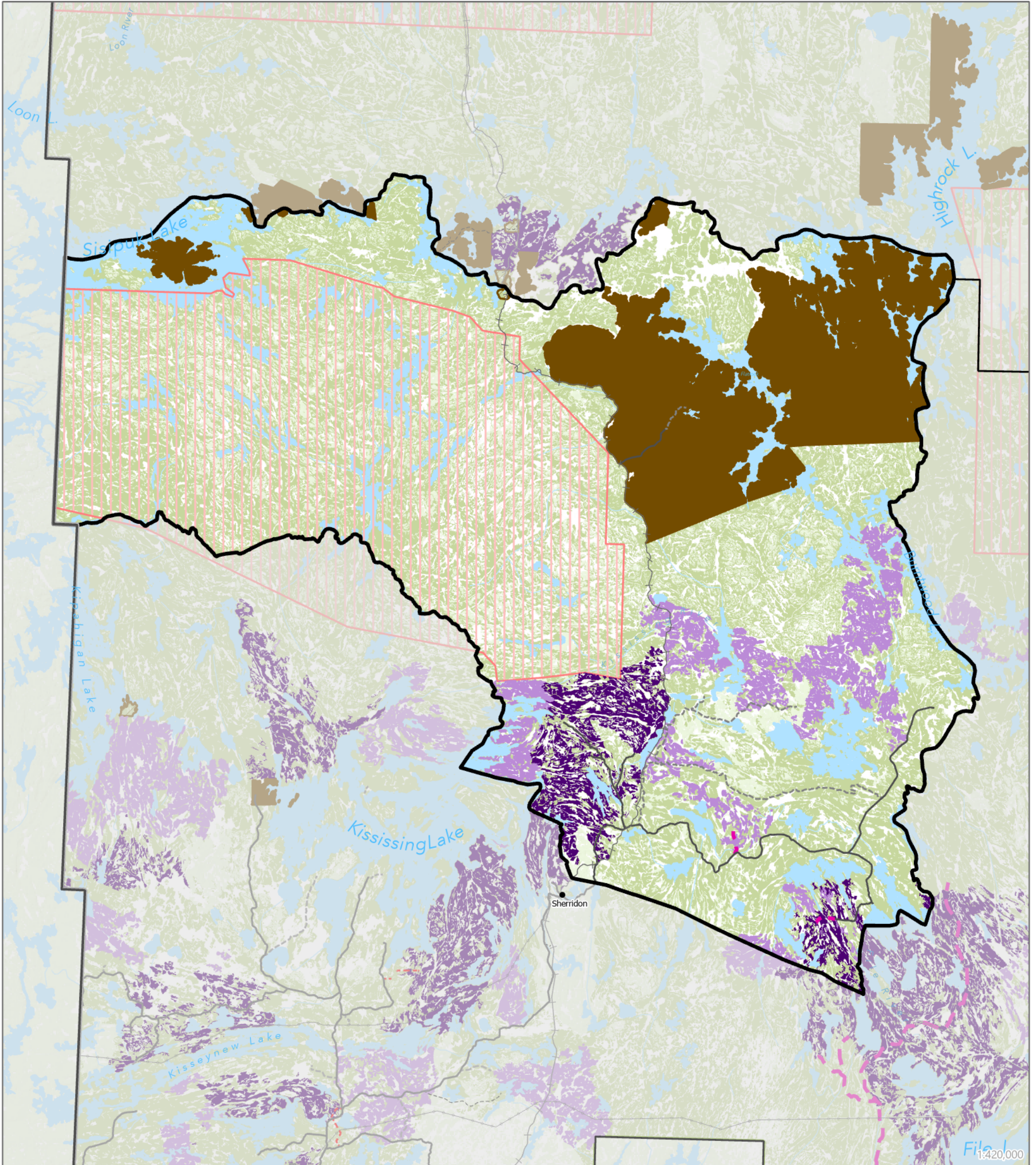


Forest Management License Area No. 2 (FML2)

Areas Selected for Potential Harvest Operations
 20-Year Forest Management Plan
 January 2027 to December 2046
 and projected January 2047 to December 2066
Refined Habitat Scenario



FMU 68



Reference

- Towns
- Cities
- ◻ FML No. 2
- ◻ FMU Boundary
- ◻ Productive Forest Stands
- ~ Rivers and Streams
- ~ Waterbodies

Indigenous Lands

- ◻ Indigenous Reserve Lands
- ◻ TLE
- ◻ NFA & GRFS
- ◻ Community Use & Development Areas

Provincial Designations

- ◻ Protected Areas
- ◻ Red Deer WMA - timber harvest prohibited
- ◻ Provincial Park

Areas of Special Interest

- ◻ Proposed Protected Area
- ◻ Proposed Designated Area
- ◻ Area of Special Interest

Selected Potential Harvest Areas

- ◻ Year 1 to 20
- ◻ Year 21 to 40
- ◻ Potential Access
- ◻ CKP Planned Roads

Roads & Utilities

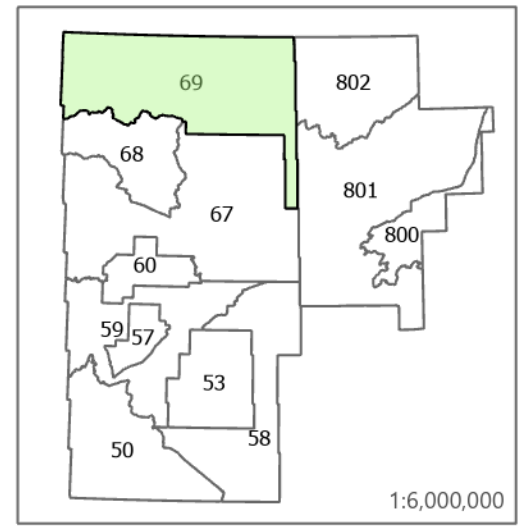
- ◻ Provincial Highway
- ◻ Provincial Road
- ◻ All-Weather
- ◻ Other
- ◻ Rail
- ◻ Transmission lines

0 10 20 40 KM

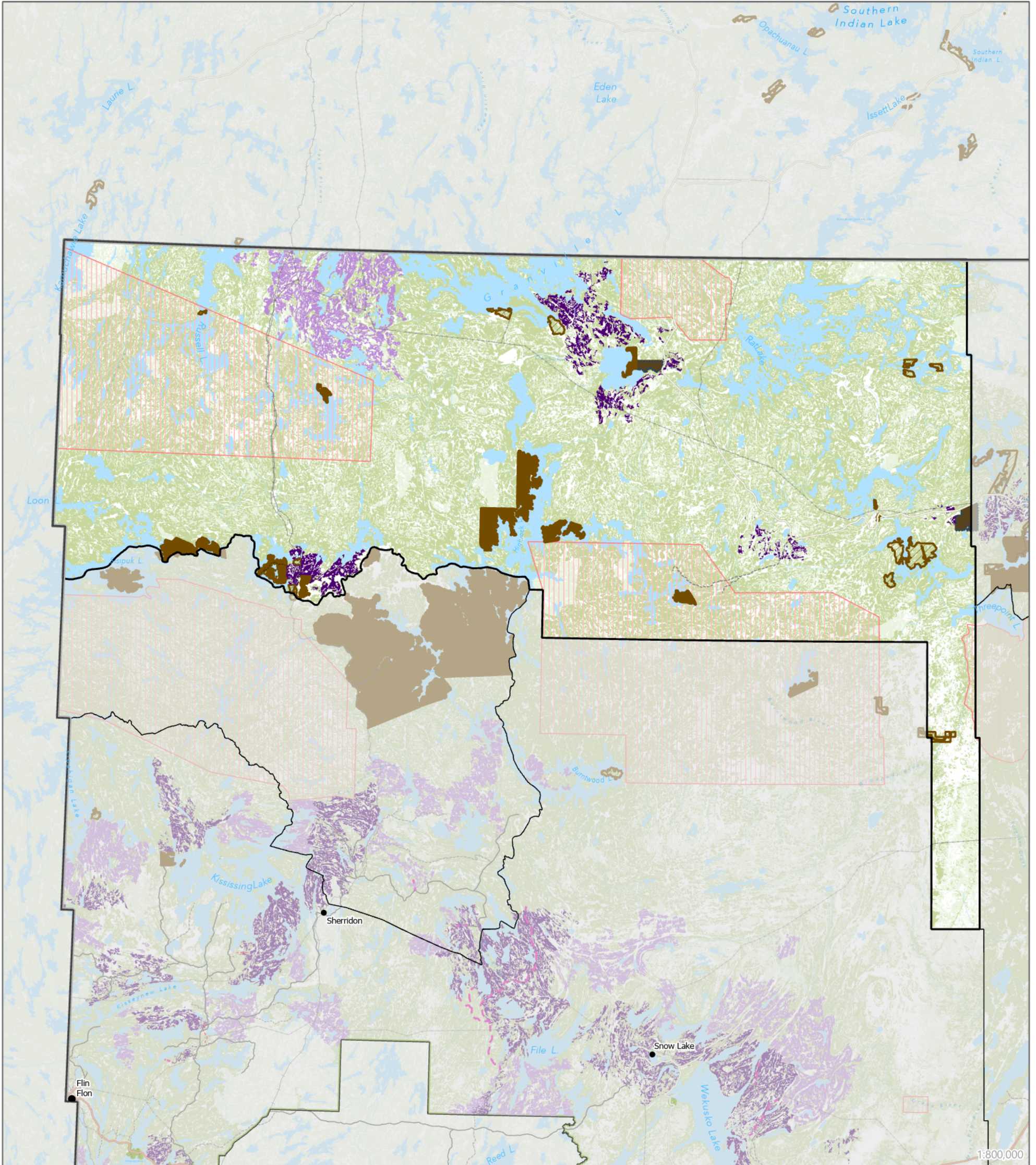


Forest Management License Area No. 2 (FML2)

Areas Selected for Potential Harvest Operations
 20-Year Forest Management Plan
 January 2027 to December 2046
 and projected January 2047 to December 2066
Refined Habitat Scenario



FMU 69



Reference

- Towns
- Cities
- ◻ FML No. 2
- ◻ FMU Boundary
- ◻ Productive Forest Stands
- ~ Rivers and Streams
- ~ Waterbodies

Indigenous Lands

- ◻ Indigenous Reserve Lands
- ◻ TLE
- ◻ NFA & GRFS
- ◻ Community Use & Development Areas

Provincial Designations

- ◻ Protected Areas
- ◻ Red Deer WMA - timber harvest prohibited
- ◻ Provincial Park

Areas of Special Interest

- ◻ Proposed Protected Area
- ◻ Proposed Designated Area
- ◻ Area of Special Interest

Selected Potential Harvest Areas

- ◻ Year 1 to 20
- ◻ Year 21 to 40
- ◻ Potential Access
- ◻ CKP Planned Roads

Roads & Utilities

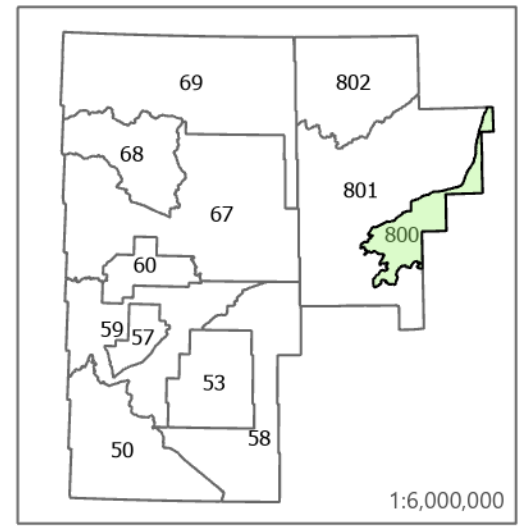
- ◻ Provincial Highway
- ◻ Provincial Road
- ◻ All-Weather
- ◻ Other
- ◻ Rail
- ◻ Transmission lines



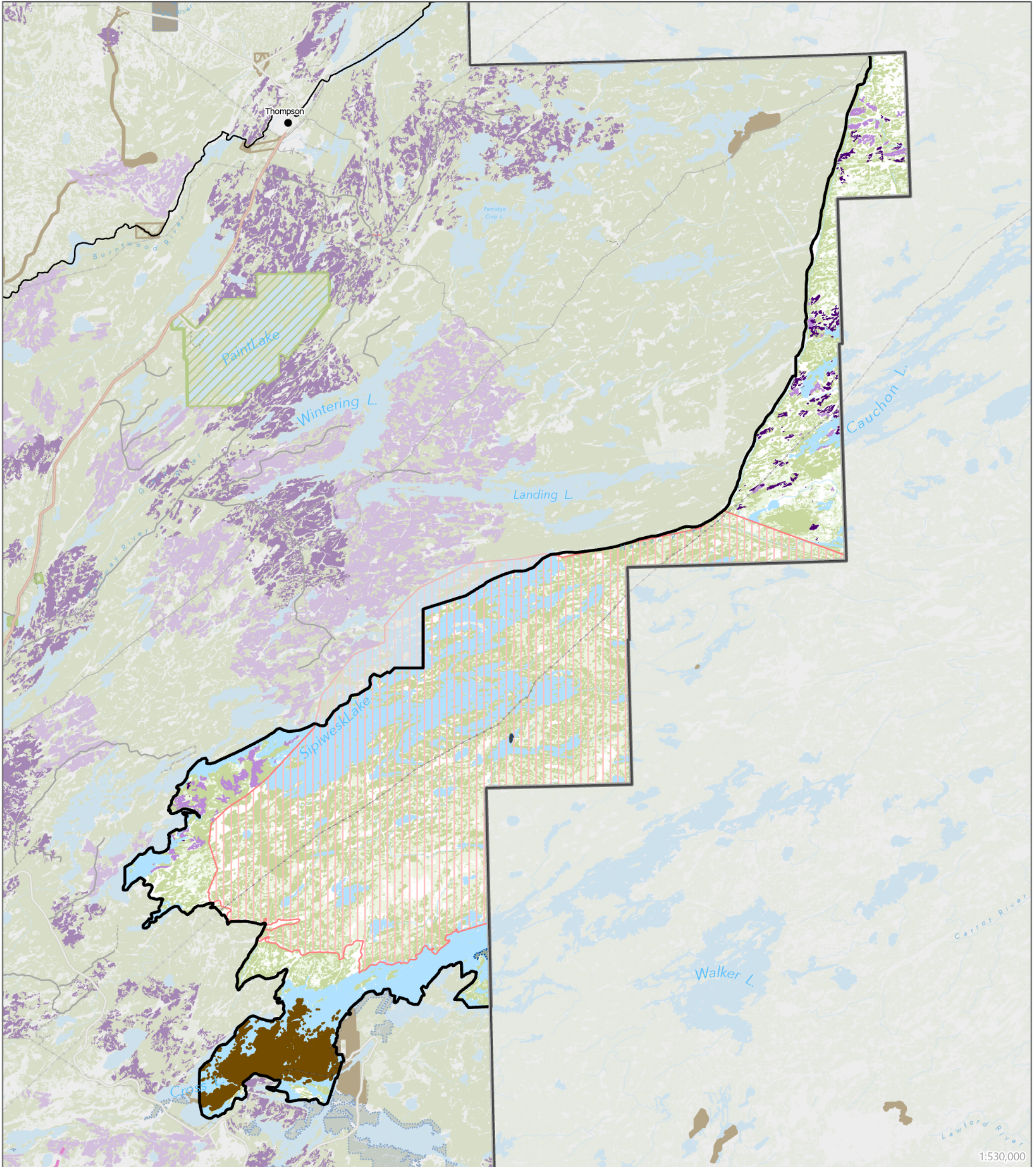


Forest Management License Area No. 2 (FML2)

Areas Selected for Potential Harvest Operations
 20-Year Forest Management Plan
 January 2027 to December 2046
 and projected January 2047 to December 2066
Refined Habitat Scenario



FMU 800



Reference

- Towns
- Cities
- ◻ FML No. 2
- ◻ FMU Boundary
- ◻ Productive Forest Stands
- ◻ Rivers and Streams
- ◻ Waterbodies

Indigenous Lands

- ◻ Indigenous Reserve Lands
- ◻ TLE
- ◻ NFA & GRFS
- ◻ Community Use & Development Areas

Provincial Designations

- ◻ Protected Areas
- ◻ Red Deer WMA - timber harvest prohibited
- ◻ Provincial Park

Areas of Special Interest

- ◻ Proposed Protected Area
- ◻ Proposed Designated Area
- ◻ Area of Special Interest

Selected Potential Harvest Areas

- ◻ Year 1 to 20
- ◻ Year 21 to 40
- ◻ Potential Access
- ◻ CKP Planned Roads

Roads & Utilities

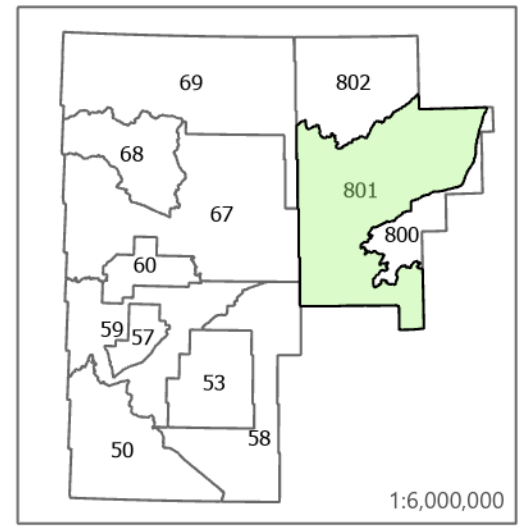
- ◻ Provincial Highway
- ◻ Provincial Road
- ◻ All-Weather
- ◻ Other
- ◻ Rail
- ◻ Transmission lines



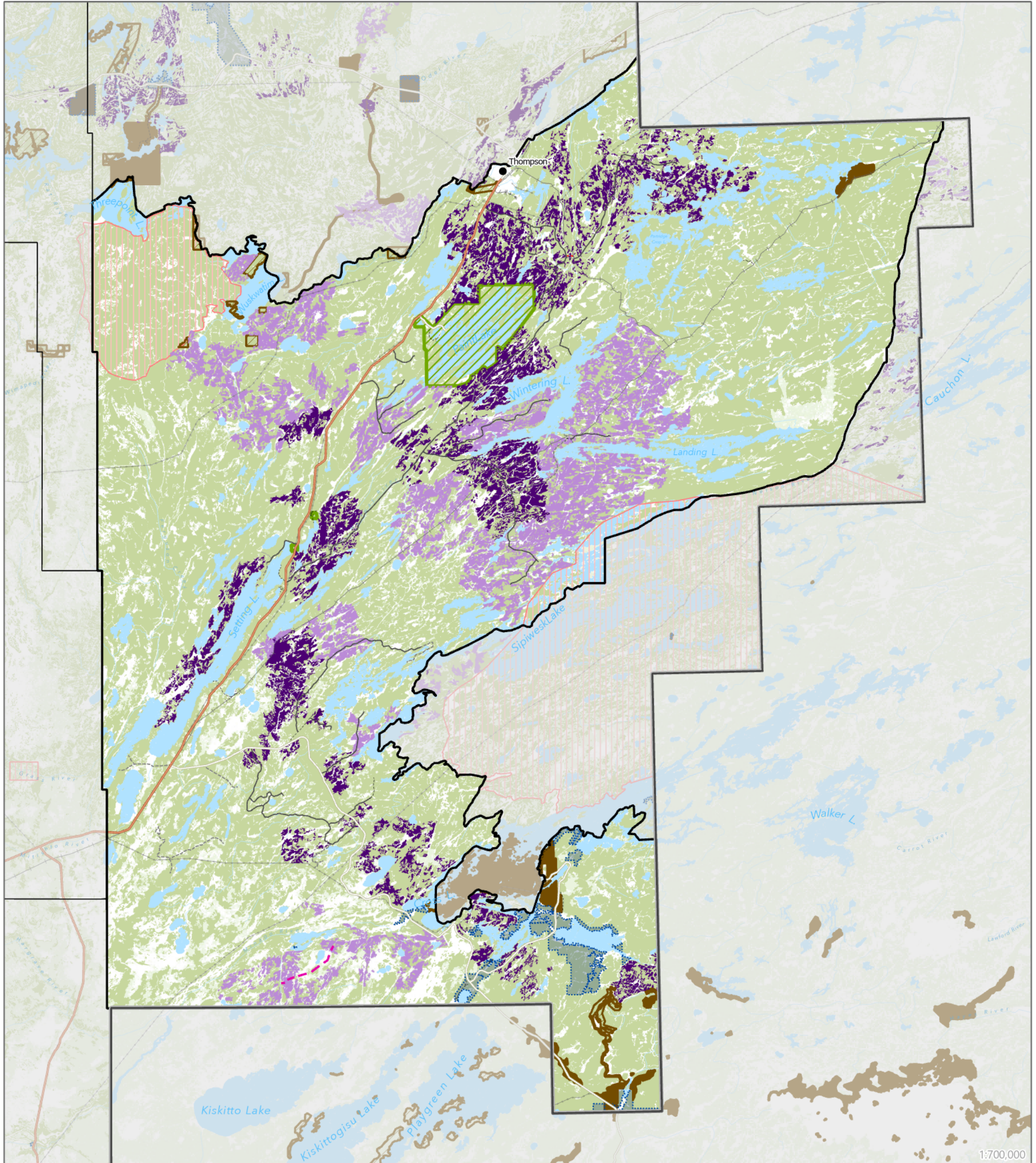


Forest Management License Area No. 2 (FML2)

Areas Selected for Potential Harvest Operations
 20-Year Forest Management Plan
 January 2027 to December 2046
 and projected January 2047 to December 2066
Refined Habitat Scenario



FMU 801



Reference

- Towns
- Cities
- ◻ FML No. 2
- ◻ FMU Boundary
- ◻ Productive Forest Stands
- ◻ Rivers and Streams
- ◻ Waterbodies

Indigenous Lands

- ◻ Indigenous Reserve Lands
- ◻ TLE
- ◻ NFA & GRFS
- ◻ Community Use & Development Areas

Provincial Designations

- ◻ Protected Areas
- ◻ Red Deer WMA - timber harvest prohibited
- ◻ Provincial Park

Areas of Special Interest

- ◻ Proposed Protected Area
- ◻ Proposed Designated Area
- ◻ Area of Special Interest

Selected Potential Harvest Areas

- ◻ Year 1 to 20
- ◻ Year 21 to 40
- ◻ Potential Access
- ◻ CKP Planned Roads

Roads & Utilities

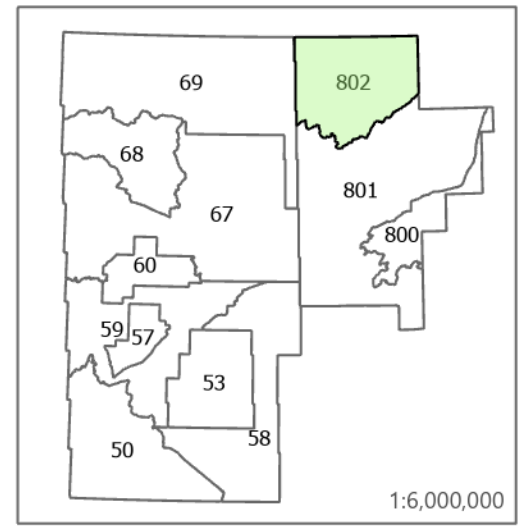
- ◻ Provincial Highway
- ◻ Provincial Road
- ◻ All-Weather
- ◻ Other
- ◻ Rail
- ◻ Transmission lines



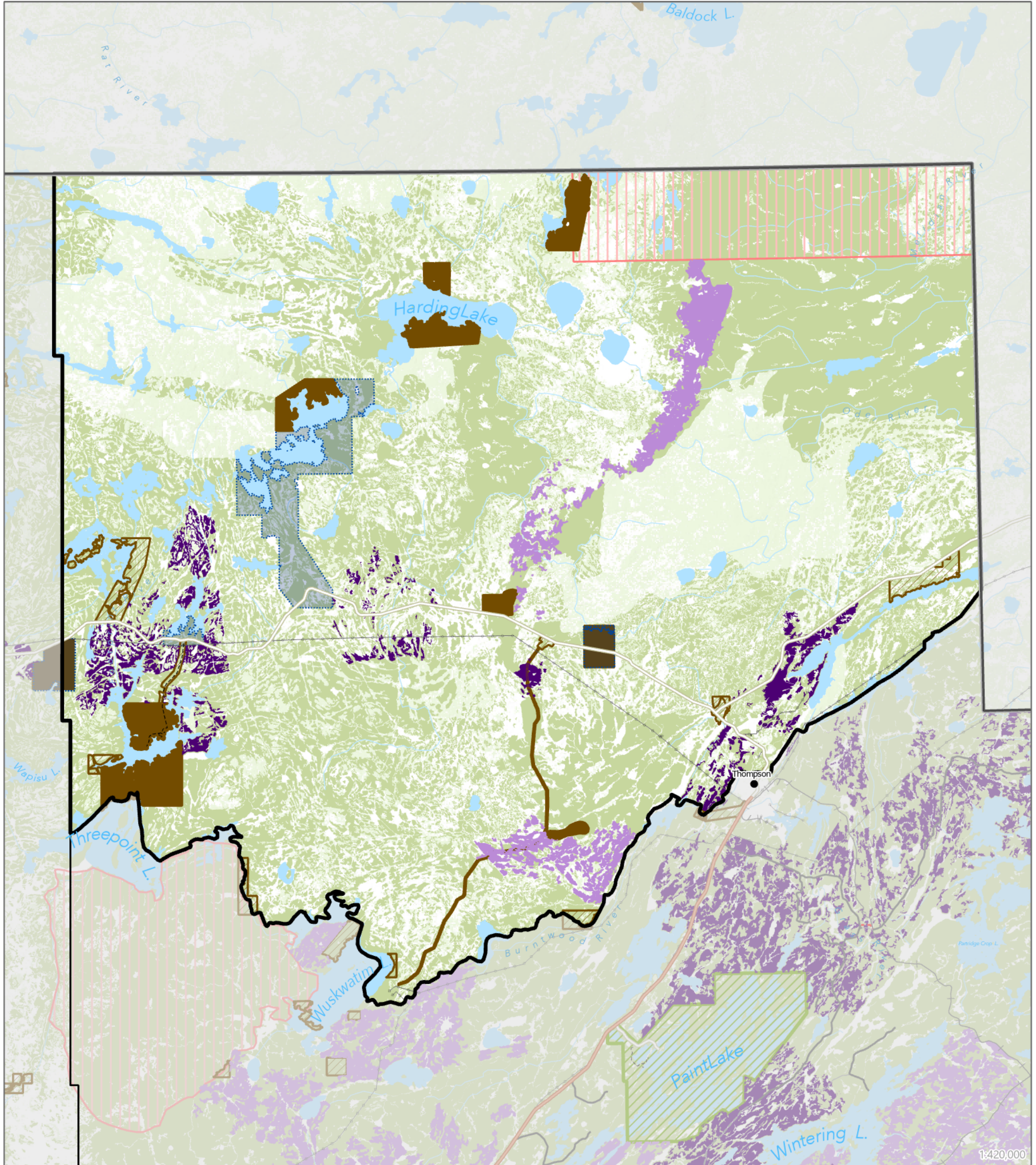


Forest Management License Area No. 2 (FML2)

Areas Selected for Potential Harvest Operations
 20-Year Forest Management Plan
 January 2027 to December 2046
 and projected January 2047 to December 2066
Refined Habitat Scenario



FMU 802



Reference

- Towns
- Cities
- ◻ FML No. 2
- ◻ FMU Boundary
- ◻ Productive Forest Stands
- ~ Rivers and Streams
- ◻ Waterbodies

Indigenous Lands

- ◻ Indigenous Reserve Lands
- ◻ TLE
- ◻ NFA & GRFS
- ◻ Community Use & Development Areas

Provincial Designations

- ◻ Protected Areas
- ◻ Red Deer WMA - timber harvest prohibited
- ◻ Provincial Park

Areas of Special Interest

- ◻ Proposed Protected Area
- ◻ Proposed Designated Area
- ◻ Area of Special Interest

Selected Potential Harvest Areas

- ◻ Year 1 to 20
- ◻ Year 21 to 40
- ◻ Potential Access
- ◻ CKP Planned Roads

Roads & Utilities

- ◻ Provincial Highway
- ◻ Provincial Road
- ◻ All-Weather
- ◻ Other
- ◻ Rail
- ◻ Transmission lines

