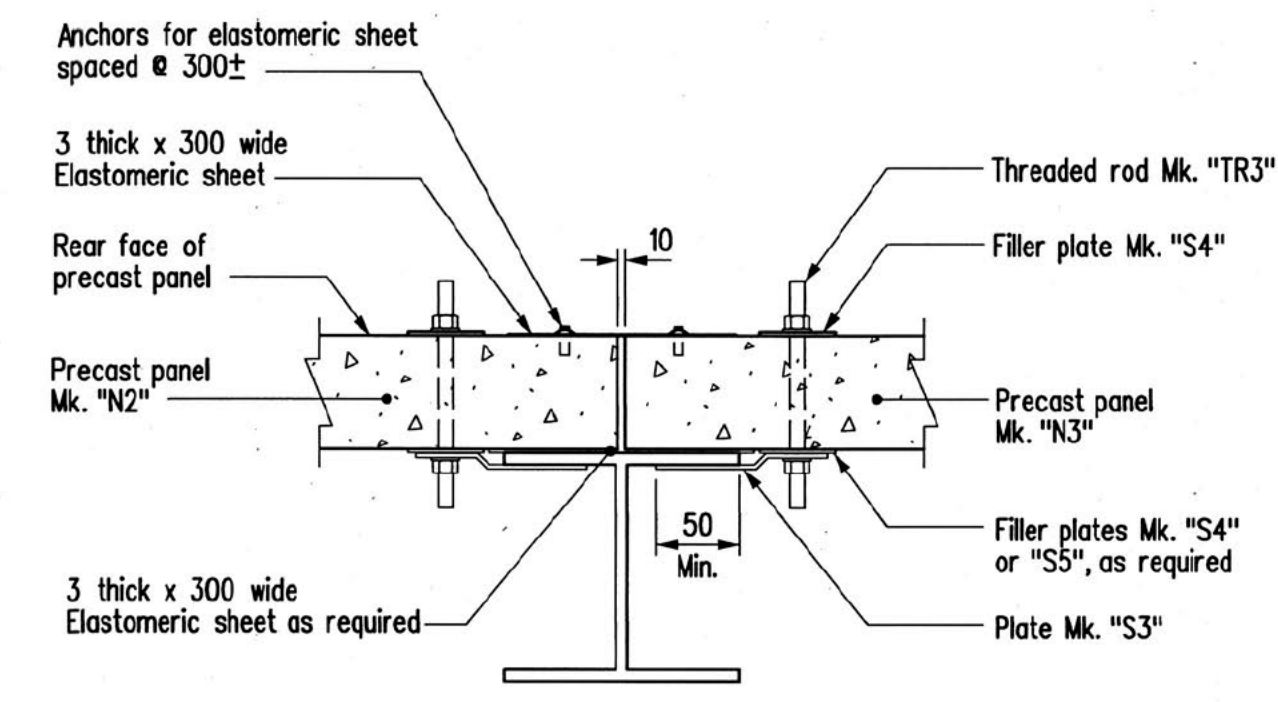


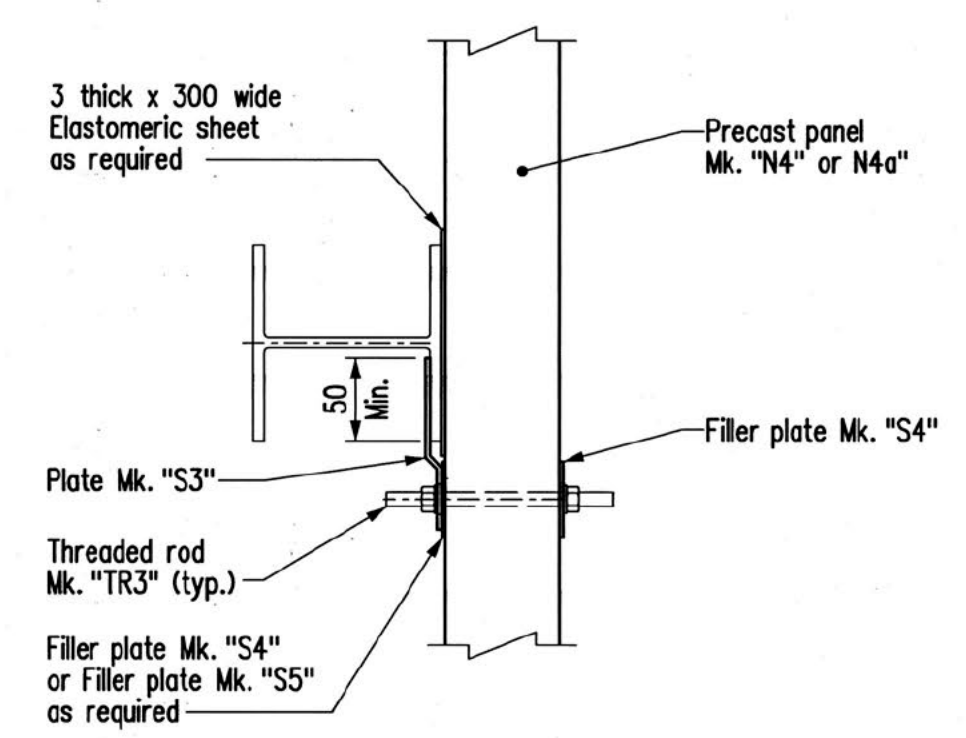
**PART PLAN**

Showing abutment and pile bent  
Asphalt and bridge railing not shown for clarity



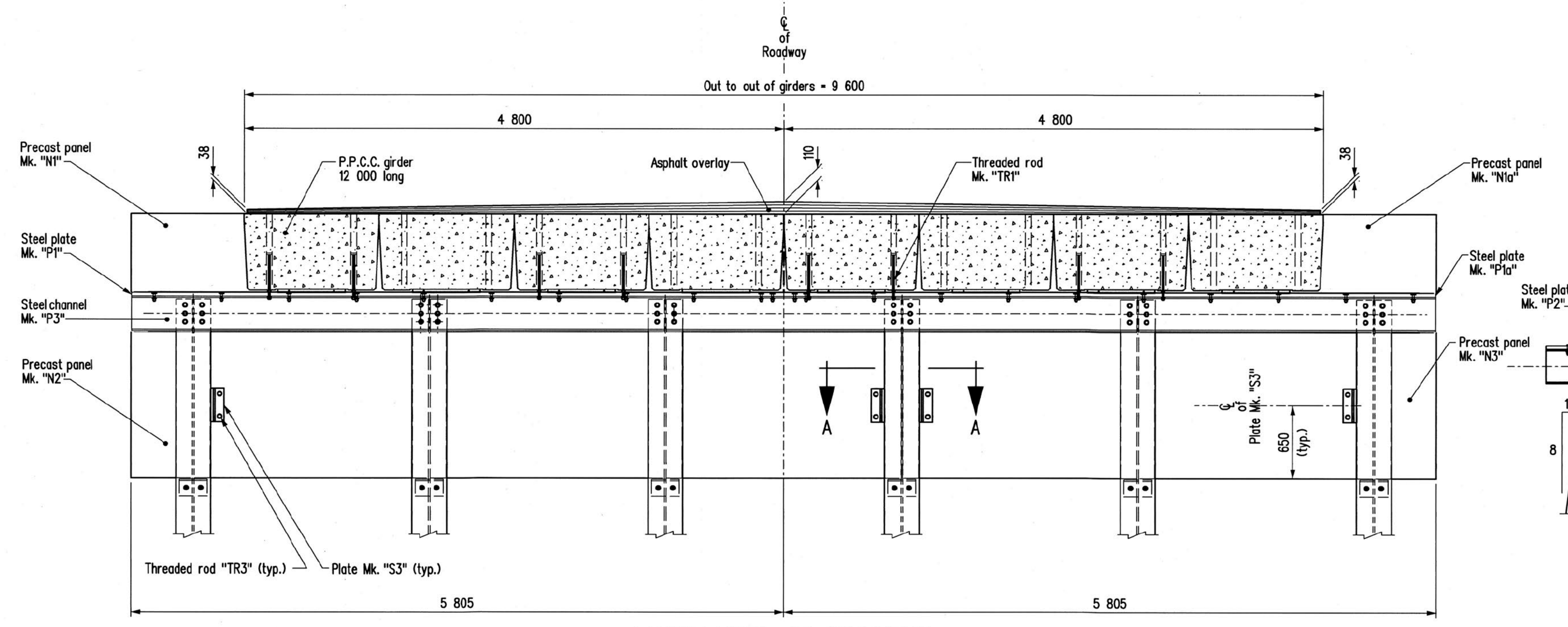
**SECTION A-A**

Scale 1:10



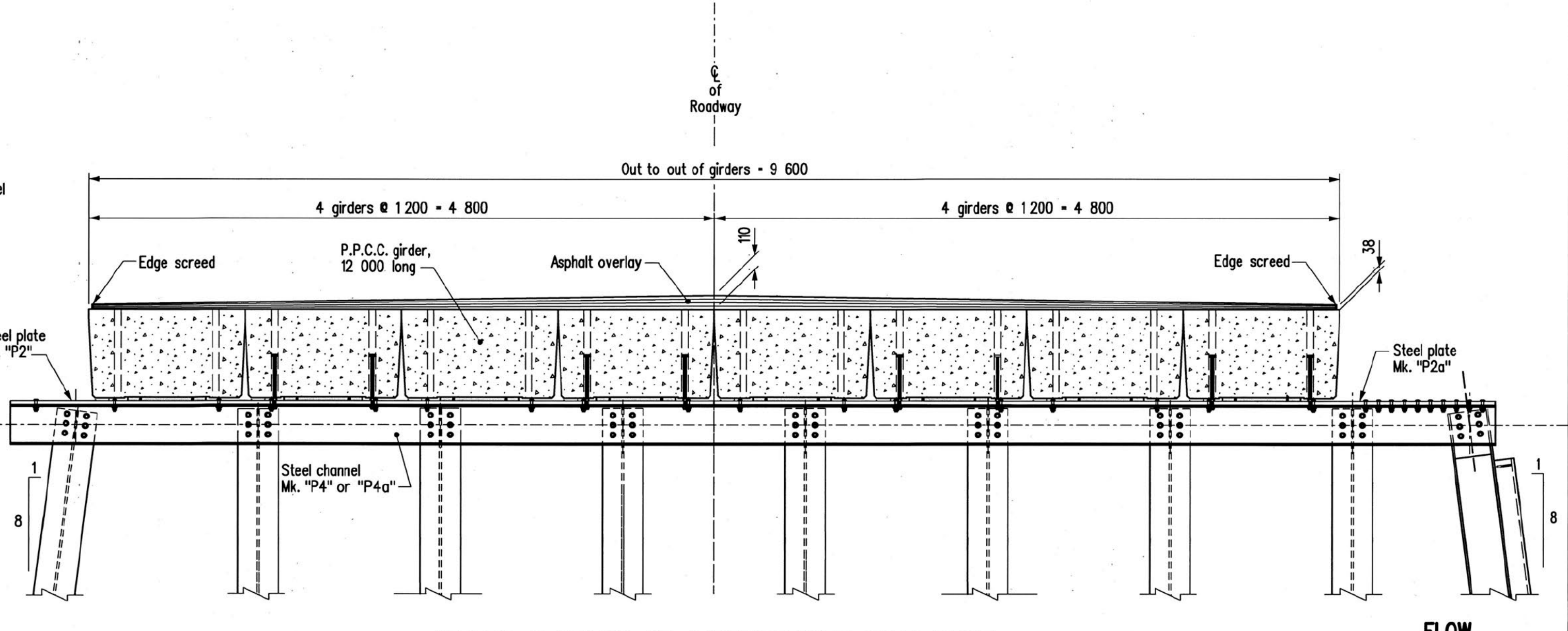
**DETAIL "A"**

Scale 1:10



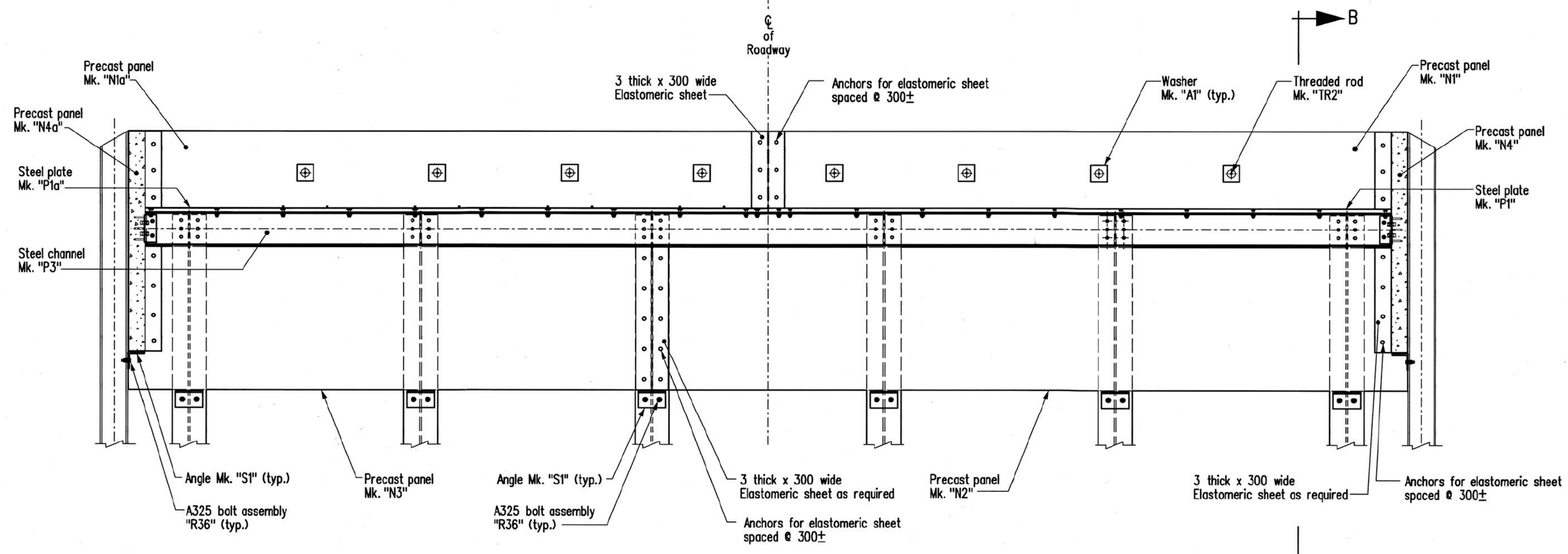
**FRONT VIEW AT ABUTMENT**

Bridge railing not shown for clarity



**CROSS SECTION AT INTERMEDIATE PILE BENT**

Bridge railing and cross bracing not shown for clarity



**REAR VIEW AT ABUTMENT**


Bridge railing not shown for clarity

**NOTES:**

- For Section "B-B" and DETAIL "B" see STD PPCC\_PR\_9.6\_12m\_AD03.
- For "BILL OF MISCELLANEOUS METAL" see STD PPCC\_PR\_9.6\_12m\_IB\_S002 Sheet 2 of 2.
- The Contractor shall field drill 22  $\phi$  holes in the precast panels for threaded rods Mk. "TR3". Should rebar be encountered, abandon hole, patch and drill in new location. Rebar locations are marked on the panels by the Panel Fabricator.
- Back faces of the upper and lower ballast walls/precast panels shall be aligned in the same vertical plane.
- The Contractor shall ensure that the upper ballast walls/precast panels are placed with the edge 5 mm from  $\phi$  of roadway.

REVISIONS		ASSEMBLY DETAILS	
DATE	BY	DESCRIPTION	APPROVED BY
			Original signed by John Logan Dec. 13, 2022 DIRECTOR OF BRIDGES AND HIGHWAY STRUCTURES
			DATE
			SCALE
			SHEET No.
			of 08 shown

DESIGN SEAL	RECORD SEAL	<p><b>Manitoba</b> </p> <p>Transportation and Infrastructure Bridges and Highway Structures</p>	<p>BY: <u>A.H.P.</u></p> <p>CHECKED: <u>A.H.P.</u></p>	
Original signed by Andy Pankratz Nov. 2, 2022				<p>BY: <u>K.P.</u></p> <p>CHECKED: <u>A.H.P.</u></p>
				<p>SCALE: <u>1:30</u></p> <p>SHEET No. _____</p>

STD No. PPCC\_PR\_9.6\_12m\_IB\_AD05