

# LAKE MANITOBA LAKE ST. MARTIN

Ji-zaagijjiwangin Ziibiikaanan Izhichigewin

## Epiitaagamingin Nibii, Bemijiwang Minik Nibi

### Aaniin Wenji-izhichigeng Owe

O'owe aaniish aandi eyaamagak Manitoba aaniin gaye ayinadinaag, miziwe daa-wenji-mooshka'an. Zhaawanong, waabanong, ningaabiwanong onjjiwan nibi izhi Manitoba jibwaa giiwedonong izhijiwang izhi Hudson Bay (nashke Figure 1). Odaanaang gete Manitoba gii-inakamigaa onji gete mikom wajiin, mii dash niibowa iwe aki nabagakamigaa, mii wenji-mooshka'ang apii ozhi'omagak nibi ningoji onji. Geget Manitoba wenji-mooshka'an, aazha dash odaanaang gegoon gii-bi-izhichigem ji-ategin imaa gegoon ji-wiiji'iwemagakin apii ningoji mooshka'ang.

2011 gaa-akiiwang, zhaawanong Manitoba miziwe gii-mooshka'am, zhigwa Lake Manitoba gii-ishpaagamin nibi onji Waterhen River, Whitemud River zhigwa Portage Diversion. Onjida ji-ozhichigaadegin ini ziibiikaanan ji-zaagijjiwang nibi onji Lake Manitoba zhigwa Lake St. Martin ji-bimenjigaadeg nibi omaa Manitoba. Aaniin minik epiichi-mooshka'ang Assiniboine Ziibi, Lake Manitoba zhigwa Lake St. Martin, gii-gaashipoose aaniin minik nibi ge-bimenjigaadeg. Jiigibiig zhigwa nibiin eyaamagakin Lake St. Martin gii-mooshka'an, mii Anishinaabeg onji imaa zhigwa imaa gechiwaag gii-maajinzhawaawag iwe onji.

Ini Lake Manitoba zhigwa Lake St. Martin Ziibiikaanan (Outlet Channels Project) gii-onachigaade ji-bimenjigaadegin nibiin ji-mooshka'anzinog. Apii ishpaagaming nibi, daabishkoo 2011 gaa-gii-mooshka'ang, iwe Ziibiikaan izhichigewin daa-wiiji'iwemagad 5% nibi Lake Winnipeg gaa-izhijiwang, gaawin dash daa-migoshkaajichigemagasinoo (7cm) izhi Lake Winnipeg gaa-apiitaagaming. Bangii eta gii-aanjise minik gaa-bi-izhisege odaanaang.

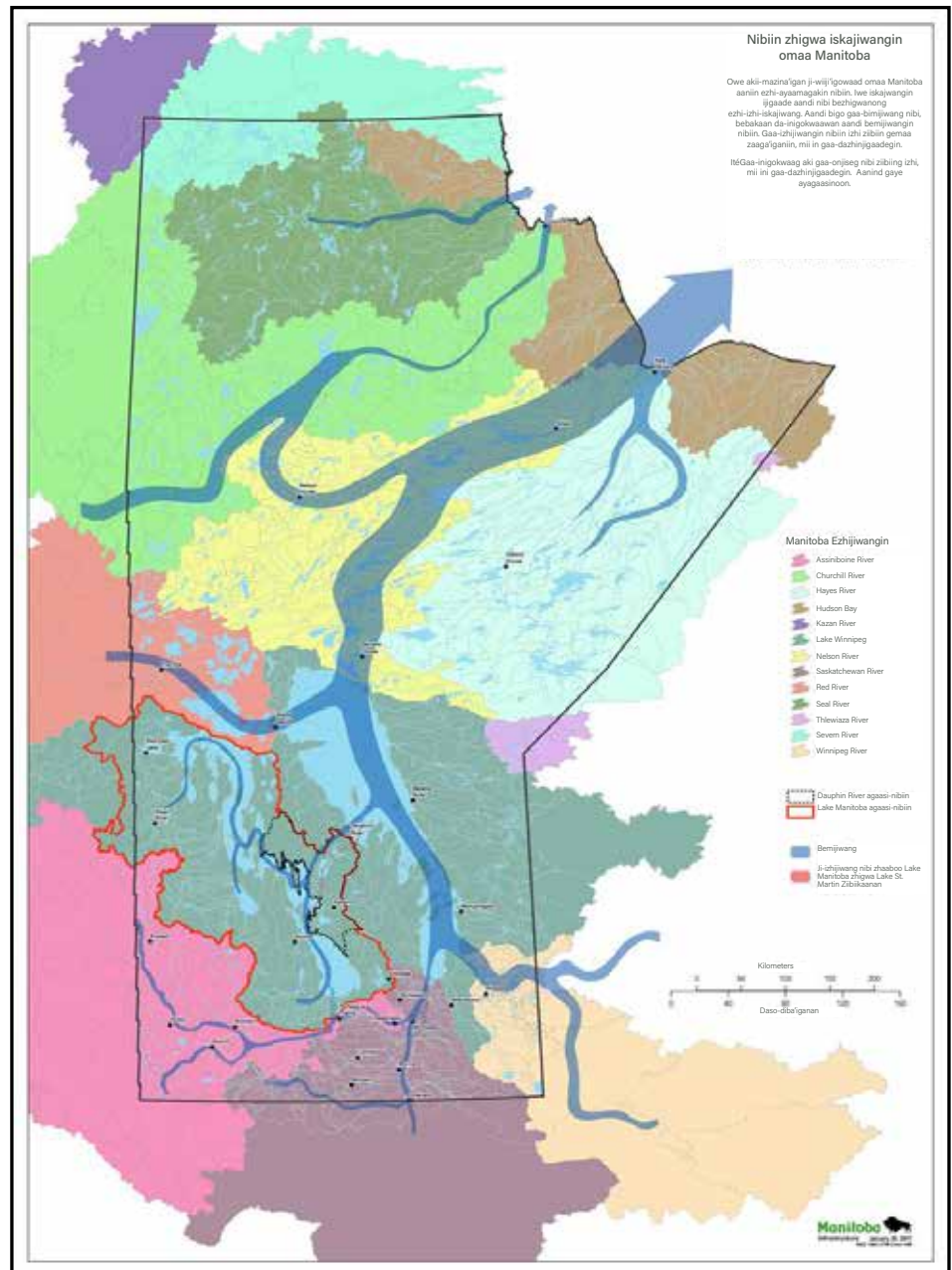


Figure 1: Gaa-apichijiwang nibi gechiwaag imaa Winnipeg nibiin

## Ji-mooshka'anzinog

Iwe Outlet Channels Project gaa-ijigaadeg da-wiji'iwese ji-iska'igaadeg nibi Lake Manitoba zhigwa Lake St. Martin apii mooshka'ang. Giitwaam izhisemagak daabishkoo 2011 gaa-izhiseg, anokiimagakin Ziibiikaanan, nawach da-dabasaagamin 1.48 mizid

Lake Manitoba (Figure 2) zhigwa 2.1 mizid minik da-dabasaagamin nibi Lake St. Martin, mii nawach da-niisise ge-mooshka'ang minik 470. km<sup>2</sup>.

Owe izhichigewin ji-wiji'iwemagak ji-mooshka'anzinog apii ishpaagaming nibi Lake Manitoba zhigwa Lake St. Martin.

Figure 2: Epiitaagamingin Lake Manitoba

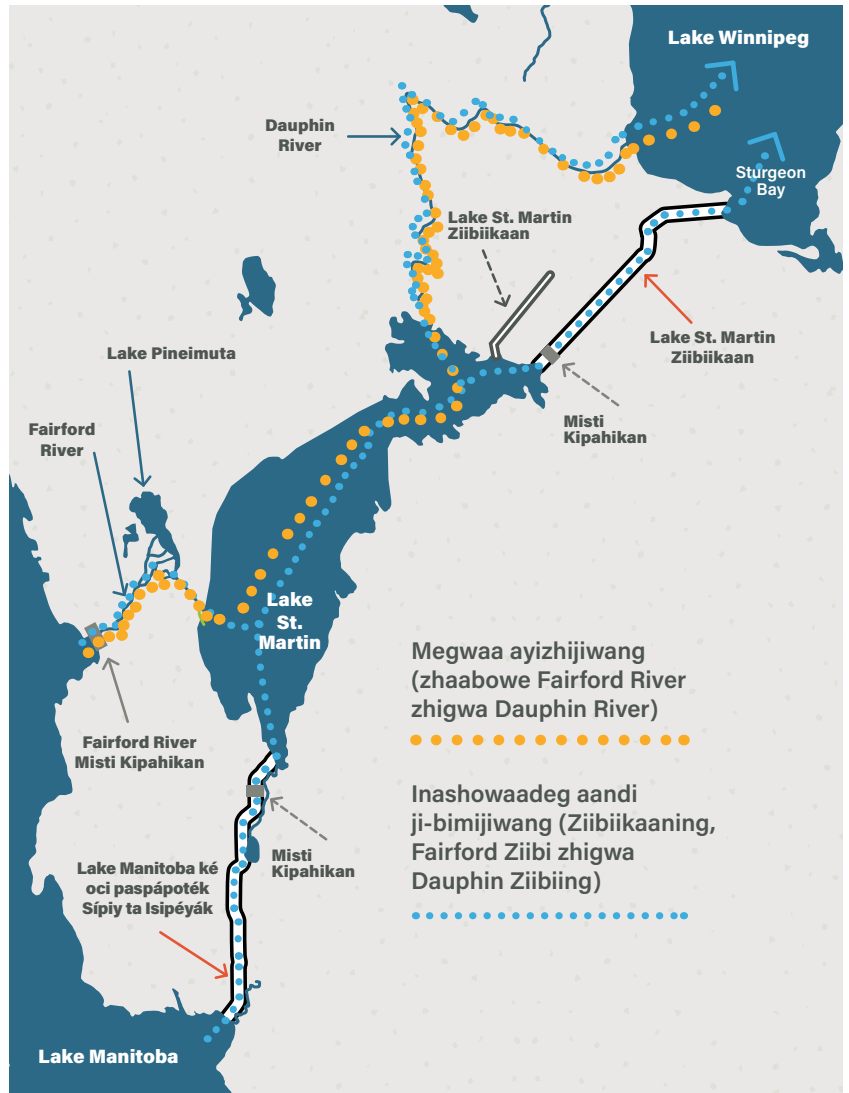


Figure 3: Epiitaagamingin Lake St. Martin



Aanikesinooon Lake Manitoba, Lake St. Martin zhigwa Lake Winnipeg imaa Fairford, Dauphin ziibiin. Megwaa nibi onjijiwan Lake Manitoba, zhaaboo Fairford River izhi Lake St. Martin, mii Lake St. Martin onji, zhaaboo Dauphin River izhi Lake Winnipeg. (Figure 4: ozaawi-mamazinaa). Ini oshki-ziibiikaanan, gaawiin wiijitoosiin ji-ishpaagaming nibi izhijiwang Lake Winnipeg, gaawiin dash nawach da-gidaatabijiwanzinooon nibi onji Lake Manitoba (Figure 4: ozaawashko-mamazinaa).

Figure 4: Ezhijiwang Nibi





## Aaniin ge-izhiseg epiitaagaming nibi naanzibiig Lake Winnipeg?

Gaawiin ziiibiikaanan izhichigewin inenjigaadesinooon ji-ani-meshkwajiseg Lake Winnipeg gemaa naanzibiig.

Igi Manitoba Transportation and Infrastructure ogikendaanaawaa' aaniin odaanaang 1950 gaa-akiiwang aaniin ani-niigaan ginwezh ji-ani-ayaawaad waasigan Lake Manitoba. Gaawiin dash gegoo waabanjigaadesinooon aaniin enenjigaadeg gegoo ji-ikidong.

Iwe Operations of the Outlet Channels Project gaa-ijigaadeg wiji'igowaa' Manitoba Hydro. Iwe izhichigewin, gaawiin gii-onachigaadesinooon ji-bimenjigaadeg nibi Lake Manitoba gemaa Lake St. Martin ji-waasiganikeng onji. Iwe gaye izhichigewin ji-wiji'iwemagak gaa-izhijiwang Lake Winnipeg waasiganikewin onji imaa Nelson River. Apii maajii-anokiimagakin ini ziiibiikaanan, nawach da-gizhijiwan nibi Lake Manitoba onji izhi Lake St. Martin ji-izhijiwang izhi Lake Winnipeg ji-wiji'iwemagak apii mooshka'ang imaa gechiwaag, gaawiin dash awashime nibi da-izhijiwanzinooon.

Igi Manitoba Hydro obimendaanaawaa' Lake Winnipeg onashowewin ji-giizhanokiimagak ji-niisiseg nibi gaa-nitaa-mooshka'ang Lake Winnipeg bekish wiji'iwemagak waasigan onji ogo Manitoba eyaawaad. Iwe Manitoba Hydro oga-ani-bimendaanaawaa' naagajitoowaad aaniin ayizhisenig nibi imaa onashowewining Lake Manitoba. Apii awashime ishpaagaming 715 mizid, igi Manitoba Hydro ji-bimendamowaad iwe Jenpeg aaniin maawanj ge-izhi-gizhijiwang. Apii gaa-mooshka'ang 2011, iwe ziiibiikaan da-wiji'iwemagak maagizhaa daa-ishpaagamin (7cm) gaa-onjijiwang onji Lake Winnipeg bangii ani-ishpaagaming naanzibiig. Meshkwajisegin aaniin ayizhijiwangin nibiin imaa Nelson River onji, gaawiin igo daa-aanjisesinooon iwe minik. Imaa Cross Lake nake, maagizhaa daa-ishpaagaming 6.1 cm daabishkoo gaa-mooshka'ang 2011, mii gaye Split Lake daa-ishpaagaming 1.0 cm apii mooshka'ang 2005 gaa-akiiwang. Ono meshkwajisewan eta apii gichi-mooshka'ang Lake Winnipeg apii aazha ishpaagaming imaa.

## Kinatawénimitinán Kitapé Kakitosiyák Óméniw oci

Kinatawénimitinán tapé wítamawiyák óma tánisi ké isi pakamiskikémakak óma itowa atoskéwina pé itotéyani ité óma oci ká máwawapinániwak, wéká ta kakitotacik anikik ité ká ayáyan atoskéwinik Itáwin Onfákaninawénicikéw, kici okimáwiwin astoskéwikamikwa, wéká kakinaw owítatoskénákanak wéká óté kikakí itápin ékwéniw oci [outletchannels@gov.mb.ca](mailto:outletchannels@gov.mb.ca). Tánisi ásay étóccikániwak anima Sípiy ta Isipéyák Atoskéwin óté itápi [Outlet Channels Project website](#).

## Giiyaabi gegoo noonde-gikendaman

Bebakaan ozhibi'igewinan gii-ozhichigaadewan ji-gikenjigaadeg wegonenan eyaamagakin imaa Outlet Channels Project izhichigewin gaa-ijigaadeg, daabishkoo:

- Eyaamagakin Izhichigewining
- Ge-maamiinochigaadegin Izhichigewining
- Wenji-dazhiikigaadeg
- Meshkwajichigaadegin
- Enokaadegin

Ta kinawápataman ta ayamítáyan óhi itowa kiskénitamowi masinahikana óté itápi [Outlet Channels Project website](#).