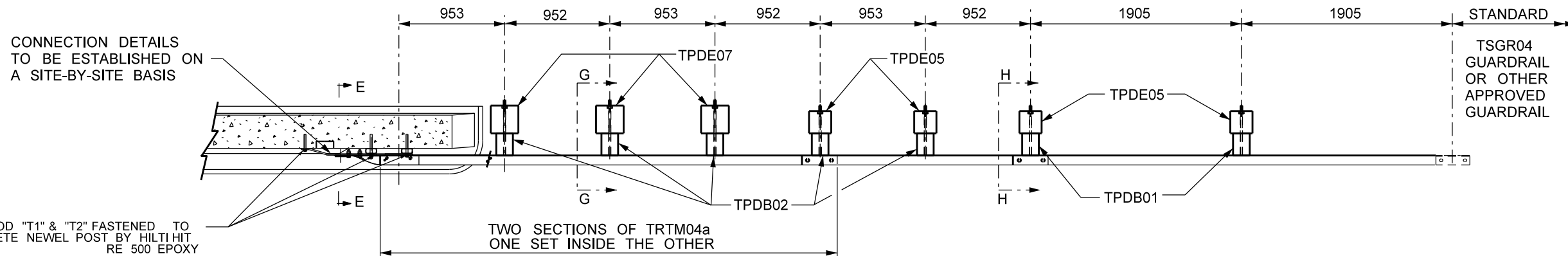


ELEVATION 1:50



PLAN 1:50

NOTES:

1. THE CONNECTION PLATE SHALL BE USED AS A TEMPLATE TO CORE HOLES INTO THE NEWEL POST.
2. CARE SHALL BE TAKEN TO ENSURE HOLES ARE CORED ACCURATELY WITH MINIMAL DAMAGE TO NEWEL POST. USE OF ROTARY HAMMER DRILL WILL NOT BE ALLOWED.
3. USE HILTI HIT RE 500 EPOXY TO FASTEN THREADED RODS TO CONCRETE NEWEL POST AND EMBED THE THREADED RODS 100 mm INTO THE CONCRETE NEWEL POST.
4. INSTALLATION OF ALL REQUIRED THREADED RODS AND LOCK NUTS CONSIDERED INCIDENTAL TO CONNECTION PLATES.
5. BOLT TBFF04 TO BE INSTALLED IN UPPER HOLE OF RAIL, BLOCK AND POST
6. BLOCKOUT TO BE NAILED TO POST TO PREVENT ROTATION USING 90 mm NAIL.
7. THE TOP BOLT THROUGH SPACER "SP2" AND THE NEWEL POST MAY BE ELIMINATED IF THE FIRST POST OF THE BRIDGE CANNOT BE INSTALLED PROPERLY. THE SPACER IS TO BE CONNECTED TO THE CONNECTION PLATE "AP1" USING A "C3" HEX. BOLT. THE DIMENSION OF 125 mm WILL THEN APPLY TO THE MIDDLE HOLE OF "SP2".

ALL SCALES ARE APPROXIMATE

NOTE: Original structural drawing sealed by J. Lukashenko P.Eng., Feb.23, 2000. It is filed in the Bridges and Structures Branch.

REVISIONS		
DATE	DESCRIPTION	BY
2006-04	ANCHOR REVISED	HPL

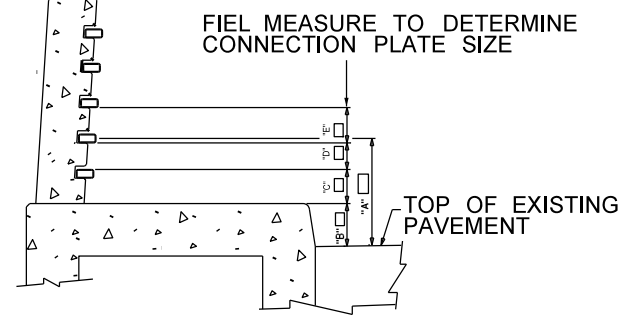
Manitoba Infrastructure and Transportation
TRAFFIC ENGINEERING



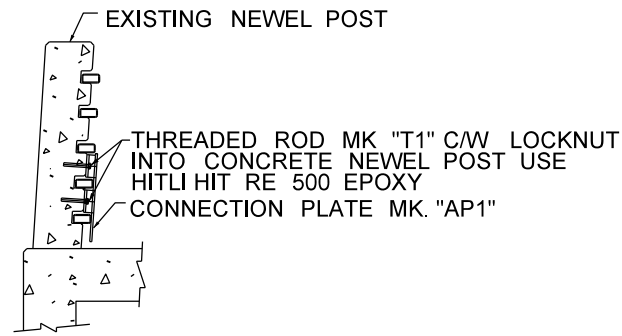
NESTED THREE BEAM TO 5 RAIL NEWEL POST TRANSITION

SHEET NO	1 OF 2
DATE:	2006 - 04
DRAWN:	D.C.

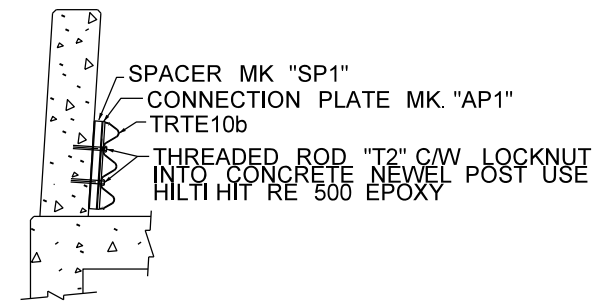
TSTB09



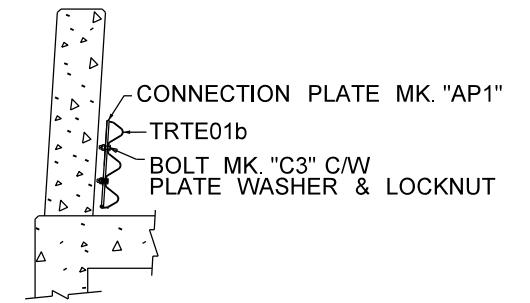
SECTION A-A 1:50
FIELD MEASUREMENTS



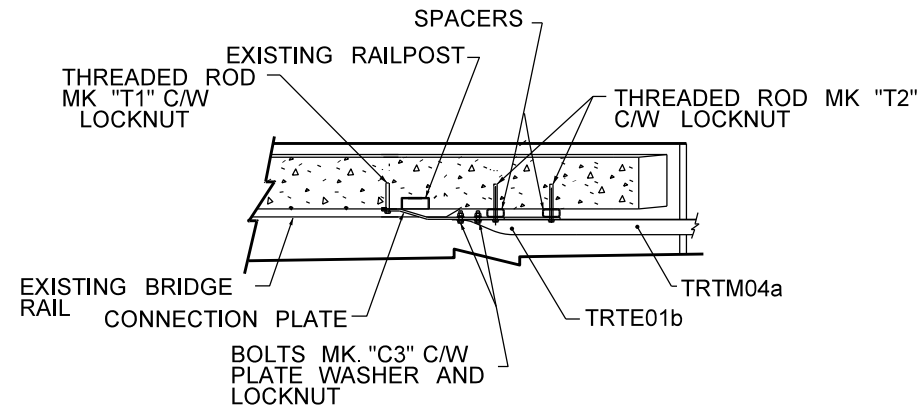
SECTION B-B 1:50



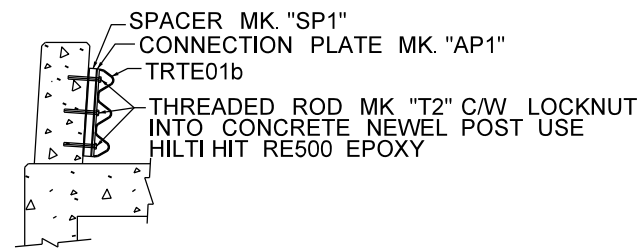
SECTION D-D 1:50



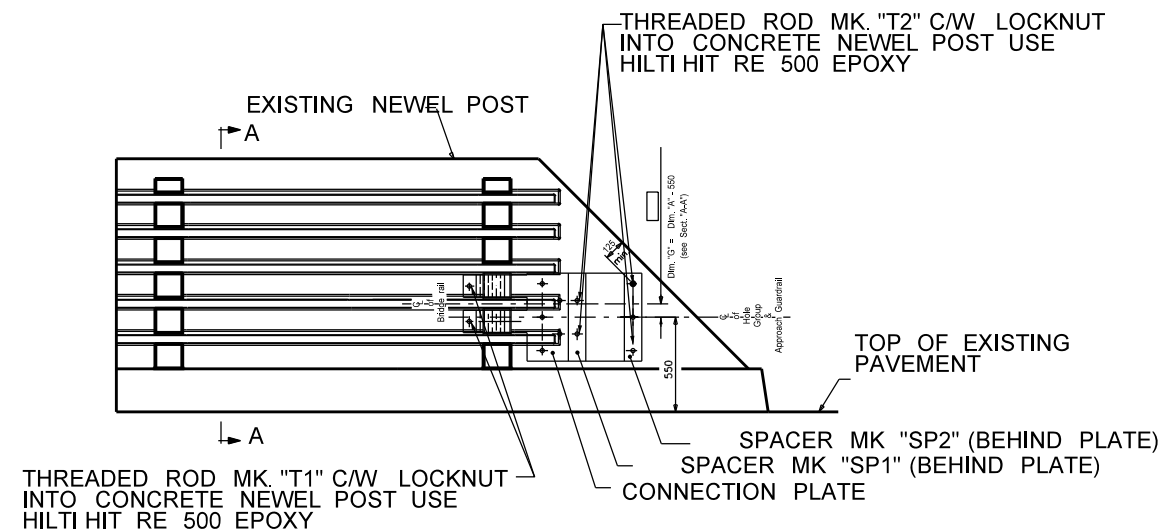
SECTION C-C 1:50



PART SECTION E-E 1:50

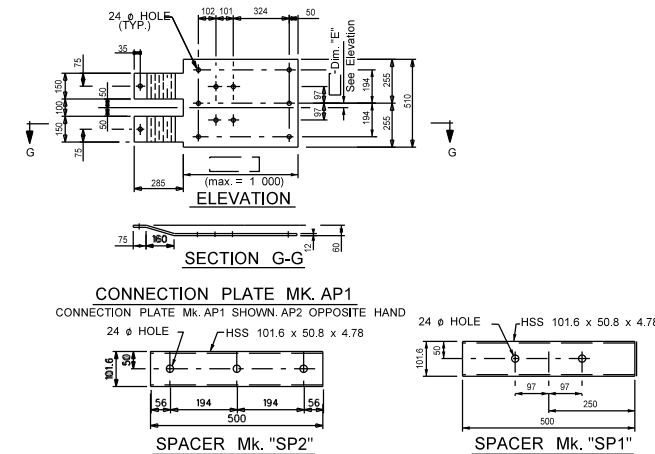


SECTION F-F 1:50



ELEVATION 1:50
SHOWING CONNECTION PLATE ASSEMBLY

BILL OF MISCELLANEOUS METAL						SITE NO.	
MARK	No.	DESCRIPTION	SIZE		MASS PER UNIT	TOTAL MASS	
AP1		CONNECTION PLATE	PLATE, 12 THICK	AS DETAILED			
AP2		CONNECTION PLATE	PLATE, 12 THICK	AS DETAILED			
SP1		SPACER	HSS 101.6 x 50.8 x 4.78, 500 LONG	AS DETAILED	5.497		
SP2		SPACER	HSS 101.6 x 50.8 x 4.78, 500 LONG	AS DETAILED	5.497		
T1		THREADED ROD	22 ϕ x 140 THREADED ROD WITH ALL METAL LOCKNUT			N/A	
T2		THREADED ROD	22 ϕ x 190 THREADED ROD C/W ALL METAL LOCKNUT			N/A	
C3		HEX. BOLTS	22 ϕ x 50 HEX BOLT C/W ALL METAL LOCKNUT			N/A	
		PLATE WASHERS	For 22 ϕ BOLT MK. C3, ONE PER "C3"		0.052		
					TOTAL MASS	kg	



ALL SCALES ARE APPROXIMATE

NOTE: Original structural drawing sealed by J. Lukashenko P.Eng., Feb.23, 2000. It is filed in the Bridges and Structures Branch.

REVISIONS		
DATE	DESCRIPTION	BY
2006-04	ANCHOR REVISED	HPL

Manitoba Infrastructure and Transportation
TRAFFIC ENGINEERING



NESTED THREE BEAM TO 5 RAIL NEWEL POST TRANSITION

SHEET NO	2 OF 2
DATE:	2006 - 04
DRAWN:	D.C.

TSTB09