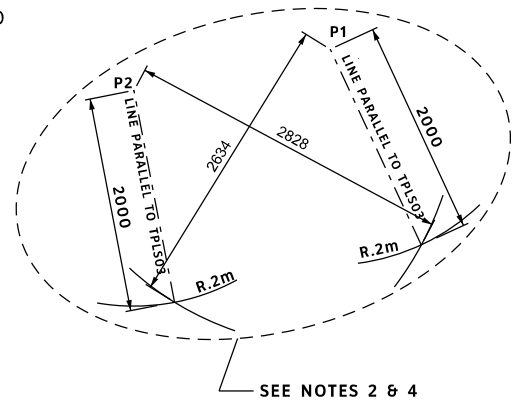
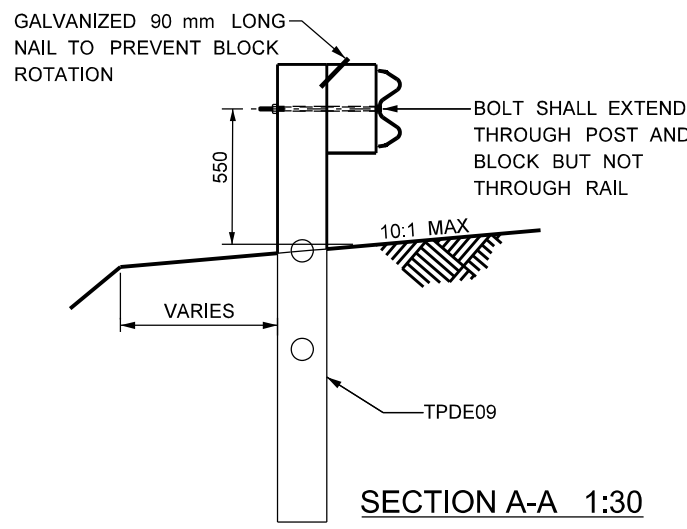
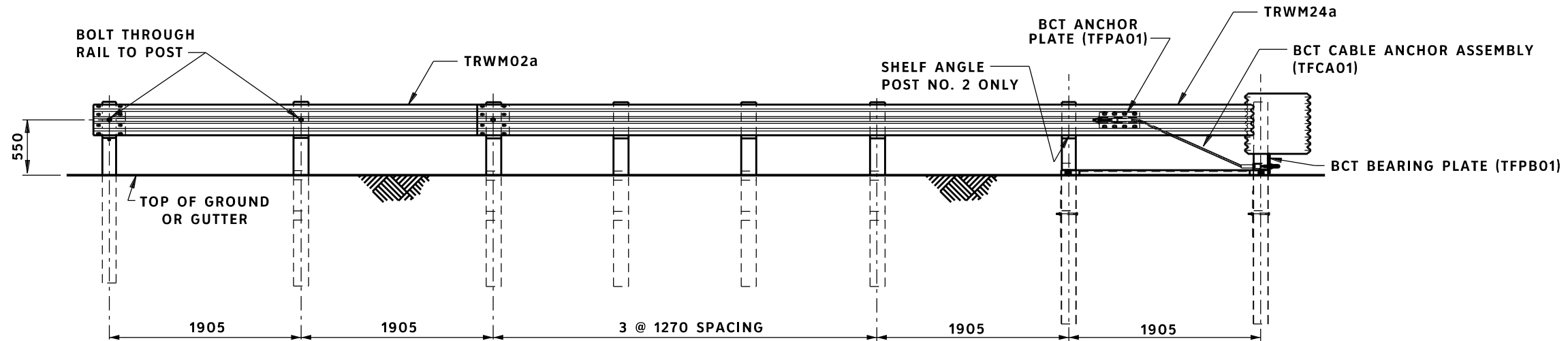
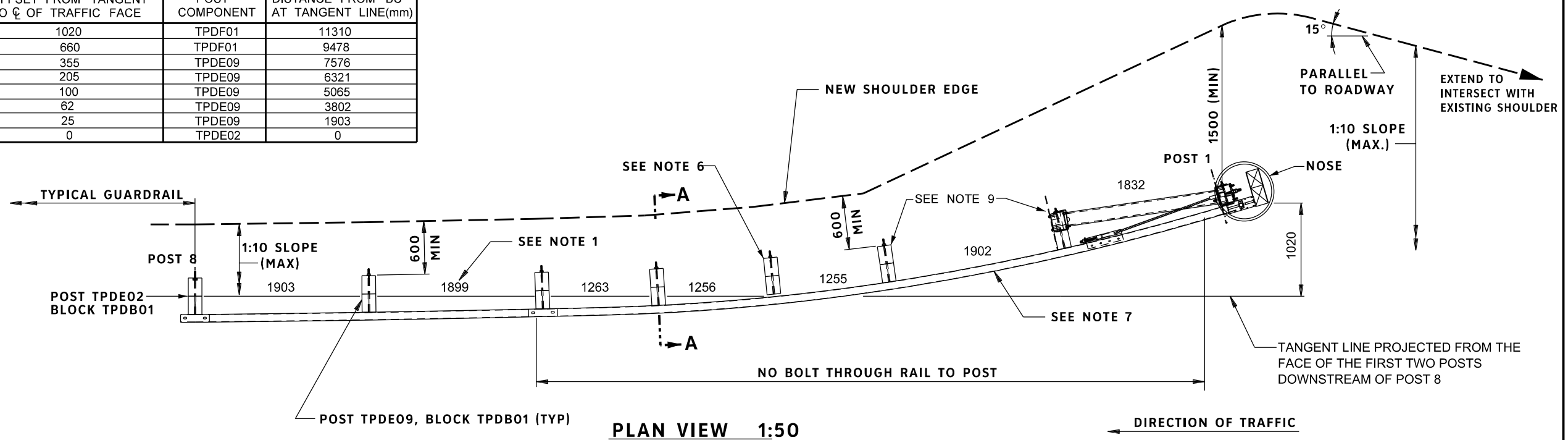


POST	OFFSET FROM TANGENT TO ϕ OF TRAFFIC FACE	POST COMPONENT	DISTANCE FROM BC AT TANGENT LINE(mm)
1	1020	TPDF01	11310
2	660	TPDF01	9478
3	355	TPDE09	7576
4	205	TPDE09	6321
5	100	TPDE09	5065
6	62	TPDE09	3802
7	25	TPDE09	1903
8	0	TPDE02	0



- NOTES:**
1. NUMBERS INDICATE CENTRE OF POST TO CENTRE OF POST MEASUREMENTS.
 2. THESE DIMENSIONS WILL PROVIDE THE CORRECT ORIENTATION OF THE FOUNDATION TUBE SOIL PLATE (TPLS03) TO ASSIST IN DRILLING HOLES IN GRADE.
 3. POST LAYOUT DIMENSIONS ARE GIVEN TO THE CENTRE OF THE TRAFFIC FACE OF THE POSTS. OFFSET POINTS ARE TO BE LOCATED BY CHORD MEASUREMENTS AT THE BACK OF RAIL EQUAL TO THE NOMINAL POST SPACING SHOWN. POSTS ARE TO BE SET APPROX. RADIAL TO THE RAILING AT EACH POST LOCATION.
 4. DIMENSIONS TO CENTRE OF POST.
 5. ALL SCALES ARE APPROXIMATE.
 6. THE BLOCKOUT (TPDB01) AT POST 4 DOES NOT CONTACT RAIL. INSTALL AFTER ALL OTHER COMPONENTS ARE IN PLACE, SEPARATION IS TO BE 25 mm.
 7. LONG 2-SPACE W BEAM RAIL (TRWM24a) IS TO BE FIELD FIT AFTER POSTS AND BLOCKOUTS HAVE BEEN INSTALLED AT CORRECT LOCATIONS; SHOP CURVED RAIL IS NOT PERMITTED.
 8. ALL DIMENSIONS ARE IN MILLIMETRES UNLESS OTHERWISE NOTED.
 9. POST MAY LEAN BACKWARDS OR RAIL MAY FLATTEN AFTER INSTALLATION AND IS NOT TO BE ADJUSTED.
 10. USE ONLY DIMENSION INDICATED FOR POST LAYOUT; DO NOT USE CAD DRAWING.

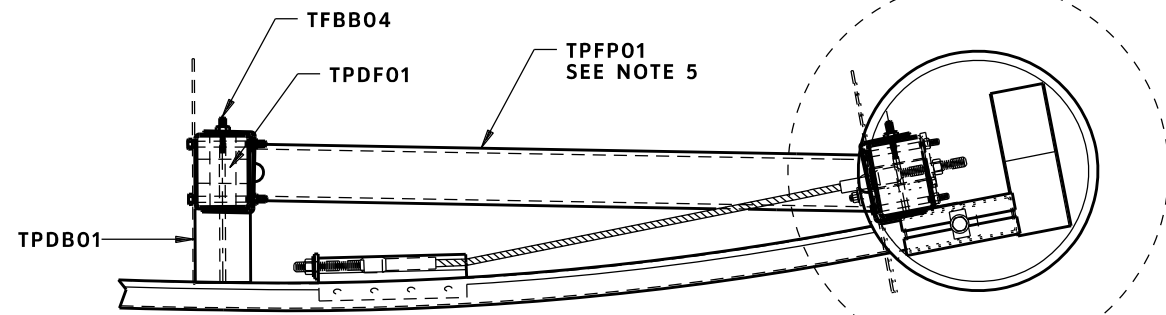
REVISIONS		
DATE	DESCRIPTION	BY
2012/11	REVISED PART	HPL
2012/12	DELETE SHEET 3 REVISED LABELS	HPL
2014/02	REVISED POST DETAILS AND LAYOUT	S.S.

Manitoba
Infrastructure and
Transportation
TRAFFIC ENGINEERING



**ECCENTRIC LOADER
BREAKAWAY CABLE
TERMINAL (ELT)**

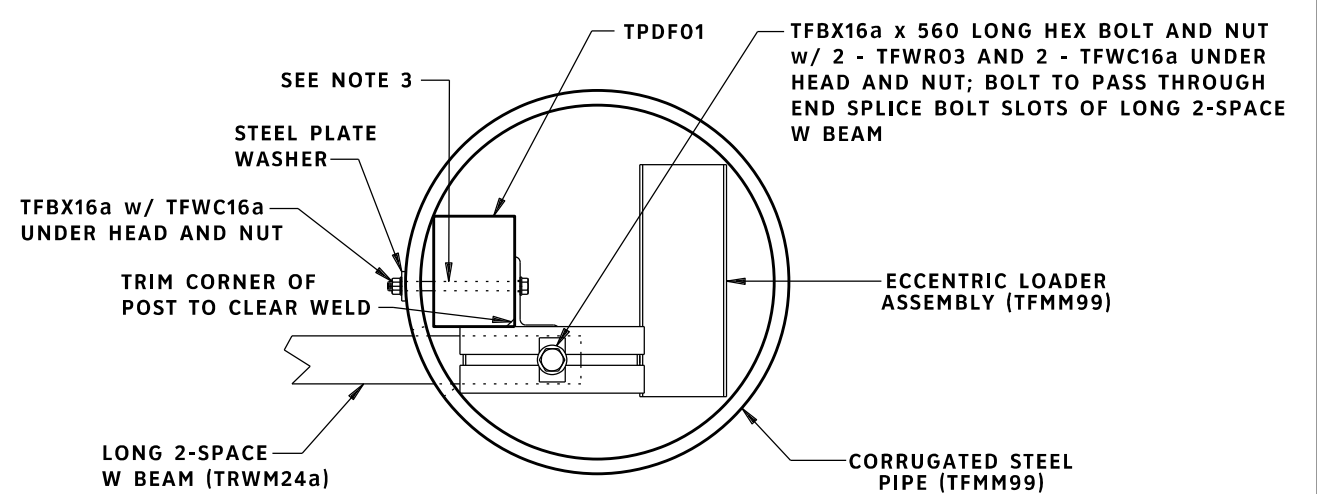
SHEET NO	1 OF 2
DATE:	2012 - 05
DRAWN:	D.C.
TSEW12	



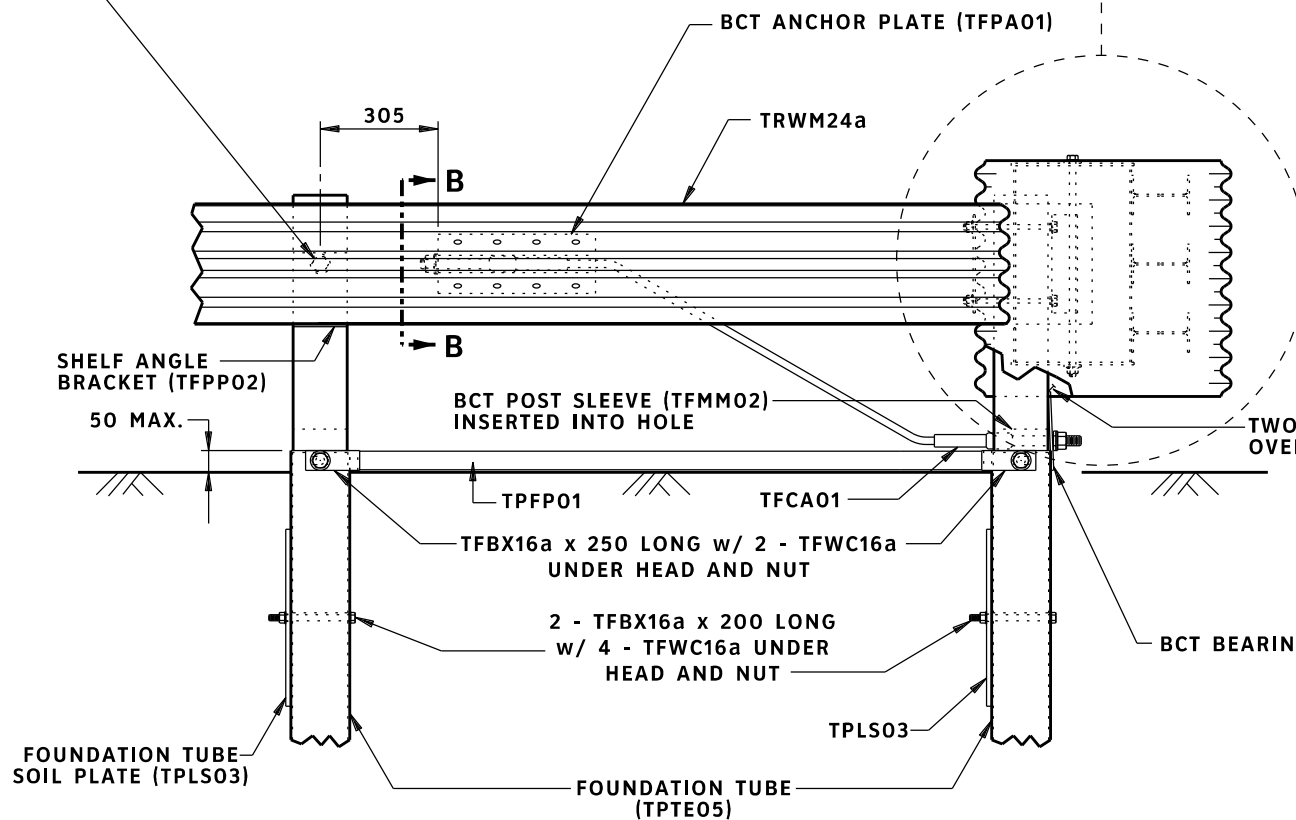
PLAN - NOSE ASSEMBLY

ASSEMBLE TFPPO2, TPDB01 AND TPDF01
USING 1 - TFBB04 c/w TFWC16a UNDER NUT
(BOLT DOES NOT GO THROUGH LONG 2-SPACE W BEAM)

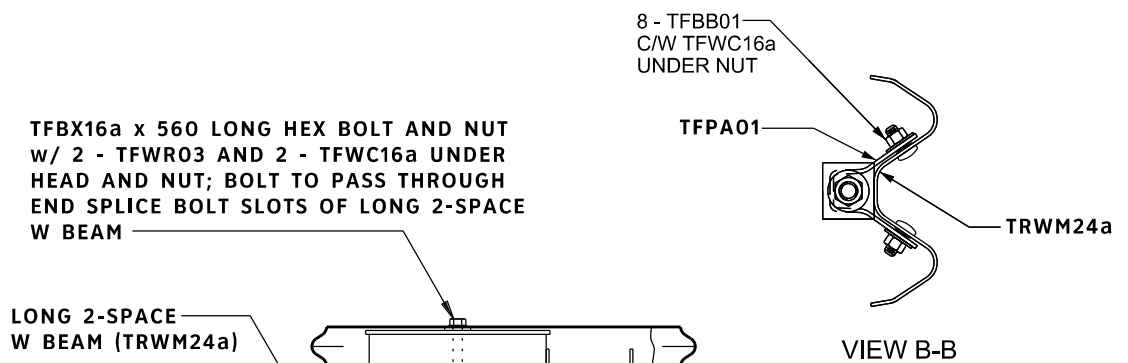
SEE NOSE DETAILS



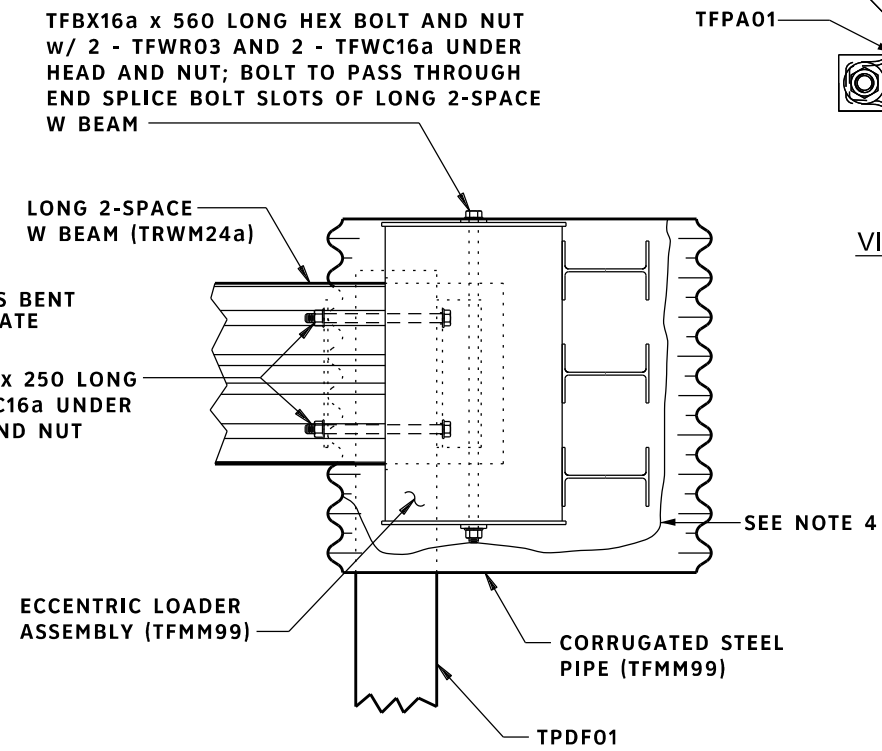
TOP VIEW



ELEVATION - NOSE ASSEMBLY



VIEW B-B



**SIDE VIEW
NOSE DETAILS**

NOTES:

1. ALL SCALES ARE APPROXIMATE
2. (NOTE DELETED)
3. HOLES IN POST 1 TO BE FIELD LOCATED AND DRILLED 2 mm LARGER THAN BOLT.
4. WALL OF CORRUGATED PIPE 'REMOVED' FOR CLARITY.
5. ADJUSTMENT OF THE YOKE(S) MAY BE REQUIRED IN THE FIELD TO ACCOMMODATE ASSEMBLY.

REVISIONS		
DATE	DESCRIPTION	BY
2012-07	CORRECTED PARTS NUMBERED	HPL
2012/11	REVISED PART	HPL
2012/12	DELETE SHEET 3 REVISED LABELS	HPL
2014/02	REVISED BOLT	S.S.

Manitoba
Infrastructure and
Transportation
TRAFFIC ENGINEERING



ECCENTRIC LOADER
BREAKAWAY CABLE
TERMINAL (ELT)

SHEET NO	2 OF 2
DATE:	2012 - 05
DRAWN:	D.C.

TSEW12