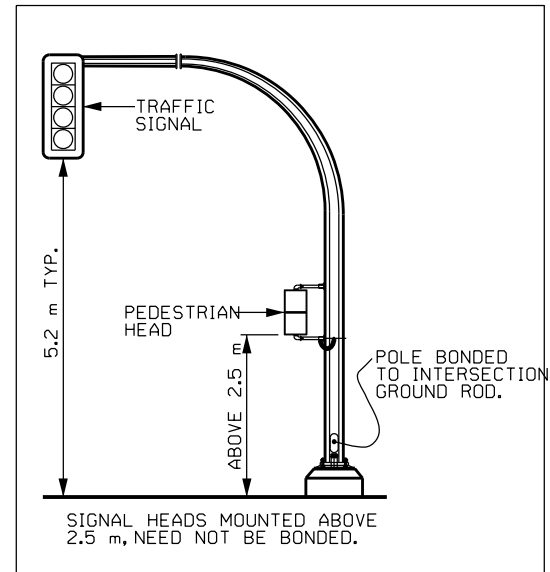
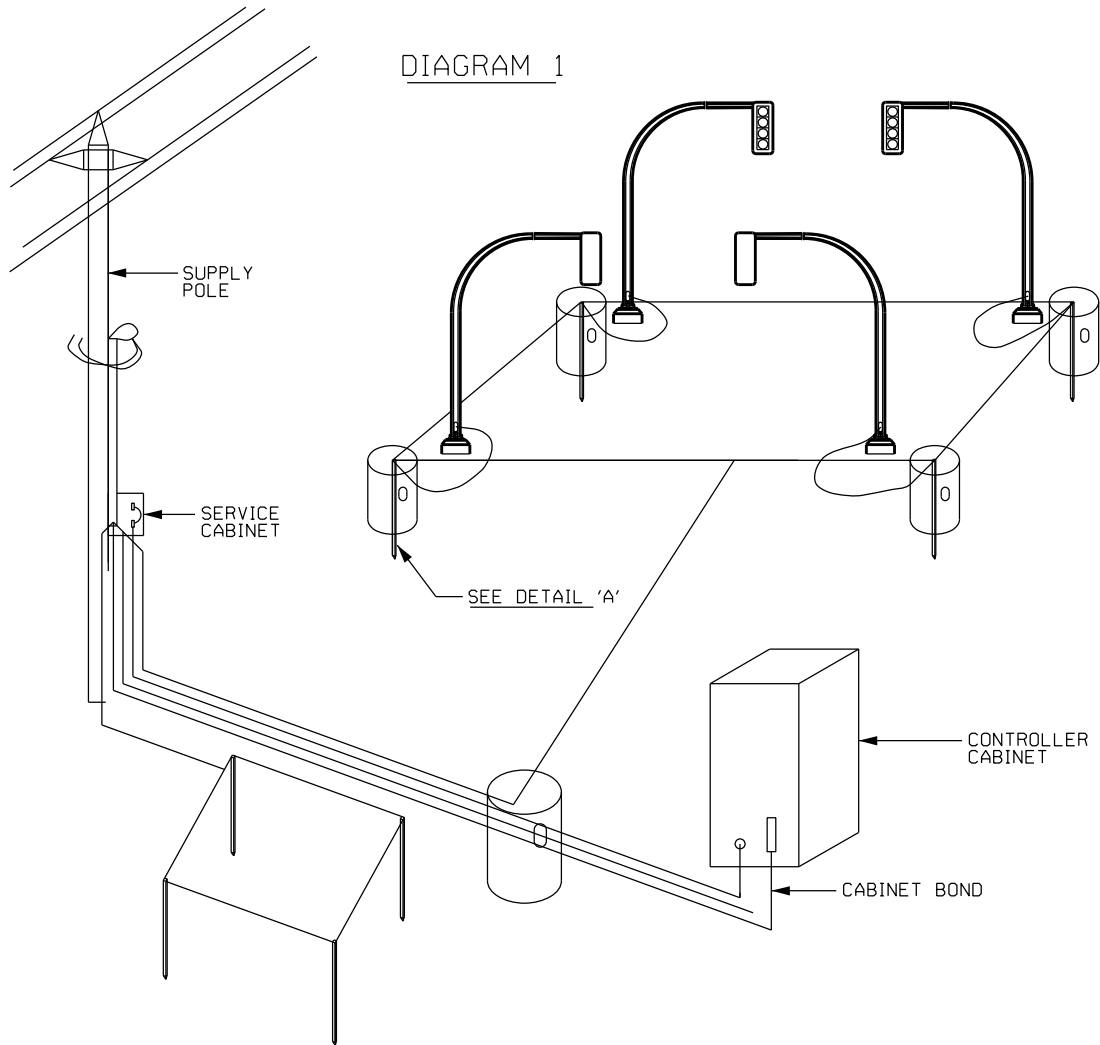


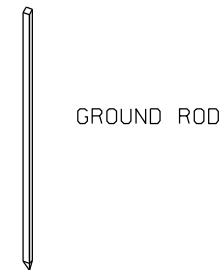
DIAGRAM 1




NOTES:

1. THE ONTARIO ELECTRIC SAFETY CODE REQUIRES A MINIMUM OF TWO GROUND RODS TO BE INSTALLED AT THE SERVICE ENTRANCE SWITCH; ANY ADDITIONAL GROUND ELECTRODES WOULD EXCEED THAT MINIMUM REQUIREMENT, AS IN DIAGRAM 1.
2. PEDESTRIAN PUSH BUTTONS INSTALLED BELOW 2.5 m IN A METALLIC BOX ARE NOT REQUIRED TO BE BONDED IF SUPPLIED FROM A CLASS II POWER SOURCE AS DEFINED IN RULE 16-200.
3. BOND CONDUCTORS INSTALLED IN RACEWAYS SHALL BE INSULATED, IF THE RACEWAY EXCEEDS TWO QUARTER BENDS OR FIFTEEN METERS IN LENGTH.

DETAIL A



REVISIONS	DESCRIPTION	BY	DATE

Manitoba 
 Infrastructure and
 Transportation
 TRAFFIC ENGINEERING

GROUNDING FOR TRAFFIC
 SIGNAL SYSTEMS

ORIGINAL
 APPROVED BY: LUCIEN GAGNON

SCALE:	N.T.S.
DATE:	06-2005
PREP. BY:	H.A.E.
E-014a	