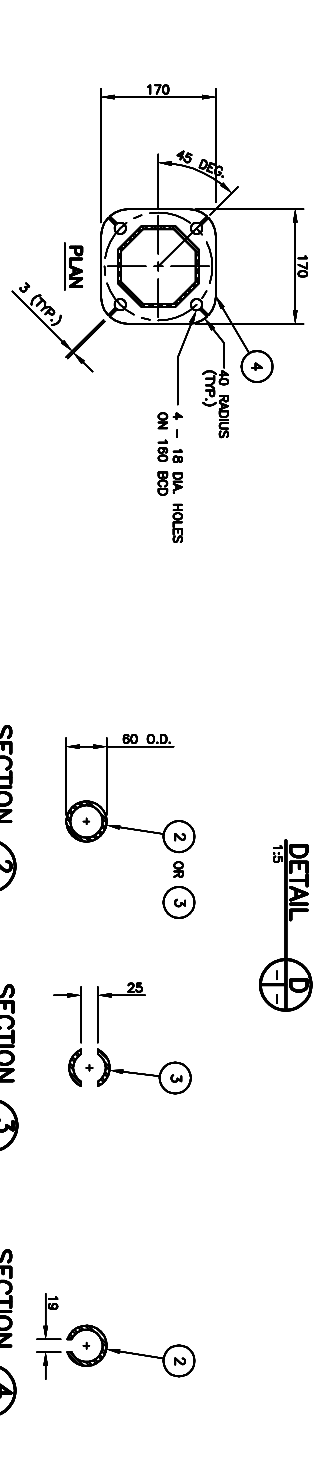
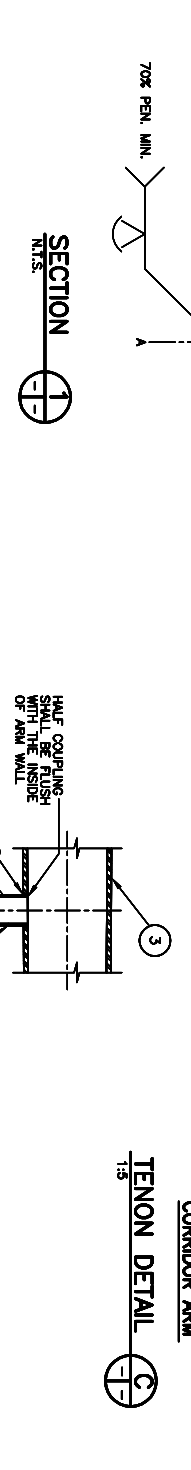
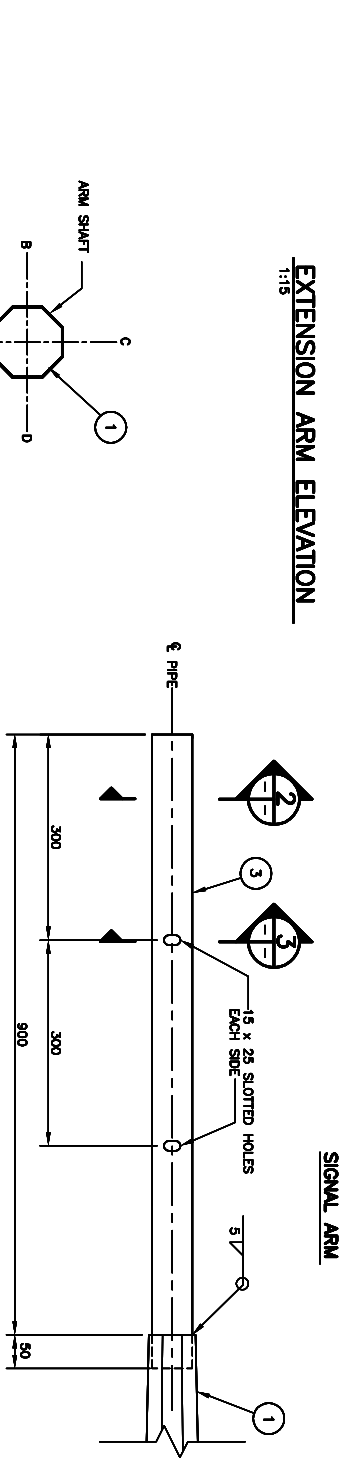
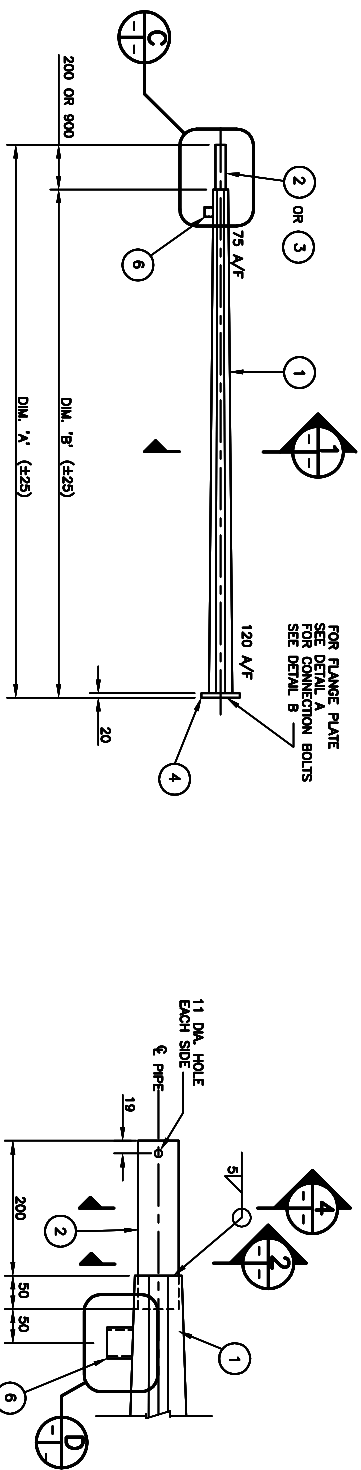


**BILL OF MATERIALS**

LINE NO.	QTY.	DESCRIPTION	SIZE	MATERIAL (G40.21-M-300W U/N)	REMARKS
1		2.5 m LONG EXTENSION ARM - CORRIDOR (#40373)			
2	1	OCTAGONAL SECTION SHAFT	120 A/F-75 A/F x 4,763		CORR. ARM 1600 LONG
3	1	TENON PIPE	60.3 O.D. x 3.91 x 950	SCH. 40, A53 GR. B	FOR CORRIDOR ARM ONLY SEE TENON DETAIL C
4	1	FLANGE PLATE	20 x 170 x 170		
5	4	FLANGE BOLTS	16 DIA. x 75	A325	SEE FLANGE BOLT DETAIL B
6					
7		2.5 m LONG EXTENSION ARM - SIGNAL ARM (#17910)			
8	1	OCTAGONAL SECTION SHAFT	120 A/F-75 A/F x 4,763		SIGNAL ARM 2300 LONG
9	1	TENON PIPE	60.3 O.D. x 3.91 x 290	SCH. 40, A53 GR. B	FOR SIGNAL ARM ONLY SEE TENON DETAIL C
10	1	FLANGE PLATE	20 x 170 x 170		
11	4	FLANGE BOLTS	16 DIA. x 75	A325	SEE FLANGE BOLT DETAIL B
12	1	HALF COUPLING	46.0 O.D. x 3.40 x 44	ASTM A105 - 3000 lb	SEE DETAIL D RE-TAP AFTER GALVANIZING
13	1	TENON CAP			SEE SHEET NO. S15
14					
15					
16					
17					
18					
19					
20					

- NOTES:**
- MATERIALS, EXCEPT STAINLESS STEEL ITEMS, SHALL BE ALL HOT DIP GALVANIZED IN ACCORDANCE WITH ASTM A123-09 (PLUS LATEST REVISIONS) WITH NET RETENTION OF 510 g/m<sup>2</sup>
  - PROVIDE 'RAISED' STOCK CODE NUMBER WITH WELDING ELECTRODE.
  - SHIP WITH BOLTS C/W NUTS AND WASHERS IN FLANGE.
  - PROVIDE 'RAISED' 'T' ON TOP OF ARM NEAR FLANGE PLATE USING WELDING ELECTRODE.
  - GRIND ALL SHARP POINTS AND EDGES.
  - TO BE USED WITH LIGHT SERIES DART STUB (E-16 F).

STOCK CODE	DESCRIPTION	DIM. 'A'	DIM. 'B'
40373	2.5m CORRIDOR ARM	2500	1800
17910	2.5m SIGNAL ARM	2500	2300



**ARM FLANGE PLATE DETAIL**  
SCALE: 1:5

**FLANGE BOLT DETAIL**  
SCALE: 1:5

**APEGIN**  
Certificate of Authorization  
Dillon Consulting Limited (MS)  
No. 1789 Date: 04/03/2012

**DILLON CONSULTING**  
CONSULTANT PROJECT NO. 11-5296

PROVINCE OF MANITOBA  
REGISTERED PROFESSIONAL ENGINEER  
S.S. RIHAL  
04/03/2012

**Manitoba**  
Infrastructure and Transportation  
Traffic Engineering

RELEASED FOR CONSTRUCTION  
BY: \_\_\_\_\_  
DIRECTOR TRAFFIC ENGINEERING  
SCALE: AS SHOWN  
COMPONENT NO. E-018.G  
DATE: \_\_\_\_\_  
SHEET NO. S5

DATE	BY	DESCRIPTION