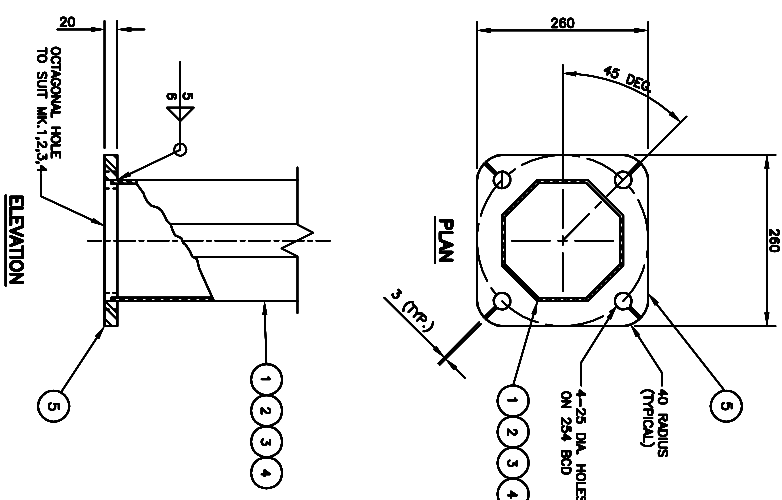


BILL OF MATERIALS

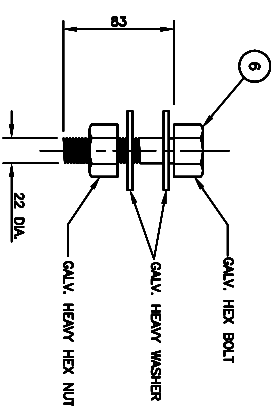
LINE NO.	QTY.	DESCRIPTION	SIZE	MATERIAL (G40.21-M-300W U/N)	REMARKS
1	1	1.5 m STRAIGHT STUB EXTENSION (#17899)			
2	1	OCTAGONAL SECTION SHWFT	180 A/F x 4,783		
3	1	FLANGE PLATE	20 x 280 x 280		
4	4	FLANGE BOLTS	22 DIA. x 83	ASTM A325	SEE FLANGE BOLT DETAIL B
5					
6		3.0 m STRAIGHT STUB EXTENSION (#17919)			
7	1	OCTAGONAL SECTION SHWFT	180 A/F x 4,783		
8	1	FLANGE PLATE	20 x 280 x 280		
9	4	FLANGE BOLTS	22 DIA. x 83	ASTM A325	SEE FLANGE BOLT DETAIL B
10					
11		4.5 m STRAIGHT STUB EXTENSION (#17920)			
12	1	OCTAGONAL SECTION SHWFT	180 A/F x 4,783		
13	1	FLANGE PLATE	20 x 280 x 280		
14	4	FLANGE BOLTS	22 DIA. x 83	ASTM A325	SEE FLANGE BOLT DETAIL B
15					
16		6.1 m STRAIGHT STUB EXTENSION (#17921)			
17	1	OCTAGONAL SECTION SHWFT	180 A/F x 4,783		
18	1	FLANGE PLATE	20 x 280 x 280		
19	4	FLANGE BOLTS	22 DIA. x 83	ASTM A325	SEE FLANGE BOLT DETAIL B
20					

NOTES:

1. MATERIALS, EXCEPT STAINLESS STEEL ITEMS, SHALL BE ALL HOT DIP GALVANIZED IN ACCORDANCE WITH ASTM A123-09 (PLUS LATEST REVISIONS) WITH NET RETENTION OF 0.10 g/m²
2. PROVIDE 'PASS' STOCK CODE NUMBER WITH WELDING ELECTRODE.
3. SHIP WITH BOLTS C/W NUTS AND WASHERS IN FLANGE (ONE FLANGE ONLY).
4. GRIND ALL SHARP POINTS AND EDGES.
5. TO BE USED WITH:
 - * MEDIUM SERIES COMBINATION CANTILEVER VERTICAL SHWFT (E-16 H)
 - * HEAVY SERIES COMBINATION CANTILEVER VERTICAL SHWFT (E-18 W)

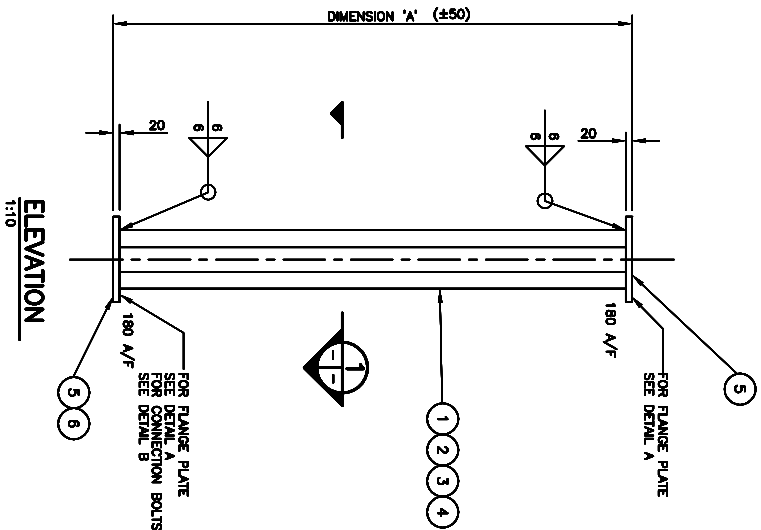


13 STUB FLANGE PLATE DETAIL (A)
(BOTTOM FLANGE PLATE SHOWN)

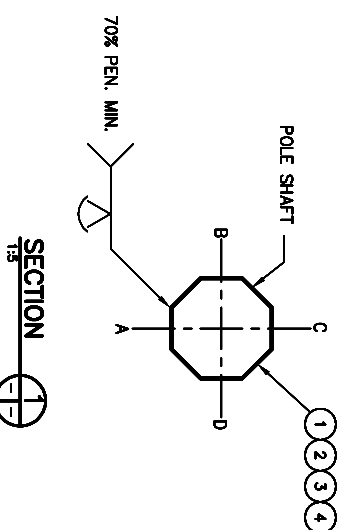


12 FLANGE BOLT DETAIL (B)

STOCK CODE	DIMENSION 'A'
17899	1500
17819	3000
17820	4500
17821	6100



ELEVATION
1:10



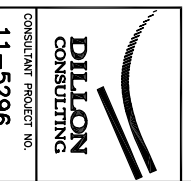
SECTION
1:5

TRAFFIC SIGNAL AND PEDESTRIAN
CORRIDOR STRUCTURES
STRAIGHT STUB EXTENSIONS
1.5 m, 3.0 m, 4.5 m, AND 6.1 m

DATE	BY	DESCRIPTION



RELEASED FOR CONSTRUCTION
BT:
DIRECTOR TRAFFIC ENGINEERING
SCALE: AS SHOWN
DATE: E-018.D
COMPONENT NO.
SHEET No. 516



DILLON CONSULTING
CONSULTANT PROJECT NO. 11-5296



Certificate of Authorization
Dillon Consulting Limited (MB)
No. 1789 Date: 04/03/2012

REDUCED DRAWING
N.T.S.