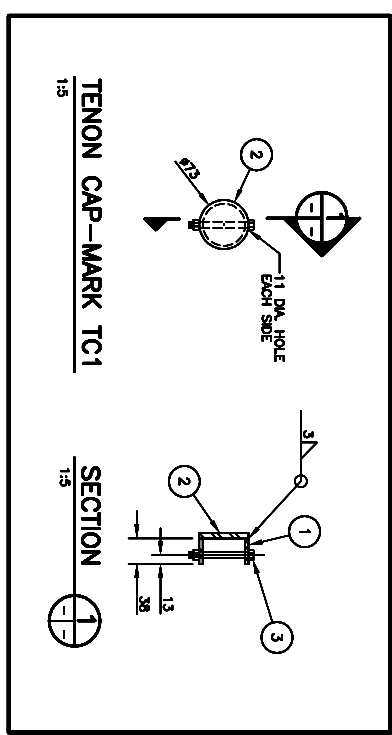
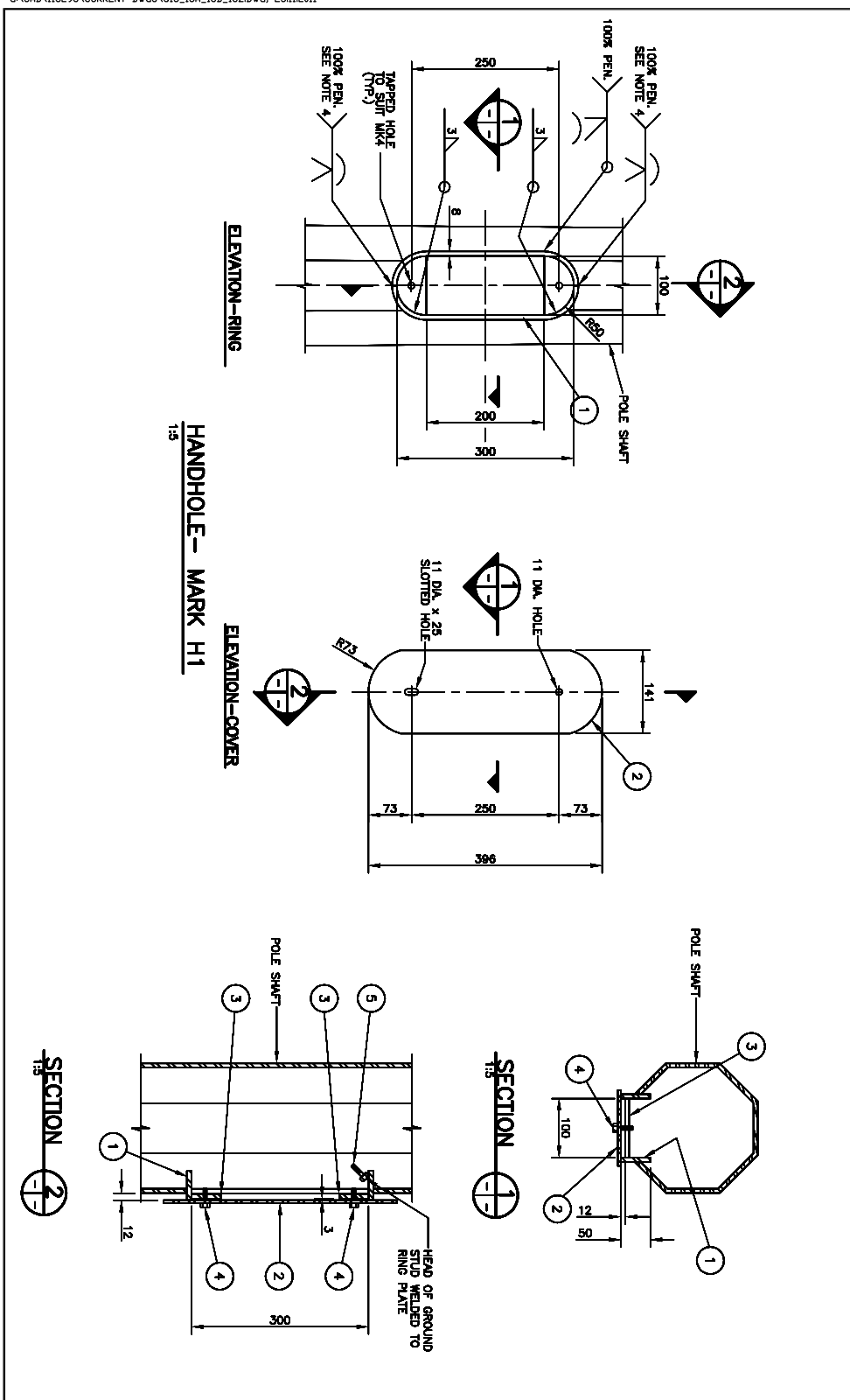
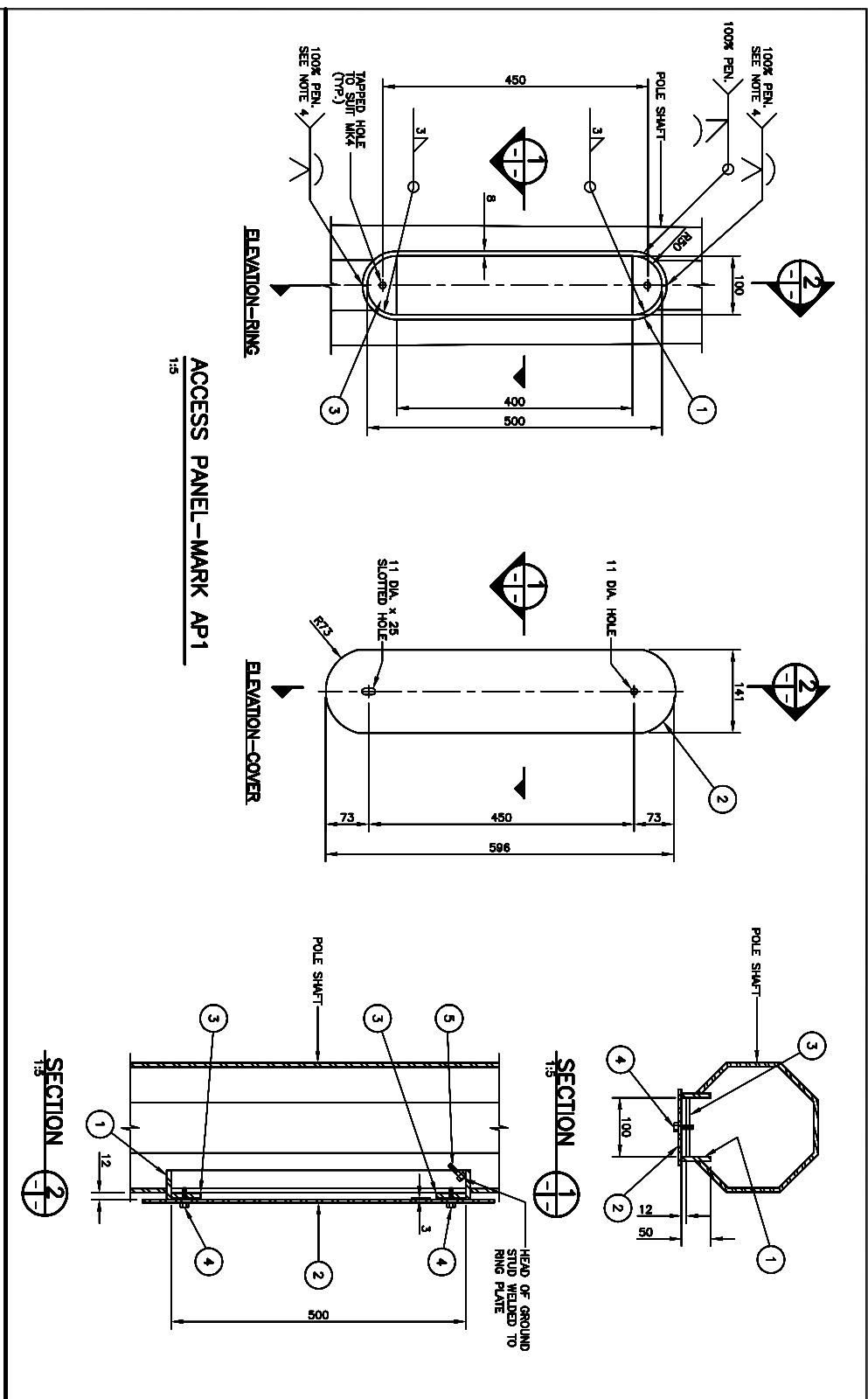


BILL OF MATERIALS

LINE NO.	QTY.	DESCRIPTION	SIZE	MATERIAL (C40,21-M-300W U/N)	REMARKS
1	1	ACCESS PANEL MARK AP1			
2	1	RING PLATE	8 x 50 x 895		TAP AFTER GALVANIZED
3	1	COVER PLATE	11 GA. x 141 x 596		TAP AFTER GALVANIZED
4	2	BACKING PLATE	6 x 50 x 100		TAP AFTER GALVANIZED
5	2	HEX BOLT	6 DIA. x 19	ASTM 276, TYPE 316 S/S	C/W OVERSIZE FLAT WASHER
6	1	GROUND STUD ASSEMBLY	10 DIA. x 40		C/W 2-10 DIA. HEX NUT 2-TERMINAL WASHER & 1-LOCKWASHER
7					
8		HANDHOLE MARK H1			
9	1	RING PLATE	8 x 50 x 545		TAP AFTER GALVANIZED
10	1	COVER PLATE	11 GA. x 141 x 396		TAP AFTER GALVANIZED
11	2	BACKING PLATE	6 x 50 x 100		TAP AFTER GALVANIZED
12	2	HEX BOLT	6 DIA. x 19	ASTM 276, TYPE 316 S/S	C/W OVERSIZE FLAT WASHER
13	1	GROUND STUD ASSEMBLY	10 DIA. x 40		C/W 2-10 DIA. HEX NUT 2-TERMINAL WASHER & 1-LOCKWASHER
14					
15		TENON CAP MARK TC1			
16	1	PIPE	73 O.D. x 5.16 x 36	SCH. 40, ASTM A53 GR. B	
17	1	CAP PLATE	73 DIA. x 6		
18	3	HEX BOLT	10 DIA. x 99	ASTM 276, TYPE 316 S/S	C/W NUT/ON NUT
19					
20					

- NOTE:**
- ALL MATERIALS, EXCEPT STAINLESS STEEL ITEMS, SHALL BE HOT DIP GALVANIZED IN ACCORDANCE WITH ASTM A123-09 (PLUS LATEST REVISIONS) WITH NET RETENTION OF 610 g/m²
 - RE-TAP THREADED HOLES AND GROUND STUD AFTER HOT-DIP GALVANIZING.
 - GRIND ALL SHARP POINTS AND EDGES.
 - RING PLATE MAY BE FABRICATED FROM ONE OR TWO PIECES CONNECTED TOP AND/OR BOTTOM BY COMPLETE PENETRATION WELD.



REDUCED DRAWING
N.T.S.

APEGIN
Certificate of Authorization
Dillon Consulting Limited (MB)
No. 4789 Date: 04/03/2012

TRAFFIC SIGNAL AND PEDESTRIAN CORRIDOR STRUCTURES

DETAILS
ACCESS PANEL (AP1)
HANDHOLE (H1)
TENON CAP (TC1)

RELEASED FOR CONSTRUCTION
BT:

DATE	BY	DESCRIPTION

DILLON CONSULTING
CONSULTANT PROJECT NO. 11-5296

PROVINCE OF MANITOBA
REGISTERED PROFESSIONAL ENGINEER
S.S. RIHAL
04/03/2012

Manitoba
Infrastructure and Transportation
Traffic Engineering

DESIGN: BT, CSR
CHECKED: JGW
SCALE: AS SHOWN
DATE: E-016 A, B & Z
SHEET NO. S15