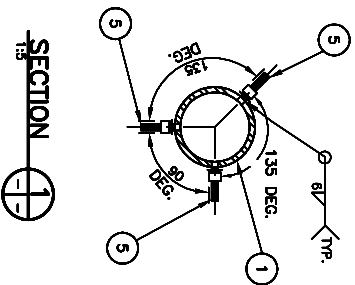
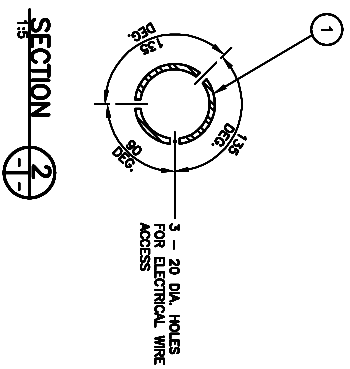
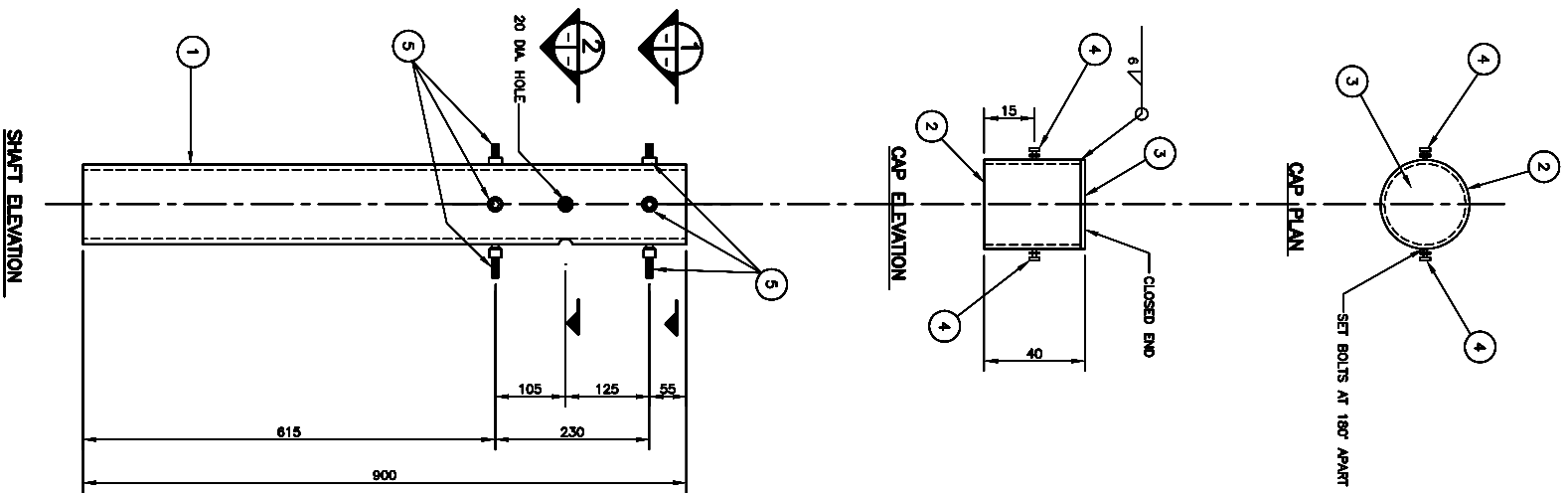


LUMINAIRE ADAPTOR

1:5



BILL OF MATERIALS

LINE NO.	QTY. REQ'D.	DESCRIPTION	SIZE	MATERIAL (G40.21-M-300W U/N)	REMARKS
1	1	HYDRO LUMINAIRE ADAPTOR			
2	1	LUMINAIRE ADAPTOR	119 O.D. x 6.35 x 900		
3	1	CAP	132 O.D. x 4.763 x 38		
4	1	CAP COVER PLATE	6 x 136 DIA.		
5	2	BOLT	6 DIA. x 15	TYPE 316 S/S	C/W LOCKWASHER & LOCKWASHER EACH BOLT
6	6	THREADED ROD	16 DIA. x 50	G40.21-M-300W	C/W 1-NUT & 1-LOCKWASHER EACH ROD
7					
8					
9					
10					

- NOTE:**
- ALL MATERIALS, EXCEPT STAINLESS STEEL ITEMS, SHALL BE HOT DIP GALVANIZED IN ACCORDANCE WITH ASTM A123-09 (PLUS LATEST REVISIONS) WITH NET RETENTION OF 610 g/m²
 - ROUND ALL SHARP POINTS AND EDGES.
 - TO BE USED WITH 8.4 m AND 8.4 m LUMINAIRE EXTENSION SHWFTS (E-016 L).

DATE	BY	DESCRIPTION

TRAFFIC SIGNAL AND PEDESTRIAN
CORRIDOR STRUCTURES
HYDRO LUMINAIRE ADAPTOR



Manitoba
Infrastructure and Transportation

DILLON CONSULTING
CONSULTANT PROJECT NO. 11-5296

APEGM
Certificate of Authorization
Dillon Consulting Limited (MB)
No. 1789 Date: 04/03/2012

REDUCED DRAWING
N.T.S.

DESIGN: _____
CHECKED: SSR
DATE: _____

BR: _____
CDM: _____
SCALE: AS SHOWN

RELEASED FOR CONSTRUCTION
BY: _____
DATE: _____

CHECKED: SSR
SHEET No. S14