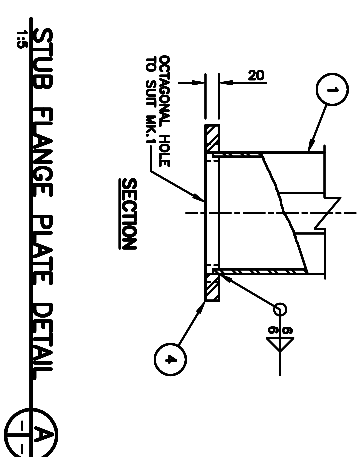
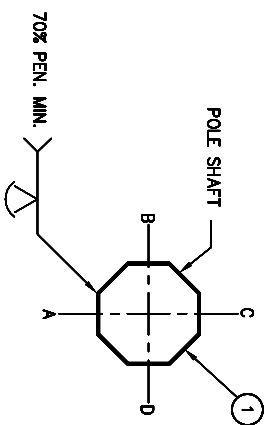
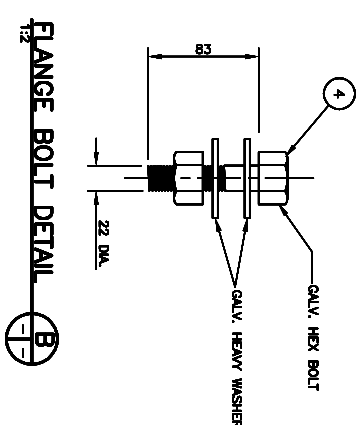
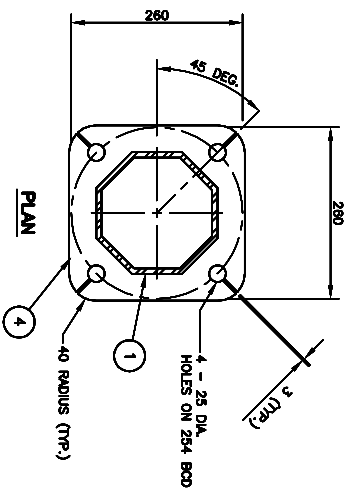
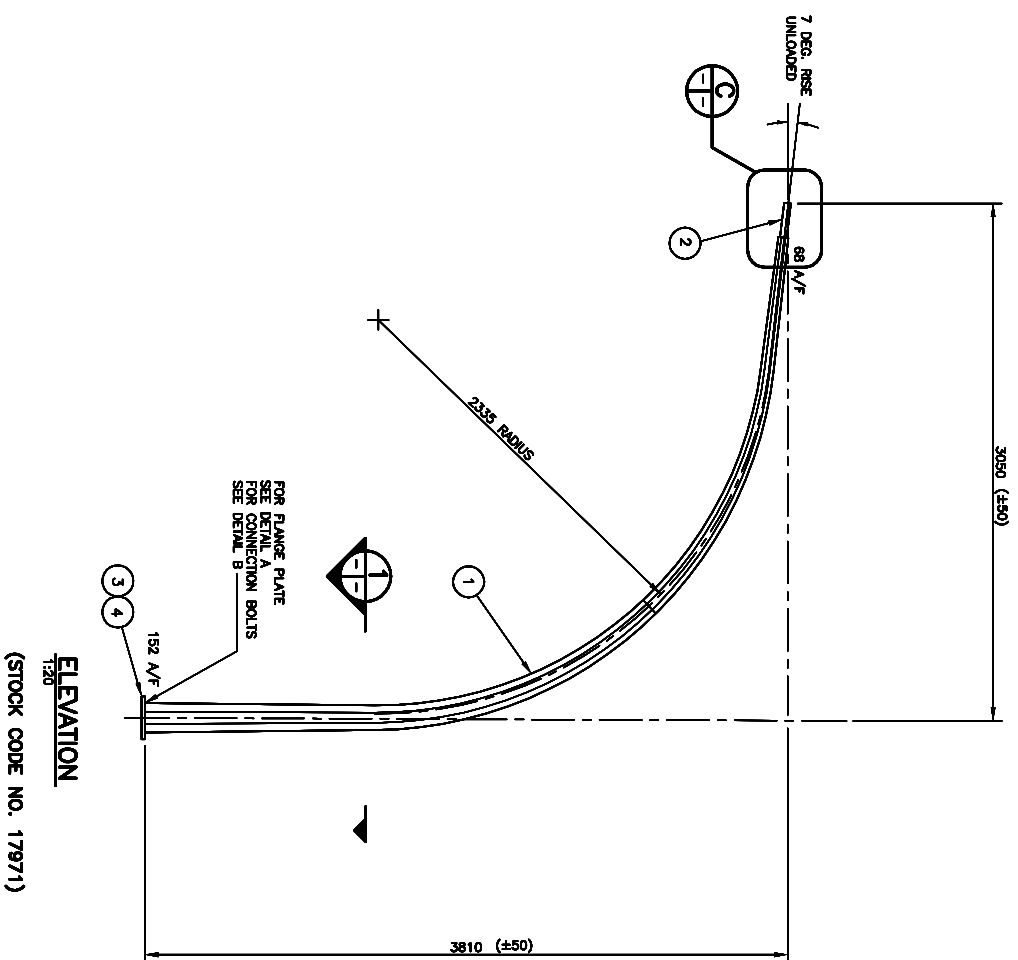
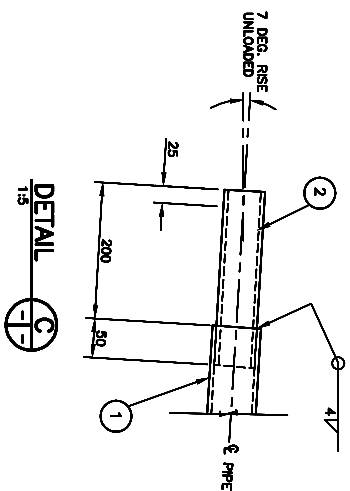


BILL OF MATERIALS					
LINE NO.	QTY.	DESCRIPTION	SIZE	MATERIAL (G40.21-M-300W U/N)	REMARKS
1	1	LUMINAIRE DAVIT ARM (#17971)			
2	1	OCTAGONAL SECTION SHAFT	152 A/F-68 A/F x 3.038		
3	1	TENSION PIPE	60.3 O.D. x 3.91 x 250	SCH. 40, ASTM A53 GR. B	
4	1	FLANGE PLATE	20 x 280 x 280		
5	4	FLANGE BOLTS	22 DIA. x 83	ASTM A325	SEE FLANGE BOLT DETAIL B
6					
7					
8					
9					
10					

- NOTES:**
1. ALL MATERIALS, EXCEPT STAINLESS STEEL ITEMS, SHALL BE HOT DIP GALVANIZED IN ACCORDANCE WITH ASTM A123-09 (PLUS LATEST REVISIONS) WITH NET RETENTION OF 810 g/m²
 2. PROVIDE 'RAISED' STOCK CODE NUMBER WITH WELDING ELECTRODE.
 3. SHIP WITH BOLTS C/W NUTS AND WASHERS IN FLANGE.
 4. GRIND ALL SHARP POINTS AND EDGES.
 5. TO BE USED WITH:
 - MEDIUM SERIES COMBINATION CANTILEVER VERTICAL SHAFT (E-16 H)
 - HEAVY SERIES COMBINATION CANTILEVER VERTICAL SHAFT (E-16 W)



SECTION 1:5

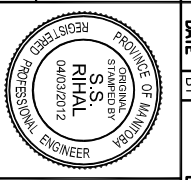
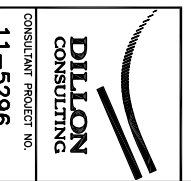
STUB FLANGE PLATE DETAIL 1:5

DATE	BY	DESCRIPTION

TRAFFIC SIGNAL AND PEDESTRIAN CORRIDOR STRUCTURES
LUMINAIRE DAVIT ARM



REDUCED DRAWING
N.T.S.



DESIGN	BY: _____	CDM	RELEASED FOR CONSTRUCTION
CHECKED	BY: _____	SSR	DATE: _____
DETAILS	BY: _____	JGW	SCALE: AS SHOWN
CHECKED	BY: _____	SSR	COMPONENT NO. E-018 E.
			SHEET No. S12