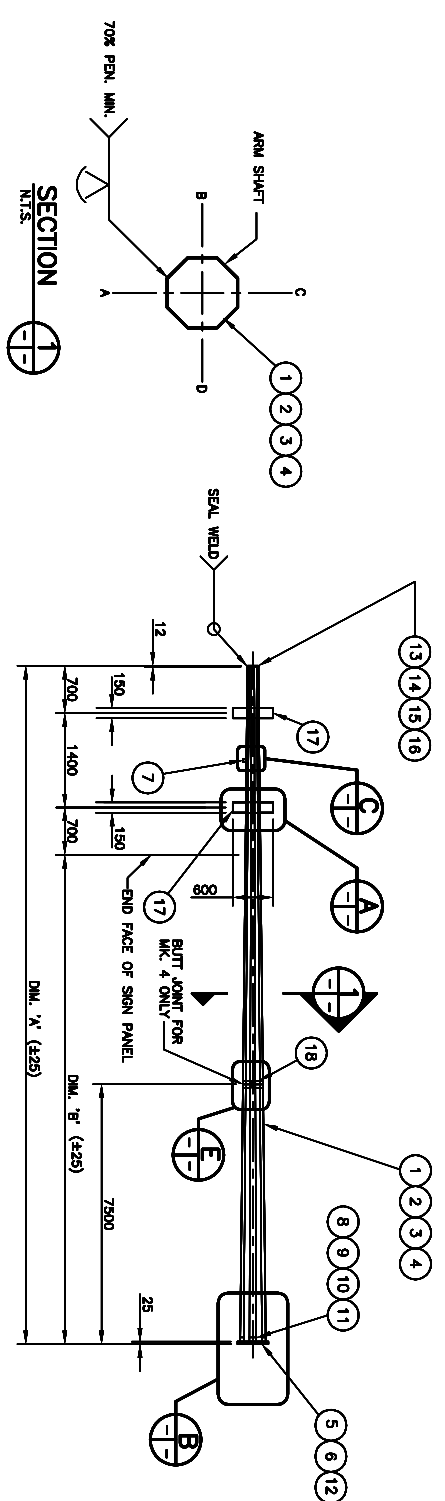


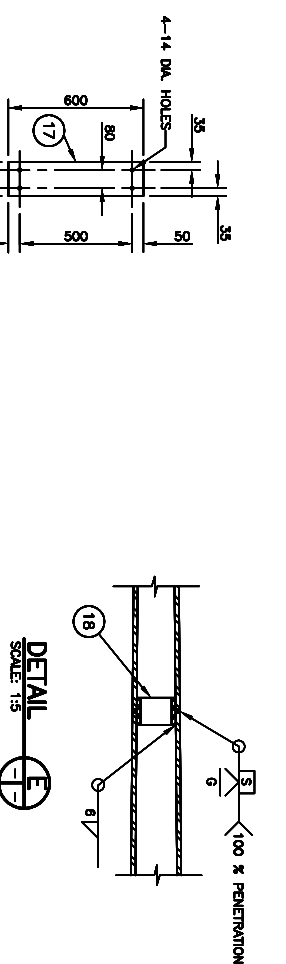
**BILL OF MATERIALS**

LINE NO.	QTY.	DESCRIPTION	SIZE	MATERIAL (G40.21-M-300W U/N)	REMARKS
1	1	7.5 m ADVANCE SIGNAL ARM (#58528)			
2	1	OCTAGONAL SECTION SHAFT	320 A/F--100 A/F x 6.350		
3	1	FLANGE PLATE	25 x 457 x 610	ASTM A325	SEE FLANGE BOLT DETAIL D
4	8	FLANGE BOLTS	25 DIA. x 100	ASTM A105 - 3000 lb	SEE DETAIL C RE-TAP AFTER GALVANIZING
5	1	HALF COUPLING	46.0 O.D. x 3.40 x 44		
6	1	BACK-UP STRIP PLATE	6 x 40		
7	1	CAP PLATE	12 x 140 DIA.		
8	1	SIGN MOUNTING PLATE	6 x 150 x 800		
9	2	9.0 m ADVANCE SIGNAL ARM (#58529)			
10	1	OCTAGONAL SECTION SHAFT	350 A/F--125 A/F x 6.350		
11	1	FLANGE PLATE	25 x 457 x 610	ASTM A325	SEE FLANGE BOLT DETAIL D
12	8	FLANGE BOLTS	25 DIA. x 100	ASTM A105 - 3000 lb	SEE DETAIL C RE-TAP AFTER GALVANIZING
13	1	HALF COUPLING	46.0 O.D. x 3.40 x 44		
14	1	BACK-UP STRIP PLATE	6 x 40		
15	1	CAP PLATE	12 x 170 DIA.		
16	1	SIGN MOUNTING PLATE	6 x 150 x 800		
17	2	10.5 m ADVANCE SIGNAL ARM (#58530)			
18	1	OCTAGONAL SECTION SHAFT	380 A/F--125 A/F x 6.350		
19	1	FLANGE PLATE	25 x 457 x 610	ASTM A325	SEE FLANGE BOLT DETAIL D
20	1	FLANGE BOLTS	25 DIA. x 100	ASTM A105 - 3000 lb	SEE DETAIL C RE-TAP AFTER GALVANIZING
21	8	FLANGE BOLTS	25 DIA. x 100		
22	1	HALF COUPLING	46.0 O.D. x 3.40 x 44		
23	1	BACK-UP STRIP PLATE	6 x 40		
24	1	CAP PLATE	12 x 170 DIA.		
25	1	SIGN MOUNTING PLATE	6 x 150 x 800		
26	2	15.0 m ADVANCE SIGNAL ARM (#58531)			
27	1	OCTAGONAL SECTION SHAFT	430 A/F--150 A/F x 7.928		
28	1	FLANGE BOLTS	25 DIA. x 100	ASTM A325	SEE FLANGE BOLT DETAIL D
29	12	HALF COUPLING	46.0 O.D. x 3.40 x 44	ASTM A105 - 3000 lb	SEE DETAIL C RE-TAP AFTER GALVANIZING
30	1	BACK-UP STRIP PLATE	6 x 40		
31	1	FLANGE PLATE	25 x 801 x 610		
32	1	CAP PLATE	12 x 170 DIA.		
33	1	SIGN MOUNTING PLATE	6 x 150 x 800		
34	1				
35	2				
36					
37					

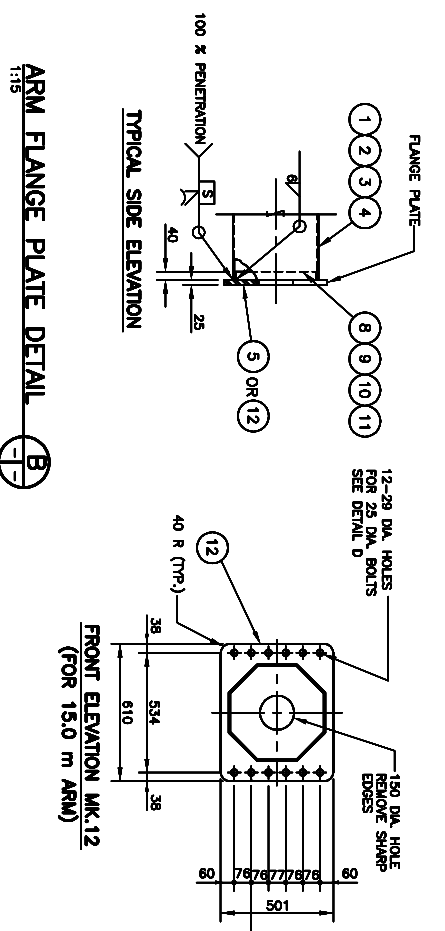
- NOTES:**
- ALL MATERIALS, EXCEPT STAINLESS STEEL ITEMS, SHALL BE HOT DIP GALVANIZED IN ACCORDANCE WITH ASTM A123-09 (PLUS LATEST REVISIONS) WITH NET RETENTION OF 610 g/m<sup>2</sup>
  - PROVIDE 'RAISED' STOCK CODE NUMBER WITH WELDING ELECTRODE.
  - PROVIDE 'RAISED' T ON TOP OF ARM NEAR FLANGE PLATE USING WELDING ELECTRODE.
  - SHIP WITH BOLTS C/W NUTS AND WASHERS IN FLANGE.
  - GRIND ALL SHARP POINTS AND EDGES.
  - TO BE USED WITH HEAVY SERIES COMBINATION CANTILEVER ADVANCE WARNING SIGN (E-016 W).



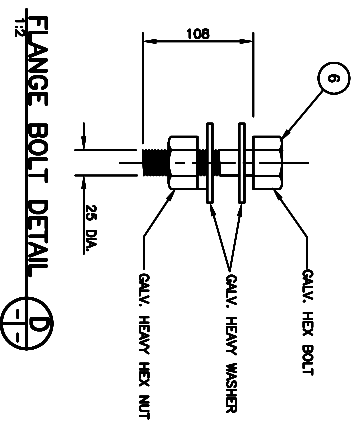
**EXTENSION ARM ELEVATION**  
SCALE: 1:30



STOCK CODE	DESCRIPTION	DIM. 'A'	DIM. 'B'
58528	7.5 m ADVANCE SIGNAL	7500	4700
58529	9.0 m ADVANCE SIGNAL	9000	6200
58530	10.5 m ADVANCE SIGNAL	10500	7700
58531	15.0 m ADVANCE SIGNAL	15000	12200
58524	VERTICAL SHAFT SEE COMPONENT NO. E-016 W, 99		SHAFT SHALL BE INTER-CHANGEABLE WITH TRAFFIC SIGNAL ARM & ADVANCE SIGNAL ARM



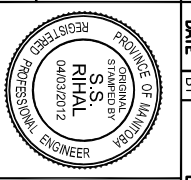
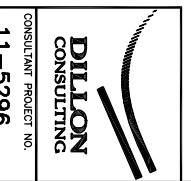
**ARM FLANGE PLATE DETAIL**  
SCALE: 1:15



**FLANGE BOLT DETAIL**  
SCALE: 1:2



**REDUCED DRAWING**  
N.T.S.



**Manitoba**  
Infrastructure and Transportation  
Traffic Engineering

**HEAVY SERIES COMBINATION CANTILEVER ADVANCE WARNING SIGN**

7.5 m, 9.0 m, 10.5 m, and 15.0 m ARMS

RELEASED FOR CONSTRUCTION

DATE: \_\_\_\_\_

DESIGN: \_\_\_\_\_

CHECKED: \_\_\_\_\_

BY: \_\_\_\_\_

SCALE: AS SHOWN

COMPONENT NO. E-016 R

CHECKER: \_\_\_\_\_

SHEET NO. S10