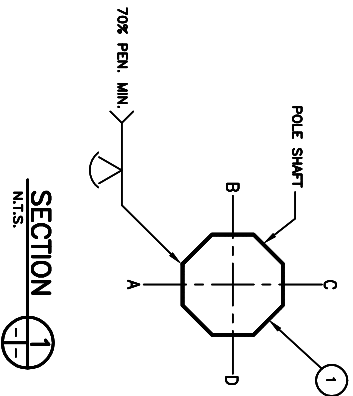
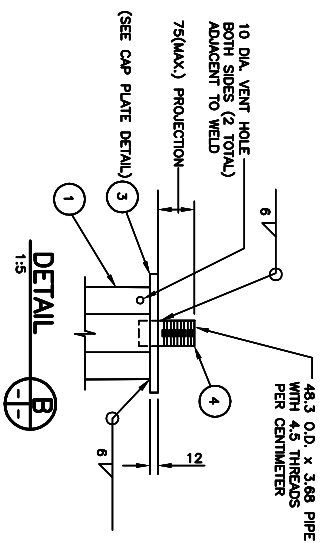


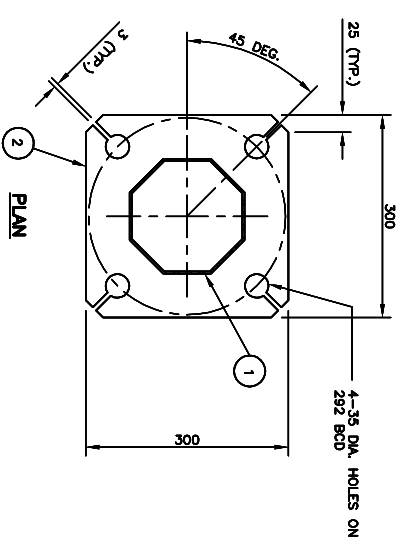
POLE ELEVATION
1:1.5
(STOCK CODE NO. - 17896)



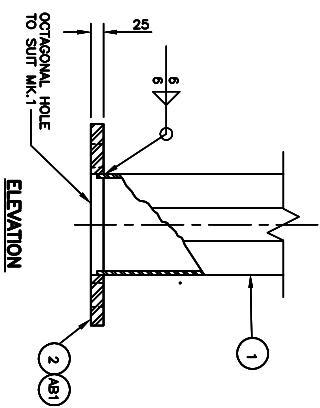
SECTION
N.T.S.



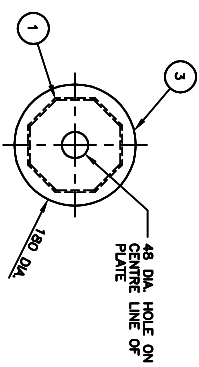
DETAIL
1:1.5



PLAN



ELEVATION



CAP PLATE DETAIL
1:1.5

- NOTES:**
1. ALL MATERIALS, EXCEPT STAINLESS STEEL ITEMS, SHALL BE HOT-DIP GALVANIZED IN ACCORDANCE WITH ASTM A123-09 (PLUS LATEST REVISIONS) WITH NET RETENTION OF 510 g/m².
 2. PROVIDE 'RAISED' STOCK CODE NUMBER WITH WELDING ELECTRODE.
 3. SHIP WITH HANDHOLE COVERS INSTALLED.
 4. STRUCTURE INSTALLED ON SAFE-T-BASE (BREAKAWAY BASE) WITH 4-25 DIA. GR. 87 BOLTS ON 292 BCD.
 5. GRIND ALL SHARP POINTS AND EDGES.
 6. RE-TAP THREADS AFTER HOT-DIP GALVANIZING.

BILL OF MATERIALS

LINE NO.	QTY.	DESCRIPTION	SIZE	MATERIAL (G40.21-M-300W U/N)	REMARKS
1	1	2.9 m STRAIGHT STANDARD (#17896)			
2	1	OCTAGONAL SECTION SHAFT	170 A/F-140 A/F x 3.038		
3	1	BASE PLATE	25 x 300 x 300	G40.21-M-300W	
4	1	CAP PLATE	12 x 180 #		
5	1	STRAIGHT PIPE	48.3 O.D. x 3.68 x 100 LONG	SCH. 40, ASTM A53 GR. B	SEE DETAIL B
6					
7	1	ACCESS PANEL			SEE SHEET NO. S15
8					
9	4	ANCHOR BOLT ASSEMBLY	29 DIA. x 1850	G40.21-M-300W	SUPPLIED BY OWNER SEE ANCHOR BOLT DWGS.
10					
11					
12					
13					
14					

REVISIONS

DATE	BY	DESCRIPTION

TRAFFIC SIGNAL STRUCTURE
LIGHT SERIES
2.9 m STRAIGHT STANDARD

RELEASED FOR CONSTRUCTION
BY: _____



DESIGN	CDM	DIRECTOR	DATE
CHECKED: SSR	SSR	TRAFFIC ENGINEERING	COMPONENT No.
BY: JGW	JGW	SCALE: AS SHOWN	E-018.C
CHECKED: SSR	SSR		SHEET No. S1



REDUCED DRAWING
N.T.S.

