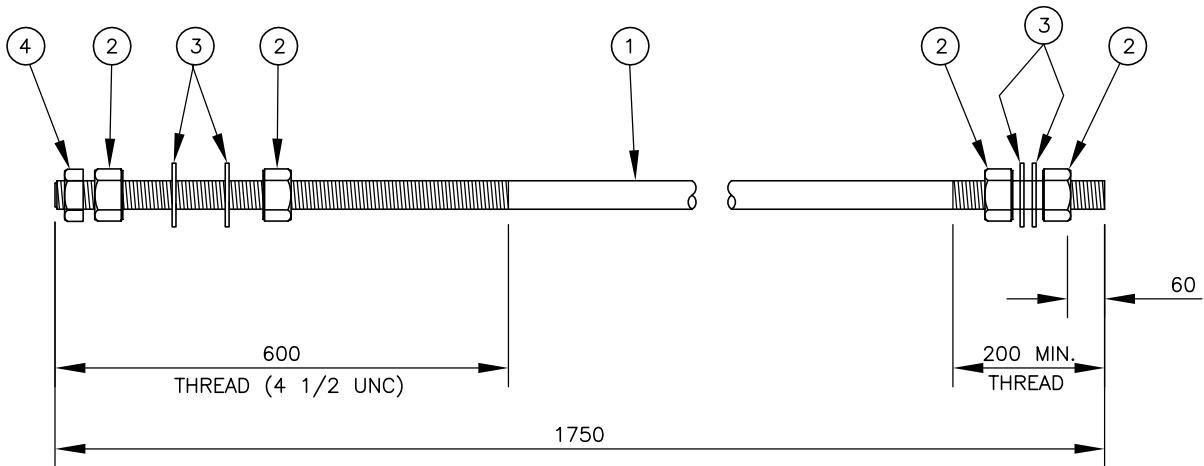


BILL OF MISCELLANEOUS METAL

MK. NO.	QTY. REQ'D.	DESCRIPTION	SIZE	MATERIAL
1	1	ANCHOR BOLT THREADED BOTH ENDS	51 (2") DIA. x 1750	AISI/SAE 4140 GALV. FULL LENGTH
2	4	HEAVY HEX NUT	51 (2") DIA.	ASTM A194 GRADE 2H
3	4	HEAVY WASHER	51 (2") DIA.	G40.21-M-300W
4	1	LOCK HEX NUT	51 (2") DIA.	ASTM A194 GRADE 2H



ANCHOR BOLT ASSEMBLY MK. AB3
(STOCK CODE NO. 7585)

NOTES:

1. ANCHOR BOLTS SHALL BE SOLID ROUNDS AISI/SAE 4140 STEEL IN THE ANNEALED CONDITION.
2. ALL PARTS OF ANCHOR BOLT ASSEMBLY SHALL BE HOT DIP GALVANIZED (FULL LENGTH) IN ACCORDANCE WITH ASTM A123-09 (PLUS LATEST REVISIONS) WITH NET RETENTION OF 610 g/m.²
3. ALL NUTS SHALL BE TAPPED OVERSIZE PRIOR TO GALVANIZING.
4. ALL NUTS AND WASHERS SHALL BE ASSEMBLED BY THE SUPPLIER PRIOR TO DELIVERY.
5. ANCHOR BOLTS AB3 TO BE USED WITH HEAVY SERIES FOUNDATION TYPE F5.



REVISIONS		
DATE	BY	DESCRIPTION

**TRAFFIC SIGNAL AND
PEDESTRIAN CORRIDOR
STRUCTURES**

**51 mm (2") DIA.
ANCHOR BOLT AB3**



DESIGN	BY: <u>CDW</u>
	CHECKED: <u>SSR</u>
DETAILS	BY: <u>JGW</u>
	CHECKED: <u>SSR</u>

RELEASED FOR CONSTRUCTION BY:	
DIRECTOR TRAFFIC ENGINEERING	DATE
SCALE: <u>NTS</u>	COMPONENT No. <u>AB3</u>
	SHEET No. <u>AB3</u>