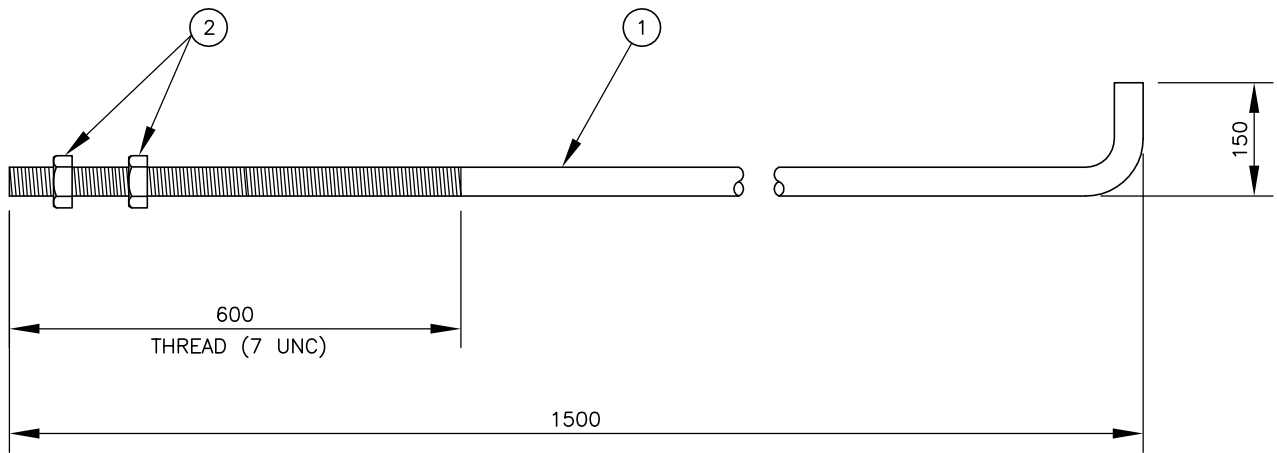


BILL OF MISCELLANEOUS METAL

MK. NO.	QTY. REQ'D.	DESCRIPTION	SIZE	
1	1	ANCHOR BOLT	29 (1 1/8") DIA. x 1650	G40.21-M-300W GALV. FULL LENGTH
2	2	HALF NUTS	29 (1 1/8") DIA.	ASTM A194 GRADE 2H



ANCHOR BOLT ASSEMBLY MK. AB1
(STOCK CODE NO. 7558)

NOTES:

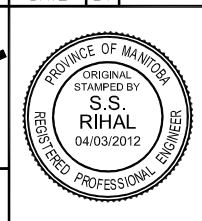
1. ANCHOR BOLTS SHALL BE SOLID ROUNDS G40.21-M-300W.
2. ALL PARTS OF ANCHOR BOLT ASSEMBLY SHALL BE HOT DIP GALVANIZED (FULL LENGTH) IN ACCORDANCE WITH ASTM A123-09 (PLUS LATEST REVISIONS) WITH NET RETENTION OF 610 g/m²
3. ALL NUTS SHALL BE TAPPED OVERSIZE PRIOR TO GALVANIZING.
4. ALL NUTS AND WASHERS SHALL BE ASSEMBLED BY THE SUPPLIER PRIOR TO DELIVERY.
5. ANCHOR BOLTS AB1 TO BE USED WITH LIGHT SERIES FOUNDATION TYPE F1.



REVISIONS		
DATE	BY	DESCRIPTION

**TRAFFIC SIGNAL AND
PEDESTRIAN CORRIDOR
STRUCTURES**

29 mm (1 1/8") DIA.
ANCHOR BOLT AB1



DESIGN	BY: <u>CDW</u>	CHECKED: <u>SSR</u>	BY: <u>JGW</u>	CHECKED: <u>SSR</u>
DETAILS				

RELEASED FOR CONSTRUCTION BY: _____	
DIRECTOR TRAFFIC ENGINEERING	DATE
SCALE: <u>NTS</u>	COMPONENT No. <u>AB1</u>
	SHEET No. <u>AB1</u>