

4

3

2

1

NOTES UNLESS OTHERWISE SPECIFIED:

- X-TENUATOR TO BE INSTALLED PER MANUFACTURER'S INSTRUCTIONS.
- SEE SHEET 3 FOR DETAILS 'A, B, C & D'.

Item No.	Part No.	Description	Qty	UoM	
1	B100238	Nose Cover, X-TENUator	1.00	EA	
2	B100239	EA Nose Cartridge, X-TENUator	1.00	EA	
3	B100244	Cable Anchor Weldment,	2.00	EA	
4	B061072	HEAD UNIT, X350, THREAD CLEANUP	2.00	EA	
5	B100348	Cable Friction Plate,	2.00	EA	
6	B100247	Upper Head Support Weldment,	1.00	EA	
7	B100250	Lower Head Support Plate,	1.00	EA	
8	B100251	Head Support Leg Weldment,	2.00	EA	
9	B100254	Leaning Post Weldment,	5.00	EA	
10	BSI-1303053-00	W-Beam Comp Blockout 8"w/Knoch	10.00	EA	
11	B100259	Front Panel Guardrail Wldmnt	2.00	EA	
12	B100346	Slider Brace Weldment, Front	2.00	EA	
13	B100263	Back Panel Guardrail Wldmnt	2.00	EA	
14	B100266	Backstop Weldment, Right	1.00	EA	
15	B100267	Backstop Weldment, Left	1.00	EA	
16	B100280	Brace, Backstop, X-TENUator	1.00	EA	
17	B100281	Cable Assembly, X-TENUator	2.00	EA	
18	B080755	PLASTIC NUT PROTECTOR	16.00	EA	
19	K080123	Kit, X-Tension Shear Bolt,	1.00	EA	
20	K100201	Tether Kit, X-TENUator	1.00	EA	
21	4002138	Cable Tie 15x1/4 dia UV Blk	2.00	EA	
BSI-1407017-KT			FRICITION PLATE HARDWARE KIT	1.00	EA
31	2001615	C-Scr HH M20-2.5x75mm Gr 5.8	8.00	EA	
BSI-1407018-KT			NOSE CARTRIDGE & NOSE COVER	1.00	EA
41	2000446	C-Scr HH M6-1x25mm Mgal	10.00	EA	
42	2001737	Wshr M6 1.8mm O.D X1.6mm thick	6.00	EA	
43	2000457	Wshr M6 Mgal Class 6	14.00	EA	
44	2000452	Nut HN M6-1 Mgal Class 6	10.00	EA	
BSI-1407019-KT			HEAD SUPPORT LEG HARDWARE KIT	1.00	EA
51	2001738	Bolt HH M16-2 x 90, Class 8.8	4.00	EA	
52	2001739	Wshr M16, Class 8.8, Mgalv	8.00	EA	
53	2001146	Nut HN 16mm-2.0 Class 8.8	4.00	EA	
BSI-1407020-KT			UPPER & LOWER HEAD UNIT	1.00	EA
61	2000448	C-Scr HH M20-2.5x65mm Mgal	2.00	EA	
62	2000449	C-Scr HH M20-2.5x60mm Mgal	6.00	EA	
63	2000459	Wshr M20- Mgal Class 8	16.00	EA	
64	2000454	Nut HN M20-2.5 Mgal Class 8	8.00	EA	
BSI-1407021-KT			HEAD UNIT HARDWARE KIT	1.00	EA
70	2001729	Guardrail Bolt 16mm-2.0 x 40mm	16.00	EA	
71	2001736	Guardrail Nut, N Recess M16-2.0	16.00	EA	
BSI-1407022-KT			GUARDRAIL PANEL HARDWARE KIT	1.00	EA
81	2001746	Bolt HH M10-1.5 x 230, Cls 8.8	10.00	EA	
82	2001747	Wshr M10 38mm O.D. x 1.6mm	10.00	EA	
83	2001613	Wshr FL M10 Class 8.8 MGal	15.00	EA	
84	2001612	Nut HN M10-1.5 Class 8.8 MGal	15.00	EA	
BSI-1407023-KT			SLIDER BRACE HARDWARE KIT	1.00	EA
91	2001744	Bolt HH M12-1.75 x 35	16.00	EA	
92	2001745	Wshr M12, Class 8.8, Mgalv	16.00	EA	
93	2001458	Wshr SL M12 Cl 8.8 MGal	16.00	EA	
94	2001114	Nut HN M12-1.75 Cl 8.8 MGal	16.00	EA	

© 2012 BARRIER SYSTEMS INC.
THE INFORMATION CONTAINED IN THIS
DRAWING IS THE SOLE PROPERTY OF
BARRIER SYSTEMS INC. ANY REPRODUCTION
IN PART OR WHOLE WITHOUT THE WRITTEN
PERMISSION OF BARRIER SYSTEMS INC. IS
PROHIBITED.

UNLESS OTHERWISE SPECIFIED
DIMENSIONS ARE IN INCHES.
TOLERANCES ARE:

FRACTIONS DECIMAL ANGLES
±1/16 .XX = ±.03 ±1/2°
.XXX = ±.010

INTERPRET DIMENSIONS AND
TOLERANCES PER ASME
Y14.5-1994

APPROVALS

DRAWN BY: JR

DRAWN DATE: 02/09/10

APPR'D BY: GAD

APPR'D DATE: 02/09/10

THIRD ANGLE PROJECTION

DO NOT SCALE DRAWING

G	2373	07/18/14
F	2122	08/28/13
E	2074	05/14/13
D	2034	3/25/13
C	1704	6/7/11
B	1537	11/12/10
A	1573	9/13/10
REV	ECN#	DATE

BARRIER SYSTEMS
180 River Road
Rio Vista, CA 94571
Tel: 888-800-3691
www.barriersystemsinc.com

TITLE	
X-TENUATOR 100kph NARROW	
SIZE	DWG NO.
B	XTEN100N
SCALE	1:32
SHEET	1 OF 4
REV.	G

Doc. B100108

4

3

2

1

4

3

2

1

NOTES UNLESS OTHERWISE SPECIFIED:

1. FOR DETAILS, SEE SHEET 3.

D

D

SEE DETAIL A

[533]
21"

[422]
16 5/8"

[845]
33 1/4"

C

C

[1073]
42 1/4"

[1099]
43 1/4"

[1291]
50 13/16"

[1249]
49 3/16"

[1181]
46 1/2"

[1657]
65 1/4"

([7550])
(24'-9 1/4")

B

B

[704]
27 3/4"

[793]
31 3/16"

SEE DETAIL D

([926])
(36 7/16")

A

A

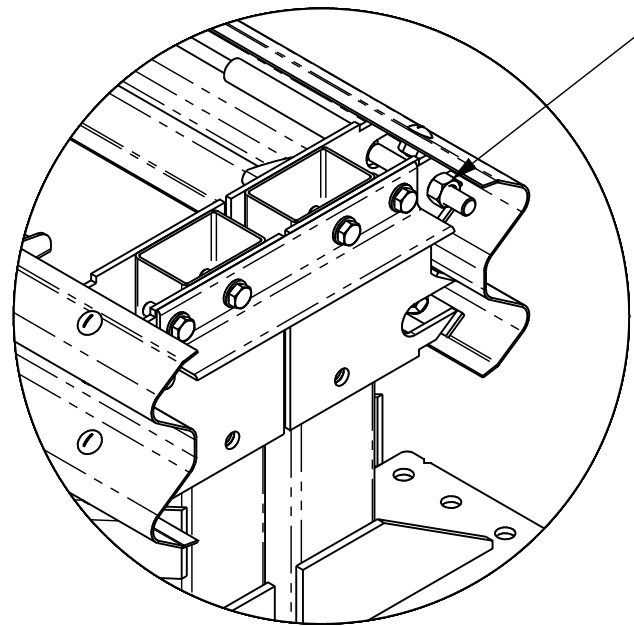
SIZE B	DWG. NO.	XTEN100N	REV. G
SCALE 1:25	SHEET 2 OF 4		

4

3

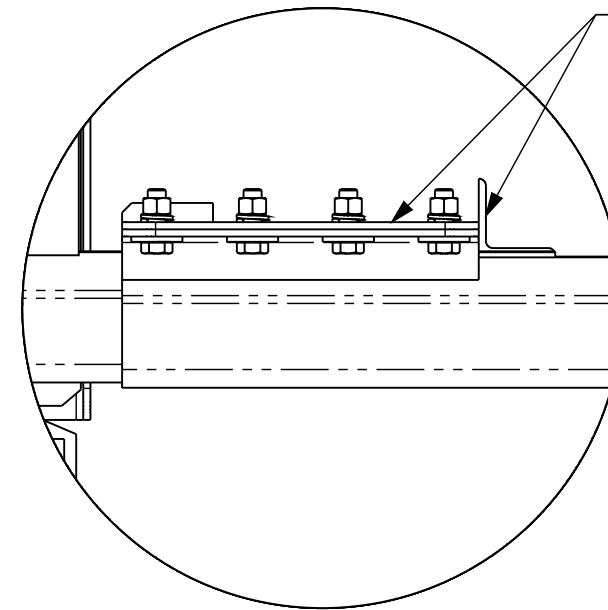
2

1



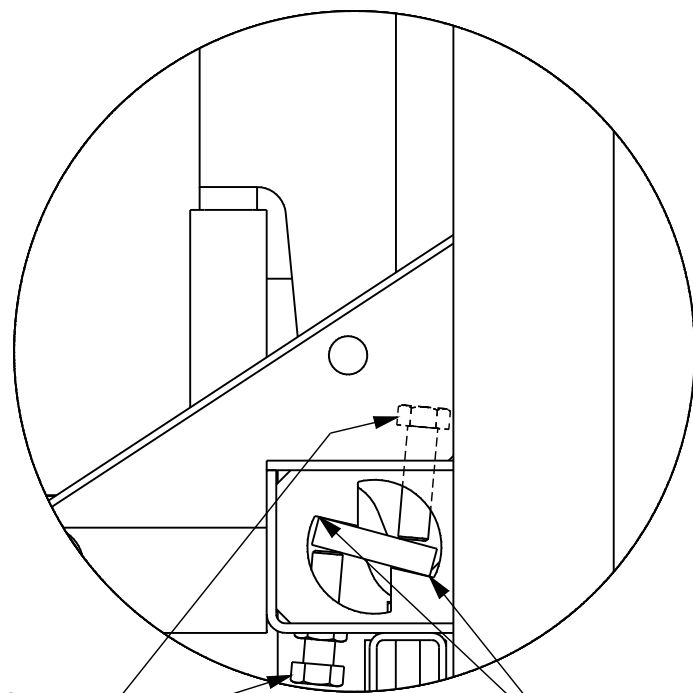
NOTE: DO NOT USE A WASHER ON BACKSTOP END OF THE CABLE

DETAIL A
SCALE 1 : 10



NOTE: PARTS SHOULD BE IN CONTACT WITH EACH OTHER

DETAIL B
SCALE 1 : 5

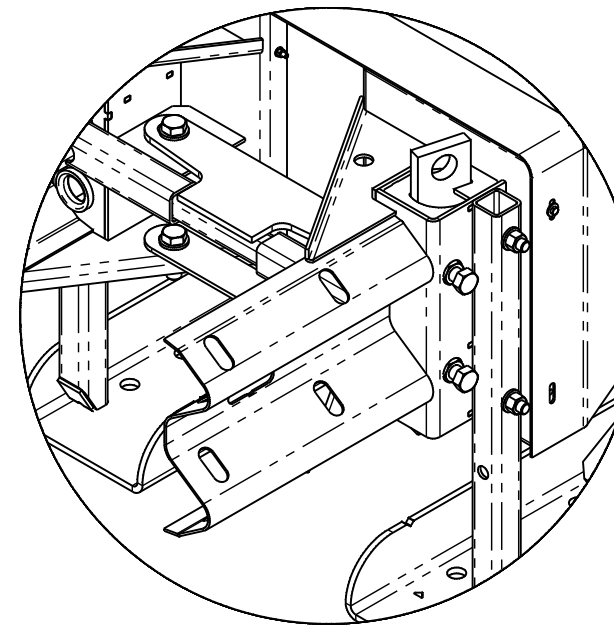


NOTE: WHILE TURNING THE FRICTION PLATE, ALTERNATE TIGHTENING OF THE BOLTS TO EASE THE ROTATION OF THE FRICTION PLATE TO ITS FINAL POSITION

DETAIL C
SCALE 1 : 5

UPPER SIDE BRACKET OF IMPACT HEAD HAS BEEN HIDDEN FOR CLARITY

NOTE: THE EDGES OF THE FRICTION PLATE SHOULD BE TOUCHING THE FLAT AREAS OF THE CABLE LOCKING PLATES



DETAIL D
SCALE 1 : 10
SOME ITEMS HAVE BEEN HIDDEN FOR CLARITY

D

D

C

C

B

B

A

A

SIZE B	DWG NO.	XTEN100N	REV. G
SCALE AS NOTED	SHEET 3 OF 4		

4

3

2

1

D

D

C

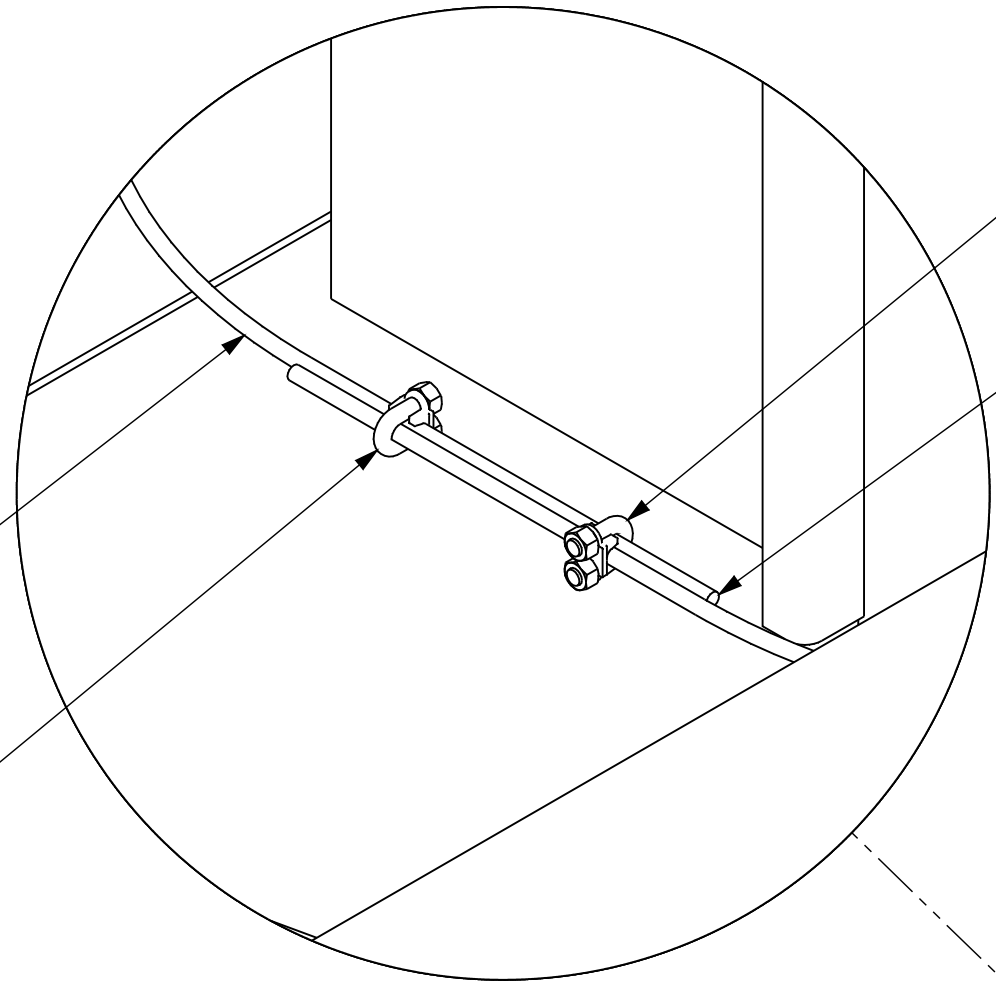
C

B

B

A

A



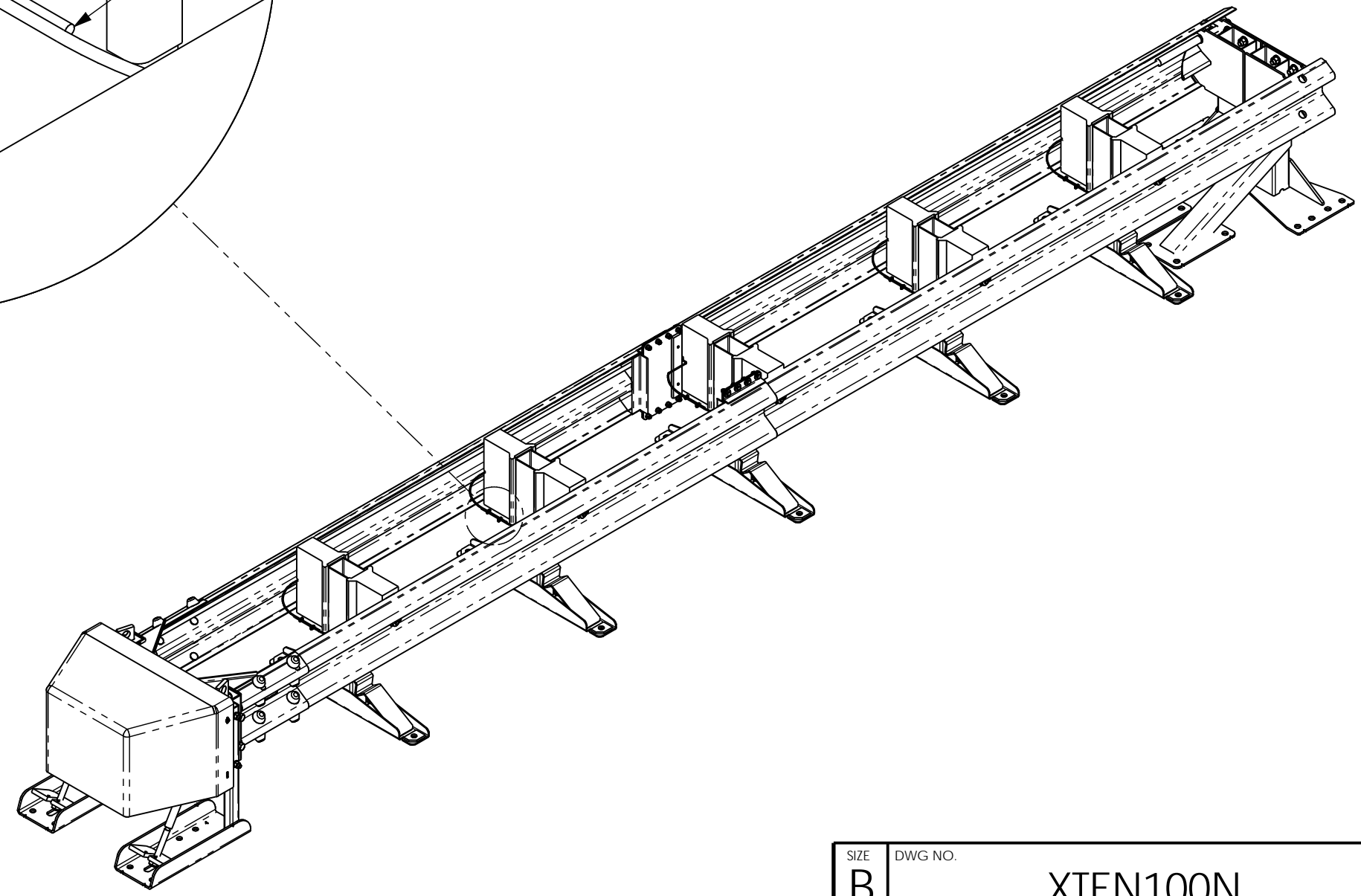
*NOTE: ORIENTATION OF CLAMP IS TO HAVE U-BOLT ON THE SIDE OF THE CUT END OF WIRE ROPE

OVERLAP WIRE ROPE A MINIMUM OF 3 3/4"

BLOCKOUT TETHER (BSI PART # B100282)

3/16" GALVANIZED WIRE ROPE CLAMP (BSI PART # 4000317)

DETAIL E
SCALE 1 : 2



SIZE B	DWG NO.	XTEN100N	REV. G
SCALE 1:25			SHEET 4 OF 4