



## Preliminary Design Study for the Bridge on PR 204 over the Red River



# Preliminary Design Study for the Bridge on PR 204 over the Red River

## Round 1 Engagement

Fall 2024

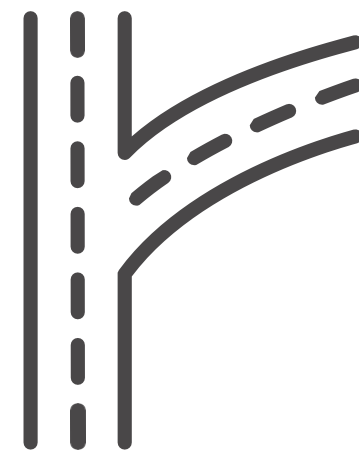


# Welcome and Purpose

The **purpose** of today's engagement is to:



Introduce the Project team and provide information on the **purpose and scope** of the project.



Collect information to assist with the determination of **whether to rehabilitate or replace the existing bridge.**



Provide you with an opportunity to **share your feedback and ask questions.**

# Agenda

1. Project Team
2. Background
3. Bridge Lift
4. Study Area
5. Project Scope
6. Preliminary Design
7. Engagement Process
8. Timeline
9. Discussion
10. Next Steps
11. Questions / Comments



# Project Team

5



- Abdulgafar Mohammed  
*Project Manager, Projects Management Branch*
- Andrew Pankratz  
*Bridge Design Engineer, Bridges & Highway Structures*
- Michael Hagos  
*Design Engineer, Bridges & Highway Structures*
- Mandip Sainbhi  
*Technical Services Engineer, Capital Region*



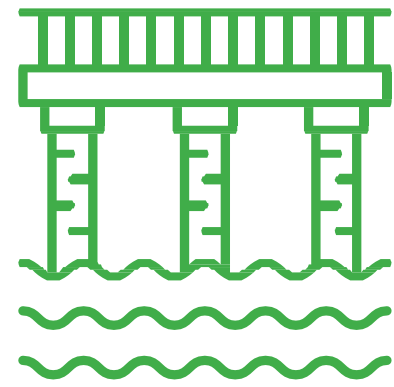
- Erin Huck  
*Project Manager*
- Crista Gladstone  
*Engagement Lead*
- Tracey McKenna  
*Engagement Support + Communications*



- Jim Lukashenko  
*Project Manager*



# Background



The existing bridge was constructed in

1935

The bridge has a six-meter-wide road for two lanes of traffic and a sidewalk on the north side.



- The bridge is **beyond its expected service life** and needs to be either rehabilitated or replaced.
- Several bridge components require replacement/rehabilitation. The bridge is currently under a 33-ton load restriction.
- The existing bridge is a vital link over the Red River. Further restriction(s) or closure of the bridge would pose a significant impact to residents and industry.
- The bridge is a designated a Historic Site by the Manitoba Historical Society (MHS). The MHS is a public organization and is not affiliated with the Government of Manitoba.



# Lift Component of the Bridge

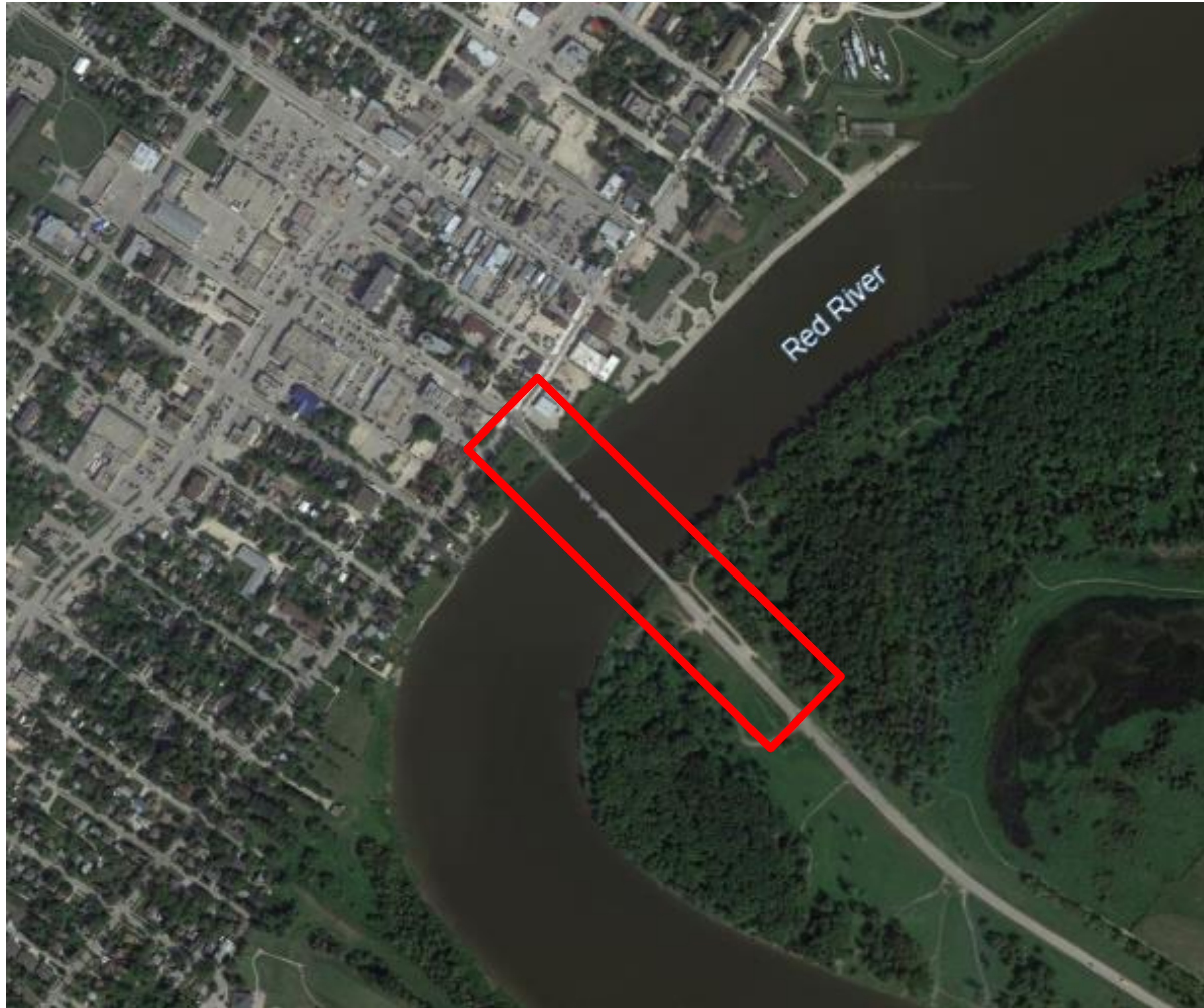
7



We have received an official letter from Transport Canada explaining that there is no known current or future plan to construct or revive marine infrastructure upstream of Selkirk capable of birthing or offloading medium to large commercial vessels.



# Study Area



The study area will focus on the Bridge on PR 204 over the Red River in the City of Selkirk, Manitoba.

The bridge is part of the Regional Highway System. It is the main access from the east side of the Red River to the City of Selkirk and conveys about 7,290 vehicles per day.

PR 204 is part of the La Vérendrye Trail highway series. It extends north of Winnipeg along the Red River for 30.9 km (19.2 miles) and ends at Selkirk and PTH 9A.



# Project Scope

Manitoba Transportation and Infrastructure (MTI) engaged WSP Canada Inc. (WSP) to complete a detailed condition assessment of the bridge and to undertake a comparison evaluation of rehabilitation and replacement options. Following the assessment, WSP will issue a report recommending whether rehabilitation or a replacement is the preferred alternative.

AECOM Canada Ltd. (AECOM) was hired to develop and implement a public and stakeholder engagement program. The objective is to identify and engage with rights holders, stakeholders, and the public from the start of the project (design phase) until the completion of construction.





# Project Scope

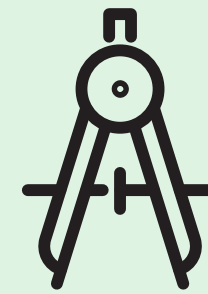
10

The goals of this project are to:

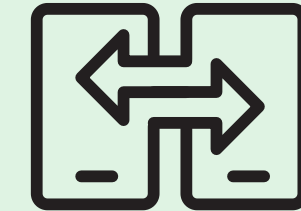
- Determine whether to rehabilitate or replace the existing bridge
- Produce a preliminary design for the bridge rehabilitation or replacement

During the Preliminary Design, the project team must take into account several factors including:

- Transportation demands;
- Standards and regulatory requirements;
- Benefits and challenges with revitalizing vs. replacing the existing bridge;
- Initial and life cycle costs;
- Service life of proposed design;
- Traffic and access impacts;
- Detours and construction / seasonal timing;
- Site specific conditions; and
- Local issues and considerations.



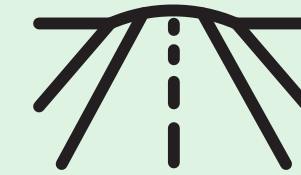
Technical  
Requirements



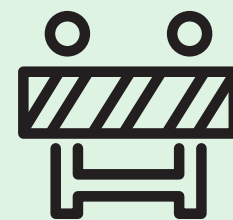
Revitalize vs.  
Replacement  
Benefits and  
Challenges



Costs  
(Initial and Life  
cycle)



Travel Patterns,  
Traffic and  
Access



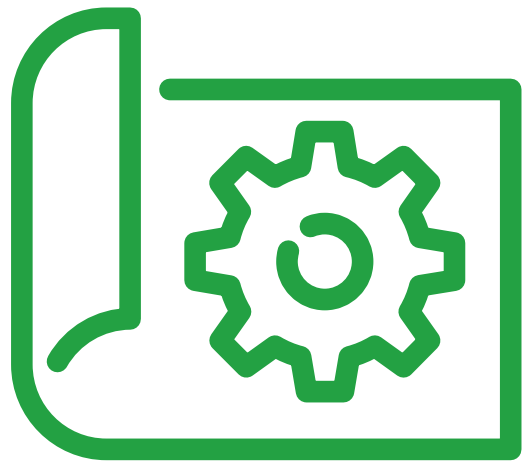
Site Conditions



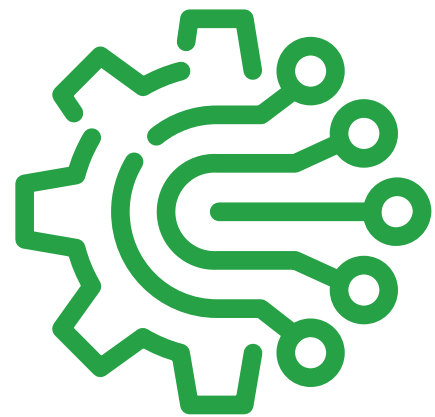
Rights Holders,  
Stakeholder and  
Public  
Engagement



# What is Preliminary Design?



- Preliminary engineering refines and extends the analysis of the preferred option by eliminating uncertainties and critical flaws; and defining the scope of the project, including major project elements, pros and cons, and cost estimates of each option.



- This information supports the selection of a preferred option with strong consideration to budget constraints and departmental strategies/plans.



- Stakeholder engagement is also a key part of the preliminary design process, and feedback collected from engagement events will be used to inform the preliminary design.



# Engagement Process

12

## Who will be involved:

- Rights Holders
- Residents
- Business owners
- Local government
- Provincial government
- Directly affected landowners and businesses
- Other interested parties
- General public

## Engagement objectives:

- To communicate Project information with the public, Rights Holders and stakeholders
- To collect input that will be integrated into the preliminary design and detailed design of the rehabilitation or the reconstruction of the bridge on PR 204 over the Red River.

## Engagement techniques:



Indigenous  
Rights Holders  
and local  
government  
meetings



Public  
engagement  
session



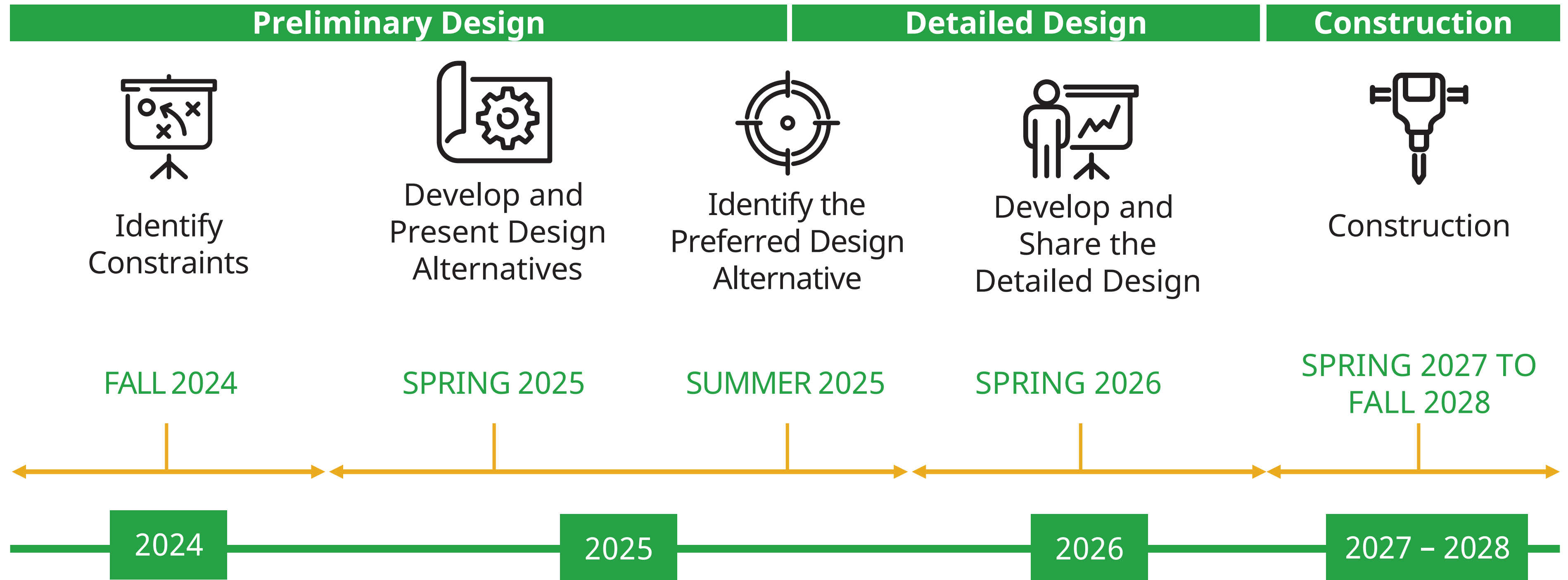
Newsletters



# Proposed Project Timeline

13

**We Are Here**





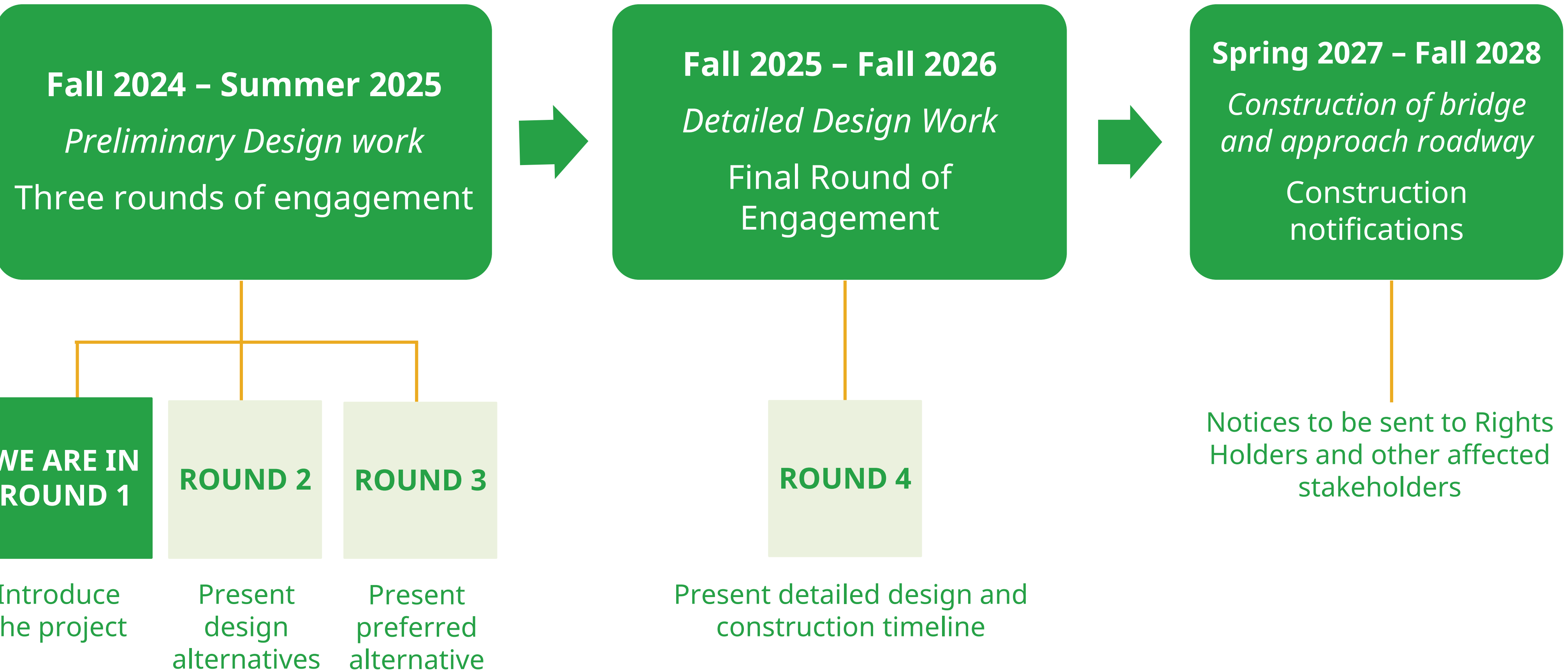
- What should we consider in preliminary design?
- How could the bridge become more user-friendly?
- What concerns or questions do you have about the project?
- Is there a time of year when construction is not ideal?
- How is the bridge currently being used for Active Transportation? E.g. cyclists, pedestrians.
- What are the Active Transportation needs and access requirements during construction?
- Are there any informal or local trails near the project site? Are there plans to add additional trails in the near future?



# Next Steps

15

## Engineering & Engagement Timeline





# Questions / Comments?

---

16





---

# Thank You

---

**For additional information, please contact:**

Tracey McKenna  
Community Engagement Specialist  
[Tracey.mckenna@aecom.com](mailto:Tracey.mckenna@aecom.com)