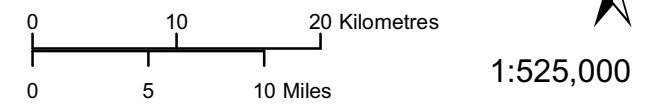


- Project 6 Local Assessment Area
- Project 6 Regional Assessment Area

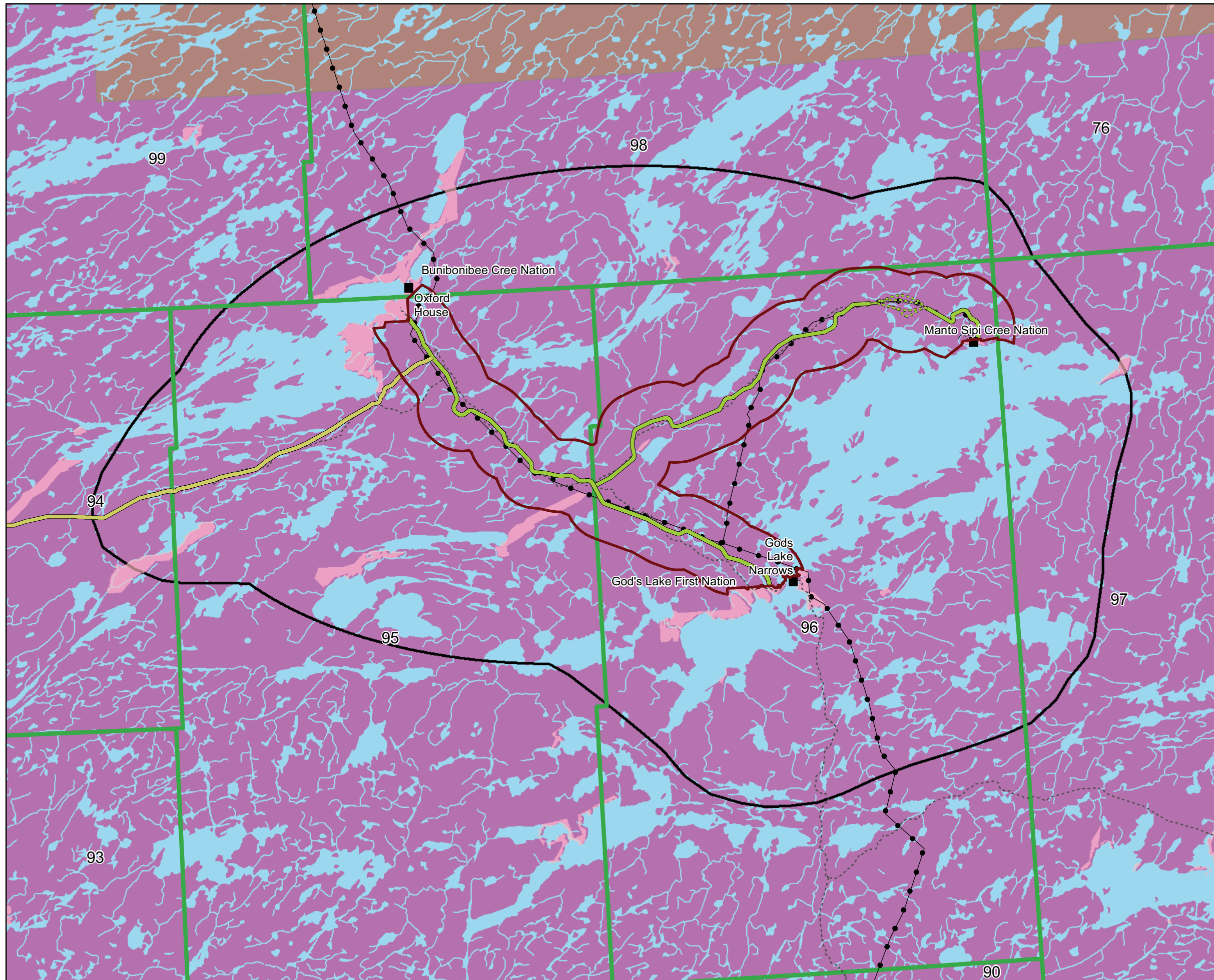
- Proposed Road Alignments
- Project 5: Anderson Junction to Bunibonibee
 - Project 6: Bunibonibee to God's Lake to Manto Sipi
 - Project 6: Manto Sipi Route Options

- Base Data
- Winter Road
 - Transmission Line
 - First Nation

Coordinate System: UTM Zone 14N NAD83
Data Source: MI - RRO, Joro, NRCAN, MLI
Date Created: March 12, 2018

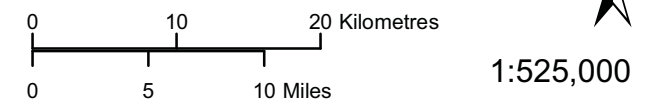


**Local and Regional
Assessment Areas
Project 6 Existing Environment
Wildlife Report**

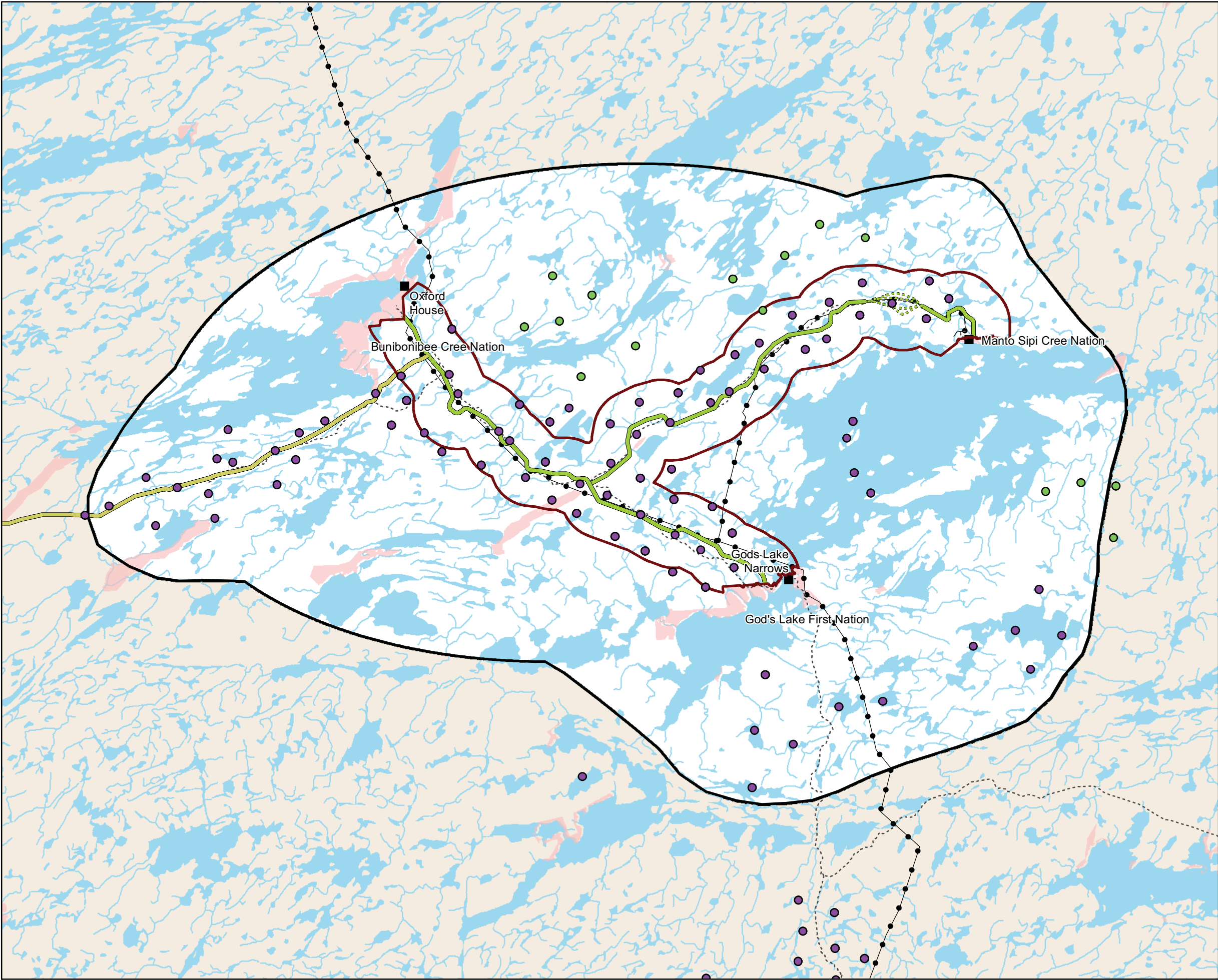


- Forest Management Units
- Game Hunting Areas
 - 3
 - 3A
- Proposed Road Alignments
 - Project 5: Anderson Junction to Bunibonibee
 - Project 6: Bunibonibee to God's Lake to Manto Sipi
 - Project 6: Manto Sipi Route Options
 - Project 6 Local Assessment Area
 - Project 6 Regional Assessment Area
- Base Data
 - Winter Road
 - Transmission Line
 - First Nation

Coordinate System: UTM Zone 14N NAD83
Data Source: MI - RRO, Joro, NRCAN, MLI
Date Created: March 15, 2018



**Game Hunting Areas and Forest Management Units
Project 6 Existing Environment
Wildlife Report**



Trail Camera Deployments

- 2016
- 2017

Proposed Road Alignments

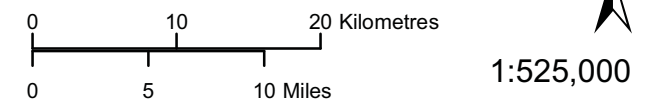
- Project 5: Anderson Junction to Bunibonibee
- Project 6: Bunibonibee to God's Lake to Manto Sipi
- ... Project 6: Manto Sipi Route Options

- ▭ Project 6 Local Assessment Area
- ▭ Project 6 Regional Assessment Area

Base Data

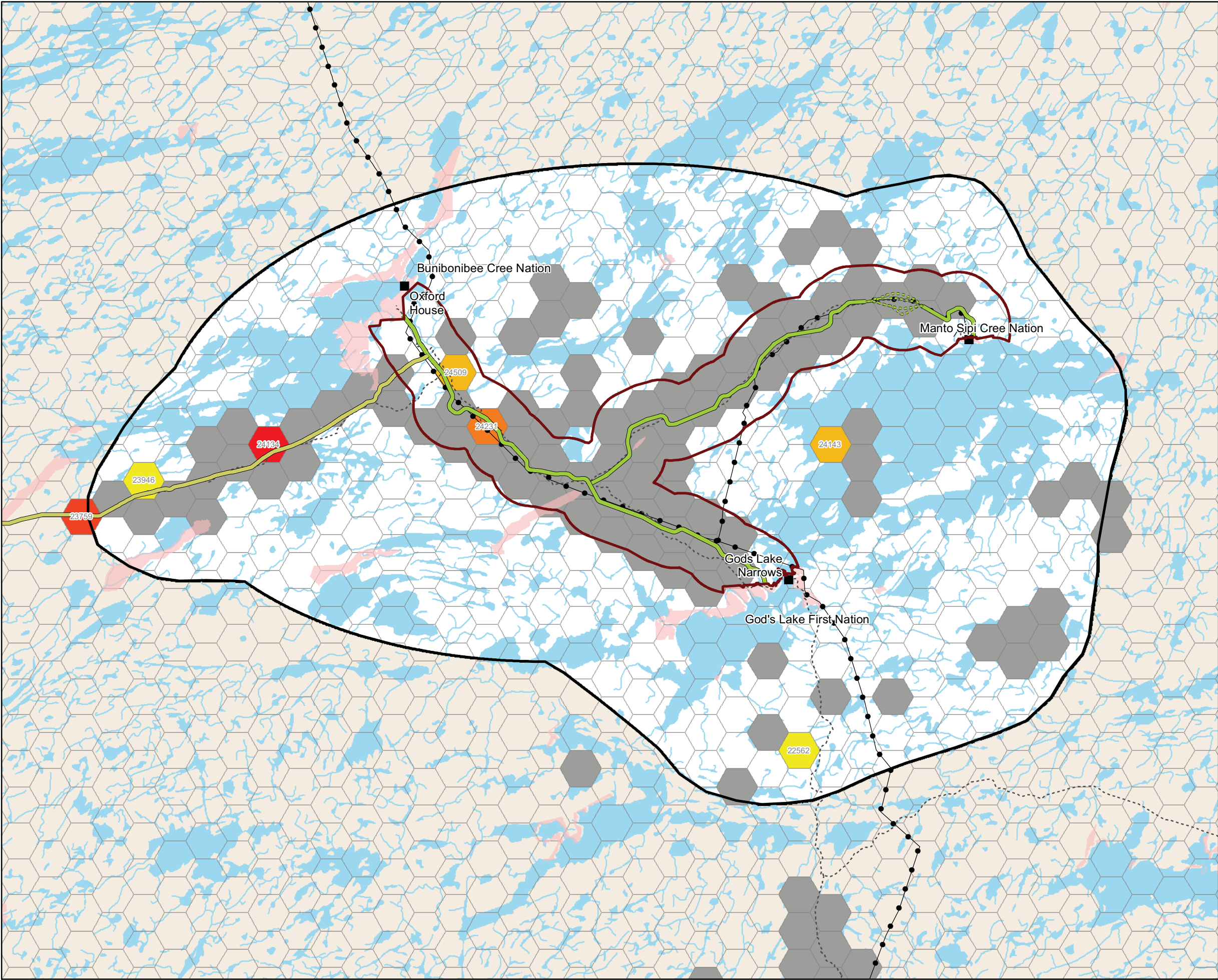
- Winter Road
- Transmission Line
- ▭ First Nation

Coordinate System: UTM Zone 14N NAD83
Data Source: MI - RRO, Joro, NRCAN, MLI
Date Created: February 26, 2018

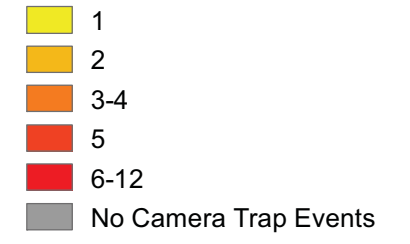


**Trail Camera Deployment
Locations 2016 - 2017
Project 6 Existing Environment
Wildlife Report**

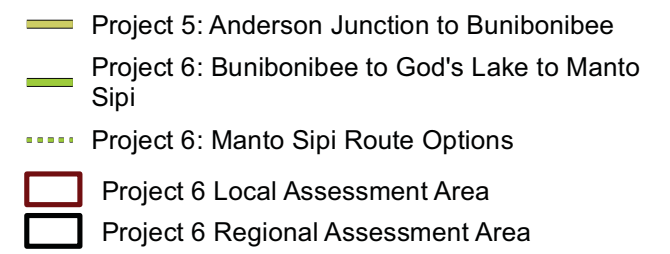
Maps 5 to 7 removed due to sensitive wildlife information



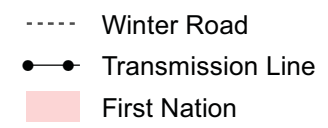
Number of Camera Trap Events



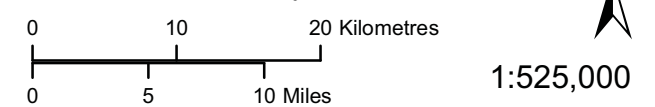
Proposed Road Alignments



Base Data

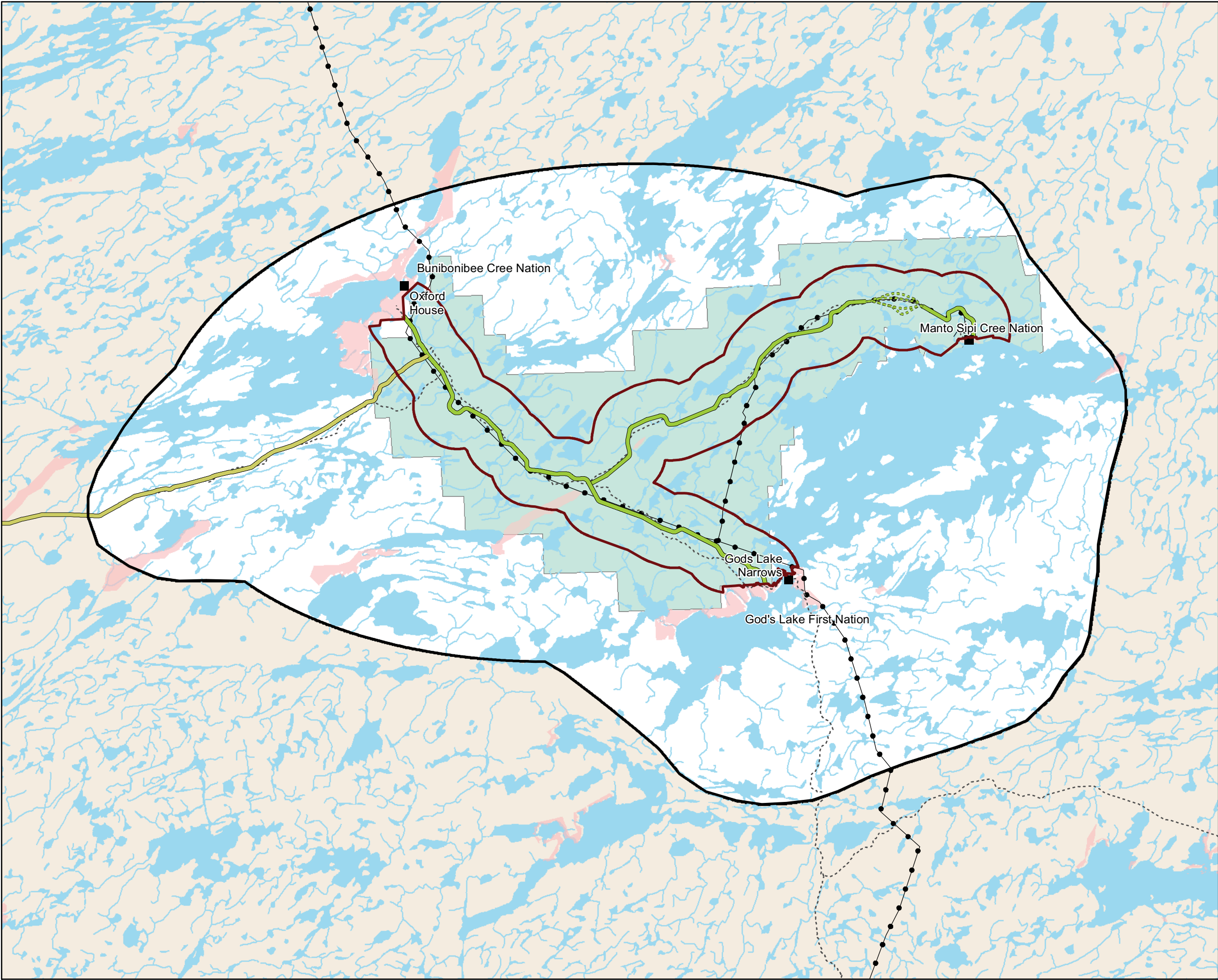


Coordinate System: UTM Zone 14N NAD83
Data Source: MI - RRO, Joro, NRCAN, MLI
Date Created: February 26, 2018



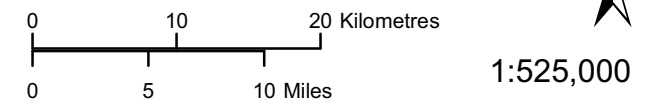
Black Bear Camera Occurrences March 1, 2016 to March 31, 2017 - All Seasons
Project 6 Existing Environment Wildlife Report
Map 8

Maps 9 to 14 removed due to sensitive wildlife information



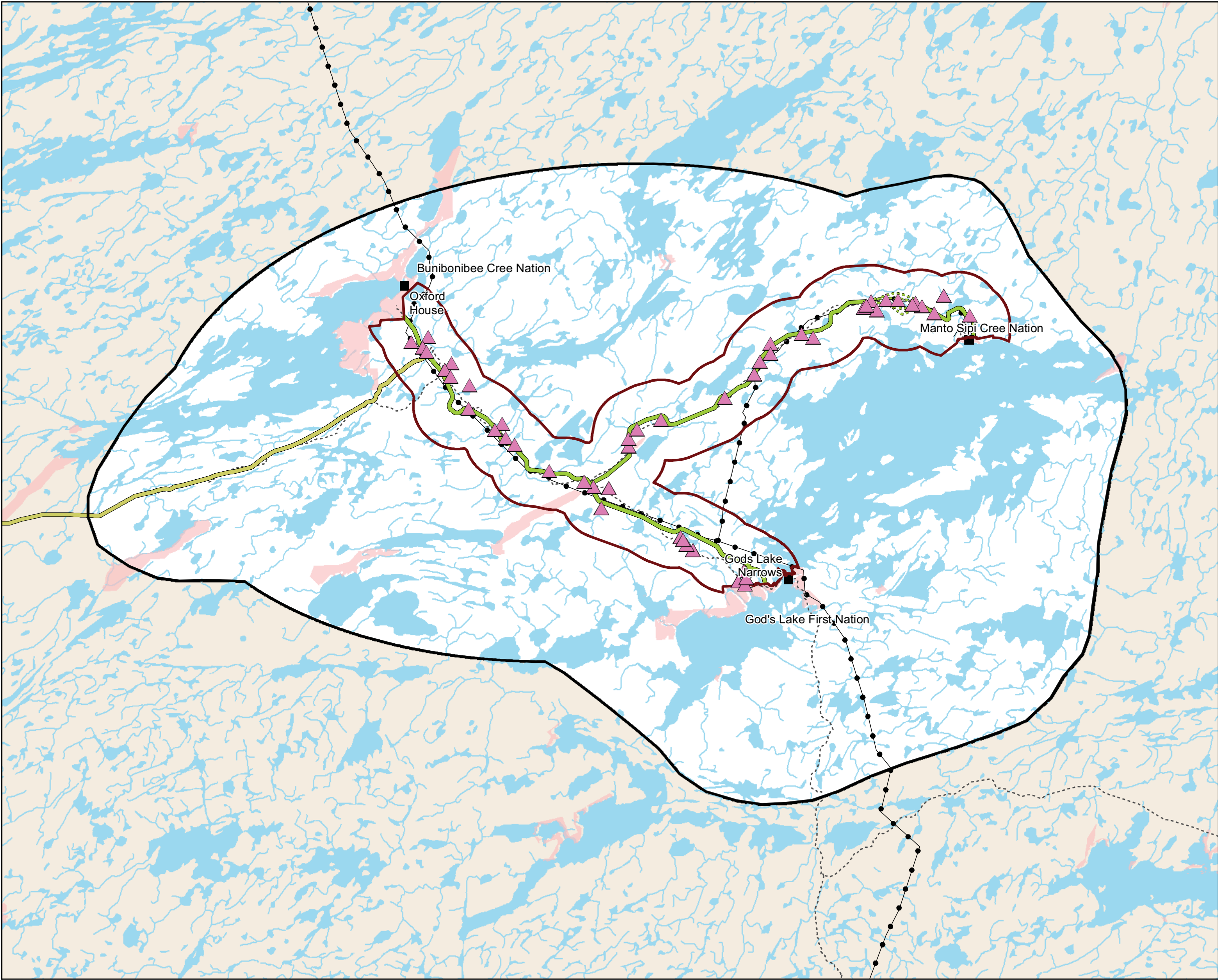
- 2016 - 2017 Moose Survey Area
- Proposed Road Alignments**
 - Project 5: Anderson Junction to Bunibonibee
 - Project 6: Bunibonibee to God's Lake to Manto Sipi
 - Project 6: Manto Sipi Route Options
 - Project 6 Local Assessment Area
 - Project 6 Regional Assessment Area
- Base Data**
 - Winter Road
 - Transmission Line
 - First Nation

Coordinate System: UTM Zone 14N NAD83
Data Source: MI - RRO, Joro, NRCAN, MLI
Date Created: March 12, 2018



**2016 and 2017 Aerial
Moose Survey Area
Project 6 Existing Environment
Wildlife Report**

Maps 16 to 17 removed due to sensitive wildlife information



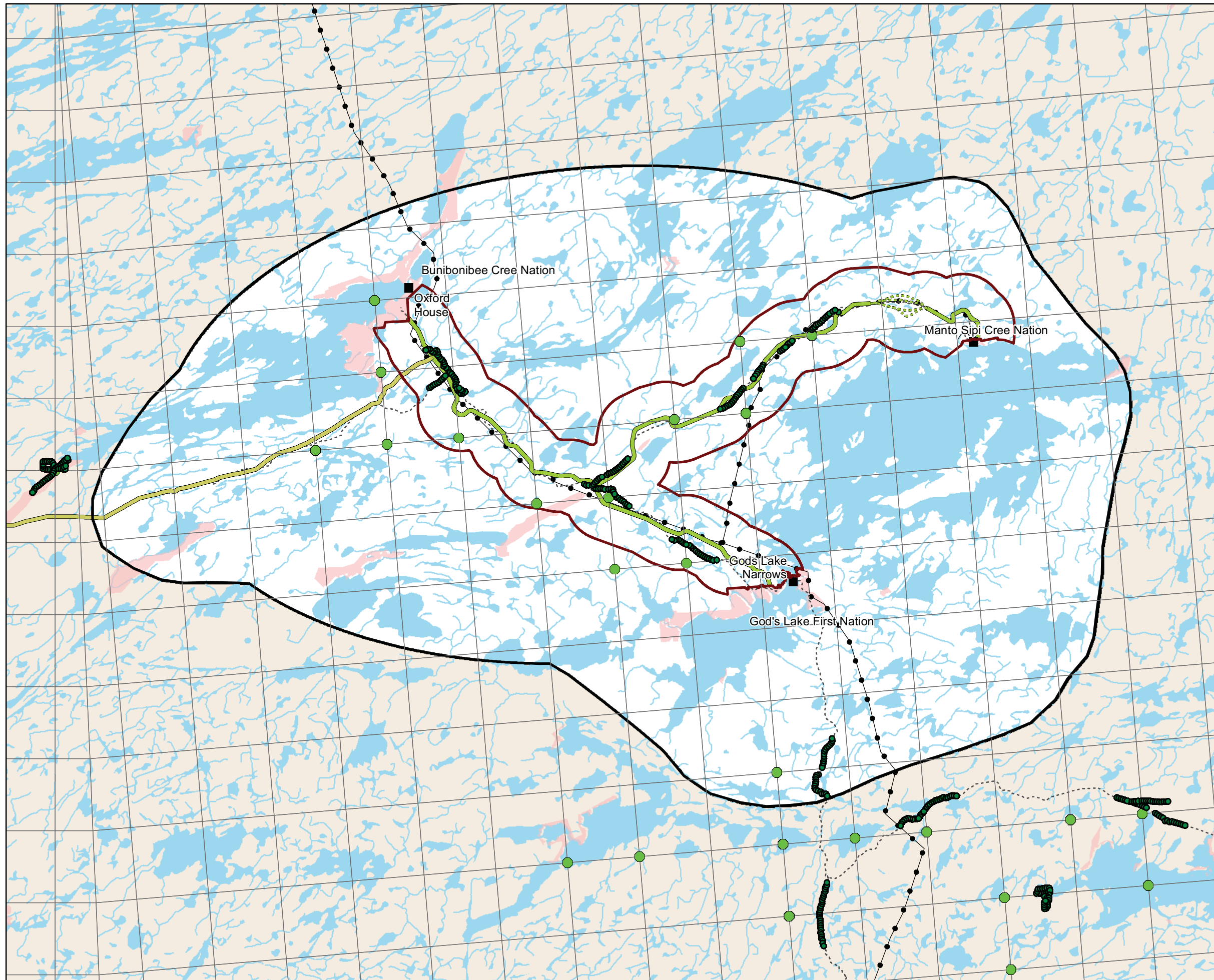
- ▲ 2016 ARU Deployment Locations
- Proposed Road Alignments**
 - Project 5: Anderson Junction to Bunibonibee
 - Project 6: Bunibonibee to God's Lake to Manto Sipi
 - Project 6: Manto Sipi Route Options
- ▭ Project 6 Local Assessment Area
- ▭ Project 6 Regional Assessment Area
- Base Data**
 - Winter Road
 - Transmission Line
 - First Nation

Coordinate System: UTM Zone 14N NAD83
 Data Source: MI - RRO, Joro, NRCAN, MLI
 Date Created: March 12, 2018

0 10 20 Kilometres
 0 5 10 Miles

1:525,000

**Project 6 2016 ARU
 Deployments**
**Project 6 Existing Environment
 Wildlife Report**



- Breeding Bird Atlas Point Count
 - Bird Atlas Locations
 - Manitoba Bird Atlas Grid
- Proposed Road Alignments**
- Project 5: Anderson Junction to Bunibonibee
 - Project 6: Bunibonibee to God's Lake to Manto Sipi
 - ⋯ Project 6: Manto Sipi Route Options
 - ▭ Project 6 Local Assessment Area
 - ▭ Project 6 Regional Assessment Area
- Base Data**
- ⋯ Winter Road
 - Transmission Line
 - ▭ First Nation

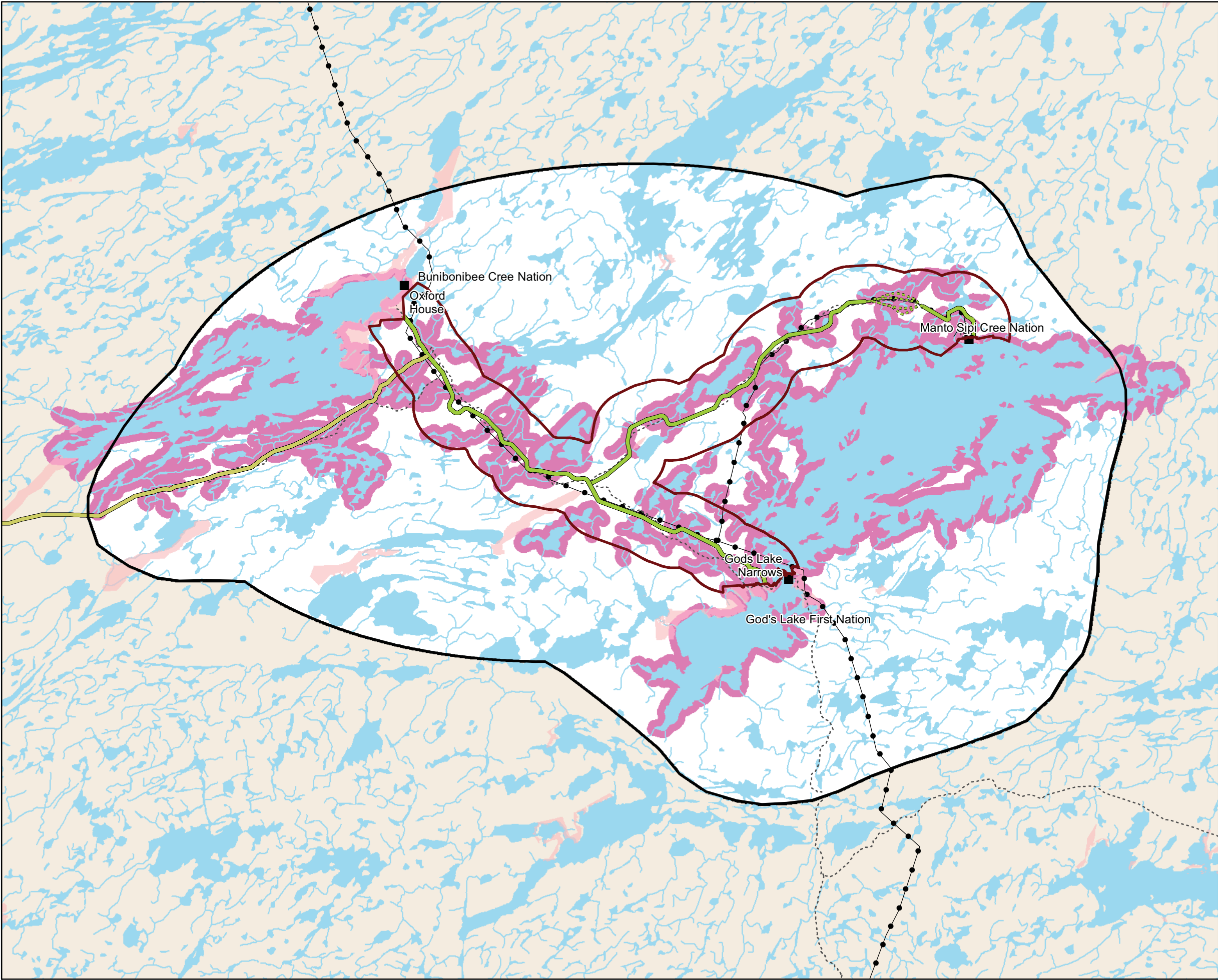
Coordinate System: UTM Zone 14N NAD83
 Data Source: MI - RRO, Joro, NRCAN, MLI
 Date Created: March 12, 2018

0 10 20 Kilometres
 0 5 10 Miles

1:525,000

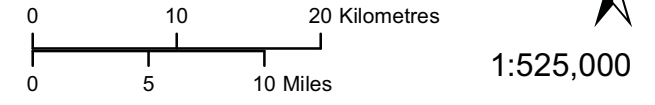
Breeding Bird Atlas

**Project 6 Existing Environment
Wildlife Report**

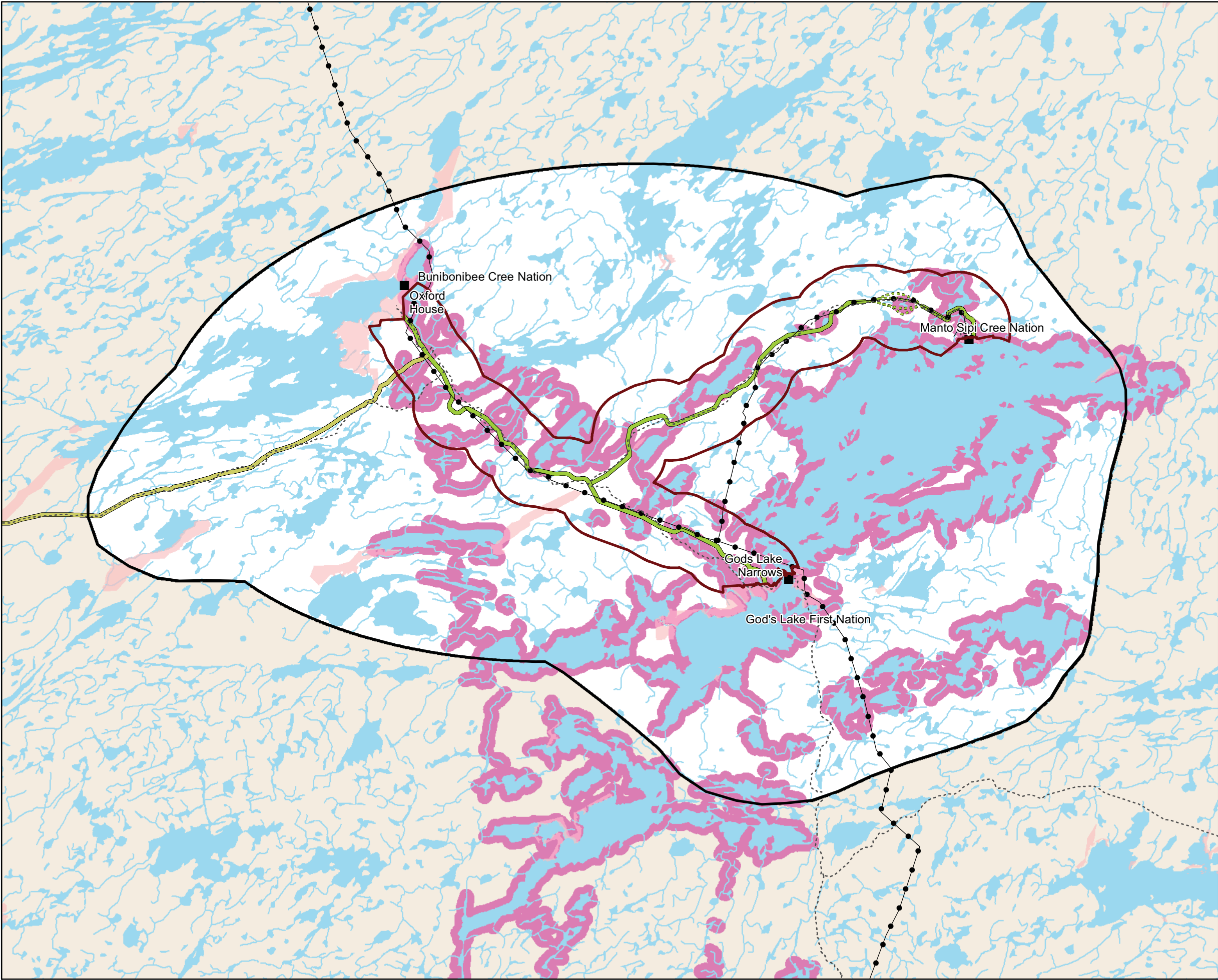


- June and July Waterfowl Survey Area
- Proposed Road Alignments**
 - Project 5: Anderson Junction to Bunibonabee
 - Project 6: Bunibonabee to God's Lake to Manto Sipi
 - ... Project 6: Manto Sipi Route Options
- ▭ Project 6 Local Assessment Area
- ▭ Project 6 Regional Assessment Area
- Base Data**
 - Winter Road
 - Transmission Line
 - First Nation

Coordinate System: UTM Zone 14N NAD83
Data Source: MI - RRO, Joro, NRCAN, MLI
Date Created: May 29, 2017



**June and July 2016
Aerial Waterfowl Survey Area
Project 6 Existing Environment
Wildlife Report**



- October Waterfowl Survey Area
- Proposed Road Alignments**
- Project 5: Anderson Junction to Bunibonabee
- Project 6: Bunibonabee to God's Lake to Manto Sipi
- Project 6: Manto Sipi Route Options
- Project 6 Local Assessment Area
- Project 6 Regional Assessment Area
- Base Data**
- Winter Road
-
- Transmission Line
- First Nation

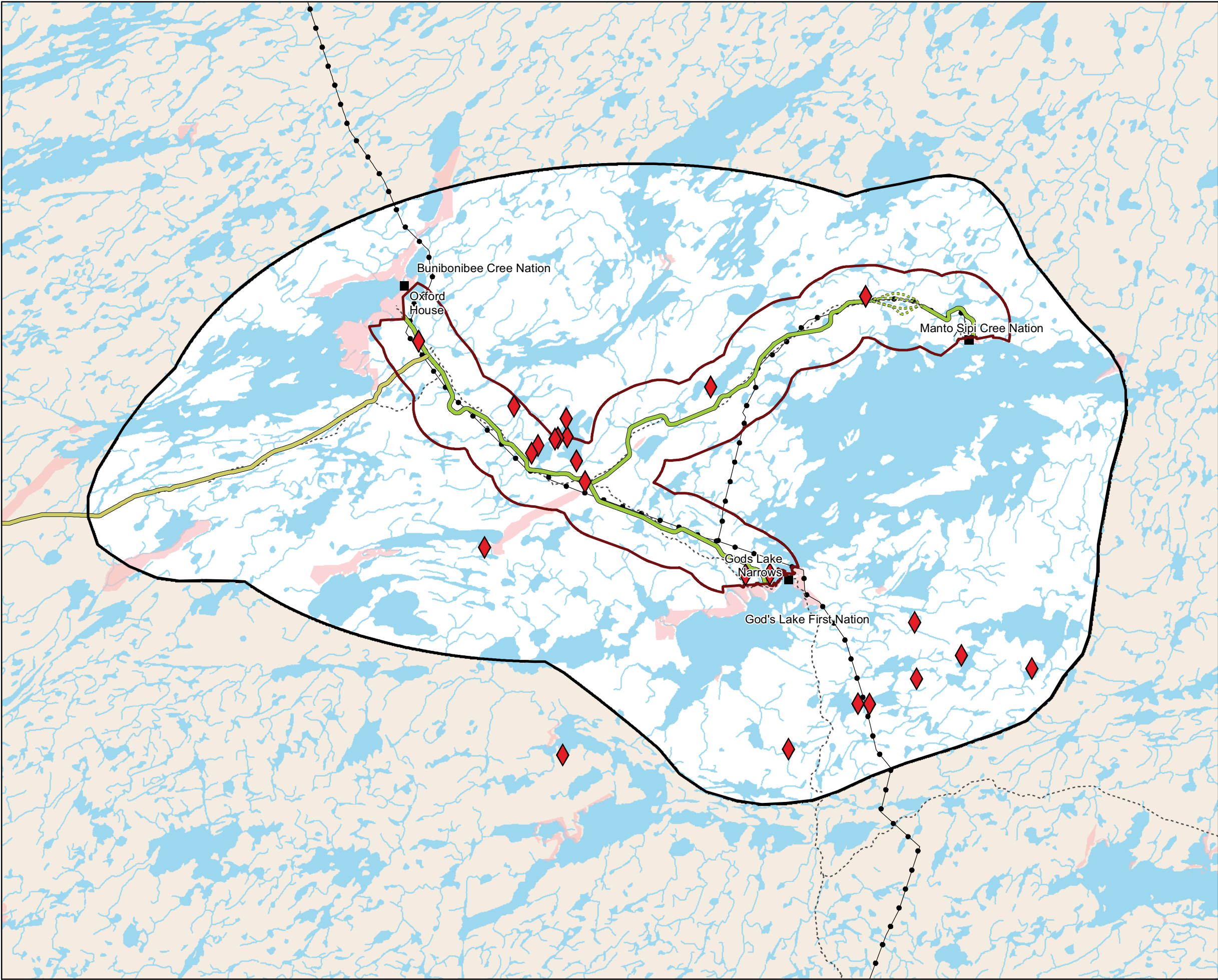
Coordinate System: UTM Zone 14N NAD83
 Data Source: MI - RRO, Joro, NRCAN, MLI
 Date Created: May 29, 2017

0 10 20 Kilometres
 0 5 10 Miles

N
 1:525,000

**October 2016 Aerial
 Waterfowl Survey Area
 Project 6 Existing Environment
 Wildlife Report**

Maps 22 to 23 removed due to sensitive wildlife information



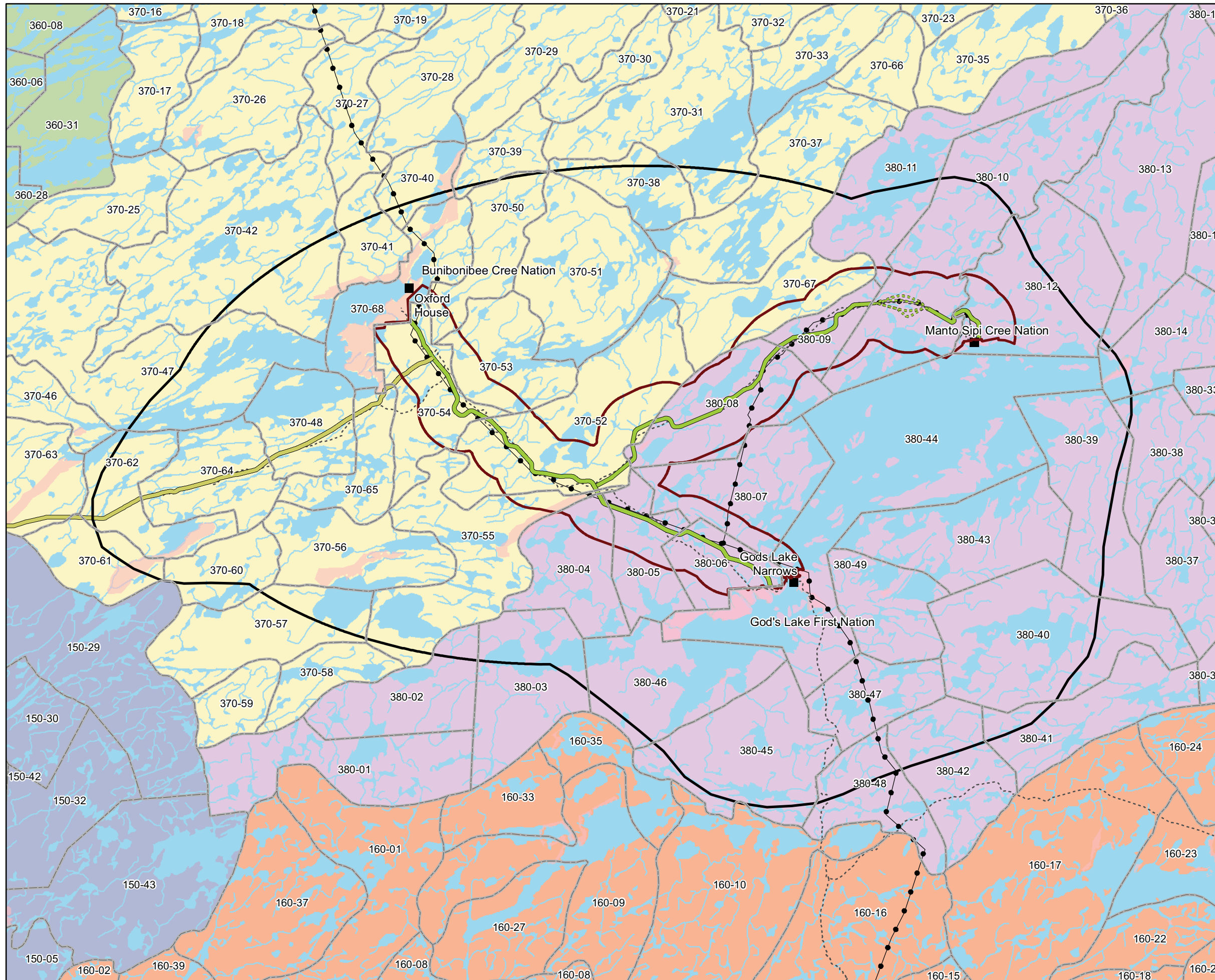
- ◆ Diving Duck Observations
- Proposed Road Alignments**
 - Project 5: Anderson Junction to Bunibonabee
 - Project 6: Bunibonabee to God's Lake to Manto Sipi
 - - - Project 6: Manto Sipi Route Options
 - Project 6 Local Assessment Area
 - Project 6 Regional Assessment Area
- Base Data**
 - - - - Winter Road
 - Transmission Line
 - First Nation

Coordinate System: UTM Zone 14N NAD83
 Data Source: MI - RRO, Joro, NRCAN, MLI
 Date Created: March 12, 2018

0 10 20 Kilometres
 0 5 10 Miles

N
 1:525,000

October 2016 Aerial Waterfowl Survey - Observations
Project 6 Existing Environment Wildlife Report



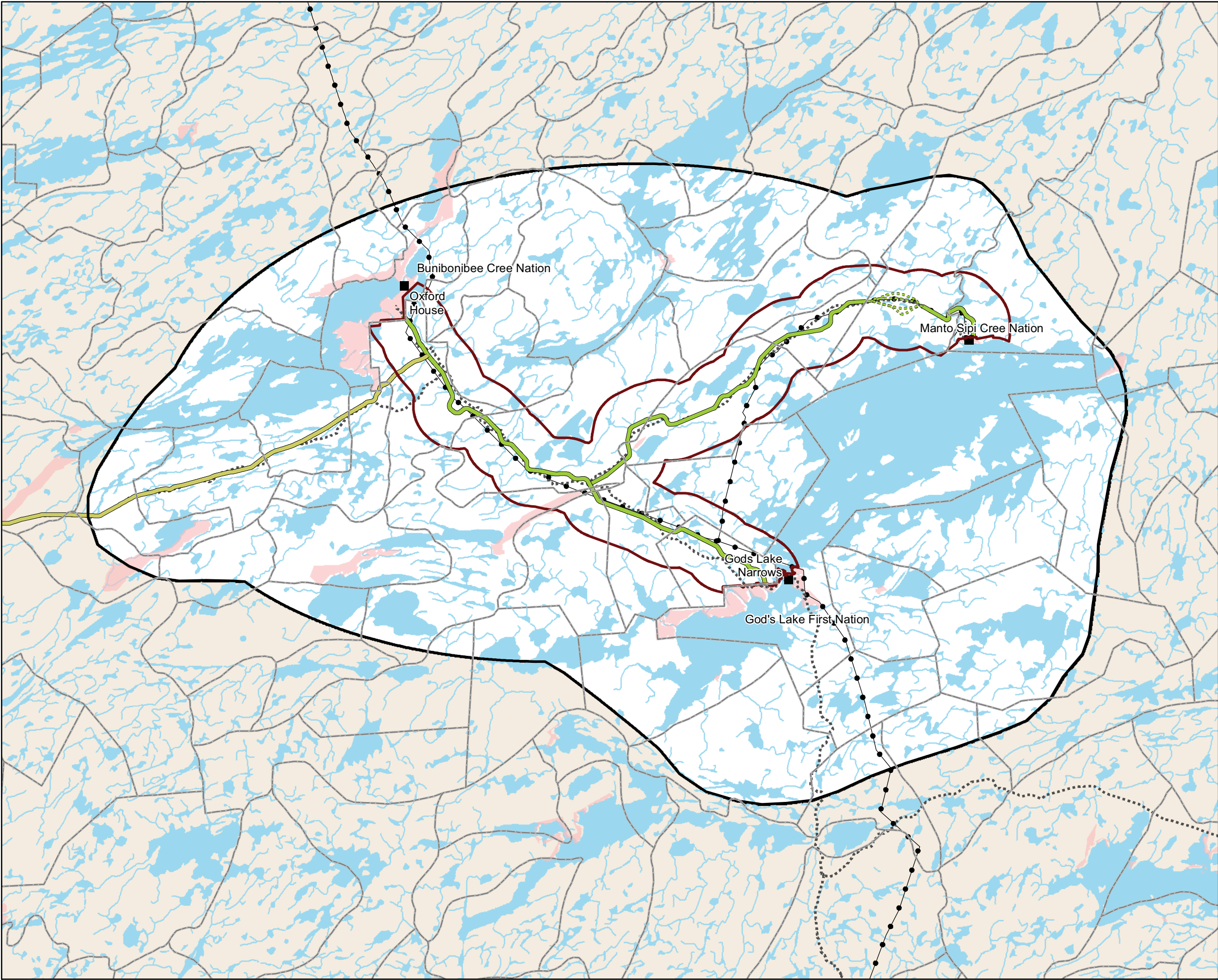
- Registered Traplines
- Registered Trapline Sections
 - Cross Lake (360)
 - God's Lake (380)
 - Island Lake (160)
 - Norway House (150)
 - Oxford House (370)
- Proposed Road Alignments
 - Project 5: Anderson Junction to Bunibonabee
 - Project 6: Bunibonabee to God's Lake to Manto Sipi
 - Project 6: Manto Sipi Route Options
 - Project 6 Local Assessment Area
 - Project 6 Regional Assessment Area
- Base Data
 - Winter Road
 - Transmission Line
 - First Nation

Coordinate System: UTM Zone 14N NAD83
 Data Source: MI - RRO, Joro, NRCAN, MLI
 Date Created: March 12, 2018

0 10 20 Kilometres
 0 5 10 Miles

1:525,000

**Registered Traplines in the Northern RTL Area 6
 Project 6 Existing Environment Wildlife Report**



- Registered Traplines
 - Registered Traplines Sampled
- Proposed Road Alignments
- Project 5: Anderson Junction to Bunibonibee
 - Project 6: Bunibonibee to God's Lake to Manto Sipi
 - Project 6: Manto Sipi Route Options
 - Project 6 Local Assessment Area
 - Project 6 Regional Assessment Area
- Base Data
- Winter Road
 - Transmission Line
 - First Nation

Coordinate System: UTM Zone 14N NAD83
 Data Source: MI - RRO, Joro, NRCAN, MLI
 Date Created: March 13, 2018

N

0 10 20 Kilometres
 0 5 10 Miles

1:525,000

Registered Traplines Sampled

**Project 6 Existing Environment
Wildlife Report**