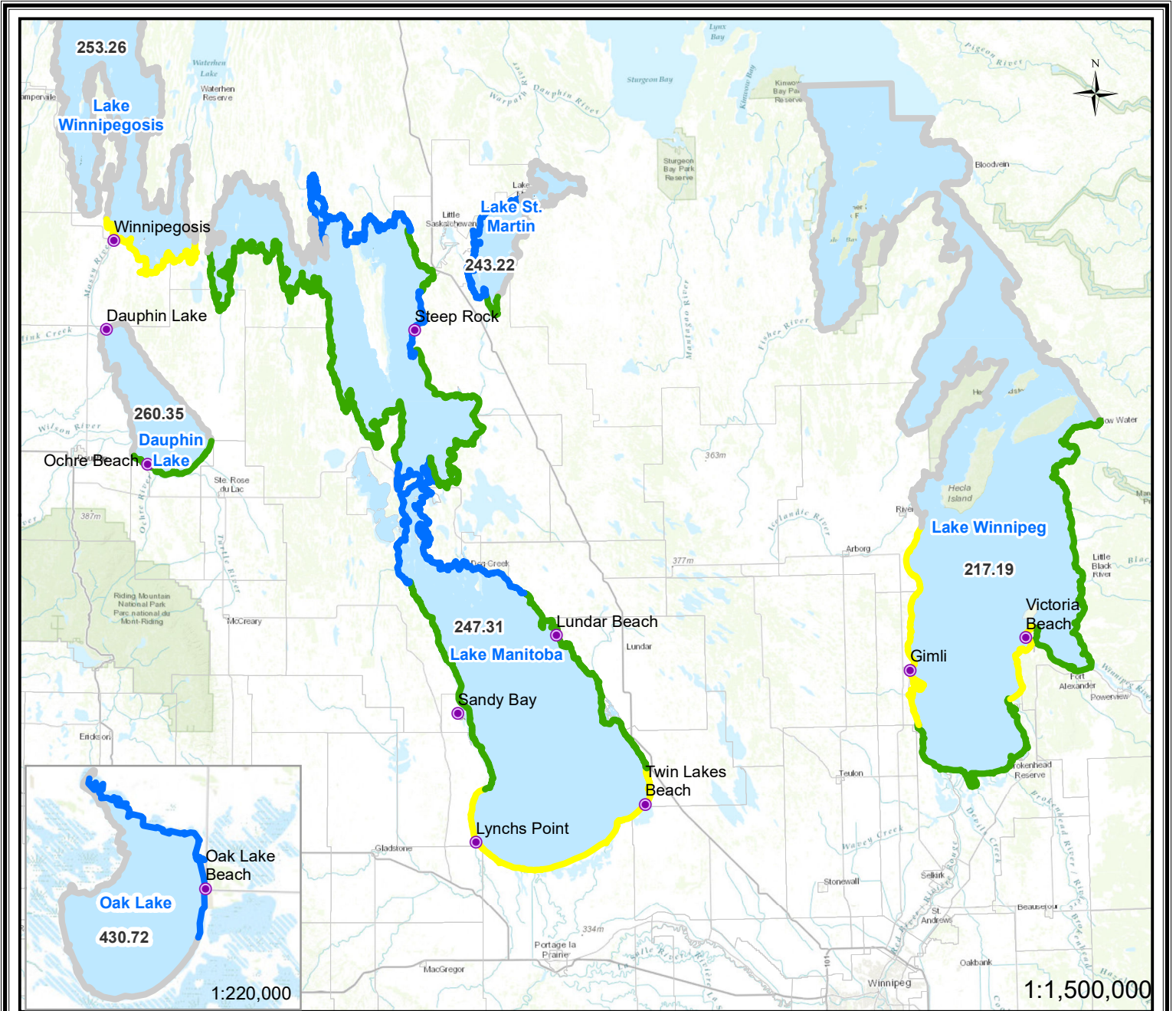


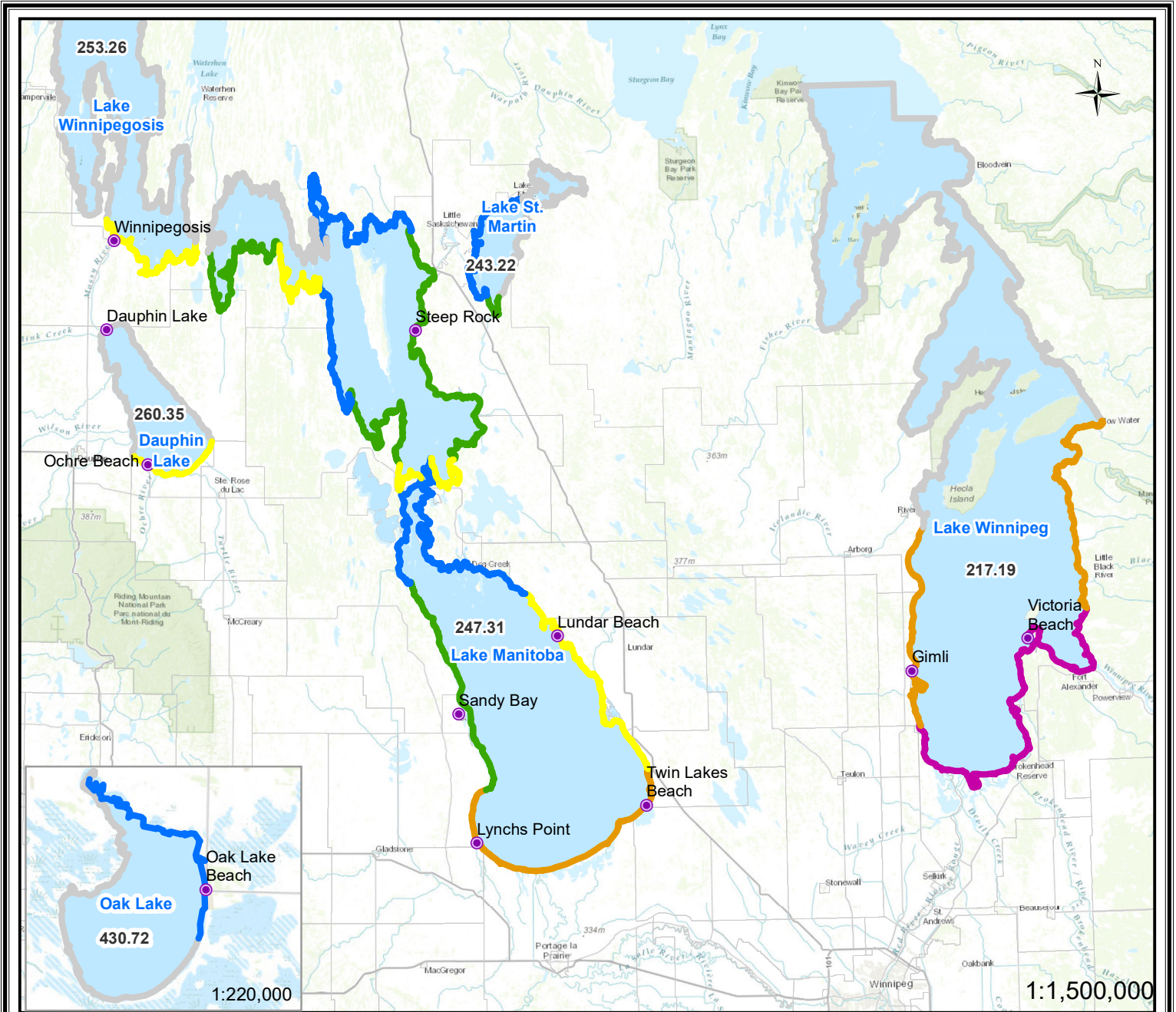
# Manitoba Lake Wind Effect Forecast for November 22 AM, 2023



Location	Ave.Dir.from North (degree)	Ave. Speed (km/h)	Location	Ave.Dir.from North (degree)	Ave. Speed (km/h)	Wind Effect Alert Categories	
Dauphin Lake	N (349)	21	Manipogo area	N (352)	19	Severe	Crest level increase will be greater than 1.5 meters; Wave action will be very significant and forceful.
MB Lake west side - Sandy Bay	NW (336)	25	Crane River area	N (351)	18		
MB Lake south side - Twin Beaches	NW (325)	24	Wpg Lake - Victoria Beach	NW (306)	21	High	Crest level increase will be in a range 0.9 ~ 1.5 meters; Wave action will be significant.
MB Lake middle - Vogar/The Narrows	NW (335)	21	Wpg Lake - Gimli Beach	NW (315)	20		
MB Lake east side - Lunder Beach	NW (328)	20	Wpg Lake - Alberta Beach	NW (302)	16	Moderate-High	Crest level increase will be in a range 0.6 ~ 0.9 meters; Wave action will be considerable.
Northeast 1	N (353)	15	Wpg Lake - O'Hanly	NW (303)	15		
Northeast 2	N (354)	15	Wpg Lake south side	NW (304)	22	Moderate	Crest level increase will be in a range 0.3 ~ 0.6 meters; Wave action will be moderate.
Guynesmer	N (346)	20	Lake Winnipegosis south side	N (353)	21		
The Bluff	N (345)	22	Oak Lake east side community	NW (333)	16	Low	Crest level increase will be less than 0.3 meters; Wave action will be low.
Wapah area	NW (314)	22	Oak Lake north side community	NW (333)	16		
Dolly Creek area	N (341)	21	Lake St. Martin north side	NW (320)	17	No Alert	Wind set-up and wave action are predicted to be light.
Mathesons Point	N (344)	19	Lake St. Martin west side	N (358)	16		
Steep rock	N (347)	18	Lake St. Martin southwest side	N (358)	16	No Data	Wind effect data not available.
Fairford area	N (5)	15	Lake St. Martin south Side	N (358)	19		

**Note: All water levels labeled within the lakes are current wind eliminated lake levels provided in meters**

# Manitoba Lake Wind Effect Forecast for November 22 PM, 2023



Location	Ave.Dir.from North (degree)	Ave. Speed (km/h)	Location	Ave.Dir.from North (degree)	Ave. Speed (km/h)	Wind Effect Alert Categories	
Dauphin Lake	N (344)	26	Manipogo area	N (339)	27	Severe	Crest level increase will be greater than 1.5 meters; Wave action will be very significant and forceful.
MB Lake west side - Sandy Bay	N (342)	33	Crane River area	NW (336)	24		
MB Lake south side - Twin Beaches	N (339)	35	Wpg Lake - Victoria Beach	N (343)	40	High	Crest level increase will be in a range 0.9 ~ 1.5 meters; Wave action will be significant.
MB Lake middle - Vogar/The Narrows	N (340)	31	Wpg Lake - Gimli Beach	N (341)	30		
MB Lake east side - Lundar Beach	N (340)	29	Wpg Lake - Alberta Beach	N (343)	34	Moderate-High	Crest level increase will be in a range 0.6 ~ 0.9 meters; Wave action will be considerable.
Northeast 1	NW (337)	19	Wpg Lake - O'Hanly	N (344)	32		
Northeast 2	NW (337)	21	Wpg Lake south side	N (344)	38	Moderate	Crest level increase will be in a range 0.3 ~ 0.6 meters; Wave action will be moderate.
Guynesmer	NW (337)	27	Lake Winnipegosis south side	N (341)	26		
The Bluff	N (339)	29	Oak Lake east side community	N (350)	20	Low	Crest level increase will be less than 0.3 meters; Wave action will be low.
Wapah area	N (339)	32	Oak Lake north side community	N (350)	20		
Dolly Creek area	N (339)	30	Lake St. Martin north side	N (341)	20	No Alert	Wind set-up and wave action are predicted to be light.
Mathesons Point	N (339)	26	Lake St. Martin west side	N (339)	19		
Steep rock	N (338)	24	Lake St. Martin southwest side	N (339)	19	No Data	Wind effect data not available.
Fairford area	NW (337)	19	Lake St. Martin south Side	N (341)	22		

**Note: All water levels labeled within the lakes are current wind eliminated lake levels provided in meters**