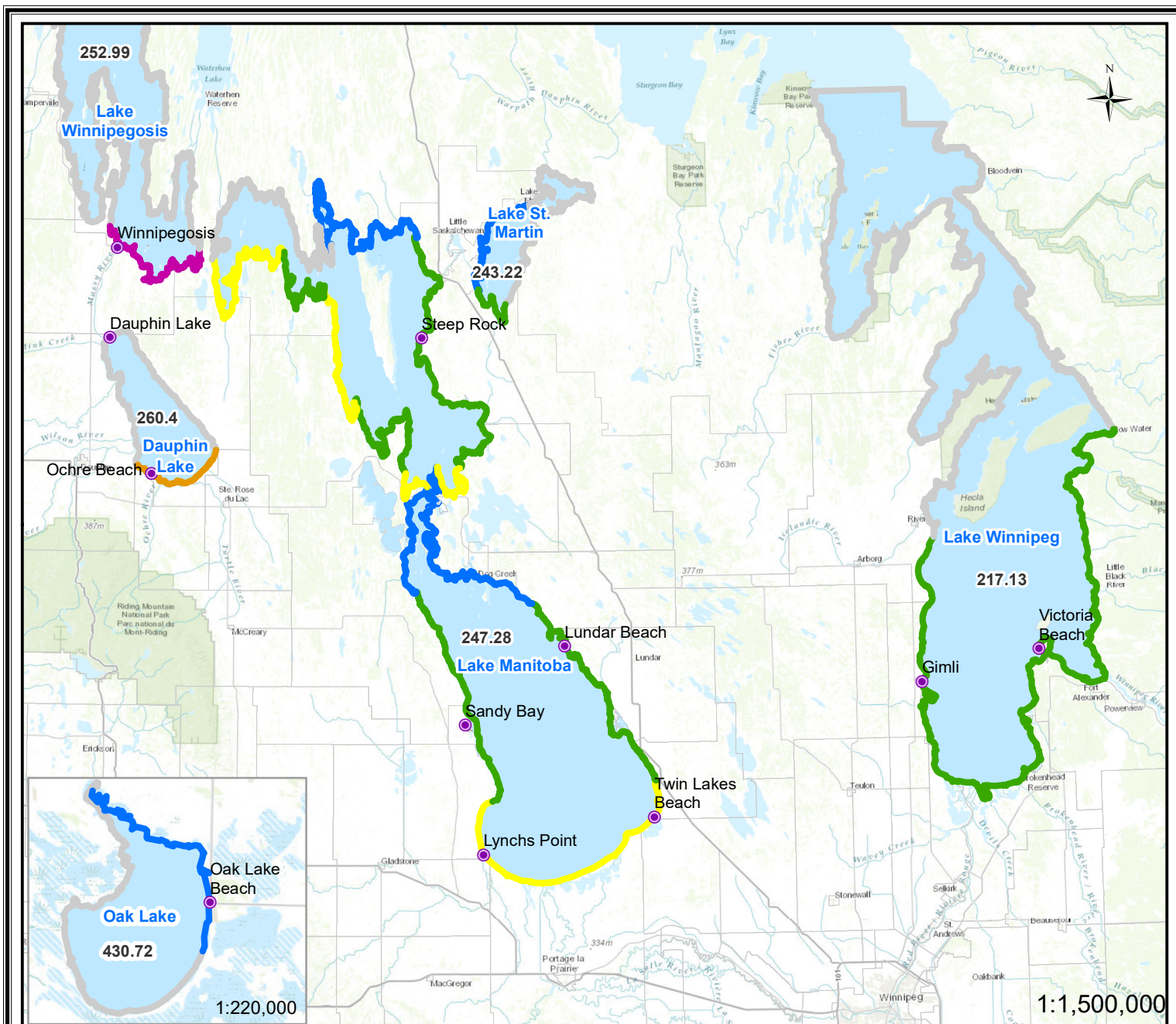


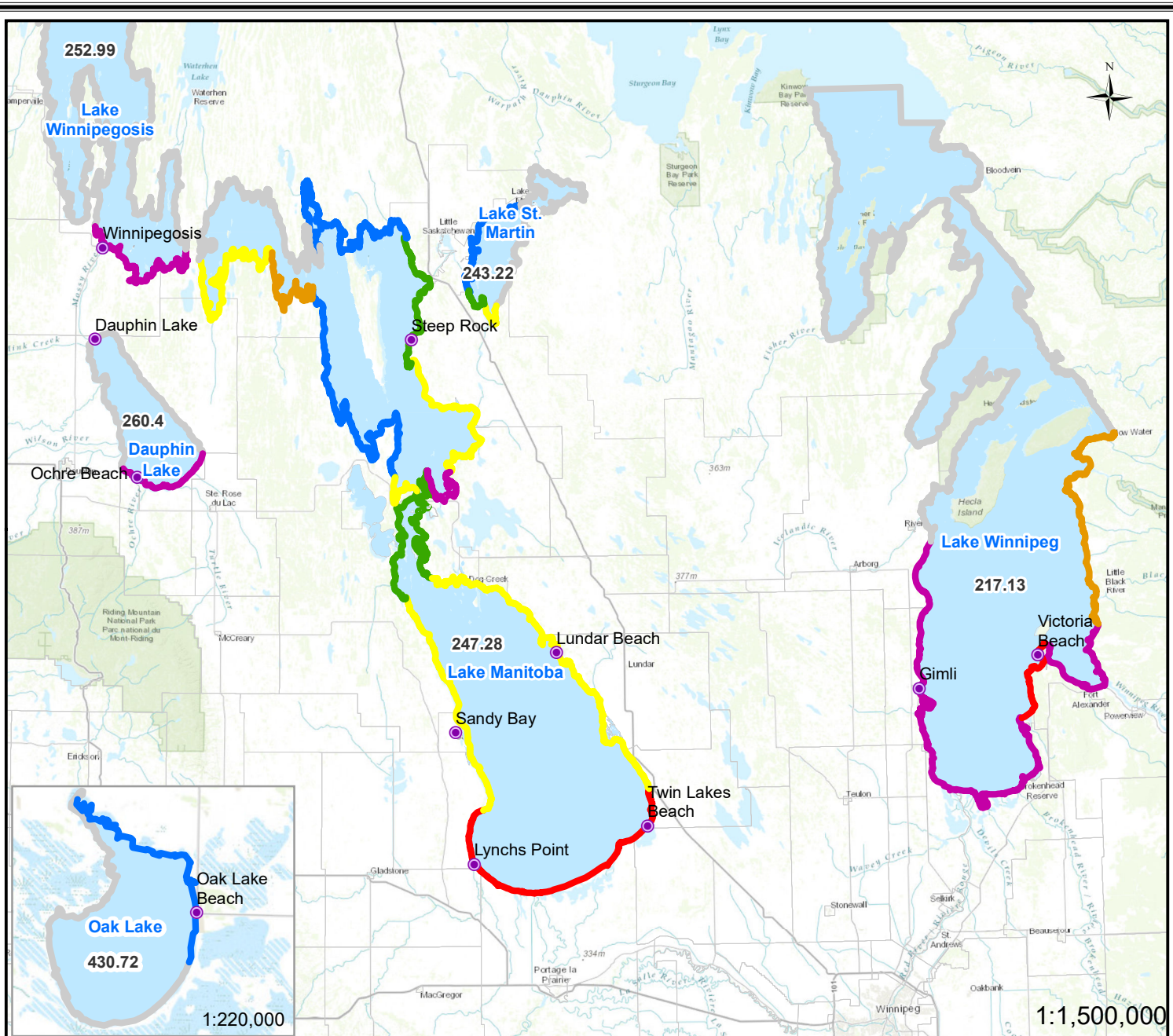
Manitoba Lake Wind Effect Forecast for December 8 AM, 2023



Location	Ave.Dir.from North (degree)	Ave. Speed (km/h)	Location	Ave.Dir.from North (degree)	Ave. Speed (km/h)	Wind Effect Alert Categories	
Dauphin Lake	N (345)	35	Manipogo area	N (348)	30	Severe	Crest level increase will be greater than 1.5 meters; Wave action will be very significant and forceful.
MB Lake west side - Sandy Bay	N (346)	33	Crane River area	N (351)	27		
MB Lake south side - Twin Beaches	N (350)	29	Wpg Lake - Victoria Beach	NE (51)	16	High	Crest level increase will be in a range 0.9 ~ 1.5 meters; Wave action will be significant.
MB Lake middle - Vogar/The Narrows	N (349)	28	Wpg Lake - Gimli Beach	NE (34)	15		
MB Lake east side - Lundar Beach	N (355)	23	Wpg Lake - Alberta Beach	NE (63)	12	Moderate-High	Crest level increase will be in a range 0.6 ~ 0.9 meters; Wave action will be considerable.
Northend 1	N (358)	23	Wpg Lake - O'Hanly	NE (59)	12		
Northend 2	N (354)	23	Wpg Lake south side	NE (47)	16	Moderate	Crest level increase will be in a range 0.3 ~ 0.6 meters; Wave action will be moderate.
Guynemer	N (351)	32	Lake Winnipegosis south side	N (348)	36		
The Bluff	N (352)	36	Oak Lake east side community	NW (331)	27	Low	Crest level increase will be less than 0.3 meters; Wave action will be low.
Wapah area	N (352)	34	Oak Lake north side community	NW (331)	27		
Dolly Creek area	N (352)	31	Lake St. Martin north side	N (2)	25	No Alert	Wind set-up and wave action are predicted to be light.
Mathesons Point	N (356)	27	Lake St. Martin west side	N (1)	24		
Steep rock	N (357)	28	Lake St. Martin southwest side	N (1)	24	No Data	Wind effect data not available.
Fairford area	N (358)	23	Lake St. Martin south Side	N (1)	27		

Note: All water levels labeled within the lakes are current wind eliminated lake levels provided in meters

Manitoba Lake Wind Effect Forecast for December 8 PM, 2023



Location	Ave.Dir.from North (degree)	Ave. Speed (km/h)	Location	Ave.Dir.from North (degree)	Ave. Speed (km/h)	Wind Effect Alert Categories	
Dauphin Lake	N (339)	40	Manipogo area	NW (336)	40	Severe	Crest level increase will be greater than 1.5 meters; Wave action will be very significant and forceful.
MB Lake west side - Sandy Bay	NW (335)	54	Crane River area	NW (332)	36		
MB Lake south side - Twin Beaches	NW (335)	57	Wpg Lake - Victoria Beach	NW (337)	46	High	Crest level increase will be in a range 0.9 ~ 1.5 meters; Wave action will be significant.
MB Lake middle - Vogar/The Narrows	NW (335)	48	Wpg Lake - Gimli Beach	NW (336)	41		
MB Lake east side - Lunder Beach	NW (337)	43	Wpg Lake - Alberta Beach	NW (337)	38	Moderate-High	Crest level increase will be in a range 0.6 ~ 0.9 meters; Wave action will be considerable.
Norhnd 1	NW (336)	28	Wpg Lake - O'Harly	N (338)	32		
Norhnd 2	NW (334)	30	Wpg Lake south side	NW (337)	48	Moderate	Crest level increase will be in a range 0.3 ~ 0.6 meters; Wave action will be moderate.
Guynemer	NW (331)	40	Lake Winnipegosis south side	N (340)	39		
The Bluff	NW (331)	44	Oak Lake east side community	NW (330)	37	Low	Crest level increase will be less than 0.3 meters; Wave action will be low.
Wapah area	NW (333)	47	Oak Lake north side community	NW (330)	37		
Dolly Creek area	NW (333)	46	Lake St. Martin north side	N (346)	30	No Alert	Wind set-up and wave action are predicted to be light.
Mathesons Point	N (338)	38	Lake St. Martin west side	N (342)	28		
Steep rock	NW (335)	35	Lake St. Martin southwest side	N (342)	28	No Data	Wind effect data not available.
Fairford area	NW (336)	29	Lake St. Martin south Side	N (345)	34		

Note: All water levels labeled within the lakes are current wind eliminated lake levels provided in meters