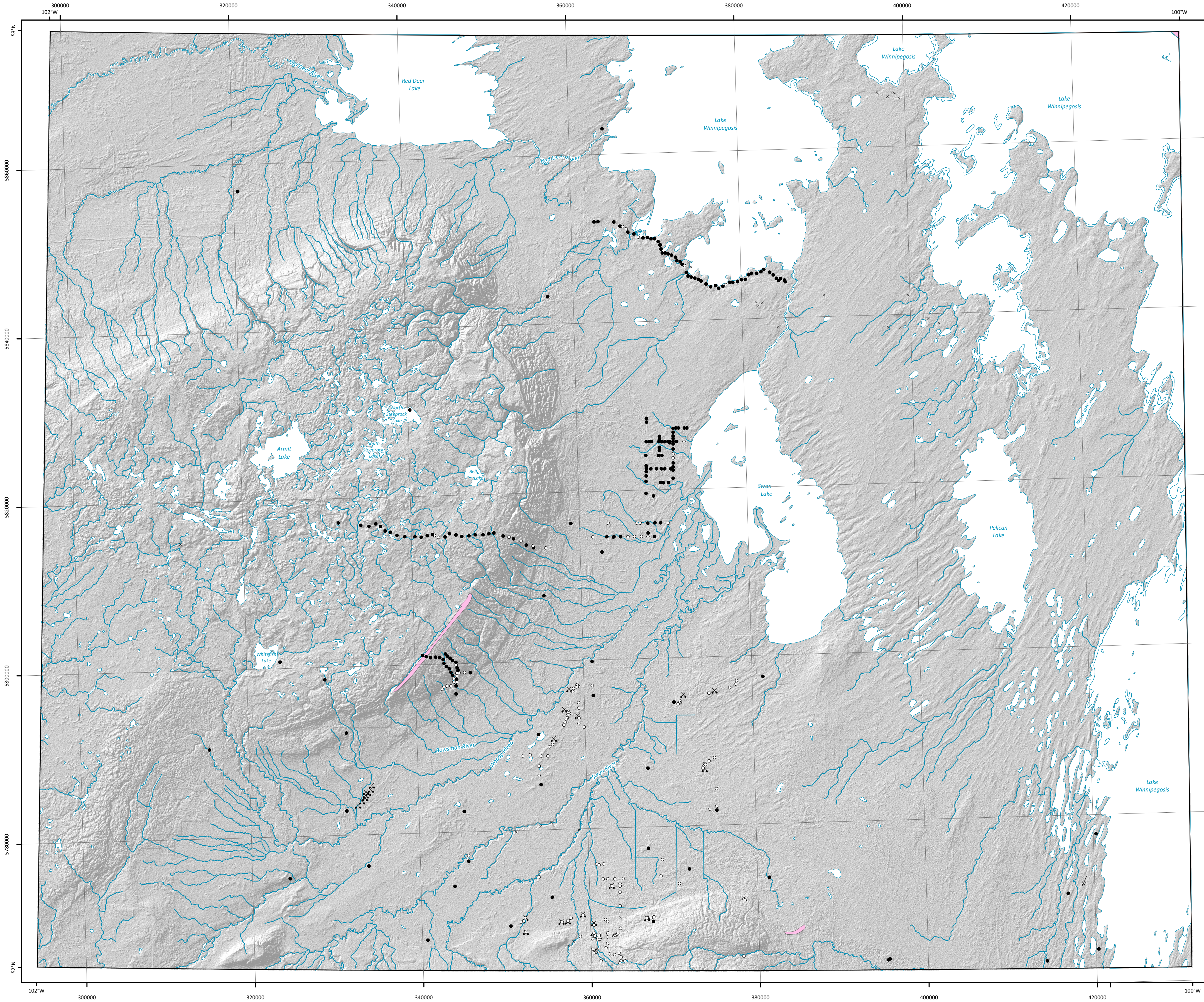




Surficial Geology Compilation Map SG-GF2022-63C



Legend

Symbols

- |          |                                  |     |   |
|----------|----------------------------------|-----|---|
| -----    | Beach ridge                      | ▲   | Delta                                       |
| →        | Crag-and-tail landform           | ▼   | Ice-contact delta                           |
| ---      | Crevasse ridge                   | ●   | Field site with sample                      |
| ---      | De Geer moraine                  | ○   | Field site without sample                   |
| →        | Drumlin                          | ✕   | Gravel pit                                  |
| ---      | Drumlinoid ridge or fluting      | ⊗   | Kame  |
| ---      | Dune                             | ⊗   | Kettle                                      |
| >>>>>>>  | Esker, direction known           | ↓   | Mass movement                               |
| <<<<<<<< | Esker, direction unknown         | ⬆   | Mine  |
| →→→→→    | Esker, washed, direction known   | ×   | Outcrop                                     |
| <<<<<<<< | Esker, washed, direction unknown | †   | Roche moutonnée                             |
| ---      | Iceberg scour                    | Ⓢ   | Sample analysis results (dating)            |
| →        | Major moraine                    | ↑   | Striae, direction known, poorly preserved   |
| +        | Meltwater channel                | ↑   | Striae, direction known, well preserved     |
| ---      | Meltwater channel corridor       | ↑   | Striae, direction unknown, poorly preserved |
| ---      | Minor moraine, undifferentiated  | ↑   | Striae, direction unknown, well preserved   |
| ---      | Rogen moraine (pristine)         | ⊞   | Thermokarst                                 |
| ---      | Rogen moraine (modified)         | ⊞   | Major moraine                               |
| ---      | Streamlined bedrock              | ... | Limit of mapping                            |
| ---      | Trimline (wave cut scarp)        |     |   |

To aid the reader, a shadow effect has been added to exaggerate the topographic relief based on data from the Shuttle Radar Topography Mission Digital Elevation Model:

<sup>1</sup> U.S. Geological Survey 2014: USGS EROS archive - digital elevation - Shuttle Radar Topography Mission (SRTM) 1 arc-second global; U.S. Geological Survey, 30 m cell, zipped hgt format, URL <<https://doi.org/10.5066/F7PR7TFT>> [December 2014].

Surficial Geology Compilation Map SG-GF2022-63C

Surficial point and line features of the Swan Lake map sheet (NTS 63C), Manitoba

Compilation and updating by M.S. Gauthier

GIS/Cartography by G.R. Keller and A. Santucci

Suggested reference:

Gauthier, M.S. 2022: Surficial point and line features of the Swan Lake map sheet (NTS 63C), Manitoba; Manitoba Natural Resources and Northern Development, Manitoba Geological Survey, Surficial Geology Compilation Map SG-GF2022-63C, scale 1:250 000.

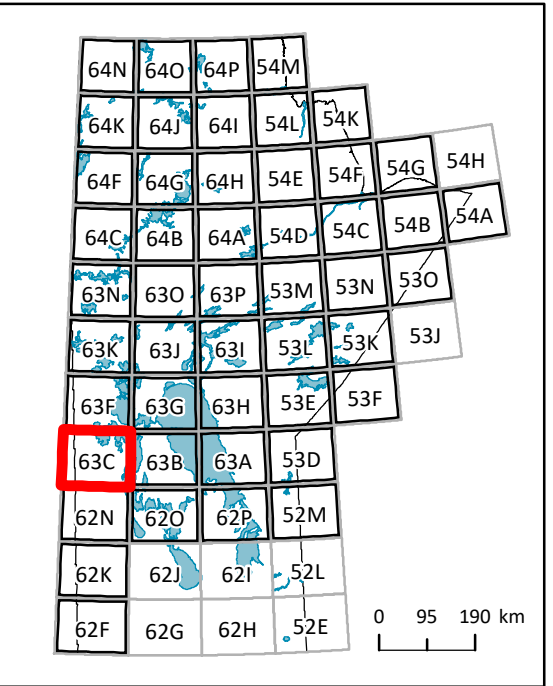
Accompanying document:

Gauthier, M.S., Santucci, A. and Keller, G.R. 2022: Digital compilation of surficial point and line features for Manitoba, including ice-flow data; Manitoba Natural Resources and Northern Development, Manitoba Geological Survey, GeoFile 1-2022, URL <<https://www.manitoba.ca/iem/info/libmin/geofile1.zip>> [February 2022].

Data can be viewed, queried and downloaded from the GIS Map Gallery at <https://www.manitoba.ca/iem/geo/gis/index.html> (Geoscience).

Note: Data presented at 1:250 000 scale; some data compiled at scales as detailed as 1:30 000. For areas with very detailed data, use of the GIS Map Gallery is recommended. Updated November 2021; supersedes previous version.

Location Map



Published by:  
Manitoba Natural Resources and Northern Development  
Manitoba Geological Survey, 2022

Copies of this map can be obtained from:  
Manitoba Natural Resources and Northern Development  
Manitoba Geological Survey, Publication Sales  
360-1395 Ellice Avenue  
Winnipeg MB R3G 3P2  
Canada

Phone: 204-945-6569  
Toll free: 1-800-223-5215

Email: [minesinfo@gov.mb.ca](mailto:minesinfo@gov.mb.ca)

Available for free download at  
<https://www.manitoba.ca/minerals>

