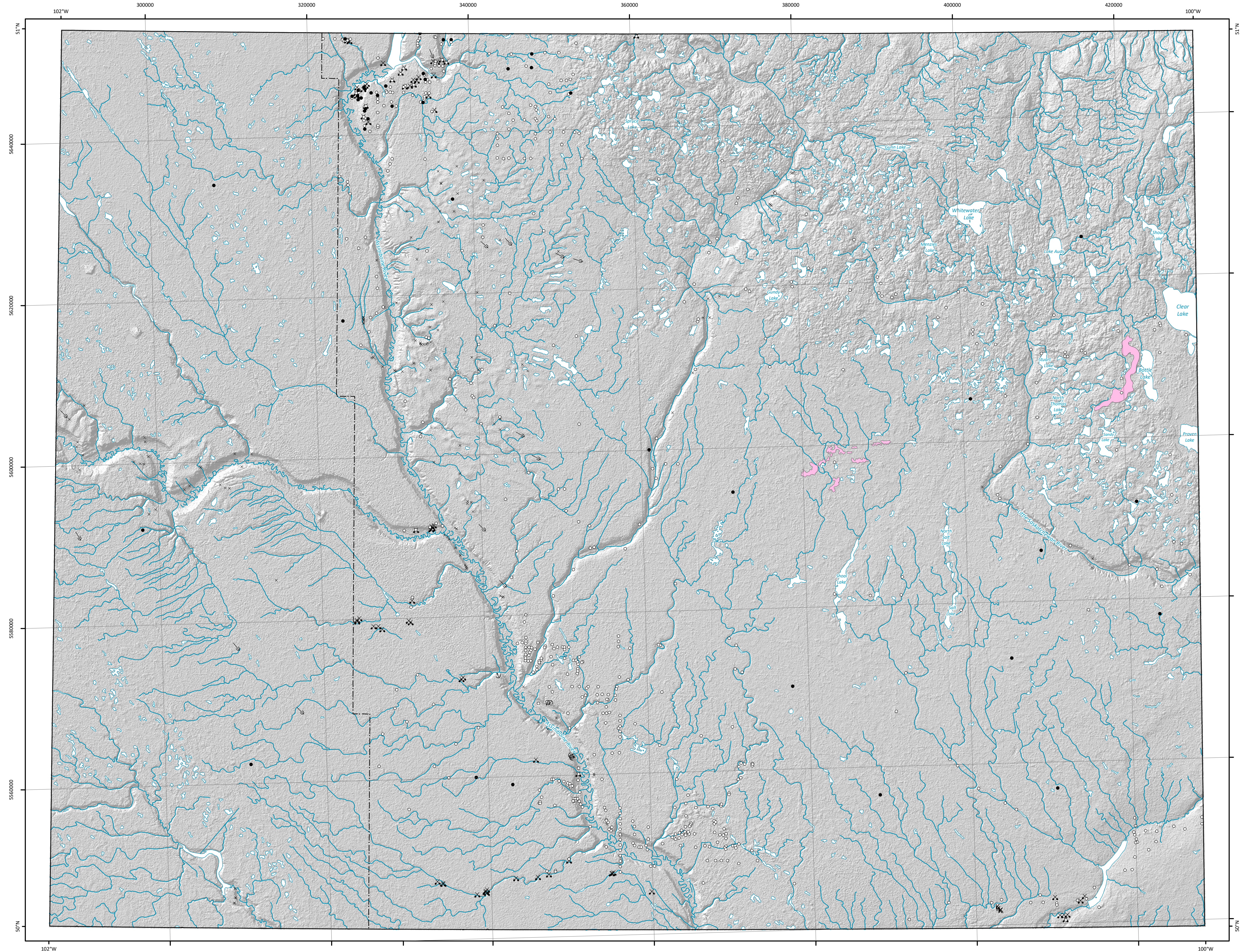




## Surficial Geology Compilation Map SG-GF2022-62K



### Legend

#### Symbols

- |                                  |   |
|----------------------------------|---|
| Beach ridge                      | Delta                                       |
| Crag-and-tail landform           | Ice-contact delta                           |
| Crevasse ridge                   | Field site with sample                      |
| De Geer moraine                  | Field site without sample                   |
| Drumlin                          | Gravel pit                                  |
| Drumlinoid ridge or fluting      | Kame  |
| Dune                             | Kettle                                      |
| Esker, direction known           | Mass movement                               |
| Esker, direction unknown         | Mine  |
| Esker, washed, direction known   | Outcrop                                     |
| Esker, washed, direction unknown | Roche moutonnée                             |
| Iceberg scour                    | Sample analysis results (dating)            |
| Major moraine                    | Striae, direction known, poorly preserved   |
| Meltwater channel                | Striae, direction known, well preserved     |
| Meltwater channel corridor       | Striae, direction unknown, poorly preserved |
| Minor moraine, undifferentiated  | Striae, direction unknown, well preserved   |
| Rogen moraine (pristine)         | Thermokarst                                 |
| Rogen moraine (modified)         |   |
| Streamlined bedrock              | Major moraine                               |
| Trimline (wave cut scarp)        | Limit of mapping                            |

To aid the reader, a shadow effect has been added to exaggerate the topographic relief based on data from the Shuttle Radar Topography Mission Digital Elevation Model:

<sup>1</sup> U.S. Geological Survey 2014: USGS EROS archive - digital elevation - Shuttle Radar Topography Mission (SRTM) 1 arc-second global; U.S. Geological Survey, 30 m cell, zipped hgt format, URL <<https://doi.org/10.5066/F7PR7TFT>> [December 2014].

### Surficial Geology Compilation Map SG-GF2022-62K

## Surficial point and line features of the Riding Mountain map sheet (NTS 62K), Manitoba

Compilation and updating by M.S. Gauthier

GIS/Cartography by G.R. Keller and A. Santucci

#### Suggested reference:

Gauthier, M.S. 2022: Surficial point and line features of the Riding Mountain map sheet (NTS 62K), Manitoba; Manitoba Natural Resources and Northern Development, Manitoba Geological Survey, Surficial Geology Compilation Map SG-GF2022-62K, scale 1:250 000.

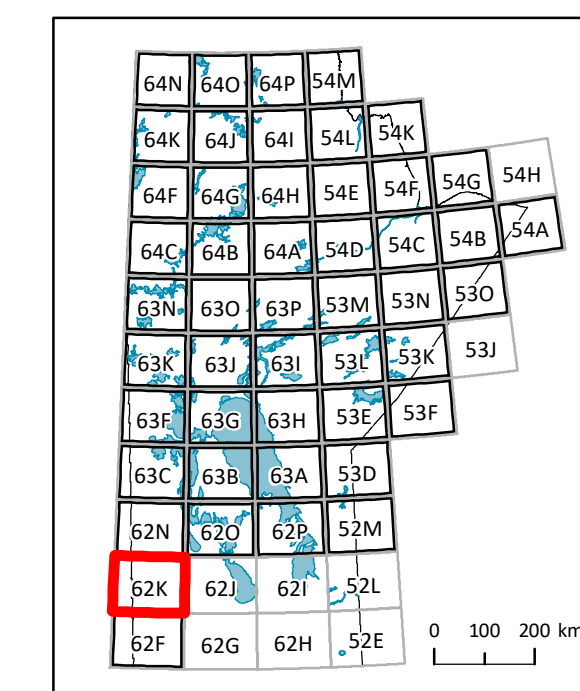
#### Accompanying document:

Gauthier, M.S., Santucci, A. and Keller, G.R. 2022: Digital compilation of surficial point and line features for Manitoba, including ice-flow data; Manitoba Natural Resources and Northern Development, Manitoba Geological Survey, GeoFile 1-2022, URL <<https://www.manitoba.ca/iem/info/libmin/geofile1.zip>> [February 2022].

Data can be viewed, queried and downloaded from the GIS Map Gallery at <https://www.manitoba.ca/iem/geo/gis/index.html> (Geoscience).

Note: Data presented at 1:250 000 scale; some data compiled at scales as detailed as 1:30 000. For areas with very detailed data, use of the GIS Map Gallery is recommended. Updated November 2021; supersedes previous version.

#### Location Map



Published by:  
Manitoba Natural Resources and Northern Development  
Manitoba Geological Survey, 2022

Copies of this map can be obtained from:  
Manitoba Natural Resources and Northern Development  
Manitoba Geological Survey, Publication Sales  
360-1395 Ellice Avenue  
Winnipeg MB R3G 3P2  
Canada

Phone: 204-945-6569  
Toll free: 1-800-223-5215

Email: [minesinfo@gov.mb.ca](mailto:minesinfo@gov.mb.ca)

Available for free download at  
<https://www.manitoba.ca/minerals>

UTM Zone 14, NAD83

Digital elevation model from NASA Shuttle Radar Topography Mission (SRTM) data<sup>1</sup>  
100X vertical exaggeration

Project Number: MGS2010\_001

Scale 1:250 000

