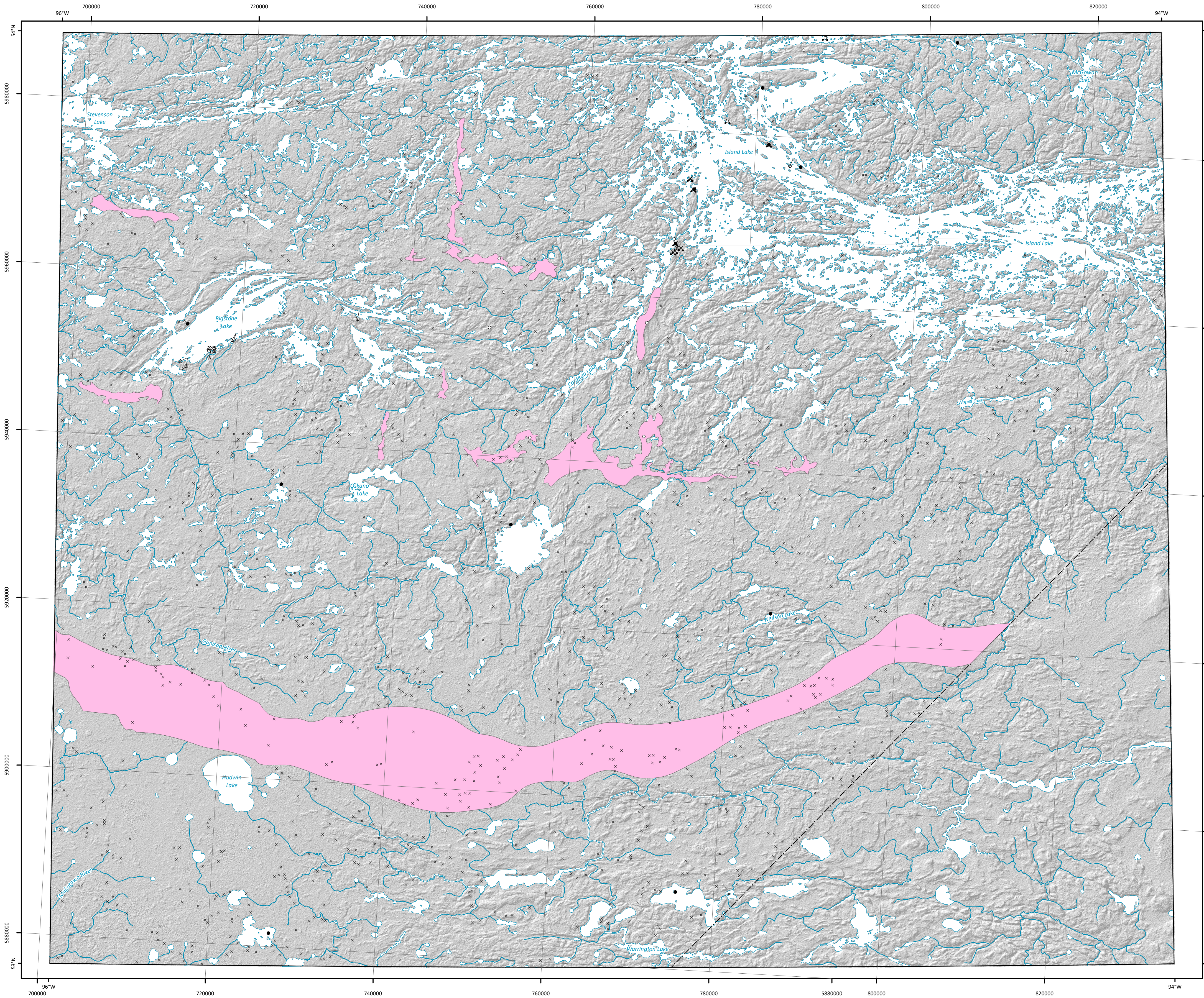




Surficial Geology Compilation Map SG-GF2022-53E



Legend

Symbols

- | | | | |
|---------|----------------------------------|-----|---|
| ----- | Beach ridge | ▲ | Delta |
| → | Crag-and-tail landform | ▼ | Ice-contact delta |
| --- | Crevasse ridge | ● | Field site with sample |
| --- | De Geer moraine | ○ | Field site without sample |
| → | Drumlin | ⊗ | Gravel pit |
| --- | Drumlinoid ridge or fluting | ⊗ | Kame |
| --- | Dune | K | Kettle |
| >>>>>>> | Esker, direction known | ↓ | Mass movement |
| <<<<<<< | Esker, direction unknown | ⚡ | Mine |
| →→→→→ | Esker, washed, direction known | × | Outcrop |
| <<<<<<< | Esker, washed, direction unknown | † | Roche moutonnée |
| --- | Iceberg scour | Ⓢ | Sample analysis results (dating) |
| → | Major moraine | ↑ | Striae, direction known, poorly preserved |
| --- | Meltwater channel | ↑ | Striae, direction known, well preserved |
| --- | Meltwater channel corridor | ↑ | Striae, direction unknown, poorly preserved |
| --- | Minor moraine, undifferentiated | ↑ | Striae, direction unknown, well preserved |
| --- | Rogen moraine (pristine) | ⊞ | Thermokarst |
| --- | Rogen moraine (modified) | ⊞ | Major moraine |
| --- | Streamlined bedrock | ... | Limit of mapping |
| --- | Trimline (wave cut scarp) | | |

To aid the reader, a shadow effect has been added to exaggerate the topographic relief based on data from the Shuttle Radar Topography Mission Digital Elevation Model:

¹ U.S. Geological Survey 2014: USGS EROS archive - digital elevation - Shuttle Radar Topography Mission (SRTM) 1 arc-second global; U.S. Geological Survey, 30 m cell, zipped hgt format, URL <<https://doi.org/10.5066/F7PR7TFT>> [December 2014].

Surficial Geology Compilation Map SG-GF2022-53E

Surficial point and line features of the Island Lake map sheet (NTS 53E), Manitoba

Compilation and updating by M.S. Gauthier

GIS/Cartography by G.R. Keller and A. Santucci

Suggested reference:

Gauthier, M.S. 2022: Surficial point and line features of the Island Lake map sheet (NTS 53E), Manitoba; Manitoba Natural Resources and Northern Development, Manitoba Geological Survey, Surficial Geology Compilation Map SG-GF2022-53E, scale 1:250 000.

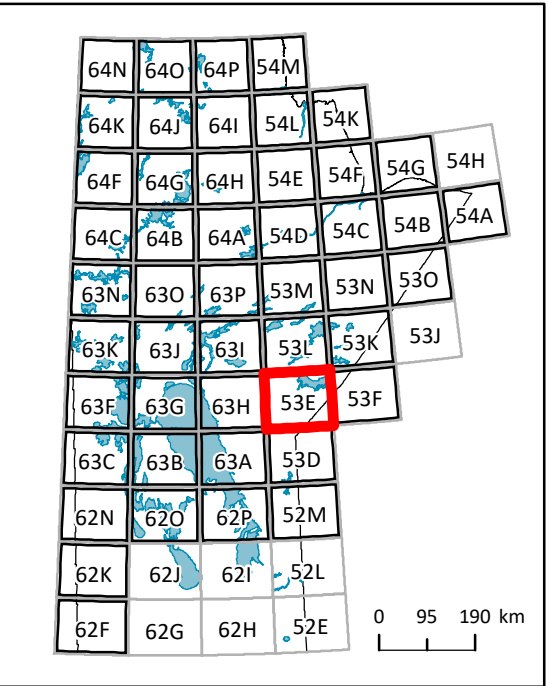
Accompanying document:

Gauthier, M.S., Santucci, A. and Keller, G.R. 2022: Digital compilation of surficial point and line features for Manitoba, including ice-flow data; Manitoba Natural Resources and Northern Development, Manitoba Geological Survey, GeoFile 1-2022, URL <<https://www.manitoba.ca/ien/info/libmin/geofile1.zip>> [February 2022].

Data can be viewed, queried and downloaded from the GIS Map Gallery at <https://www.manitoba.ca/ien/geo/gis/index.html> (Geoscience).

Note: Data presented at 1:250 000 scale; some data compiled at scales as detailed as 1:30 000. For areas with very detailed data, use of the GIS Map Gallery is recommended. Updated November 2021; supersedes previous version.

Location Map



Published by:
Manitoba Natural Resources and Northern Development
Manitoba Geological Survey, 2022

Copies of this map can be obtained from:
Manitoba Natural Resources and Northern Development
Manitoba Geological Survey, Publication Sales
360-1395 Ellice Avenue
Winnipeg MB R3G 3P2
Canada

Phone: 204-945-6569
Toll free: 1-800-223-5215

Email: minesinfo@gov.mb.ca

Available for free download at
<https://www.manitoba.ca/minerals>

