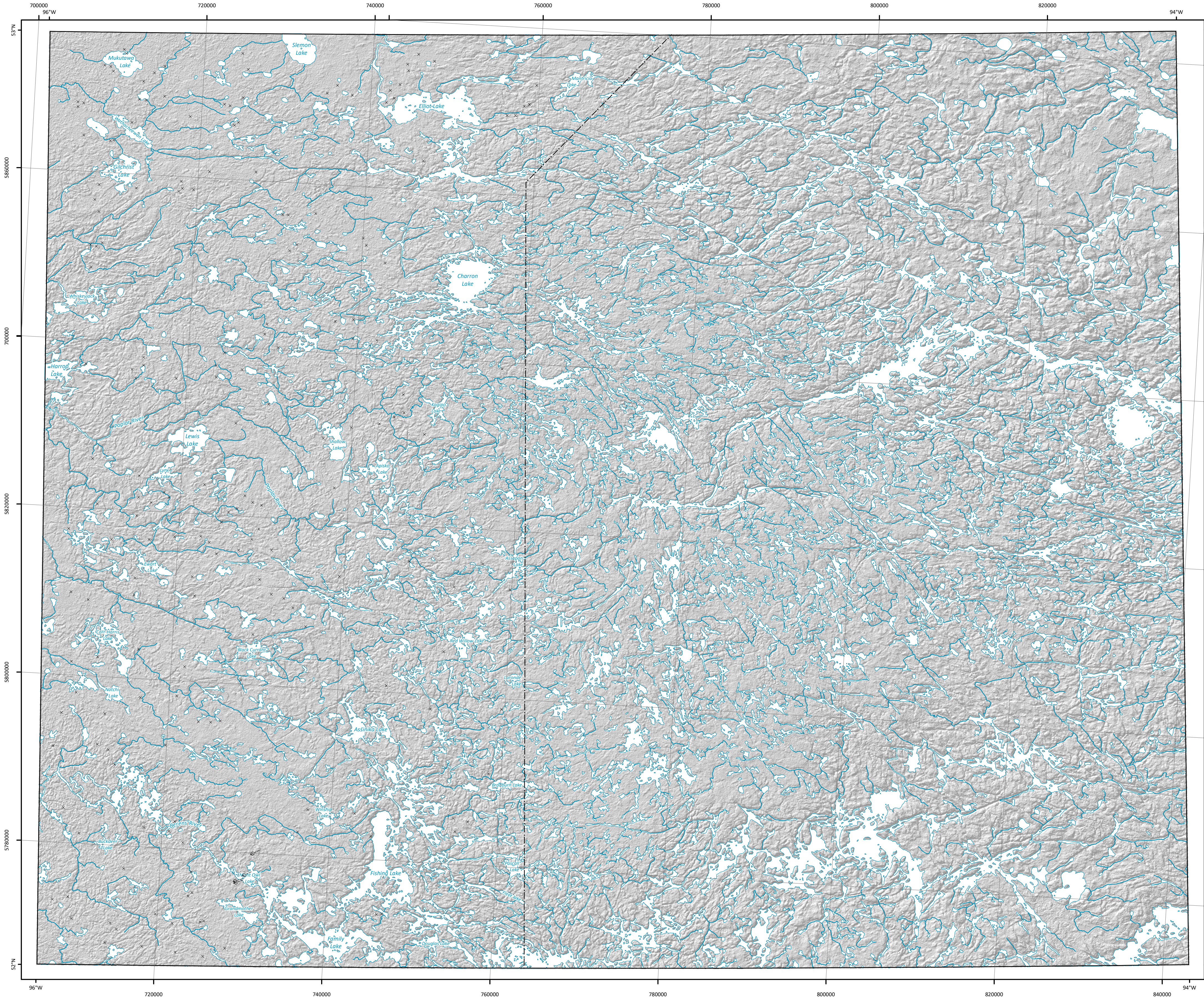




Surficial Geology Compilation Map SG-GF2022-53D



Legend

Symbols

- |  |                                   |  |   |
|--|-----------------------------------|--|---|
|  | Beach ridge                       |  | Delta                                       |
|  | Crag-and-tail landform            |  | Ice-contact delta                           |
|  | Crevasse ridge                    |  | Field site with sample                      |
|  | De Geer moraine                   |  | Field site without sample                   |
|  | Drumlin                           |  | Gravel pit                                  |
|  | Drumlinoid ridge or fluting       |  | Kame  |
|  | Dune                              |  | Kettle                                      |
|  | Escher, direction known           |  | Mass movement                               |
|  | Escher, direction unknown         |  | Mine  |
|  | Escher, washed, direction known   |  | Outcrop                                     |
|  | Escher, washed, direction unknown |  | Roche moutonnée                             |
|  | Iceberg scour                     |  | Sample analysis results (dating)            |
|  | Major moraine                     |  | Striae, direction known, poorly preserved   |
|  | Meltwater channel                 |  | Striae, direction known, well preserved     |
|  | Meltwater channel corridor        |  | Striae, direction unknown, poorly preserved |
|  | Minor moraine, undifferentiated   |  | Striae, direction unknown, well preserved   |
|  | Rogen moraine (pristine)          |  | Thermokarst                                 |
|  | Rogen moraine (modified)          |  | Major moraine                               |
|  | Streamlined bedrock               |  | Limit of mapping                            |
|  | Trimline (wave cut scarp)         |  |   |

To aid the reader, a shadow effect has been added to exaggerate the topographic relief based on data from the Shuttle Radar Topography Mission Digital Elevation Model:

<sup>1</sup> U.S. Geological Survey 2014: USGS EROS archive - digital elevation - Shuttle Radar Topography Mission (SRTM) 1 arc-second global; U.S. Geological Survey, 30 m cell, zipped hgt format, URL <<https://doi.org/10.5066/F7PR7TFT>> [December 2014].

Surficial Geology Compilation Map SG-GF2022-53D

Surficial point and line features of the Deer Lake map sheet (NTS 53D), Manitoba

Compilation and updating by M.S. Gauthier

GIS/Cartography by G.R. Keller and A. Santucci

Suggested reference:

Gauthier, M.S. 2022: Surficial point and line features of the Deer Lake map sheet (NTS 53D), Manitoba; Manitoba Natural Resources and Northern Development, Manitoba Geological Survey, Surficial Geology Compilation Map SG-GF2022-53D, scale 1:250 000.

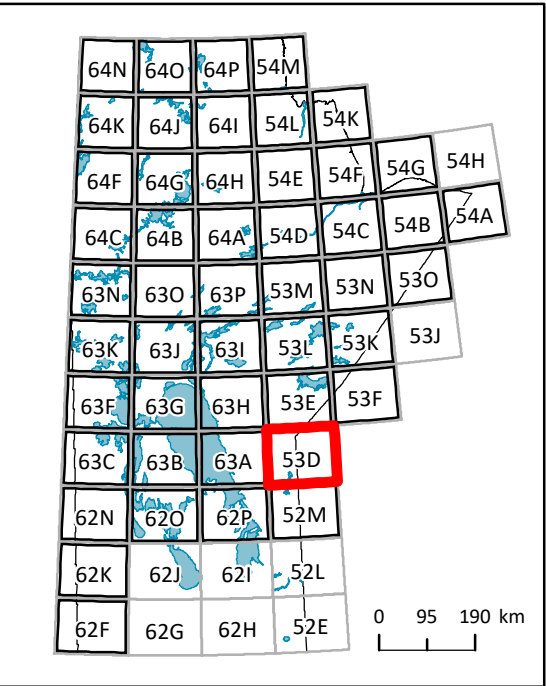
Accompanying document:

Gauthier, M.S., Santucci, A. and Keller, G.R. 2022: Digital compilation of surficial point and line features for Manitoba, including ice-flow data; Manitoba Natural Resources and Northern Development, Manitoba Geological Survey, GeoFile 1-2022, URL <<https://www.manitoba.ca/iem/info/libmin/geofile1.zip>> [February 2022].

Data can be viewed, queried and downloaded from the GIS Map Gallery at <https://www.manitoba.ca/iem/geo/gis/index.html> (Geoscience).

Note: Data presented at 1:250 000 scale; some data compiled at scales as detailed as 1:30 000. For areas with very detailed data, use of the GIS Map Gallery is recommended. Updated November 2021; supersedes previous version.

Location Map



Published by:  
Manitoba Natural Resources and Northern Development  
Manitoba Geological Survey, 2022

Copies of this map can be obtained from:  
Manitoba Natural Resources and Northern Development  
Manitoba Geological Survey, Publication Sales  
360-1395 Ellice Avenue  
Winnipeg MB R3G 3P2  
Canada

Phone: 204-945-6569  
Toll free: 1-800-223-5215

Email: [minesinfo@gov.mb.ca](mailto:minesinfo@gov.mb.ca)

Available for free download at  
<https://www.manitoba.ca/minerals>

