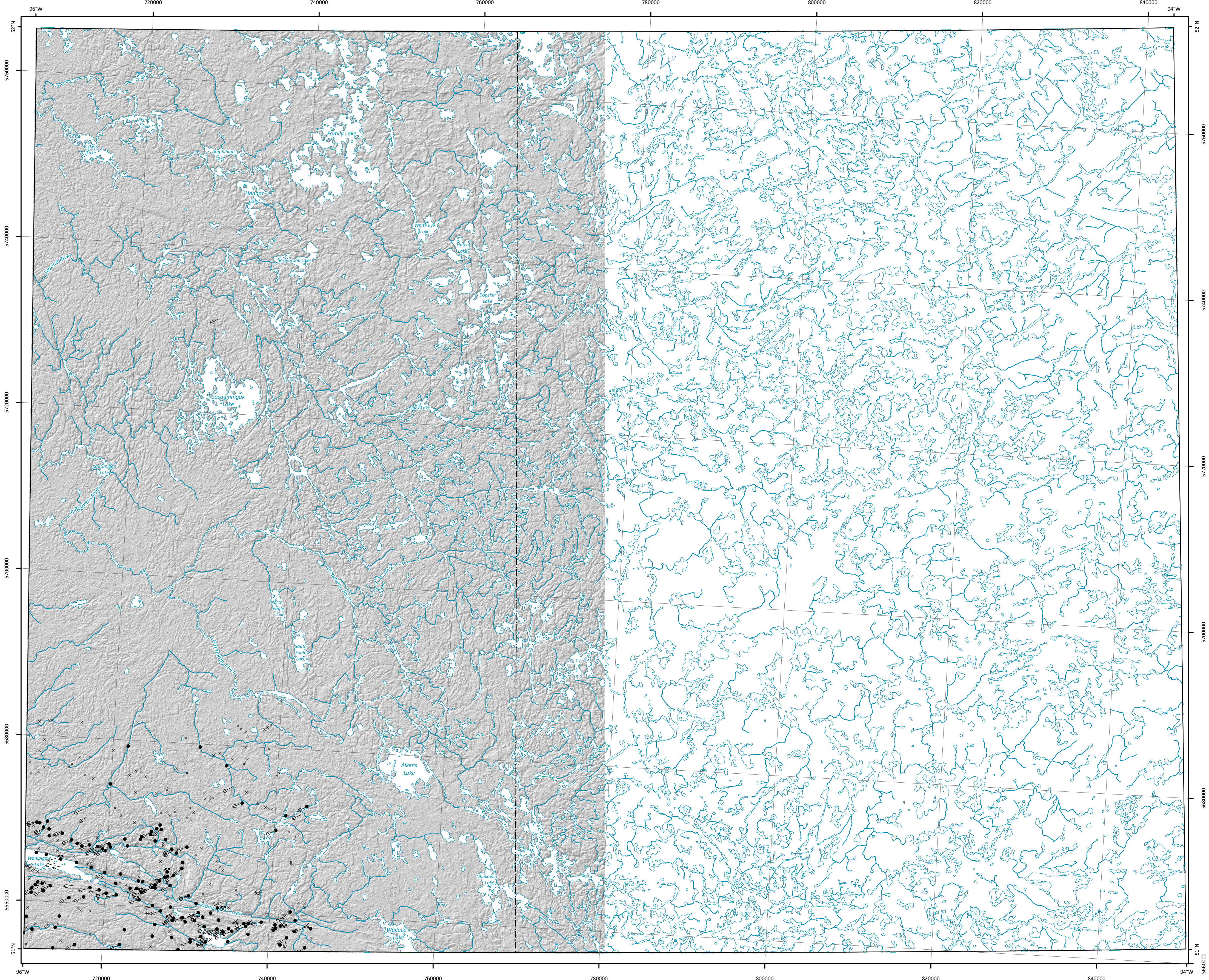




Surficial Geology Compilation Map SG-GF2022-52M



- Legend**
- Symbols**
- | | | | |
|--|----------------------------------|--|---|
| | Beach ridge | | Delta |
| | Crag-and-tail landform | | Ice-contact delta |
| | Crevasse ridge | | Field site with sample |
| | De Geer moraine | | Field site without sample |
| | Drumlin | | Gravel pit |
| | Drumlinoid ridge or fluting | | Kame |
| | Dune | | Kettle |
| | Esker, direction known | | Mass movement |
| | Esker, direction unknown | | Mine |
| | Esker, washed, direction known | | Outcrop |
| | Esker, washed, direction unknown | | Roche moutonnée |
| | Iceberg scour | | Sample analysis results (dating) |
| | Major moraine | | Striae, direction known, poorly preserved |
| | Meltwater channel | | Striae, direction known, well preserved |
| | Meltwater channel corridor | | Striae, direction unknown, poorly preserved |
| | Minor moraine, undifferentiated | | Striae, direction unknown, well preserved |
| | Rogen moraine (pristine) | | Thermokarst |
| | Rogen moraine (modified) | | Major moraine |
| | Streamlined bedrock | | Limit of mapping |
| | Trimline (wave cut scarp) | | |

To aid the reader, a shadow effect has been added to exaggerate the topographic relief based on data from the Shuttle Radar Topography Mission Digital Elevation Model:

¹ U.S. Geological Survey 2014: USGS EROS archive - digital elevation - Shuttle Radar Topography Mission (SRTM) 1 arc-second global; U.S. Geological Survey, 30 m cell, zipped hgt format, URL <<https://doi.org/10.5066/F7PR7TFT>> [December 2014].

Surficial Geology Compilation Map SG-GF2022-52M

Surficial point and line features of the Carroll Lake map sheet (NTS 52M), Manitoba

Compilation and updating by M.S. Gauthier

GIS/Cartography by G.R. Keller and A. Santucci

Suggested reference:

Gauthier, M.S. 2022: Surficial point and line features of the Carroll Lake map sheet (NTS 52M), Manitoba; Manitoba Natural Resources and Northern Development, Manitoba Geological Survey, Surficial Geology Compilation Map SG-GF2022-52M, scale 1:250 000.

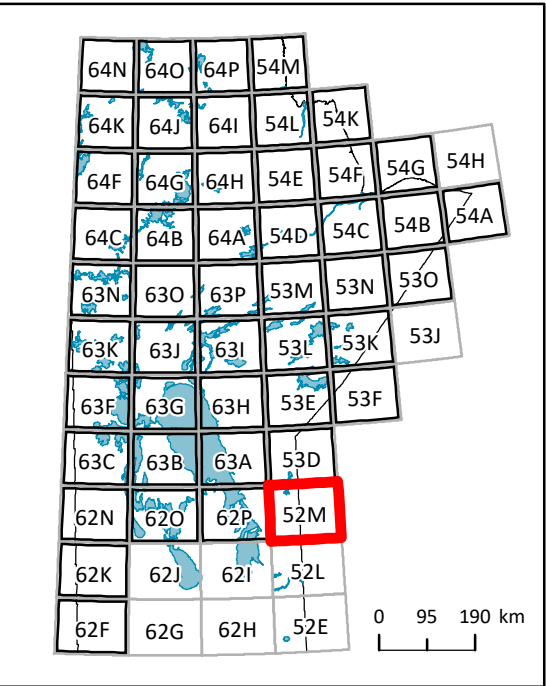
Accompanying document:

Gauthier, M.S., Santucci, A. and Keller, G.R. 2022: Digital compilation of surficial point and line features for Manitoba, including ice-flow data; Manitoba Natural Resources and Northern Development, Manitoba Geological Survey, GeoFile 1-2022, URL <<https://www.manitoba.ca/iem/info/libmin/geofile1.zip>> [February 2022].

Data can be viewed, queried and downloaded from the GIS Map Gallery at <https://www.manitoba.ca/iem/geo/gis/index.html> (Geoscience).

Note: Data presented at 1:250 000 scale; some data compiled at scales as detailed as 1:30 000. For areas with very detailed data, use of the GIS Map Gallery is recommended. Updated November 2021; supersedes previous version.

Location Map



Published by:
Manitoba Natural Resources and Northern Development
Manitoba Geological Survey, 2022

Copies of this map can be obtained from:
Manitoba Natural Resources and Northern Development
Manitoba Geological Survey, Publication Sales
360-1395 Ellice Avenue
Winnipeg MB R3G 3P2
Canada

Phone: 204-945-6569
Toll free: 1-800-223-5215

Email: minesinfo@gov.mb.ca

Available for free download at
<https://www.manitoba.ca/minerals>

