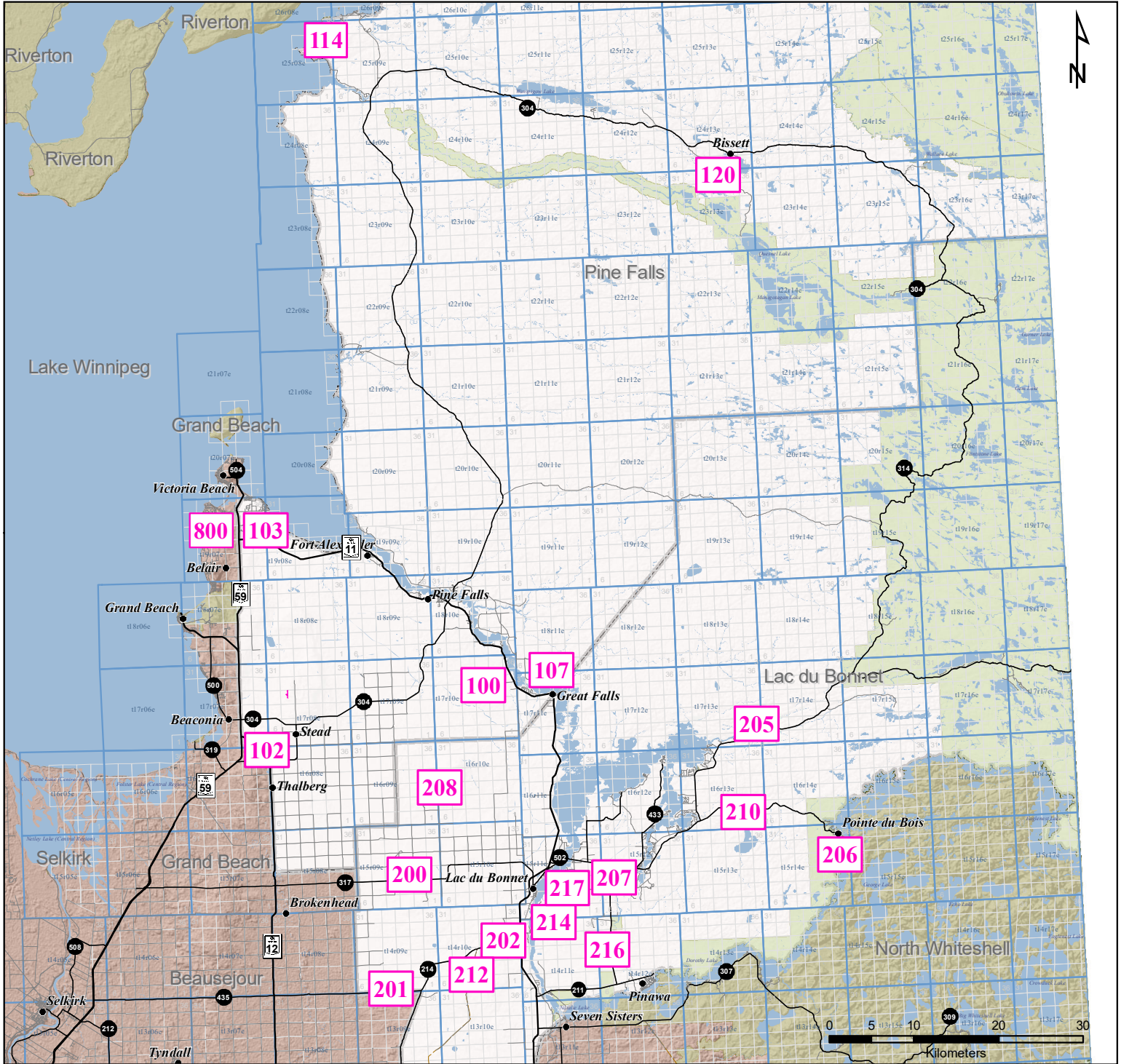
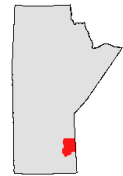


- LAC DU BONNET & PINE FALLS - Designated Cutting Areas

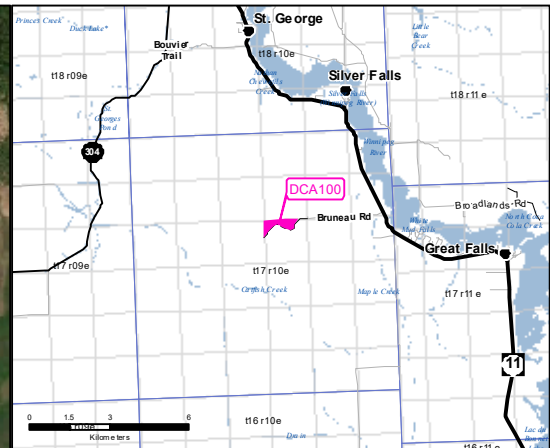
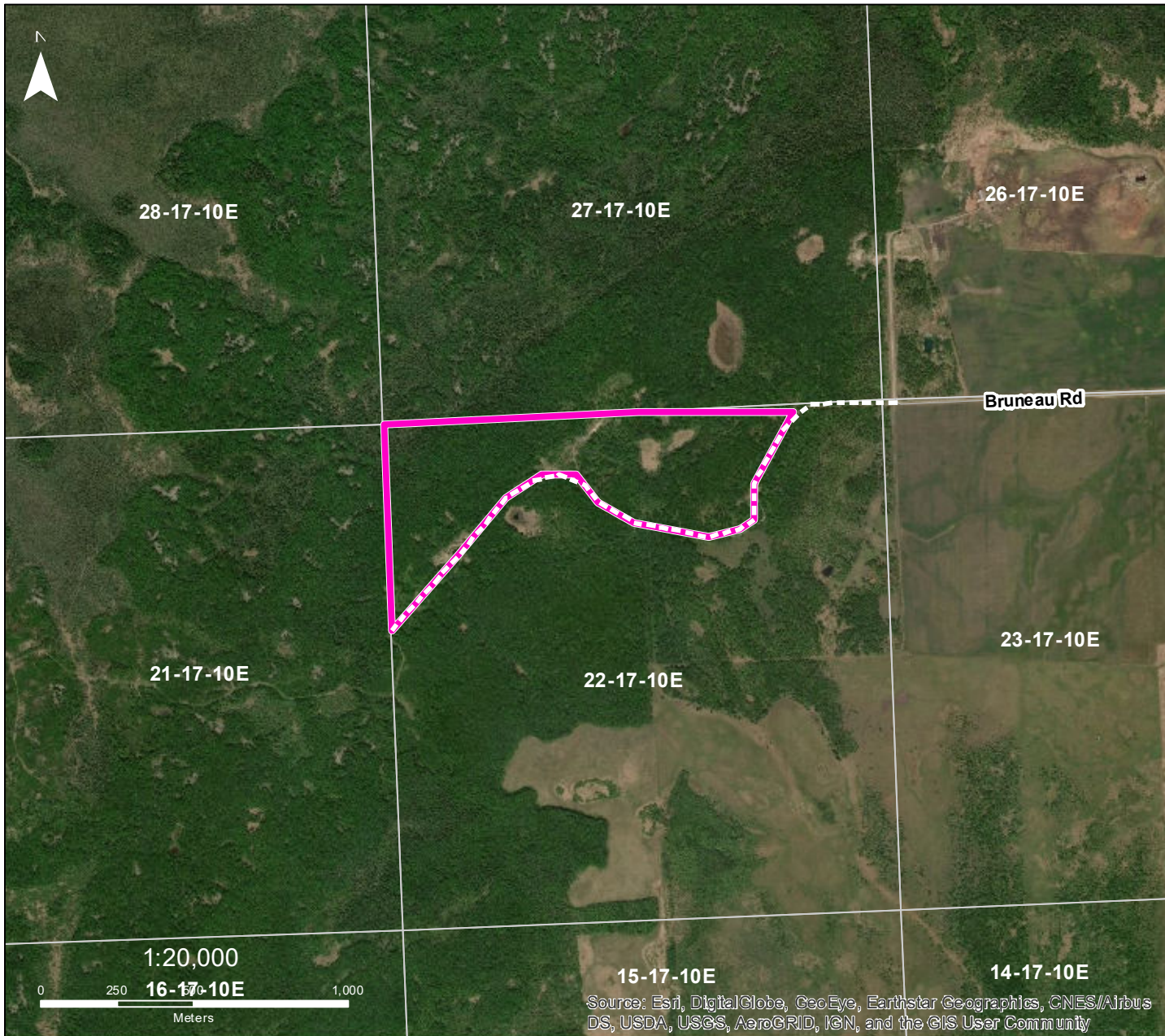


DISTRICT	DCA ID	PRODUCT	Season	Access Condition	Suggestion	Location
PINE FALLS	100	WB/TA Fuel Wood	Summer/Winter	Good/Poor	Truck/Snowmobile	Sec 22 - Twp 17 - Rge 10E
	101	JP/TA/WB Fuel Wood	Summer/Winter	Good/Poor	Truck/Snowmobile	Sec 29 - Twp 17 - Rge 8E
	102	TA/JP/WB Fuel Wood	Summer/Winter	Good/Poor	Truck/Snowmobile	Sec 36 - Twp 16 - Rge 7E
	103	JP Fuel Wood	Summer/Winter	Good/Poor	Truck/Snowmobile	Sec 24 - Twp 19 - Rge 7E
	107	TA/AS/BF Fuel Wood	All	Poor	Machine	Sec 4 - Twp 18 - Rge 11E
	114	JP/WB/TA Fuel Wood	Summer/Winter	Good	Truck/Snowmobile	Sec 25 - Twp 25 - Rge 8E
	120	TA/JP/TL Fuel Wood	Summer/Winter	Good/Fair	ATV/Snowmobile	Sec 34 - Twp 23 - Rge 13E
	200	BS/TA/JP Fuel Wood	Summer/Winter	Fair/Poor	Machine	Sec 15 - Twp 15 - Rge 9E
	201	BS/TL/TA Fuel wood	Summer/Winter	Poor	Machine	Sec 4 - Twp 14 - Rge 9E
	202	TA/BS/WB Fuel Wood	Summer/Winter	Poor	Machine	Sec 23 - Twp 14 - Rge 10E
LAC DU BONNET	205	TA Fuel Wood	Summer/Winter	Fair/Poor	Machine	Sec 12 - Twp 17 - Rge 13E
	206	JP/TA Fuel Wood	Summer/Winter	Fair/Poor	ATV/Snowmobile	Sec 25 - Twp 15 - Rge 14E
	207	TA/TL/BS Fuel Wood	Winter	Fair	Machine	Sec 18 - Twp 15 - Rge 12E
	208	JP/TA/WB Fuel Wood	Summer/Winter	Good/Poor	Truck/Snowmobile	Sec 18 - Twp 16 - Rge 10E
	210	TL/BS Fuel Wood (60% Dead Standing)	Winter	Fair	Machine	Sec 11 - Twp 16 - Rge 13E
	212	JP/TA/BA Fuel Wood	Summer/Winter	Good/Fair	ATV/Snowmobile	Sec 9 - Twp 14 - Rge 10E
	214	BS/TL Fuel Wood (Dead Standing)	Winter	Poor	Machine	Sec 4 - Twp 15 - Rge 11E
	216	TA/BS/BF Fuel Wood & XMAS	Summer/Winter	Fair	Machine	Sec 19 - Twp 14 - Rge 12E
	217	TA Fuel Wood	Summer/Winter	Good/Fair	Machine	Sec 10 - Twp 15 - Rge 11E
	218	TA Fuel Wood	Summer/Winter	Good/Fair	Machine	Sec 10 - Twp 15 - Rge 11E
SELKIRK	800	TA/BO Fuel Wood	Summer/Winter	Fair	Truck/Snowmobile	Sec 16 - Twp 19 - Rge 7E



1:650,000

Forestry Branch
Agriculture and Resource Development



DESIGNATED CUTTING AREA 100

Pine Falls

- FMU 24 -

Sec 22 - Twp 17 - Rge 10 E

 Cutting Area

Location:

From Great Falls, travel northwest on Hwy 11 for 5 km to Bruneau Road. Travel west on Bruneau Road for 3 km.

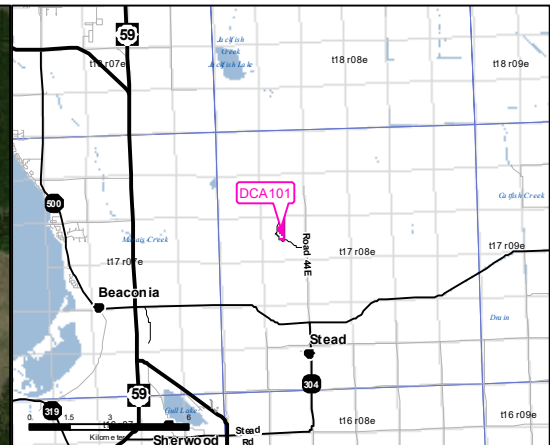
General Instructions:

Any species (excluding Elm), green or dry, can be removed from the harvest areas. White Birch has a maximum harvest limit of 5m3

INFO: Harvesting area is on north side of trail only.

NAD1983 UTM ZONE 14N
Forestry Branch
Agriculture and Resource Development

Dominant Species	Product	Species Condition	Season	Access Condition	Suggestion
White Birch 70%	Fuel Wood	Green	Summer/Winter	Good/Poor	Truck/Snowmobile
Trembling Aspen 30%	Fuel Wood	Green	Summer/Winter	Good/Poor	Truck/Snowmobile



DESIGNATED CUTTING AREA 101

Pine falls
- FMU 24 -
Sec 20 - Twp 7 - Rge 8E

Cutting Area

Location:
From jct of Hwy 304 & Road 44 East, travel north on Road 44 East for 2.7 km to trail. Travel west for 1 km.

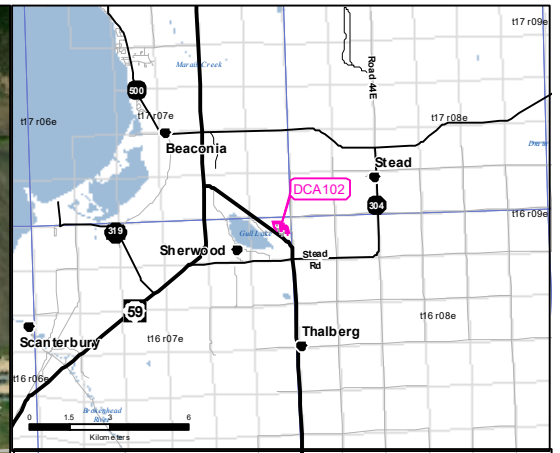
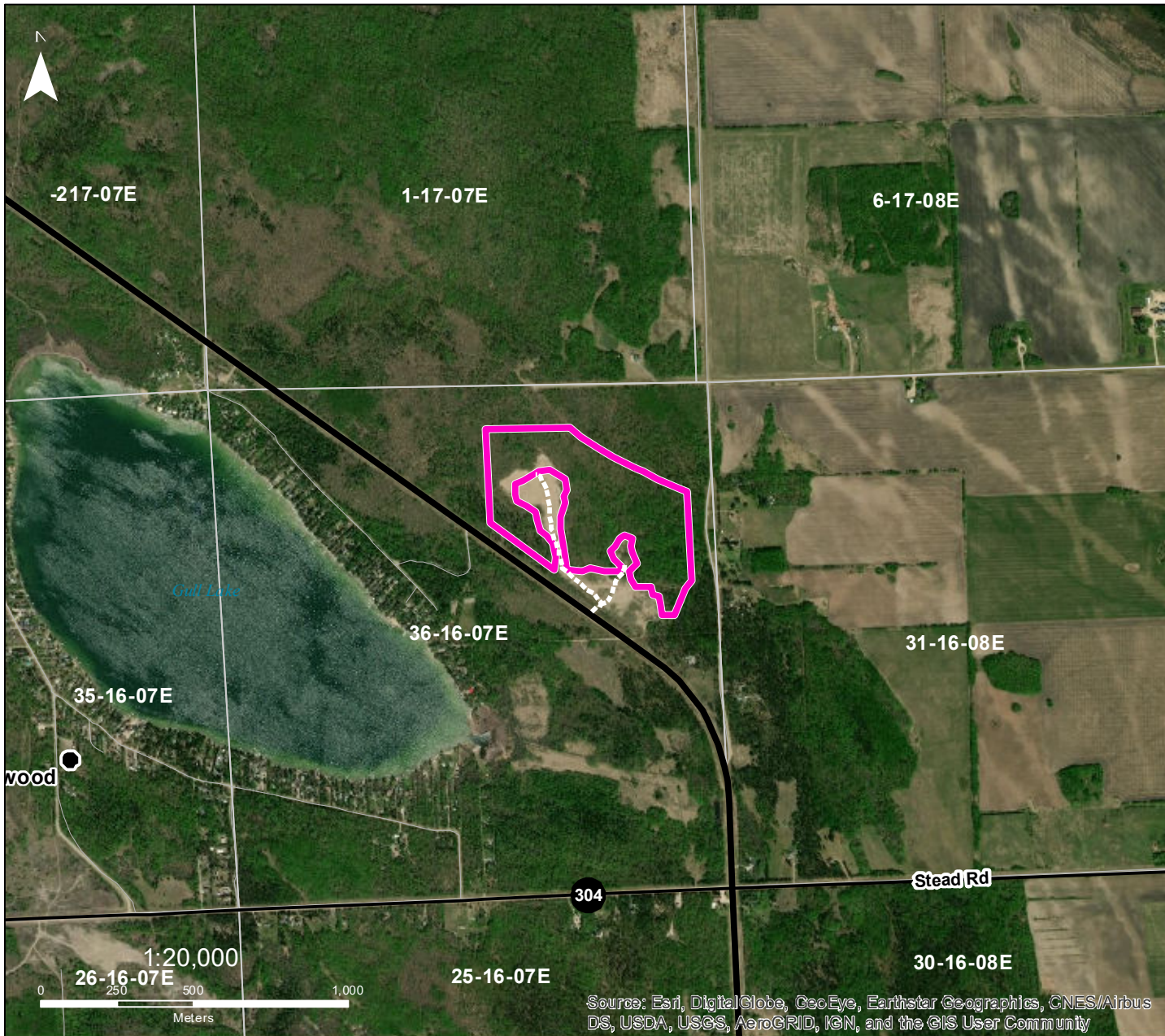
General Instructions:
Any species (excluding Elm), green or dry, can be removed from the harvest areas. White Birch has a maximum harvest limit of 5m3

INFO: Please stay out of tree plantations (red hatchmark).

NAD1983 UTM ZONE 14N
Forestry Branch
Agriculture and Resource Development

Source: Esri, DigitalGlobe, GeoEye, Earthstar Geographics, CNES/Airbus DS, USDA, USGS, AeroGRID, IGN, and the GIS User Community

Dominant Species	Product	Species Condition	Season	Access Condition	Suggestion
Jack Pine 80%	Fuel Wood	Green	Summer/Winter	Good/Poor	Truck/Snowmobile
Trembling Aspen 10%	Fuel Wood	Green	Summer/Winter	Good/Poor	Truck/Snowmobile
White Birch 10%	Fuel Wood	Green	Summer/Winter	Good/Poor	Truck/Snowmobile



DESIGNATED CUTTING AREA 102

Pine Falls
- FMU 24 -

Sec 36 - Twp 16 - Rge 7E

 Cutting Area

Location:

From jct of Hwy 12 & Stead Road, travel north on Hwy 12 for 1 km to trail (entrance to gravel pit). Travel northeast through pit for 150 m.

General Instructions:

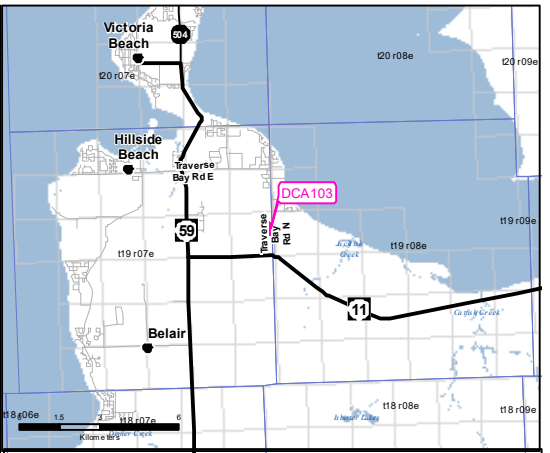
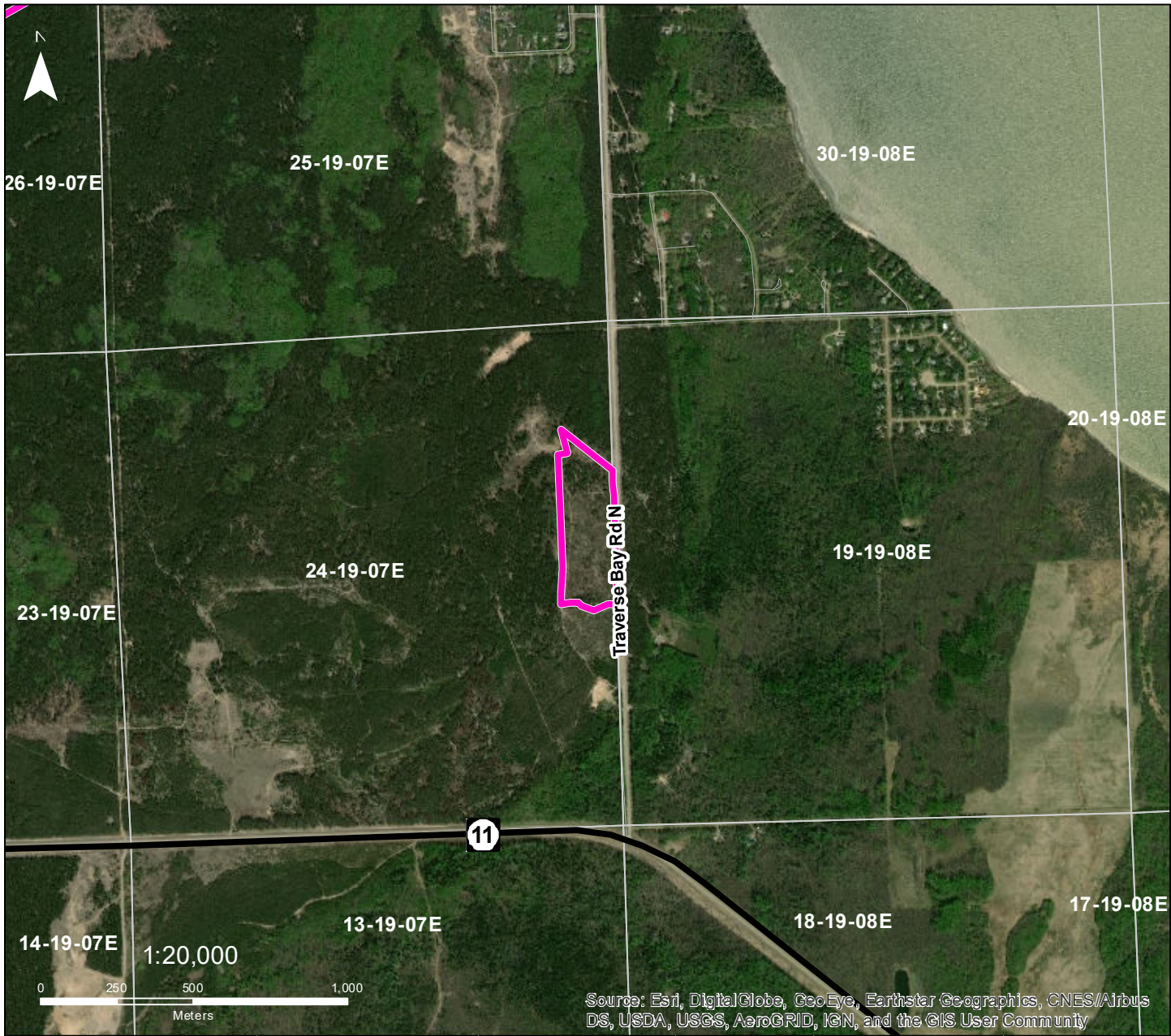
Any species (excluding Elm), green or dry, can be removed from the harvest areas. White Birch has a maximum harvest limit of 5m³

INFO: CAUTION. Active quarry site. NEW BOUNDARY (Nov 2017).

NAD1983 UTM ZONE 14N
Forestry Branch
Agriculture and Resource Development


Source: Esri, DigitalGlobe, GeoEye, Earthstar Geographics, CNES/Airbus DS, USDA, USGS, AeroGRID, IGN, and the GIS User Community

Dominant Species	Product	Species Condition	Season	Access Condition	Suggestion
Trembling Aspen 50%	Fuel Wood	Green	Summer/Winter	Good/Poor	Truck/Snowmobile
Jack Pine 30%	Fuel Wood	Green	Summer/Winter	Good/Poor	Truck/Snowmobile
White Birch 20%	Fuel Wood	Green	Summer/Winter	Good/Poor	Truck/Snowmobile



DESIGNATED CUTTING AREA 103

Pine Falls
- FMU 24 -
Sec 24 - Twp 19 - Rge 7E

 Cutting Area

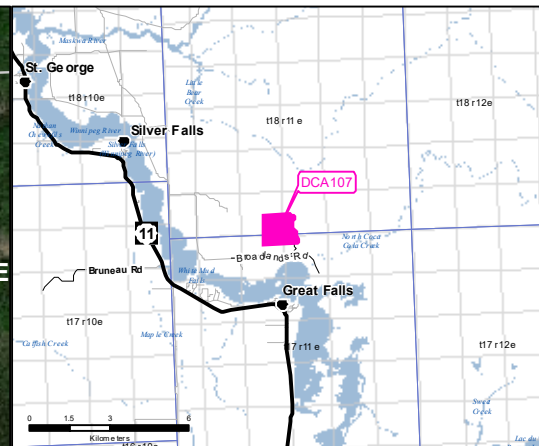
Location:
From jct of Hwy 11 & Hwy 59, travel east for 3.2 km to Traverse Bay Road North. Travel north for 700 m.

General Instructions:
Any species (excluding Elm), green or dry, can be removed from the harvest areas. White Birch has a maximum harvest limit of 5m3

INFO:

NAD1983 UTM ZONE 14N
Forestry Branch
Agriculture and Resource Development

Dominant Species	Product	Species Condition	Season	Access Condition	Suggestion
Jack Pine 100%	Fuel Wood	Green	Summer/Winter	Good/Poor	Truck/Snowmobile



DESIGNATED CUTTING AREA 107

Pine Falls

- FMU 24 -

Sec 4 - Twp 18 - Rge 11E

 Cutting Area

Location:

From jct of Hwy 304 & Broadlands Road, travel south for 19.6 km.

General Instructions:

Any species (excluding Elm), green or dry, can be removed from the harvest areas. White Birch has a maximum harvest limit of 5m3

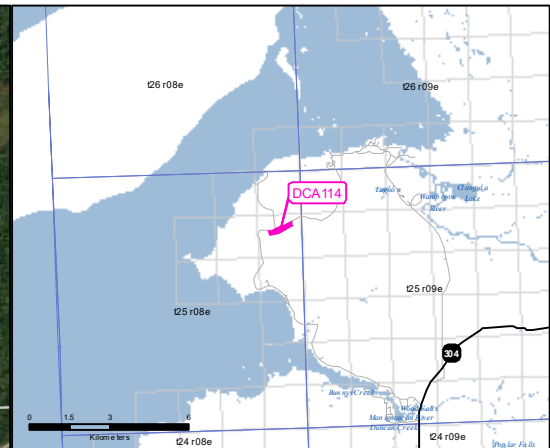
INFO: No harvesting off of Broadlands Road. Stay within boundary. No rutting or damage to walking trail.

NAD1983 UTM ZONE 14N

Forestry Branch

Agriculture and Resource Development

Dominant Species	Product	Species Condition	Season	Access Condition	Suggestion
Trembling Aspen 70%	Fuel Wood	Green	All	Poor	Machine
Green Ash 20%	Fuel Wood	Green	All	Poor	Machine
Balsam Fir 10%	Christmas Tree	Green	All	Poor	Machine



DESIGNATED CUTTING AREA 114

Pine Falls

- FMU 24 -

Sec 25 - Twp 25 - Rge 8 E

 Cutting Area

Location:

From the town of Seymourville, travel south on road to Manigotagan for 5 km.

General Instructions:

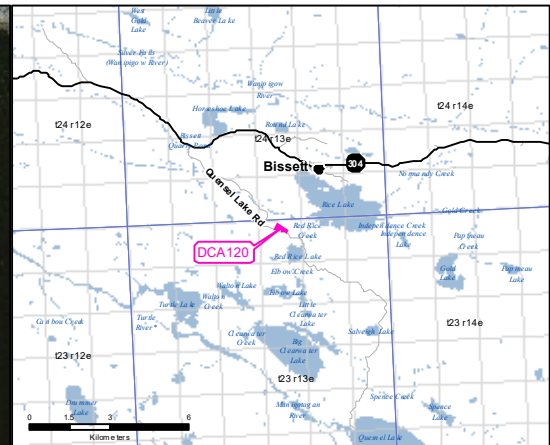
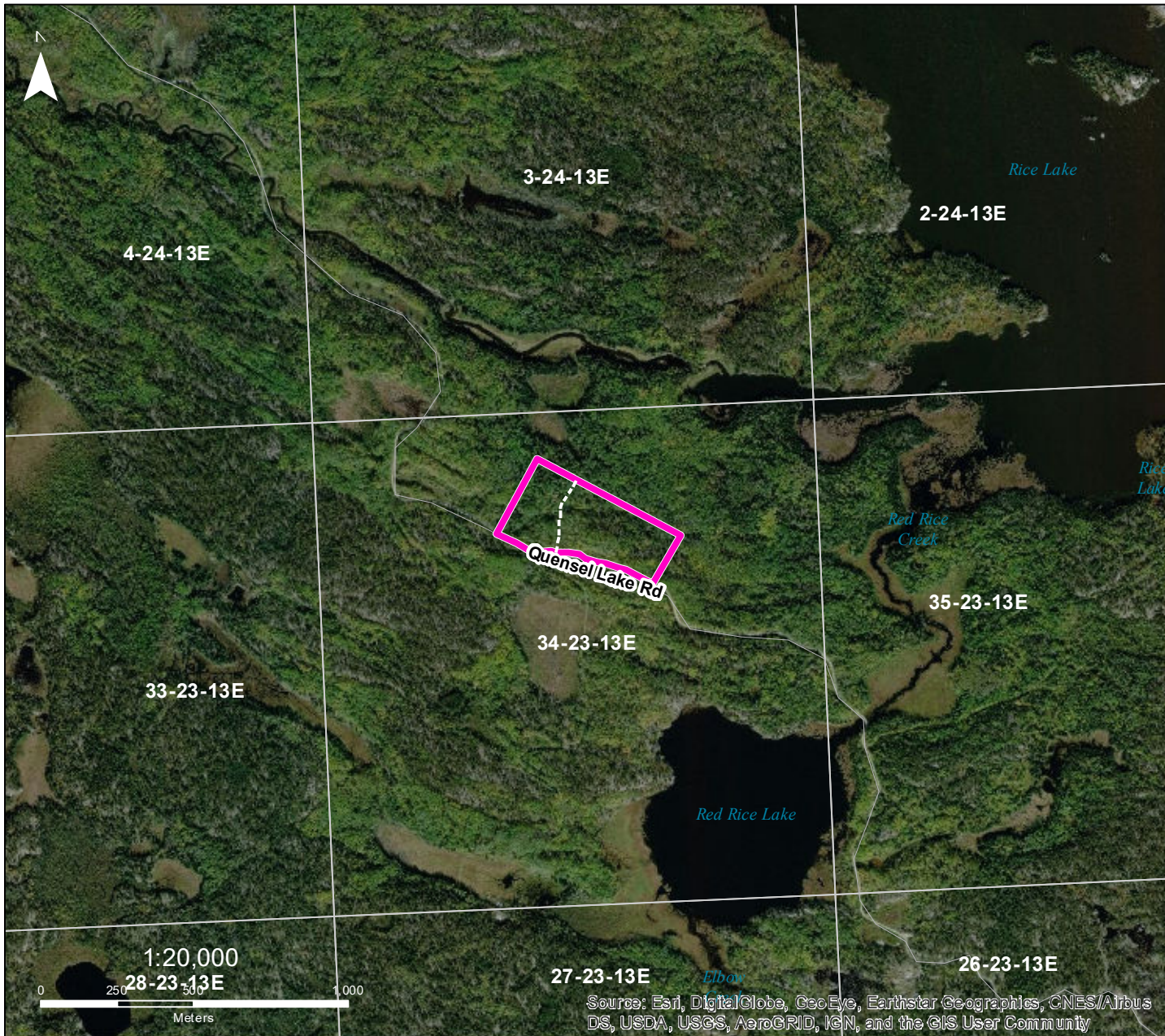
Any species (excluding Elm), green or dry, can be removed from the harvest areas. White Birch has a maximum harvest limit of 5m³

INFO: Please cut wood from where gravel is being dug or take from debris piles first.

NAD1983 UTM ZONE 14N

Forestry Branch
Agriculture and Resource Development

Dominant Species	Product	Species Condition	Season	Access Condition	Suggestion
Jack Pine 70%	Fuel Wood	Green	Summer/Winter	Good	Truck/Snowmobile
White Birch 20%	Fuel Wood	Green	Summer/Winter	Good	Truck/Snowmobile
Trembling Aspen 10%	Fuel Wood	Green	Summer/Winter	Good	Truck/Snowmobile




DESIGNATED CUTTING AREA 120

Pine Falls

- FMU 31 -

Sec 34 - Twp 23 - Rge 13 E

 Cutting Area

Location:

Approx. 5km south on Quensel Lake Rd. from P.R. #304 west of Bissett. North side of Quensel Lake Rd.

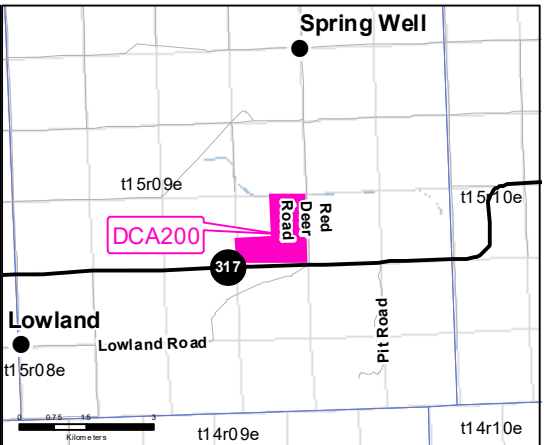
General Instructions:

Any species (excluding Elm), green or dry, can be removed from the harvest areas. White Birch has a maximum harvest limit of 5m3

INFO: Do Not leave branches or debris on access trail of road.

NAD1983 UTM ZONE 14N
Forestry Branch
Agriculture and Resource Development

Dominant Species	Product	Species Condition	Season	Access Condition	Suggestion
Trembling Aspen 70%	Fuel Wood	Green	Summer/Winter	Good/Fair	ATV/Snowmobile
Jack Pine 20%	Fuel Wood	Green	Summer/Winter	Good/Fair	ATV/Snowmobile
Tamarack 10%	Fuel Wood	Green	Winter	Fair	ATV/Snowmobile



DESIGNATED CUTTING AREA 200

Lac Du Bonnet
- FMU 31 -
Sec 15 - Twp 15 - Rge 9E

Cutting Area

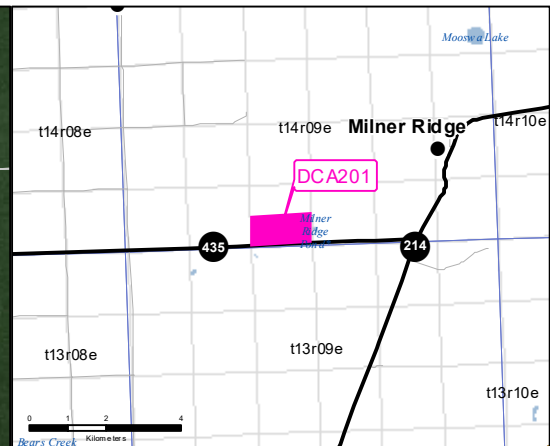
Location:
From jct of Hwy 11 & Hwy 317, travel west on Hwy 317 for 16 km to Red Deer Road.

General Instructions:
Any species (excluding Elm), green or dry, can be removed from the harvest areas. White Birch has a maximum harvest limit of 5m³

INFO: No harvesting within 50 m of Hwy 317.

NAD1983 UTM ZONE 14N
Forestry Branch
Agriculture and Resource Development

Dominant Species	Product	Species Condition	Season	Access Condition	Suggestion
Black Spruce 50%	Fuel Wood, Post & Rail	Green	Winter	Poor	Machine
Trembling Aspen 40%	Fuel Wood	Green	Summer/Winter	Fair/Poor	Machine
Jack Pine 10%	Fuel Wood	Green	Summer/Winter	Fair/Poor	Machine



DESIGNATED CUTTING AREA 201

Lac Du Bonnet

- FMU 24 -

Sec 4 - Twp 14 - Rge 9E

 Cutting Area

Location:

From jct of Hwy 214 & Hwy 435, travel west on Hwy 435 for 2 km.

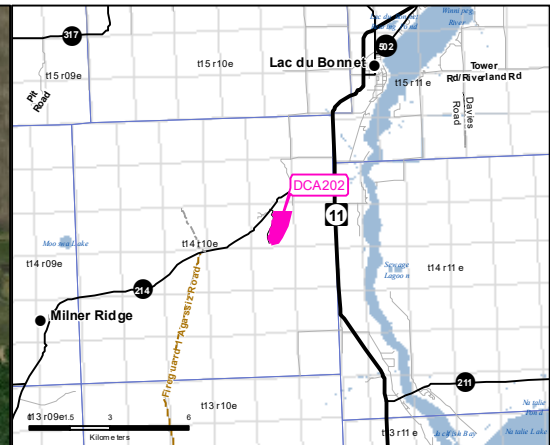
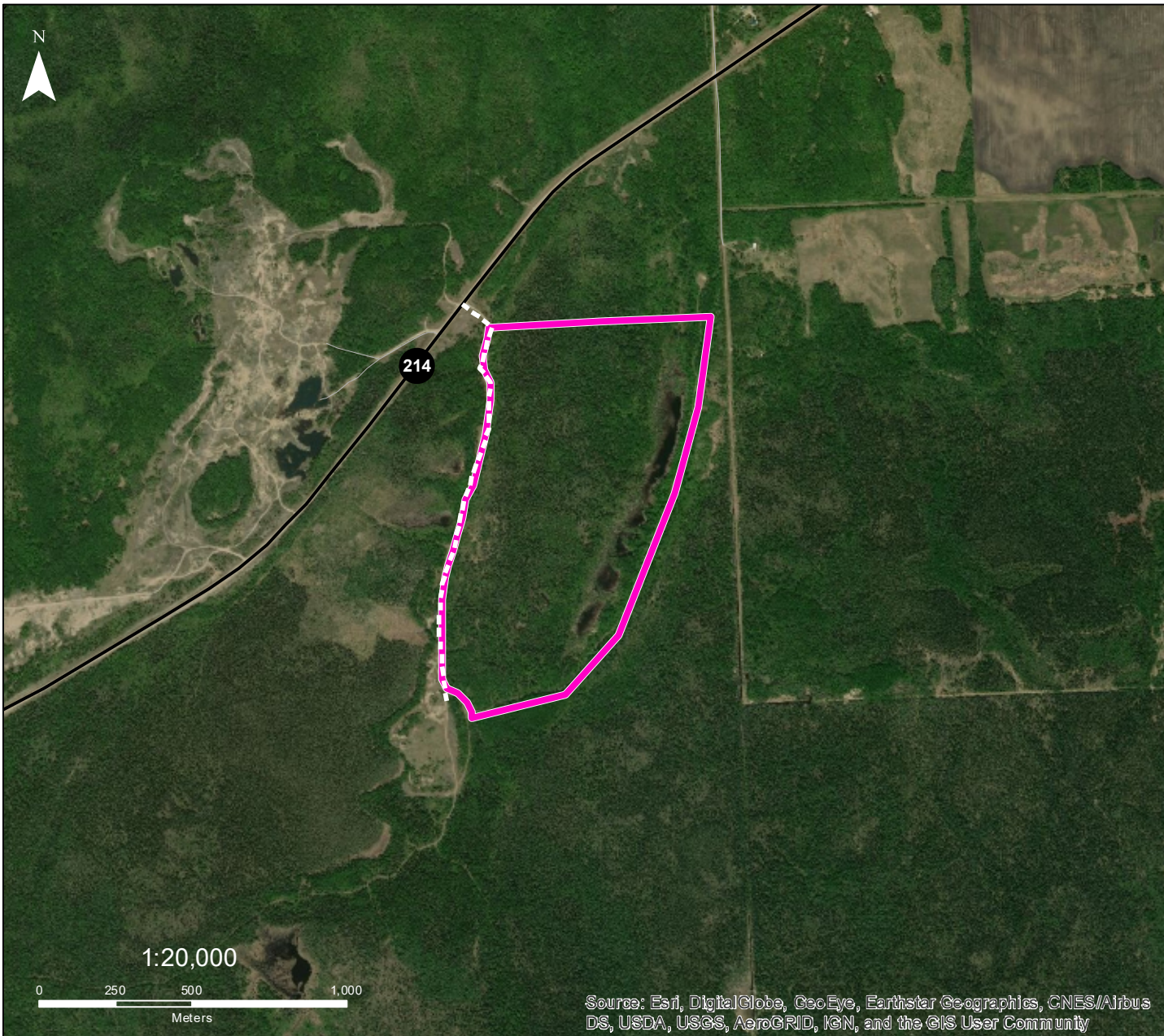
General Instructions:

Any species (excluding Elm), green or dry, can be removed from the harvest areas. White Birch has a maximum harvest limit of 5m3

INFO:

NAD1983 UTM ZONE 14N
Forestry Branch
Agriculture and Resource Development

Dominant Species	Product	Species Condition	Season	Access Condition	Suggestion
Black Spruce 70%	Fuel Wood, Post & Rail	Green	Winter	Poor	Machine
Tamarack/Larch 20%	Fuel Wood, Post & Rail	Green	Winter	Poor	Machine
Trembling Aspen 10%	Fuel Wood	Green	Summer/Winter	Fair	



DESIGNATED CUTTING AREA 202

Lac Du Bonnet

- FMU 24 -

Sec 23 - Twp 14 - Rge 10 E

 Cutting Area

Location:

From jct of Hwy 11 & Hwy 214, travel west on Hwy 214 for 1.3 km to gravel road. Travel south for 100 m. Cutting only on east side of road.

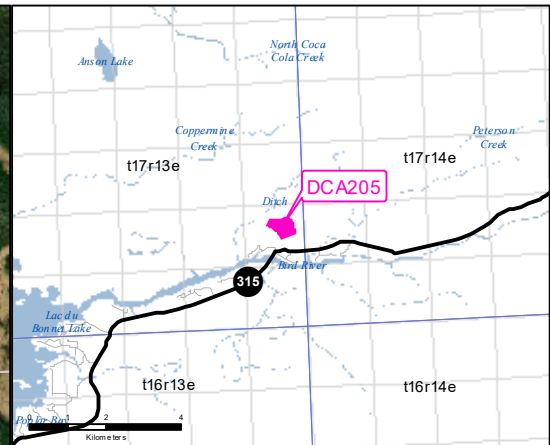
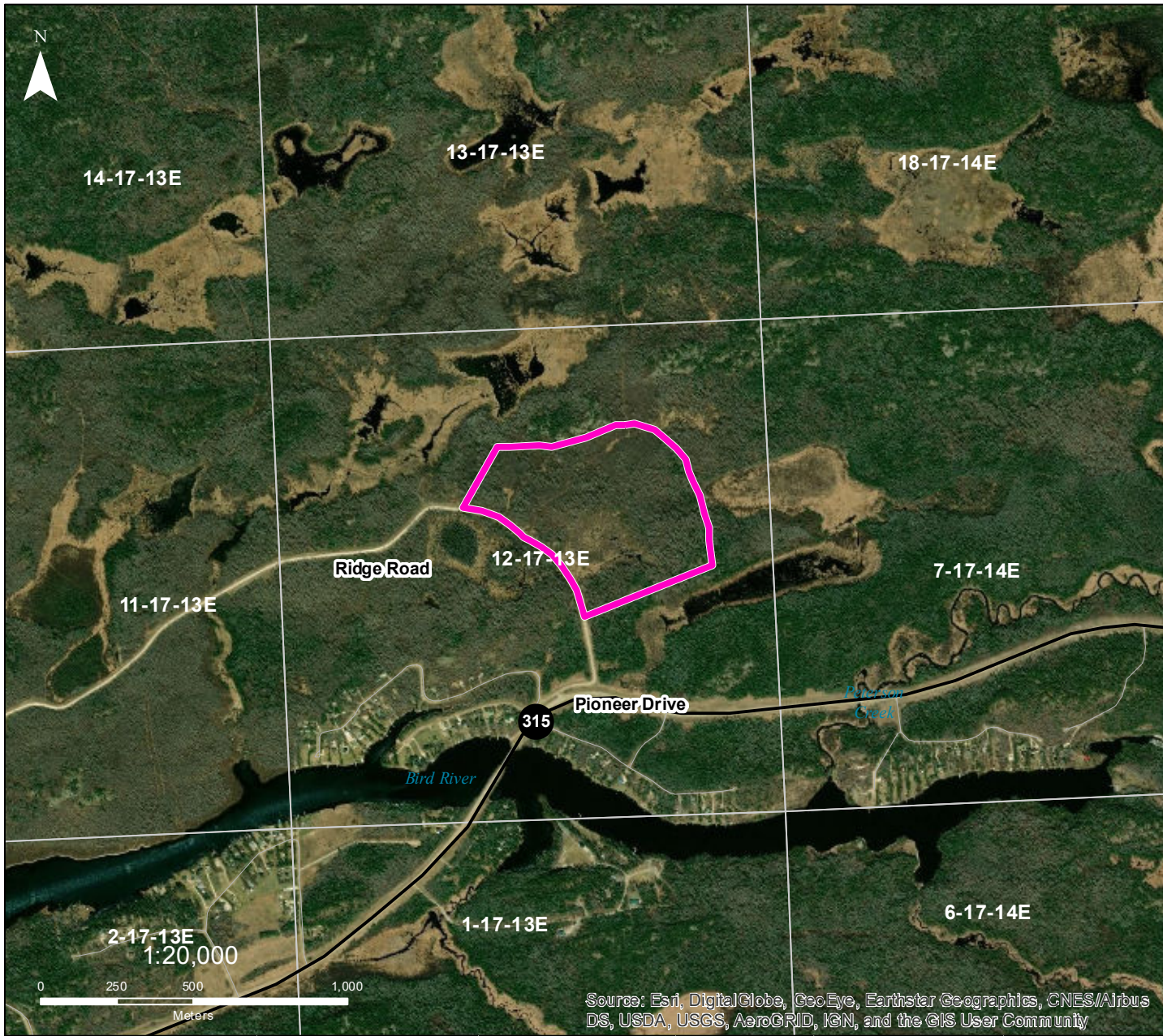
General Instructions:

Any species (excluding Elm), green or dry, can be removed from the harvest areas. White Birch has a maximum harvest limit of 5m3

INFO: Do not leave debris on trails. Watch for metal and glass along main access trail (old dump).

NAD1983 UTM ZONE 14N
Forestry Branch
Agriculture and Resource Development

Dominant Species	Product	Species Condition	Season	Access Condition	Suggestion
Trembling Aspen 60%	Fuel Wood	Green	Summer/Winter	Poor	Machine
Black Spruce 20%	Fuel Wood, Post & Rail	Green	Winter	Poor	Machine
White Birch 20%	Fuel Wood	Green	Summer/Winter	Poor	Machine



DESIGNATED CUTTING AREA 205

Lac Du Bonnet
- FMU 24 -

Sec 12 - Twp 17 - Rge 13 E

 Cutting Area

Location:

From Bird River Bridge, travel north on Hwy 315 for 250 m to Pioneer Drive. Travel north and immediately turn east onto Ridge Road for 350 m.

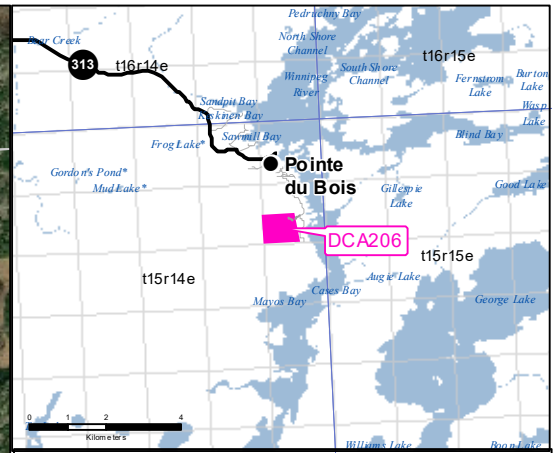
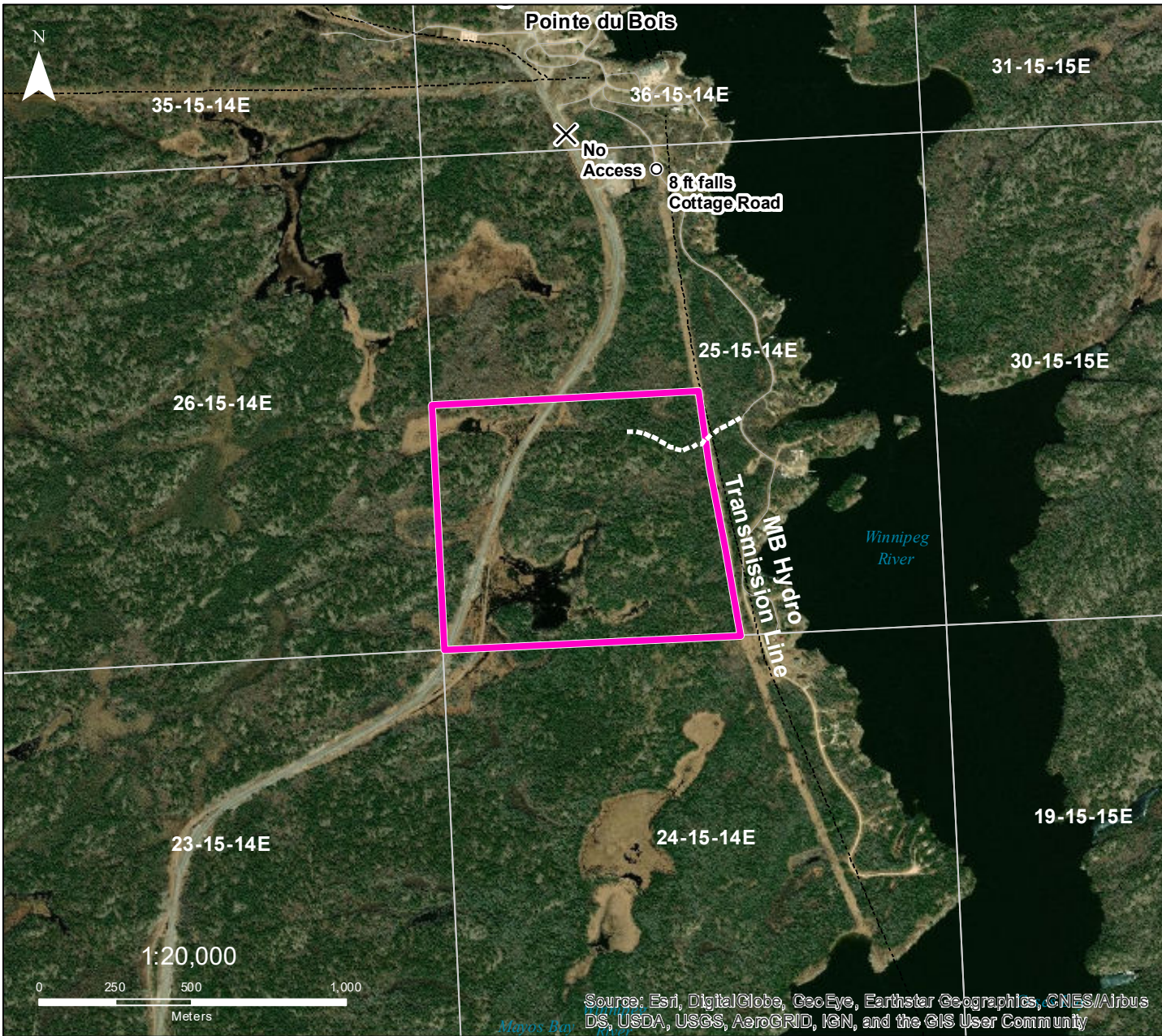
General Instructions:

Any species (excluding Elm), green or dry, can be removed from the harvest areas. White Birch has a maximum harvest limit of 5m3

INFO:

NAD1983 UTM ZONE 14N
Forestry Branch
Agriculture and Resource Development

Dominant Species	Product	Species Condition	Season	Access Condition	Suggestion
Trembling Aspen 80%	Fuel Wood	Green	Summer/Winter	Fair/Poor	Machine



DESIGNATED CUTTING AREA 206

Lac Du Bonnet

- FMU 24 -

Sec 25 - Twp 15 - Rge 14 E

 Cutting Area

Location:

From Pointe du Bois hydro dam, travel south for 2 km.

General Instructions:

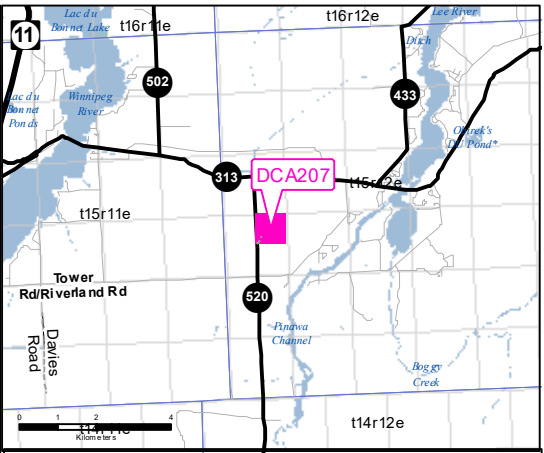
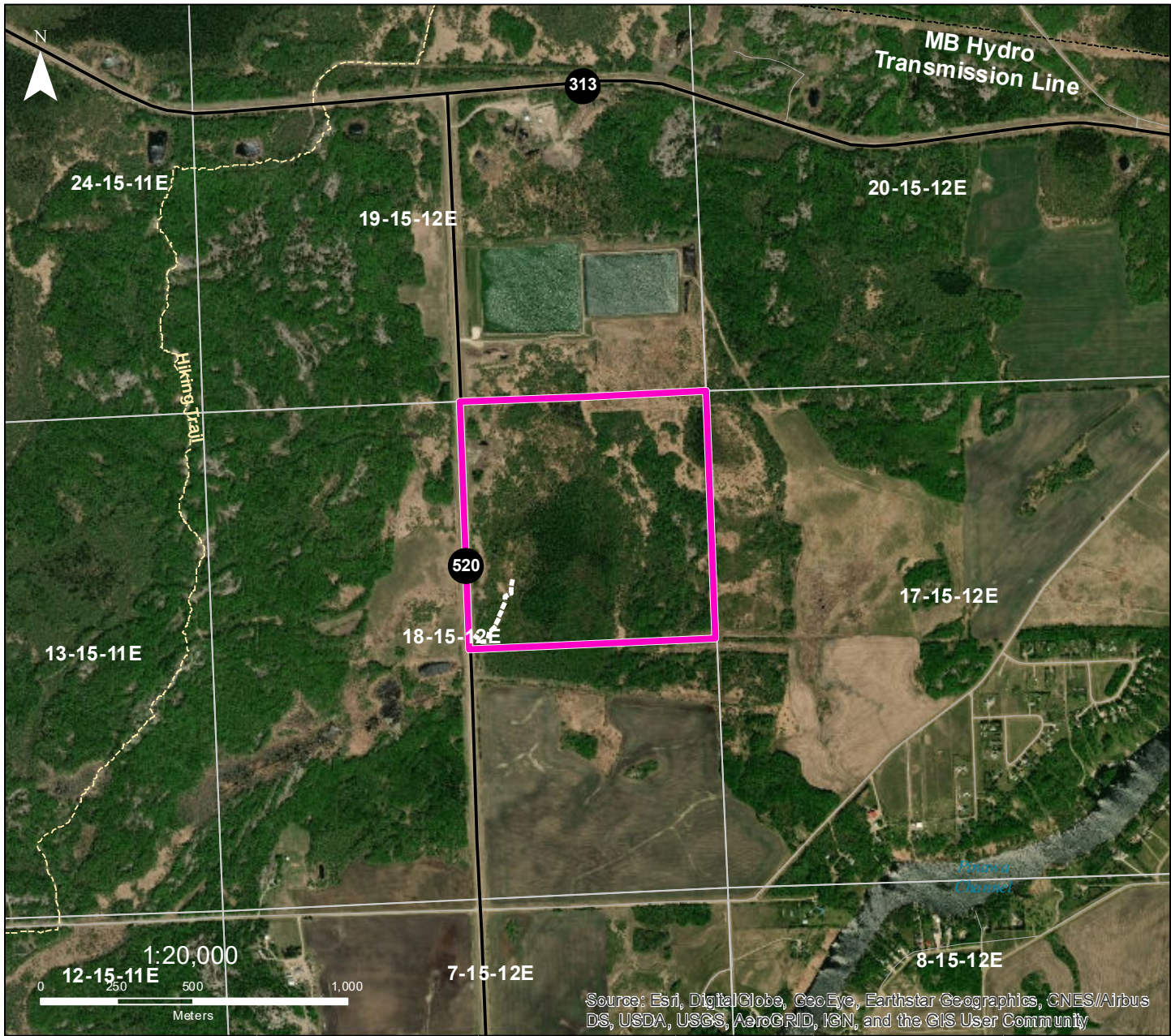
Any species (excluding Elm), green or dry, can be removed from the harvest areas. White Birch has a maximum harvest limit of 5m3

INFO: Access from trail and hydro line on east side only.

NAD1983 UTM ZONE 14N
Forestry Branch
Agriculture and Resource Development

Source: Esri, DigitalGlobe, GeoEye, Earthstar Geographics, CNES/Airbus DS, USDA, USGS, AeroGRID, IGN, and the GIS User Community

Dominant Species	Product	Species Condition	Season	Access Condition	Suggestion
Jack Pine 90%	Fuel Wood	Green	Summer/Winter	Fair/Poor	ATV/Snowmobile
Trembling Aspen 10%	Fuel Wood	Green	Summer/Winter	Fair/Poor	ATV/Snowmobile



DESIGNATED CUTTING AREA 207

Lac Du Bonnet
 - FMU 24 -
 Sec 18 - Twp 15 - Rge 12 E

 Cutting Area

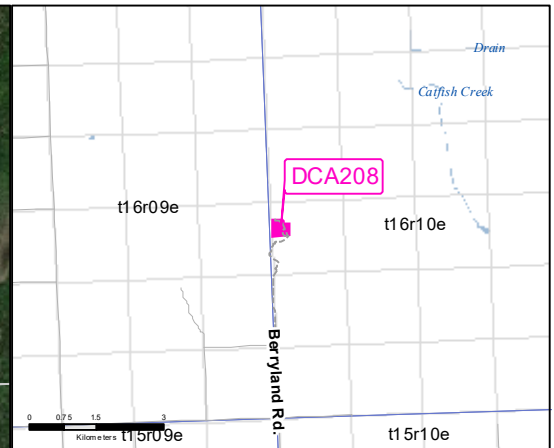
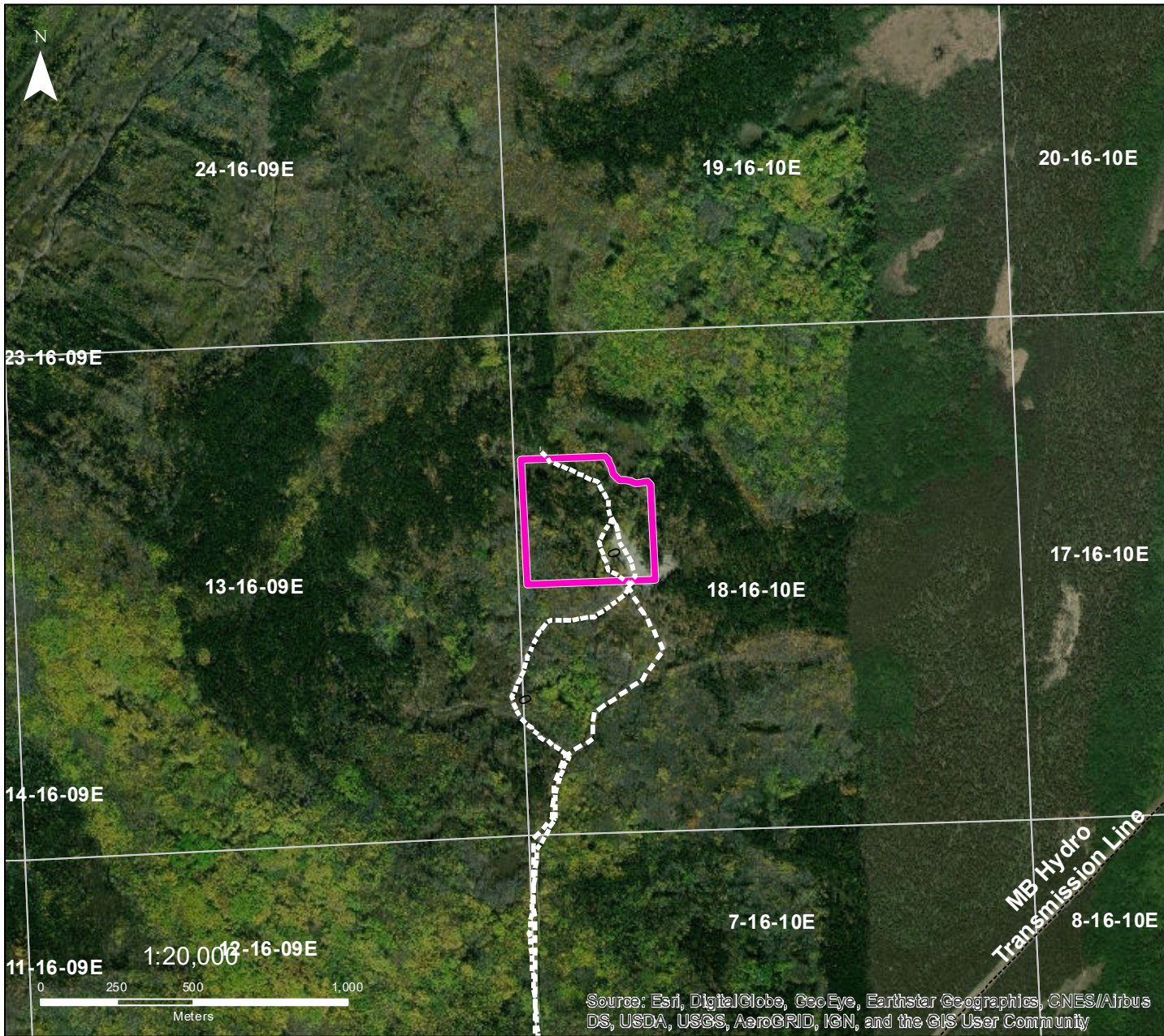
Location:
 From jct of Hwy 313 & Hwy 520, travel south on Hwy 520 for 1 km.

General Instructions:
 Any species (excluding Elm), green or dry, can be removed from the harvest areas. White Birch has a maximum harvest limit of 5m3

INFO:

NAD1983 UTM ZONE 14N
 Forestry Branch
 Agriculture and Resource Development

Dominant Species	Product	Species Condition	Season	Access Condition	Suggestion
Trembling Aspen 40%	Fuel Wood	Green	Winter	Fair	Machine
Tamarack/Larch 30%	Fuel Wood, Post & Rail		Winter	Fair	Machine
Black Spruce 30%	Fuel Wood, Post & Rail	Green	Winter	Fair	Machine



DESIGNATED CUTTING AREA 208

Lac Du Bonnet

- FMU 24 -

Sec 18 - Twp 16 - Rge 10 E

 Cutting Area

Location:

From jct of Hwy 317 & Berryland Road, travel north on Berryland Road for 9 km to Brightstone Provincial Forest. Continue on gravel road for 2.5 km.

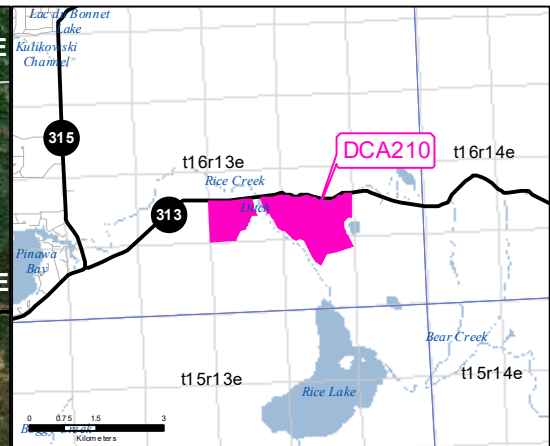
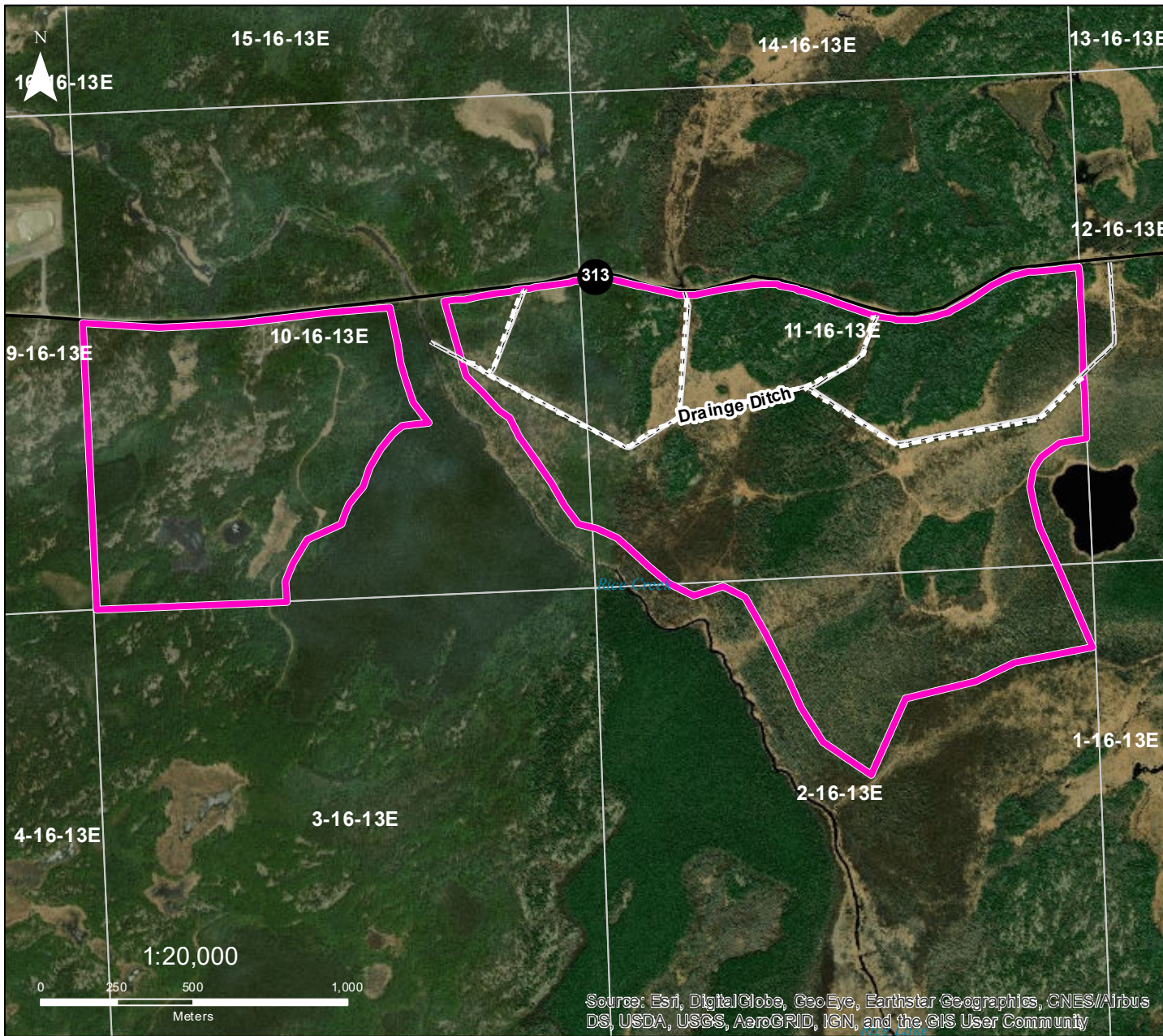
General Instructions:

Any species (excluding Elm), green or dry, can be removed from the harvest areas. White Birch has a maximum harvest limit of 5m³

INFO:

Dominant Species	Product	Species Condition	Season	Access Condition	Suggestion
Jack Pine 60%	Fuel Wood	Green	Summer/Winter	Good/Poor	Truck/Snowmobile
Trembling Aspen 30%	Fuel Wood	Green	Summer/Winter	Good/Poor	Truck/Snowmobile
White Birch 10%	Fuel Wood	Green	Summer/Winter	Good/Poor	Truck/Snowmobile

NAD1983 UTM ZONE 14N
Forestry Branch
Agriculture and Resource Development



DESIGNATED CUTTING AREA 210

Lac Du Bonnet

- FMU 31 -

Sec 11 - Twp 16 - Rge 13E

 Cutting Area

Location:

From jct of Hwy 313 & Hwy 315, travel east on Hwy 313 for 4.2 km.

General Instructions:

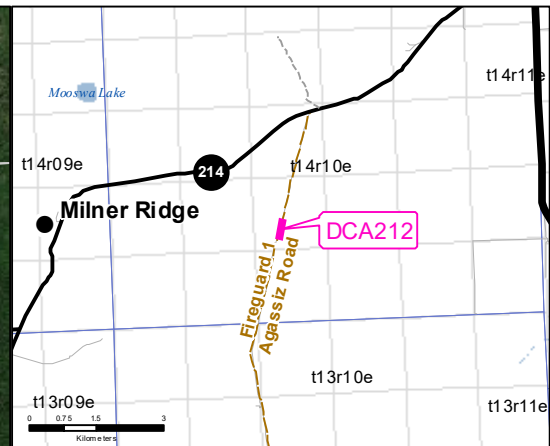
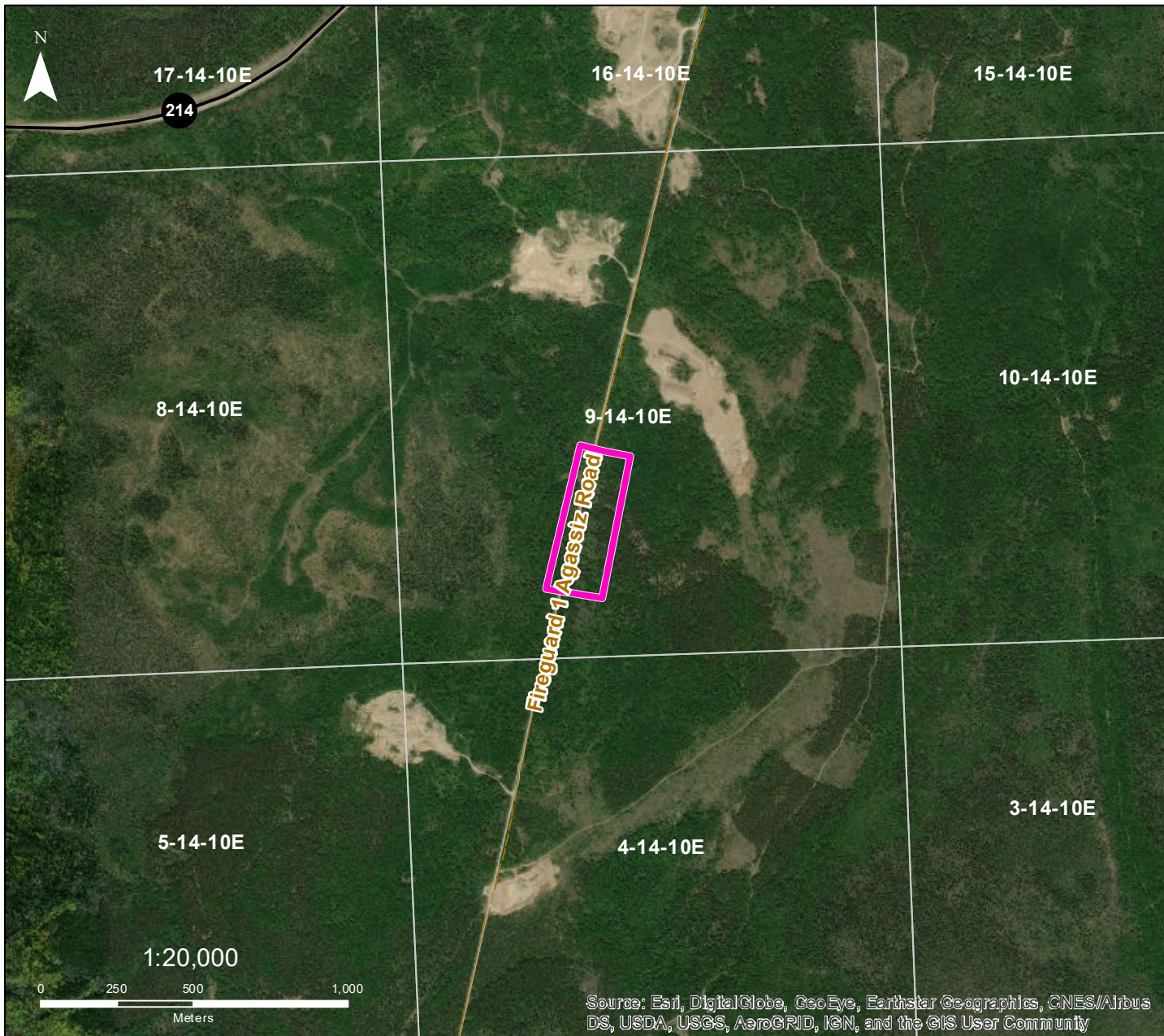
Any species (excluding Elm), green or dry, can be removed from the harvest areas. White Birch has a maximum harvest limit of 5m3

INFO: No rutting or soil disturbance. No crossing or harvesting within 50 m of drains.

NAD1983 UTM ZONE 14N

Forestry Branch
Agriculture and Resource Development

Dominant Species	Product	Species Condition	Season	Access Condition	Suggestion
Tamarack/Larch 70%	Fuel Wood, Post & Rail	60% Dead Standing	Winter Frost	Fair	Machine
Black Spruce 30%	Fuel Wood, Post & Rail	Green	Winter Frost	Fair	Machine



DESIGNATED CUTTING AREA 212

Lac Du Bonnet

- FMU 24 -

Sec 9 - Twp 14 - Rge 10E

 Cutting Area

Location:

From jct of Hwy 11 & Hwy 214, travel west on Hwy 214 for 6 km to Fireguard 1/Central Agassiz Road. Travel south for 2.5 km.

General Instructions:

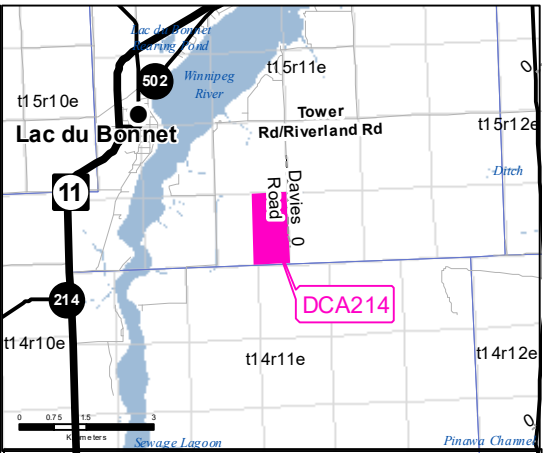
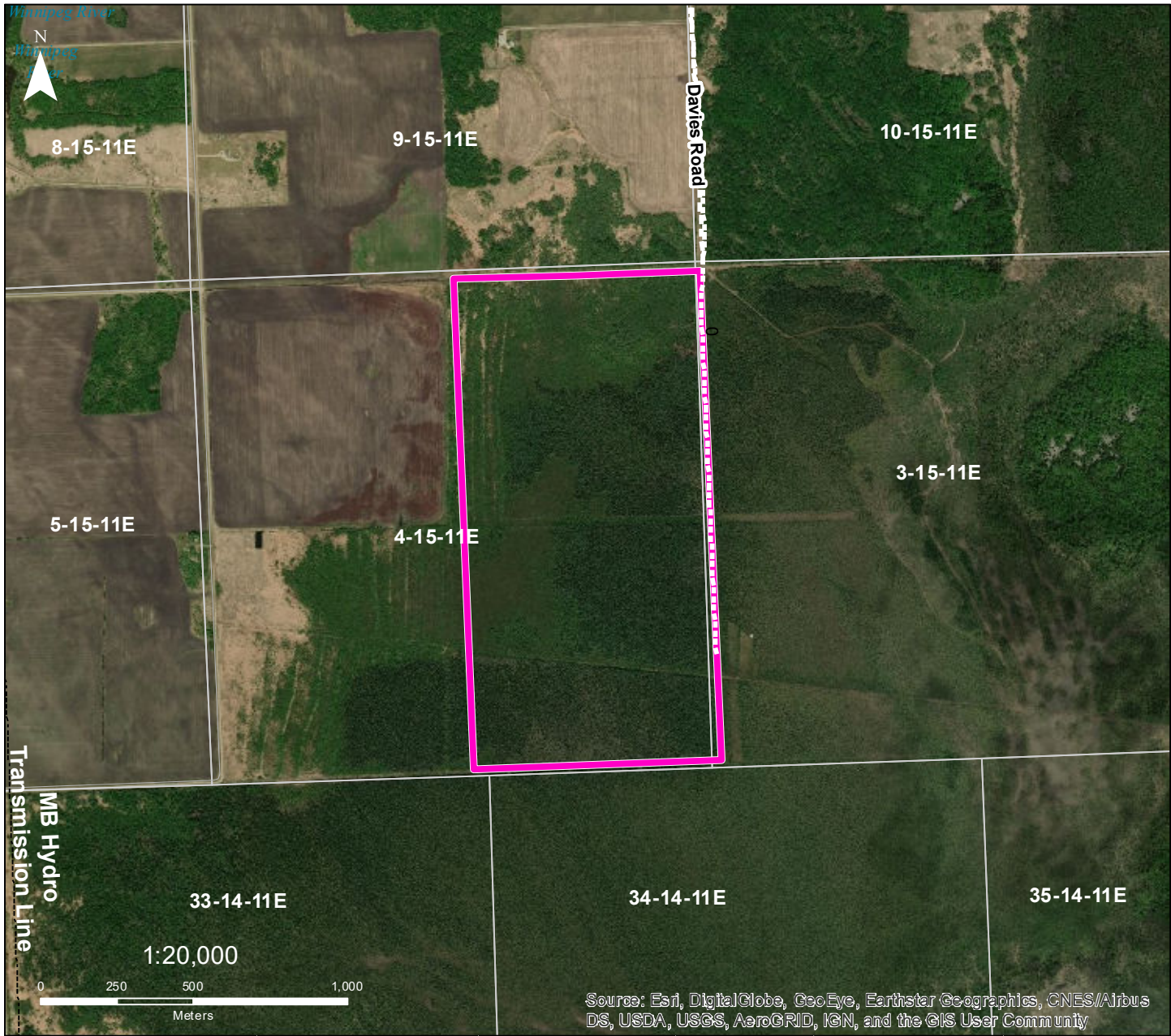
Any species (excluding Elm), green or dry, can be removed from the harvest areas. White Birch has a maximum harvest limit of 5m3

INFO: CAUTION. Gravel trucks hauling. Do not block roadway.

NAD1983 UTM ZONE 14N

Forestry Branch
Agriculture and Resource Development

Dominant Species	Product	Species Condition	Season	Access Condition	Suggestion
Jack Pine 40%	Fuel Wood	Green/Dead	Sumer/Winter	Good/Fair	ATV/Snowmobile
Trembling Aspen 40%	Fuel Wood	Green/Dead	Summer/Winter	Good/Fair	ATV/Snowmobile
Black Spruce 20%	Fuel Wood	Green/Dead	Winter	Fair	Snowmobile




DESIGNATED CUTTING AREA 214

Lac Du Bonnet

- FMU 24 -

Sec 4 - Twp 15 - Rge 11E

 Cutting Area

Location:

From jct of Hwy 313 & Hwy 520, travel south 2.5 km. Travel 6 km west on Tower Road (turns into Riverland Road) to Davies Road. Travel south on Davies Road for 1.6 km (road ends).

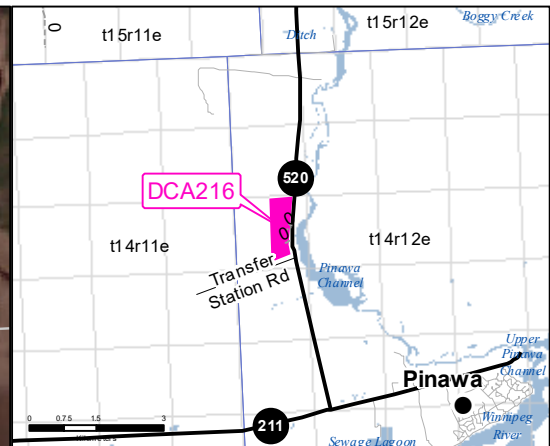
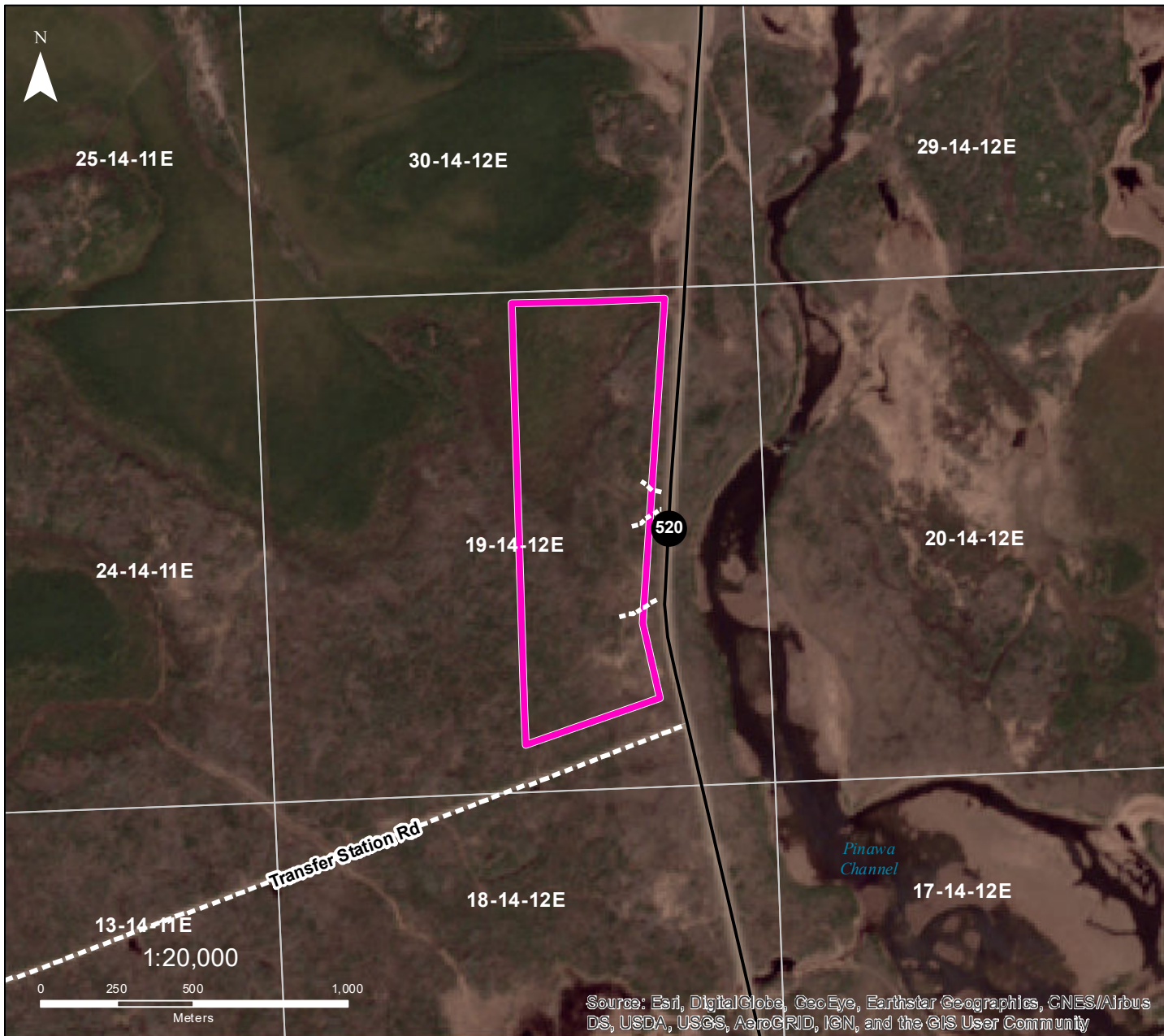
General Instructions:

Any species (excluding Elm), green or dry, can be removed from the harvest areas. White Birch has a maximum harvest limit of 5m3

INFO: No soil disturbance, trail damage or rutting.

NAD1983 UTM ZONE 14N
Forestry Branch
Agriculture and Resource Development

Dominant Species	Product	Species Condition	Season	Access Condition	Suggestion
Black Spruce 80%	Fuel Wood, Post & Rail	Green	Winter Frost	Poor	Machine
Tamarack/Larch 20%	Fuel Wood	Dead Standing	Winter Frost	Poor	Machine



DESIGNATED CUTTING AREA 216

Lac Du Bonnet

- FMU 24 -

Sec 19 - Twp 14 - Rge 12 E

 Cutting Area

Location:

From jct of Hwy 211 & Hwy 520, travel north on Hwy 520 for 3.5 km. Pinawa transfer station road is gated; no guarantee of access.

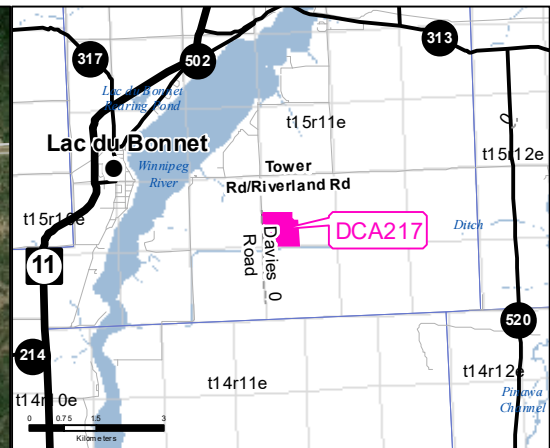
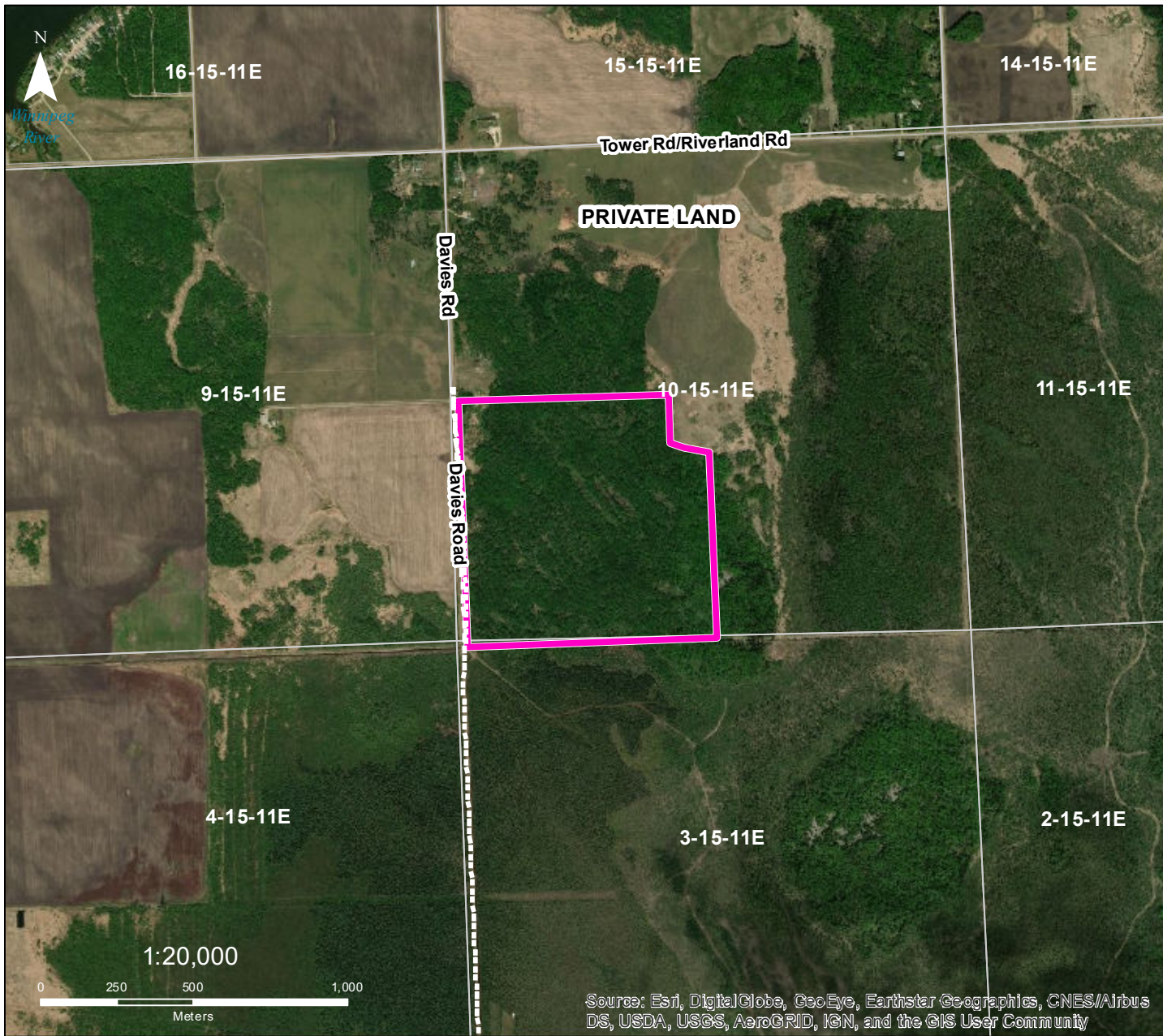
General Instructions:

Any species (excluding Elm), green or dry, can be removed from the harvest areas. White Birch has a maximum harvest limit of 5m3

INFO: No harvesting within 50 m of Hwy 520 or 100 m of transfer station road. Leave dead trees for bird nesting cavities.

NAD1983 UTM ZONE 14N
Forestry Branch
Agriculture and Resource Development

Dominant Species	Product	Species Condition	Season	Access Condition	Suggestion
Trembling Aspen 60%	Fuel Wood	Green	Summer/Winter	Fair	Machine
Black Spruce 30%	Fuel Wood, Post and Rail	Green	Winter Frost	Fair	Machine
Balsam Fir 10%	Christmas Trees/Boughs	Green	Summer/Winter	Fair	Machine



DESIGNATED CUTTING AREA 217

Lac Du Bonnet

- FMU 24 -

Sec 10 - Twp 15 - Rge 11 E

 Cutting Area

Location:

From jct of Hwy 313 & Hwy 520, travel south on Hwy 520 for 2.5 km. Travel 6 km west on Tower Road (turns into Riverland Road) to Davies Road. Travel south for 1 km.

General Instructions:

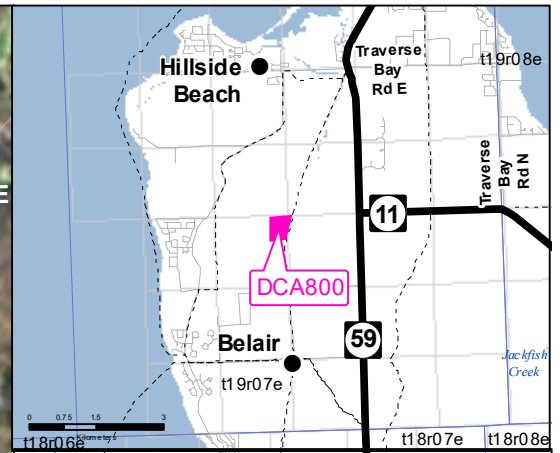
Any species (excluding Elm), green or dry, can be removed from the harvest areas. White Birch has a maximum harvest limit of 5m3

INFO:

NAD1983 UTM ZONE 14N
Forestry Branch
Agriculture and Resource Development


Source: Esri, DigitalGlobe, GeoEye, Earthstar Geographics, CNES/Airbus DS, USDA, USGS, AeroGRID, IGN, and the GIS User Community

Dominant Species	Product	Species Condition	Season	Access Condition	Suggestion
Trembling Aspen 100%	Fuel Wood	Green	Summer/Winter	Good/Fair	Machine



DESIGNATED CUTTING AREA 800

Selkirk
- FMU 24 -
Sec 16 - Twp 19 - Rge 7E

 Cutting Area

Location:
From jct of Hwy 59 & Belair Road, travel west on Belair Road for 1.5 km to gravel road. Travel north on gravel road for 2.7 km.

General Instructions:
Any species (excluding Elm), green or dry, can be removed from the harvest areas. White Birch has a maximum harvest limit of 5m3

INFO: Do not leave any debris on gravel road. NO truck access during winter.

NAD1983 UTM ZONE 14N
Forestry Branch
Agriculture and Resource Development

Dominant Species	Product	Species Condition	Season	Access Condition	Suggestion
Trembling Aspen 60%	Fuel Wood	Green	Summer/Winter	Fair	Truck/Snowmobile
Bur Oak 40%	Fuel Wood	Green	Summer/Winter	Fair	Truck/Snowmobile