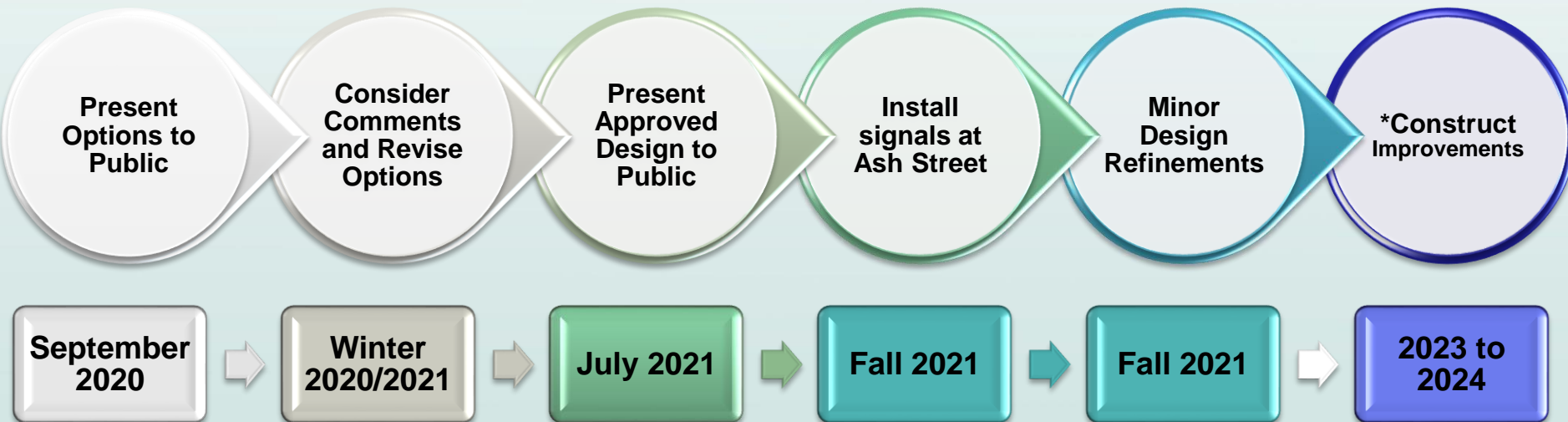


Functional Design for PTH 52 through the Community of Mitchell

Public Engagement
July 2021



Project Timeline



*Construction to commence when land acquisition is complete

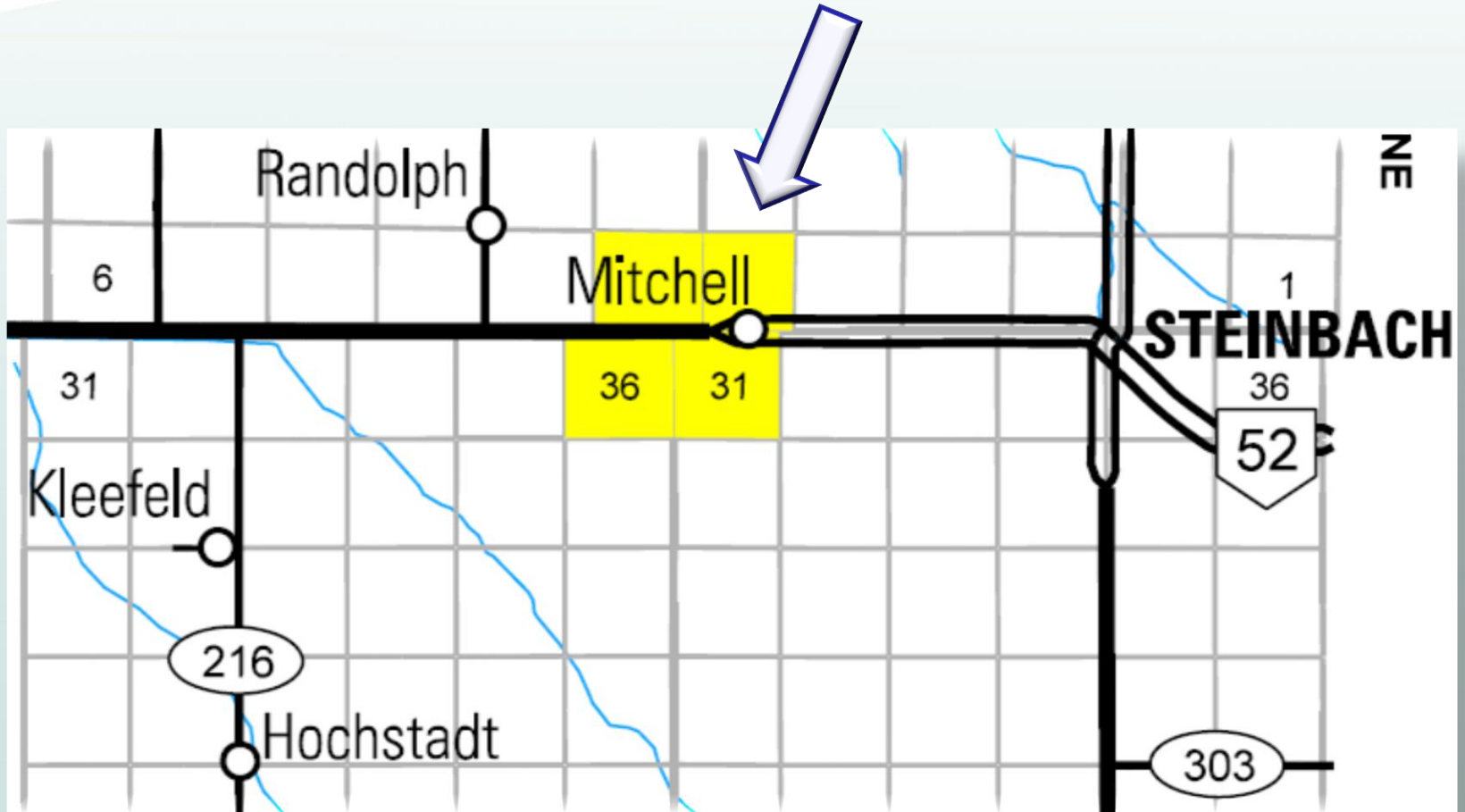
Background

- Previous public engagement held in September 2020. Key themes:



Materials can be reviewed here: <https://engagemb.ca/functional-design-of-highway-52>

Study Location



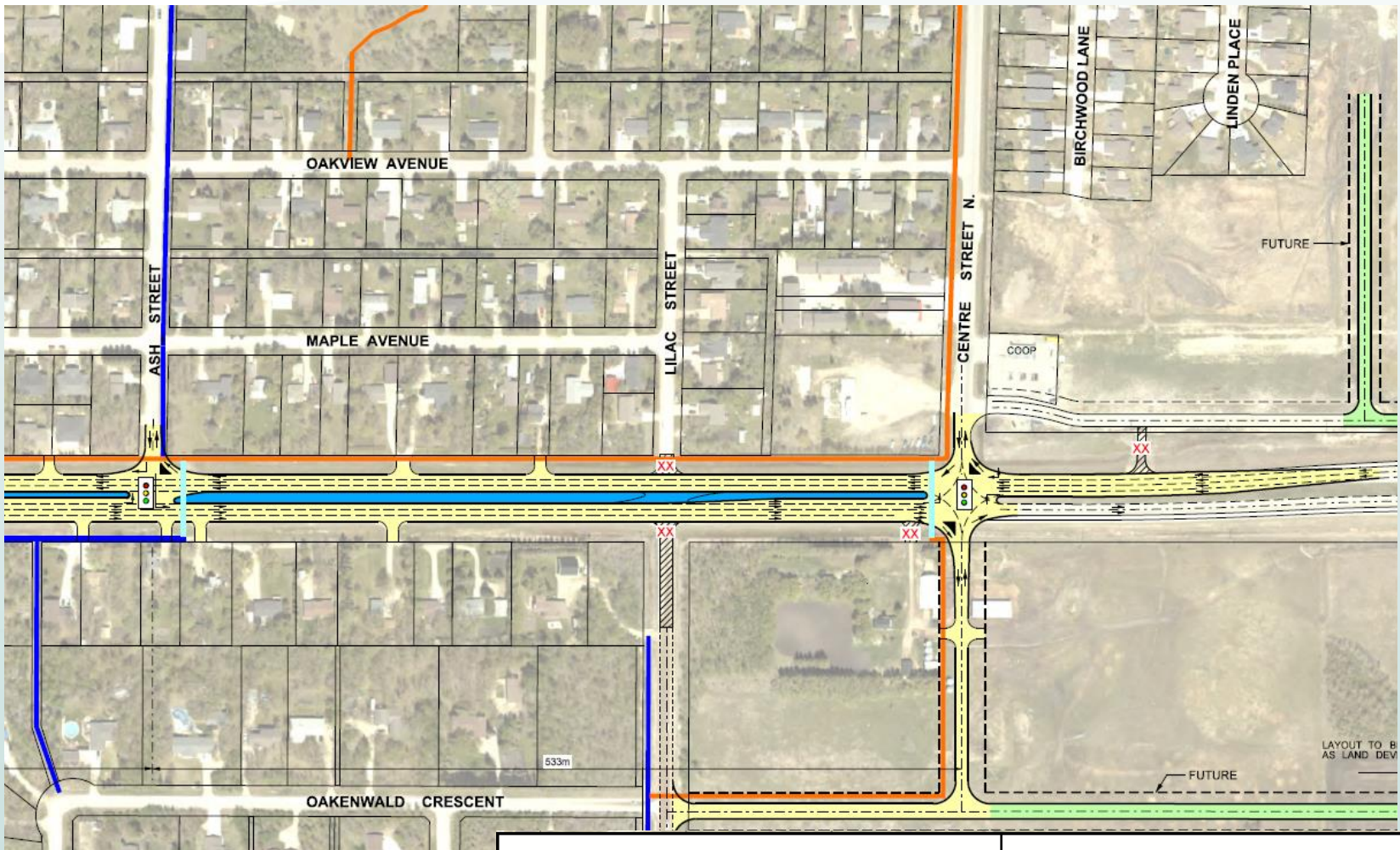
Options Presented in Fall 2020

- Three options were presented.
- The options and the feedback are located on the EngageMB.ca Website: [Fall 2020 Presentation](#).
- Excellent comments were received, including suggestions for further modifications to option 3.
- Based on the feedback received, option 3 was further developed to create the final functional design

Final Functional Design: Based on Feedback

- Today, Manitoba Infrastructure is presenting the approved final functional design for public review.
- The final functional design addresses many of the comments received and is supported by the RM of Hanover

Design - East Side



Note: a high resolution pdf map is available here: [LINK](#)



TRAFFIC SIGNALS WITH PEDESTRIAN CROSSWALKS- AS WARRANTED



STOP SIGNS



EXISTING ACCESS (TO BE REMOVED)



EXISTING ACCESS (TO REMAIN)

PROPOSED SIDEWALK / PATHWAYS (CONSTRUCTED BY MI)

PROPOSED SIDEWALK / PATHWAYS (CONSTRUCTED BY RMLUD)

EXISTING PATHWAYS

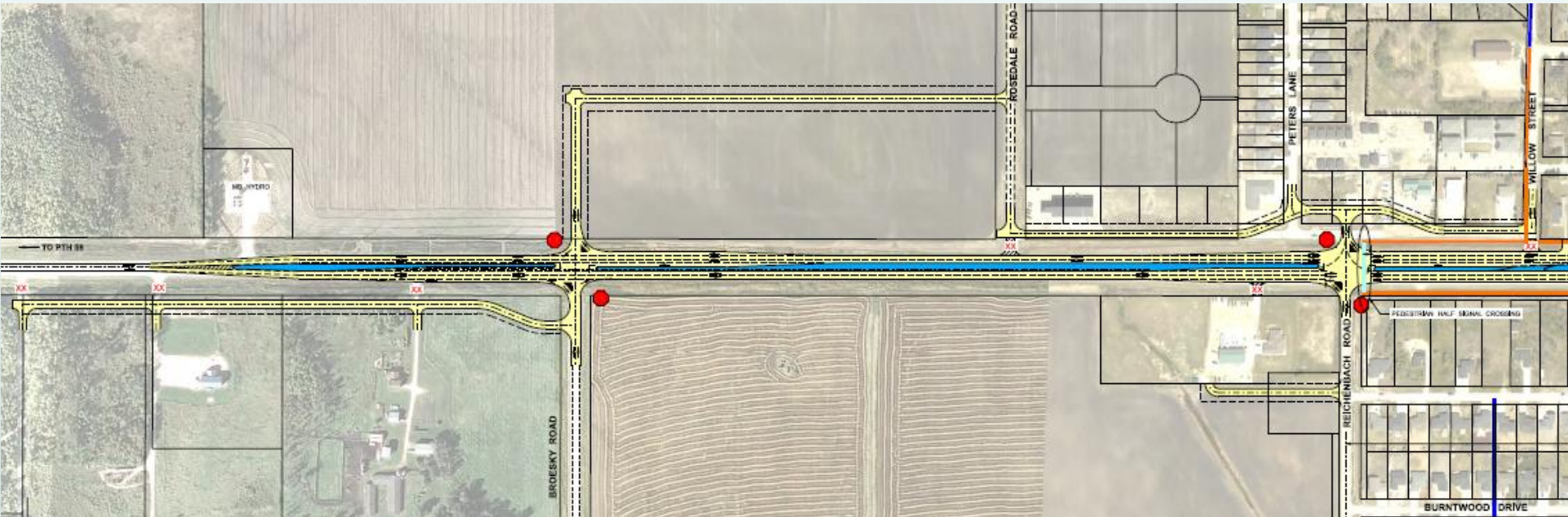
EXISTING PATHWAYS TO BE REMOVED

PROPOSED ROADWAYS


FUTURE ROADWAYS

PROPOSED PEDESTRIAN CROSSING

Design - West Side



Note: a high resolution pdf map is available here: [LINK](#)

	TRAFFIC SIGNALS WITH PEDESTRIAN CROSSWALKS- AS WARRANTED		PROPOSED SIDEWALK / PATHWAYS (CONSTRUCTED BY MI)
	STOP SIGNS		PROPOSED SIDEWALK / PATHWAYS (CONSTRUCTED BY RM/LUD)
	EXISTING ACCESS (TO BE REMOVED)		EXISTING PATHWAYS
	EXISTING ACCESS (TO REMAIN)		EXISTING PATHWAYS TO BE REMOVED
			PROPOSED ROADWAYS
			FUTURE ROADWAYS
			PROPOSED PEDESTRIAN CROSSING

Final Functional Design

Features:

- Fully developed intersections
 - Centre Street North
 - Ash Street
 - Reichenbach as previously presented in option 3
 - Broesky Road
- Service road on the north side of PTH 52 to Rosedale Road
- Service road access for properties located on the south side of PTH 52, west of Broesky Road

Final Functional Design

Advantages:

- Reopens Ash Street to all turning movements
- Allows for all turning movements at Reichenbach Road and adds an additional signalized pedestrian crossing at this intersection
- Separates industrial traffic on Rosedale Road from residential traffic on Reichenbach Road
- Allows farm equipment on Broesky Road to cross PTH 52 without having to travel along PTH 52

Next Steps

- We will review the public feedback from the current public engagement.
- Where necessary, we will make minor refinements to address any new concerns and begin purchasing land.
- We anticipate construction of the road improvements in 2023 and 2024 once land is acquired.
- In the meantime, Manitoba Infrastructure will install traffic signals at Ash Street in fall 2021 as an interim measure to address public concerns.

Other Public Questions

The feedback from the September 2020 public engagement included questions about Manitoba Infrastructure's general processes, guidelines, and practices for road safety and traffic management. Please refer to the links below for additional information.

Functional designs	https://www.gov.mb.ca/mit/hpd/functional.html
Managing road access, signs, structures, and developments	https://www.gov.mb.ca/mit/hpd/permits.html
Setting speed limits	https://www.gov.mb.ca/mit/traffic/pdf/speed/guide.pdf
Cyclist and pedestrian safety	https://www.gov.mb.ca/mit/active/index.html
School zone safety	https://www.gov.mb.ca/mit/traffic/school_safety.html
Traffic signals	<p>Staff assess an intersection and award it points based on sight lines, speed, turning movements, spacing, etc. If the intersection gets enough points, the department begins planning for signals. Technical information is available here:</p> <p>https://www.gov.mb.ca/mit/traffic/signal.html</p>

Thank you!

Please complete the online questionnaire to share your thoughts on the approved functional design.

If you have further questions, please contact us at:

E-mail: EORegion1@gov.mb.ca

Phone: 204-346-6266