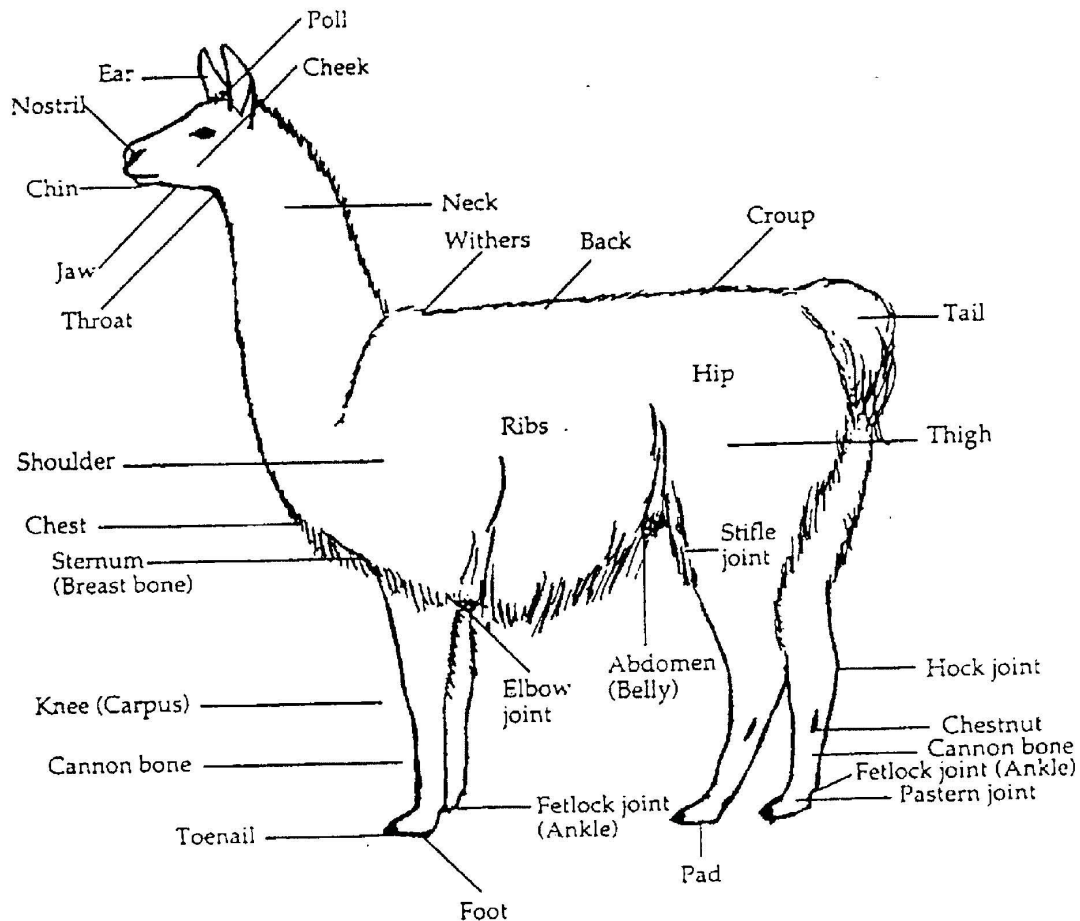




CANADA  
4-H Manitoba

# Judging Llama

## Parts of the Llama



### General Appearance

- Overall balance and style
- Muscling
- Condition
- Tail head setting
- Size, scale (average height is 40-45" at shoulder)
- Breed and sex character
- Well sprung rib

---

## Head and Neck

- Clear, bright eyes
- Teeth meet properly
- Ears shaped according to breed
- Medium to long length neck

## Feet and Legs

- Proper set to leg
- Sturdy thick bone
- Clean thighs and legs
- Strong, flexible pasterns
- Straight bones and front legs
- Legs nearly straight when viewed from rear

## Wool

- Good quality fibre
- Colour and type according to breed

## Movement

- Smooth gait
- Correct movement in front and rear legs
- No excessive head or tail movement
- Feet move in a straight line
- Correct length of stride
- Straight topline

## Disposition

- A hereditary trait
- Important in training llamas
- Especially important for pack llamas

Sections of the Judging Fact Sheets were adapted from the Alberta 4-H Judging Project Guide with the permission of the Alberta 4-H Council and the 4-H Ontario Judging Toolkit with the permission of the Ontario 4-H Council.

---

# Manitoba 4-H Contact Information

1129 Queens Avenue Brandon, MB R7A 1L9

Phone: 204-726-6136

Fax: 204-728-9040

Email: [learns@4h.mb.ca](mailto:learns@4h.mb.ca)

[www.4h.mb.ca](http://www.4h.mb.ca)