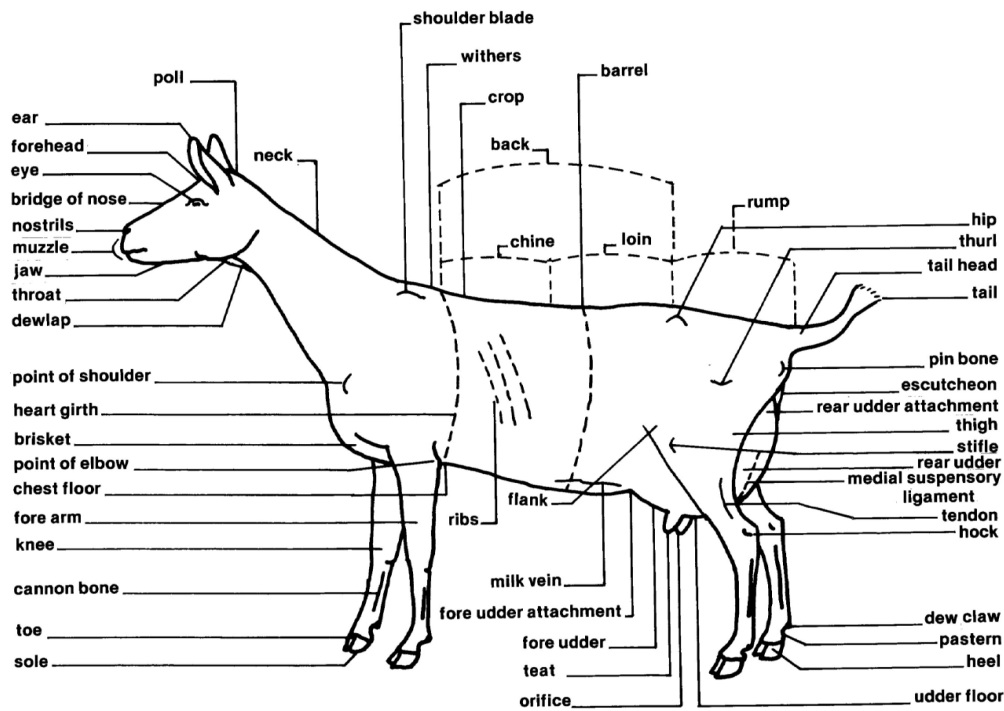




CANADA
4-H Manitoba

Judging Goats

Parts of the Goat

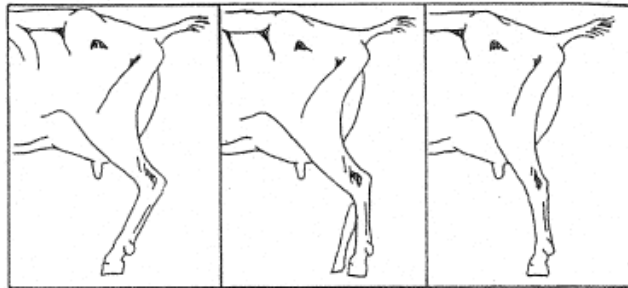


Judge's Eye

The ideal slope of rump should resemble the middle diagram. The goat on the left has an extremely steep slope of rump, while the goat on the right has a level rump; both undesirable characteristics.



The set of the rear legs should resemble the middle diagram. The goat on the left has extremely sickled legs, while the goat on the right has extremely posty rear legs; both undesirable sets of legs.



Dairy Goat Scorecard

	Perfect Score	
	Doe	Buck
General Appearance	35	54
<ul style="list-style-type: none"> • Attractive individually indicating femininity, vigour, strength and stretch with a harmonious blending and correlation of parts, impressive style and attractive carriage; graceful and powerful walk. 		
	Doe Buck	
<ul style="list-style-type: none"> • Style (includes shoulders) • Breed character and head • Topline • Rump • Feet and Legs 	5 5 5 8 12	8 8 8 10 20
Body Capacity	15	23
<ul style="list-style-type: none"> • Relatively large in proportion to the size of the animal, providing ample digestive capacity, strength and vigour; width throughout, starting at head <ul style="list-style-type: none"> • Wide, deep barrel and heart girth • Wide in head, full in crops • Wide through back and loin • Wide chest floor between front legs • Full at elbow 		
Dairy Character	15	23
<ul style="list-style-type: none"> • Animation, angularity, general openness and freedom from excess tissue, giving due regard to stage of lactation for does. <ul style="list-style-type: none"> • Long, lean neck blending into shoulders • Well-defined withers • Flat, long, well-sprung ribs • Fine-textured, loose, supple skin; fine hair • Lean and angular lines 		
Mammary System (Does only)	35	0
<ul style="list-style-type: none"> • A capacious, strongly attached, well-balanced udder of good quality, Indicating heavy production and a long period of usefulness. <ul style="list-style-type: none"> • Medial suspensory ligament, shape, texture ... 15 • Fore udder • Rear udder • Teats 	8 8 4	
Total	100	100

Market Kid Scorecard

	Perfect Score
General Appearance	30
• Quality and condition	15
• Well muscled, with smooth firm flesh	
• Clean, strong bone	
• Smooth, glossy hair and loose, supple skin	
• Size and development	15
• Size appropriate to age; high growth preferred	
Forequarters	25
• Shoulders	10
• Well muscled with smooth, firm flesh	
• Withers barely defined	
• Brisket	7
• Broad, deep and muscular	
• Forelegs	8
• Heavily muscled, round, clean bone	
• Strong, straight legs with strong flexible pasterns	
Hindquarters	25
• Rump	10
• Long and broad with smooth, firm flesh	
• Twist and Thighs	10
• Low, wide, well fleshed twist	
• Deep, wide, firm and muscular thighs	
• Hind legs	5
• Clean and strong bone	
Body	15
• Capacity	2
• Ample room for digestive system	
• Heart girth	2
• Large girth with wide chest floor	
• Fullness at point of elbow	
• Barrel	4
• Deep and broad; well supported	
• Loin	7
• Broad and strong with full, deep flanks	
Head and Neck	5
• Head	2
• Clear, bright eyes; large, open nostrils	
• Neck	3
• Medium length, strong and thick	
• Blending smoothly into shoulder and brisket	
Total	100



CANADA
4-H Manitoba

Sections of the Judging Fact Sheets were adapted from the Alberta 4-H Judging Project Guide with the permission of the Alberta 4-H Council and the 4-H Ontario Judging Toolkit with the permission of the Ontario 4-H Council.

4-H Manitoba Contact Information

1129 Queens Avenue Brandon, MB R7A 1L9

Phone: 204-726-6136

Fax: 204-728-9040

Email: learns@4h.mb.ca

www.4h.mb.ca