

Issue 8 – June 25, 2026

# Manitoba Potato Report



[Seasonal Reports](#)   [Weekly Weather Maps](#)   [Potato Production](#)

## Provincial Summary

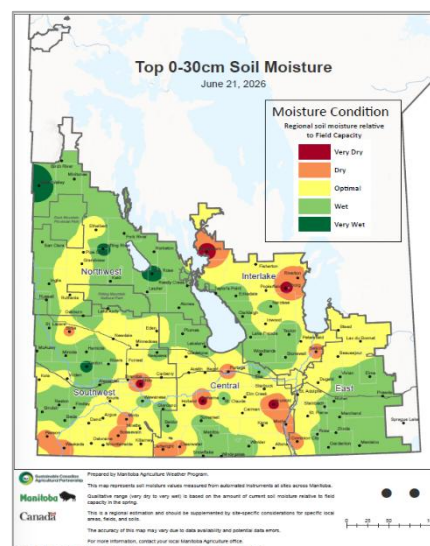
- The potato plants are at varying levels of growth, with ground cover ranging from 20 to 90% by June 22. The crops appear to be about 7-8 days behind last year.
- Hilling is nearly complete in most fields; and post-emergence weed control sprays have started.
- No late blight spores were trapped in the province from June 15-22.
- Aphid monitoring in the second week showed higher numbers for this early in season. High numbers of Potato Aphids were trapped but no green peach aphids. Colorado potato beetle mating adults and egg masses have been observed in many areas of the province.

## Ag Weather Data

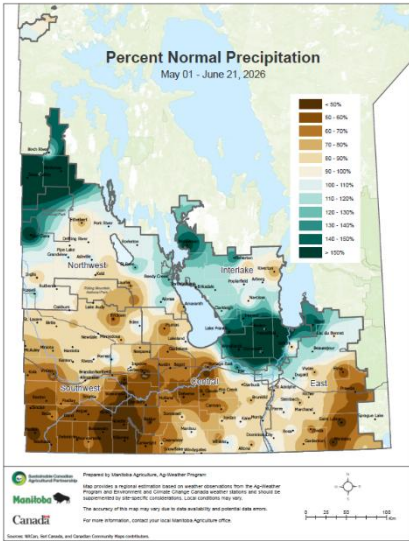
### Precipitation and Soil Moisture

- Scattered showers were reported across the province on June 18 and 20.
- Rainfall in the week (June 15-21) amounted to 1.0 to 2.0 mm (Bagot, Portage) to 24.4 mm (Holland) at various potato growing areas (Table 1). The week's rain did not change the cumulative precipitation (May 1 to June 21) as % of 30-year normal, ranging from ~40% (Carberry, Portage, Wawanesa & Shilo) to 94% (Rivers) and 111% (Winkler) (Table 1, Fig 2a).  
<http://www.gov.mb.ca/agriculture/weather/pubs/percent-normal-precipitation.pdf>.
- After low rainfall during the week, the soils at the 0-30 cm depth in potato growing areas changed from generally “wet” to “optimal” based on Regional Soil Moisture relative to Field Capacity as of June 21 (Fig 1) and remained “wet” at the 120 cm depth. <https://www.gov.mb.ca/agriculture/weather/pubs/soil-moisture-30cm.pdf> <https://www.gov.mb.ca/agriculture/weather/pubs/soil-moisture-120cm.pdf>

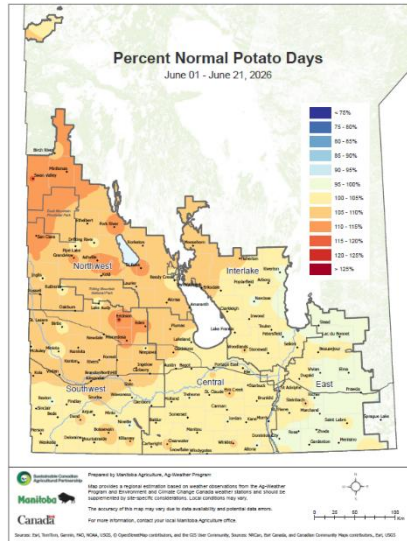
Fig 1. By June 21, soil moisture relative to field capacity at the 0-30 cm depth indicated generally “optimal” but with some areas with “wet” moisture conditions in potato-growing areas. At the 120 cm depth, soils were wetter (map not shown).



Report compiled by Dr. Vikram Bisht  
Potato and Horticulture Crop Pathologist, Manitoba Agriculture  
[Subscribe](#) to the weekly Potato Report



2a



2b

Fig 2a (left): Scattered rainfall from June 15-21 did not improve cumulative precipitation as a % of normal for the May 1 to June 21 period. Across Manitoba's potato growing areas, cumulative precipitation ranged from 40% to 111% of normal.

Fig 2b (right): The week had cooler daytime temperatures lowering the cumulative Potato Days (P-Days) from 110-120% to around 100 to 110% of normal across most potato-growing areas.

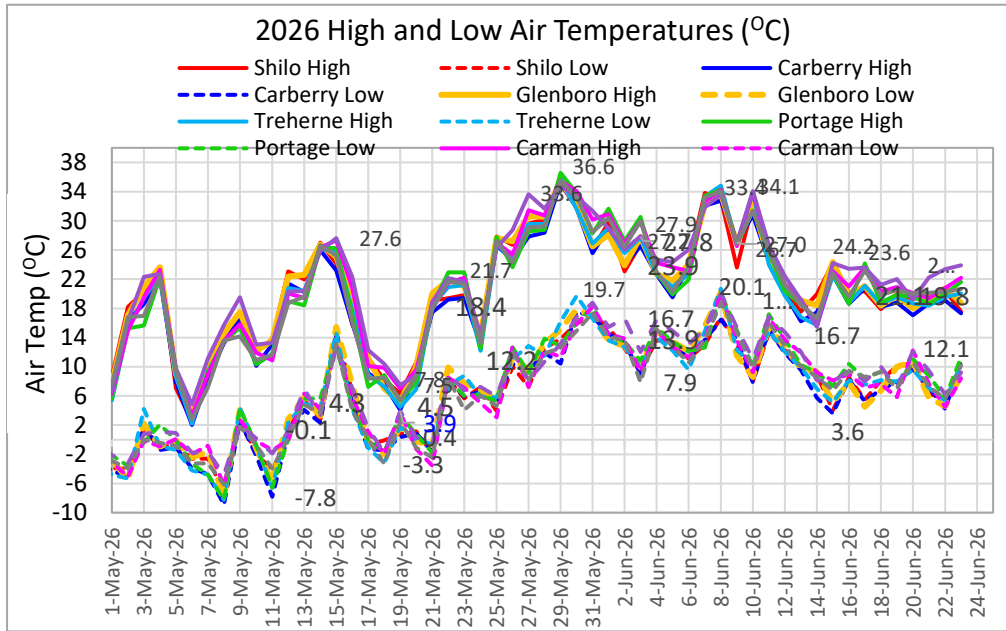


Fig 3: Daytime air temperatures in the potato-growing areas have become cooler after June 10 (>30°C) to now becoming mid-20s by June 21. Nighttime temperatures have been steady, ranging from 6 to 12°C in selected weather stations.

### Temperatures – Air and Soil

- From June 15-21, the daytime temperatures were warm in low to mid-20s, in most of the potato growing areas (Table 1, Fig 3). Overnight lows were similar to last week, ranging from around 3.9°C at Wawanesa to >6.2°C in St. Claude and Winkler (Table 1, Fig 3).
- Due to cooler days in the week, the Cumulative heat (Growing Degree Days, GDD base 5°C) was closer to 103-114% of normal (Table 1). The cumulative Potato Heat Units (P-Days) were 100 to 110% of 30-year normal (Fig 2 b) in the potato growing areas.
- Due to cooler daytime temperatures, the 5-cm depths the average soil temperatures stayed around 16-18°C in the week. During the week Bagot had the coolest soils, while Carberry, Treherne and Carman were the warmest (data not shown). At 20-cm depths the temperatures had similar trend but were 1-2 °C cooler. These temperatures are optimal for plant growth and tuberization.

**Table 1. Manitoba Ag Weather Data – June 16 - 21**

| Region      | Max Temp (°C) | Min Temp (°C) | Rainfall (mm) for the week | Rainfall (mm) (Since May 1) | 2026 Rainfall (% of normal) since May 1 | GDD (% of normal) |
|-------------|---------------|---------------|----------------------------|-----------------------------|---|-------------------|
| Altona      | 23.2          | 6.1           | 9.3                        | 101                         | 76                                      | 103               |
| Austin      | 22.9          | 4.9           | 9.5                        | 70                          | 62                                      | 109               |
| Bagot       | 23.2          | 5.6           | 1.0                        | 74                          | 63                                      | 107               |
| Carberry EC | 22.0          | 4.9           | 14.4                       | 48                          | 41                                      | 114               |
| Carman EC   | 23.8          | 4.6           | 4.7                        | 82                          | 61                                      | 108               |
| Glenboro    | 21.1          | 4.5           | 11.7                       | 67                          | 58                                      | 114               |
| Holland     | 21.5          | 5.9           | 24.4                       | 82                          | 67                                      | 113               |
| Morden      | 23.6          | 6.0           | 8.8                        | 83                          | 63                                      | 107               |
| Portage EC  | 24.2          | 5.9           | 2.0                        | 53                          | 46                                      | 111               |
| Rivers      | 19.8          | 5.1           | 16.6                       | 112                         | 91                                      | 112               |
| Shilo       | 20.5          | 5.5           | 14.0                       | 49                          | 43                                      | 110               |
| St. Claude  | 22.8          | 6.4           | 8.8                        | 70                          | 52                                      | 108               |
| Treherne    | 21.1          | 5.4           | 14.2                       | 62                          | 49                                      | 107               |
| Wawanesa    | 21.6          | 3.9           | 10.8                       | 51                          | 42                                      | 111               |
| Winkler     | 23.6          | 6.2           | 17.7                       | 154                         | 111                                     | 113               |

For more Manitoba weather information, visit: [www.gov.mb.ca/agriculture/weather](http://www.gov.mb.ca/agriculture/weather)

More information on:

Crop Water Demand (CWD) mm: [www.mbpotatoes.ca/cwd.cfm](http://www.mbpotatoes.ca/cwd.cfm)

P-Days: [www.mbpotatoes.ca/pday.cfm](http://www.mbpotatoes.ca/pday.cfm)

## Crop Progress

- By June 22 potato emergence across Manitoba was 75 to 100% of expected stands, and the ground cover with canopy ranged from 20 to 90% (Fig 4 a-d). Later planted fields have just emerged and are with up to 4-inch plants.
- The plants have reached up to 18-inch height in some early planted fields (Fig 4 c). Many of the early planted fields are showing early hooking and pea-sized tubers (Fig 5). Crops appear to be about a week behind last year's growth at the same time, when the crop canopy was nearly closed-in and having dime-size tubers around June 15 in 2025.
- Hilling and post-emerge weed control operations are in full swing in many areas.
- A few growers had just started irrigation, but scattered precipitations between June 22 to June 24 (52 hours) stopped the operation. The rain was quite widespread in Central and Southwest Manitoba, and inconsistent in amounts, ranging from 6.7 mm (Altona) to 47 mm in Carman in Central potato growing areas (Special Crop Weather Report June 22 to 24).
- Incidence of glyphosate affected tubers and sprouts were reported (Fig 6 a-d). Glyphosate-affected tubers have delayed emergence, with multiple sprouts which have “candelabra” appearance.
- There was a report of wire-like sprouts on a few tubers, and it suggests some tubers were physiologically too mature. This may happen when the tubers are exposed to heat stress (Fig 7 a).
- There was a report of Liberty (glufosinate) herbicide foliar injury - showing typical yellowing on leaves, close to Liberty-link canola field (Fig 7 b).
- There is a forecast for scattered showers and cloudy conditions at various locations from June 24 to 30, being widespread on June 28 - 29. The daytime temperatures are projected to be in the mid-20s; while the overnight lows are expected to be around 12-16°C till June 30. [Manitoba - Weather Conditions and Forecast by Locations - Environment Canada](#)

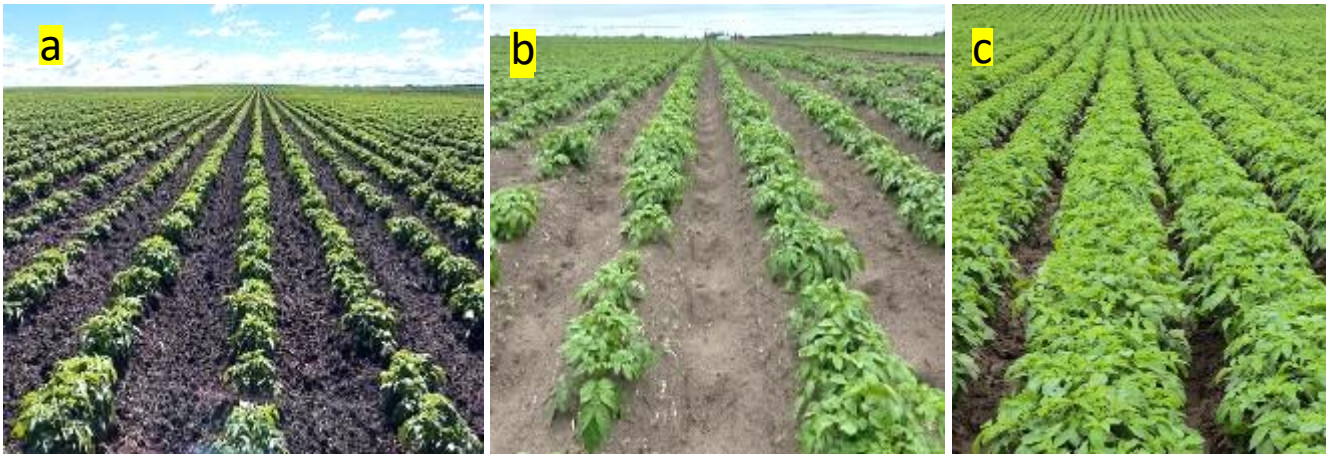


Fig 4. Ground cover ranges from 20% to 90%. a: Janelle Lavich (Choice Ag), b: Orla Sheridan (Shilo Farms), c: Melbourne - Kurtis McKee (JP Wiebe Farms).



Fig. 5: Many fields are at pin-head sized tubers stage. At this time in 2025, the tubers were dime-sized and the crops were further ahead by around 7-8 days; a: Carberry - Janelle Lavich (Choice Agri), b: Winkler - Harrison Loewen (KR Crop Check).





Fig. 6 a-d: Glyphosate in seed potatoes leads to poor and delayed emergence, and excessive sprouting on affected tubers. Irregular plant growth and uneven stand is a typical sign of glyphosate affected seeds. a-b: Vikram Bisht (Manitoba Agriculture), c: Steve Saunderson (Choice Agri), d: Scott Graham (Simplot).



Fig. 7 a: Wire-like sprouting often results from seed which is physiologically very mature / old due to excessive heat exposure. Greg Dyck (CropCare).

Fig. 7 b: Liberty (glufosinate) herbicide damage – often seen when potatoes are grown close to Liberty-link canola fields. Kurtis McKee (JP Wiebe farms).

## Disease Monitoring

- Late blight risk forecasting will be provided on a regional basis at [www.mbpotatoes.ca](http://www.mbpotatoes.ca). Late blight disease risk started accumulating from June 1.
  - The forecasting is complemented with late blight spore monitoring, using Spornado passive spore traps. Spore traps have been set up in many fields and monitoring began on June 8.
  - Results from the **2nd round of monitoring from June 15-22 showed that no *Phytophthora infestans* spores were trapped at any of the sites in the province.**
- Incidence of minor levels of bacterial soft rot and blackleg were reported from some fields, especially in wet patches of fields. Some root infections with *Rhizoctonia* sp. was reported (Fig 8 a,b).
- Early blight, verticillium wilt and powdery scab will be monitored during the season.
- Late blight risk maps, P-Days, and SprayCast maps are available <http://www.mbpotatoes.ca/index.cfm>.



Fig. 8 a: *Rhizoctonia* – root infected shows up as brown discoloration or pinching of the roots; b. a young plant showing wilting, was found to be infected with blackleg disease.

## Insect Pest Monitoring

- Aphid monitoring using suction and pan traps have been set up in seven of eight seed potato fields (Fig 9 a, b); pan traps will be set up in some more fields after hilling is completed in these fields.
  - The second week's collection was done on June 22; the monitoring started a week before normally done to see if there are aphids present before the plants canopy growth. In many fields the plants were up to 4 to 8" tall by June 22.
  - Aphid counts showed higher numbers of non-colonizing aphids and Potato Aphid (PAs), but no Green peach aphids were trapped (Table 2). It is unusual to see such high numbers of non-colonizers and 2 to 6 PAs in 3 seed fields this early in the season.
- European Corn Borer monitoring Delta traps were set up in some fields on June 22.
- Colorado potato beetles (CPB) were seen feeding on potato plants in many areas.
  - Egg masses were reported from Winkler, Melbourne, Carberry, Rathwell and Carman (Fig 10 a-d), suggesting that the seed treatment insecticides are less effective or the population has some resistance and the first instar larvae may emerge soon.



Fig. 9 a, b: Aphid monitoring is done using a suction trap and two yellow pans to trap aphids in or near the seed field.

Table 2. Weekly Aphid Report – Week 2 (June 8 - 15) 2026

| Field #                | Town         | RM                     | Green Peach Aphid | Potato Aphid | Other Aphids | Total * | ALH | PLH | Comments                      |
|------------------------|--------------|------------------------|-------------------|--------------|--------------|---------|-----|-----|-------------------------------|
| <b>Southern Region</b> |              |                        |                   |              |              |         |     |     |                               |
| Field 1-H              | Winker       | Stanley                | 0                 | 4            | 6            | 10      | 0   | 0   | Suction & Pan traps. 4 thrips |
| Field 2-K              | Stephenfield | Dufferin               | 0                 | 0            | 0            | 0       | 1   | 0   | Suction & Pan traps           |
| Field 3-S              | Winkler      | Rhineland              | -                 | -            | -            | -       | -   | -   | Sample not received           |
| <b>Central Region</b>  |              |                        |                   |              |              |         |     |     |                               |
| Field 4-S              | Holland      | Victoria               | 0                 | 6            | 18           | 24      | 0   | 1   | Pan traps only                |
| Field 5-S              | Glenora      | Argyle                 | 0                 | 0            | 16           | 16      | 0   | 0   | Pan traps only                |
| Field 6-S              | Westbourne   | Portage La Prairie     | 0                 | 0            | 0            | 0       | 0   | 0   | Suction only                  |
| <b>Western Region</b>  |              |                        |                   |              |              |         |     |     |                               |
| Field 7-A              | Wellwood     | North Cypress-Langford | 0                 | 0            | 12           | 12      | 0   | 0   | Suction only                  |
| Field 8-S              | Carberry     |                        | 0                 | 2            | 17           | 19      | 0   | 0   | Suction only                  |

- The aphid counts are a summation from a suction and pan traps but pan traps could not be set up in some potato fields, waiting for hilling and other ground equipment operations.
- “-” indicates samples not received.
- ALH = Aster leafhopper, PLH = Potato leafhopper

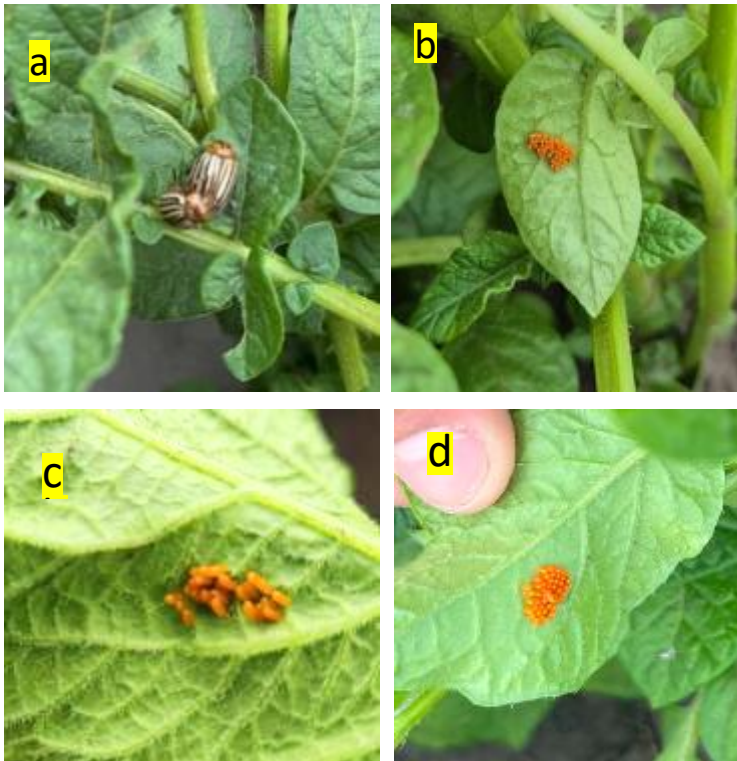


Fig. 10 a: CPB adults mating on potato plants – Carman- Vikram Bisht (Manitoba Agriculture); Egg masses are now being noticed in many areas. b: Greg Dyck (Crop Care)-Carberry; c: Kurtis McKee (JP Wiebe Farms)- Melbourne, d: Ethan Friesen (MB Agriculture) – McGregor.

Growers and industry stakeholders, please report or submit for diagnosis, any disease or insect observations of importance. If you suspect late blight disease in your area, please contact [vikram.bisht@gov.mb.ca](mailto:vikram.bisht@gov.mb.ca)

All reports and information will also be available at <http://www.mbpotatoes.ca/index.cfm> and also archived at [Province of Manitoba | agriculture - Potato Report](#).