

GeoFile 5-2023 ReadMe

Updates to the Manitoba Mineral Deposits Database

by M.L. Rinne
Manitoba Geological Survey
Winnipeg, 2023



© King's Printer for Manitoba, 2023

Every possible effort is made to ensure the accuracy of the information contained in this report, but Manitoba Economic Development, Investment, Trade and Natural Resources does not assume any liability for errors that may occur. Source references are included in the report and users should verify critical information.

Any third party digital data and software accompanying this publication are supplied on the understanding that they are for the sole use of the licensee, and will not be redistributed in any form, in whole or in part. Any references to proprietary software in the documentation and/or any use of proprietary data formats in this release do not constitute endorsement by Manitoba Economic Development, Investment, Trade and Natural Resources of any manufacturer's product.

When using information from this publication in other publications or presentations, due acknowledgment should be given to the Manitoba Geological Survey. The following reference format is recommended:

Rinne, M.L. 2023: Updates to the Manitoba Mineral Deposits Database; Manitoba Economic Development, Investment, Trade and Natural Resources, Manitoba Geological Survey, GeoFile 5-2023, Microsoft® Excel® file.

NTS grid: parts of NTS 52, 53, 54, 62, 63, 64

Published by:

Manitoba Economic Development, Investment, Trade and Natural Resources
Manitoba Geological Survey
360–1395 Ellice Avenue
Winnipeg, Manitoba
R3G 3P2 Canada

Telephone: 1-800-223-5215 (General Enquiry)

204-945-6569 (Publication Sales)

Fax: 204-945-8427

Email: minesinfo@gov.mb.ca

Website: manitoba.ca/minerals

This publication supersedes GeoFile 5-2022.

This publication is available to download free of charge at manitoba.ca/minerals.

Abstract

This GeoFile contains updates to Manitoba's Mineral Deposits Database, including recently compiled and revised mineral occurrence data for all parts of Manitoba north of 57°N, and large sections of the Superior province. In combination with other geoscientific data, these results can be used to inform mineral potential assessments, exploration targeting, or land-use planning. Further updates to this compilation will be published as work proceeds by region.

Résumé

Le présent géodossier contient des mises à jour de la base de données des gisements du Manitoba, notamment des données récemment recueillies et révisées sur les occurrences minérales de toutes les parties du Manitoba au nord du 57^e parallèle et de grandes portions de la province du lac Supérieur. Utilisés avec d'autres données géoscientifiques, ces résultats peuvent être utilisés pour parfaire l'évaluation d'un potentiel minier, mieux cibler les zones d'exploration ou informer l'aménagement du territoire. D'autres mises à jour de cette compilation seront publiées au fur et à mesure de l'avancement des travaux, région par région.

DIGITAL DATA

Zip file geofile5.zip contains the following content:

- GeoFile_5-2023_ReadMe.pdf (this file)
- GeoFile_5-2023.xlsx (mineral occurrence data in parts of NTS 52–54, 62–64)

Introduction

The Mineral Deposits Database (MDD) serves as the primary inventory of mineral occurrence data in Manitoba. Beginning in 2020, the Manitoba Geological Survey (MGS) has been updating the MDD in order to remove errors or insignificant results from the previous version, to improve spatial coverage, to expand the number of commodities captured, and to compile relevant geochemical data in a way that can be easily queried or filtered for mineral potential assessments or other purposes.

Preliminary mineral occurrence data in this update are provided in the Excel® table named GeoFile_5-2023.xlsx. Most of the mineral occurrence data are derived from industry assessment reports. For more information regarding the MDD update project, including an explanation of the project rationale, sources of data, and recent improvements to the data collection methods used, see Rinne (2021).

Overview

A total of 17 107 mineral occurrences are included in this update, with locations shown in Figure 1. For more detailed views of these occurrences by region, including discussions of some of the more significant findings, refer to Rinne (2020) or Rinne (2021).

Mineral occurrences compiled in the MDD are generally limited to observations or geochemical data from outcrop, drill-core, or (less commonly) boulders. Caution should be exercised with boulders, as they have likely been transported by glaciers and are not representative of an in situ bedrock occurrence. This database is not designed to capture other sample media such as soils, tills or vegetation, though rare cases such as visible gold grains reported in sediment may qualify as discretionary occurrences.

Relevant geochemical results are recorded for each occurrence wherever available (see “Geochemical data columns” below). Such data can reveal spatial variations of some commodities, can be filtered to exclude lower values, and can feed directly into mineral potential assessments and related products. However, users should be aware that the MDD is not a carefully curated geochemical database. It includes data from many sources covering approximately a century of mineral exploration work in Manitoba, some of which involved questionable lab methods or poor quality control. Users should therefore verify any critical information.

Column names

Columns in the Excel® table (GeoFile_5-2023.xlsx) are explained below. In response to client requests for more preliminary mineral occurrence data, many columns are only partially completed as of 2023. Missing data will be populated or changed as future iterations of this dataset (GeoFile 5) are published.

NTS 50k area

The National Topographic System (NTS) 1:50 000 map sheet in which the occurrence is located.

MDD number

A unique identifier assigned to every mineral occurrence in Manitoba, beginning with the NTS 50k area (e.g., 54D/16) followed by a 3-digit number. The ordering of numbered occurrences in each NTS block is arbitrary. Missing numbers in some sequences correspond to irrelevant or insignificant entries that were deliberately removed from an earlier (Conley et al., 2009) version of the MDD. In general, entries with MDD numbers that lack other information (such as assay data or commodities of interest) are previous MDD entries that have not yet been reviewed.

Occurrence classification

“Occurrence” – Denotes a mineral occurrence that meets one or more of the mineral or geochemical occurrence criteria defined in Table 1. Refer to Rinne (2021) for more information regarding the selection of these criteria.

“Occurrence with resource estimate” – Describes occurrences with grade and tonnage estimates (not necessarily NI 43-101 compliant), typically limited to better developed mineral prospects or deposits.

“Discretionary occurrence” – Assigned to features or results that do not strictly meet the requirements in Table 1 but are deemed to be of possible interest to MDD users, such as tentative or unconfirmed observations of important rock types, or potentially significant mineral findings that lack geochemical data.

Sample Type

Qualifies the sample medium or location. Categories in this update include: Surface (i.e., samples collected from outcrop); Subsurface (i.e., in drillcore or mine samples); Boulder (particularly relevant in the Wollaston domain); and Sediment (in the case of a few gold occurrences).

MDD name; Alternate MDD name

The name(s) of the mineral occurrence, usually informal (e.g., “Mountain Rapids fluorite occurrence”). In the interest of compiling and releasing occurrence information as quickly as possible, these fields are left blank in most new occurrence entries.

Easting (NAD83 Z14), Northing (NAD83 Z14)

Occurrence coordinates, all projected to UTM NAD83 Zone 14.

Location qualifier

“Actual” – Denotes well-constrained location data (Easting and Northing columns) based on sample coordinates listed in assessment reports, detailed sample location maps, or GPS coordinates

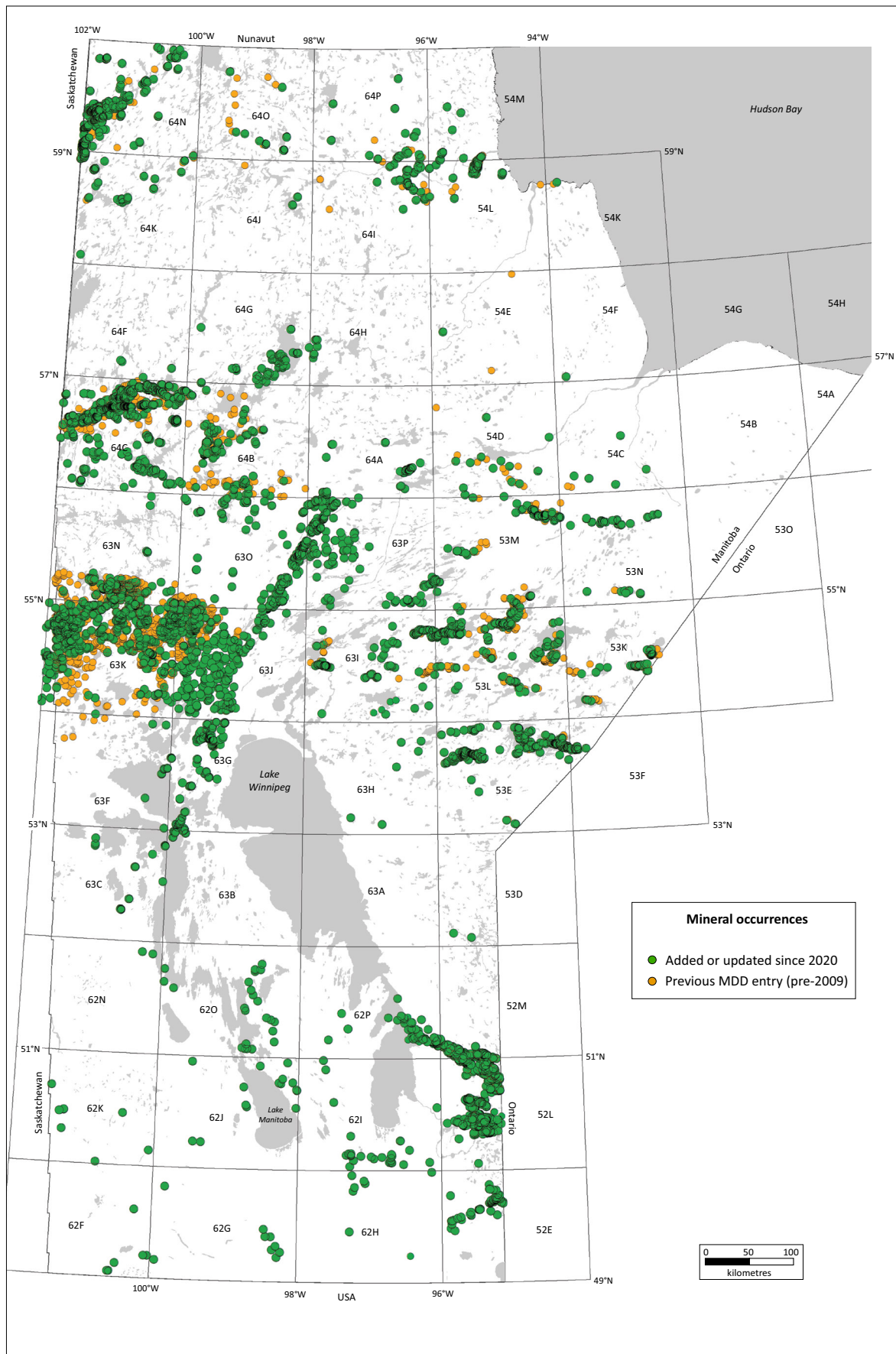


Figure 1: Map showing updated mineral occurrence locations in Manitoba. All points shown here are provided in *GeoFile_5-2023.xlsx*, though many are preliminary data that may change in future updates.

Table 1: Minimum grade or mineral criteria for occurrence classification in the MDD.

Commodity	Minimum grade or mineral content for occurrence classification	Commodity	Minimum grade or mineral content for occurrence classification
Ag	>35 ppm (>1 opt ¹)	Ni	>800 ppm
Au	>0.5 ppm (>0.015 opt ¹) OR visible gold	Pb	>10 000 ppm
Al	Bauxite or gibbsite present	PGE ³ (Pt + Pd + Rh + Ir + Ru + Os)	>0.5 ppm total PGE
As	Evaluation ²	P	>10% P ₂ O ₅
B	>10 000 ppm (>1%) OR minerals present (e.g., ulexite, borax)	Potash	>7.5% potash
Ba	>30 000 ppm Ba OR >5% barite	Rb	>1000 ppm
Be	>50 ppm OR minerals present (e.g., beryl, bertrandite)	Re	>10 ppm
Bi	>500 ppm	REE ⁴ (lanthanides + Sc, Y)	>0.3% total rare-earth oxides OR minerals present (e.g., monazite) OR La, Ce, Nd, Sc or Y >500 ppm OR Pr, Sm, Gd, Dy, Er or Yb >50 ppm OR Eu, Tb, Ho, Tm or Lu >10 ppm
Graphite	>5% OR present as coarse flakes or seams	Sb	>500 ppm
Co	>200 ppm	Se	>100 ppm
Coal (metallurgical)	Evaluation ²	Si	Quartzite >5 m thick OR high-purity silica sand
Cr	>10 000 ppm (>1.5% Cr ₂ O ₃)	Sn	>1000 ppm
Cs	>1000 ppm OR minerals present (e.g., pollucite)	Sr	>50 000 ppm (>5%) OR minerals present (e.g., celestite)
Cu	>2500 ppm	Ta	>100 ppm OR minerals present (e.g., tantalite, pyrochlore)
Diamond	Mineral present	Te	>100 ppm
F	>1% F OR >2% fluorite	Th	>250 ppm OR minerals present (e.g., monazite)
Fe	>12.5% (>16.1% FeO or >17.9% Fe ₂ O ₃) AND unit >5 m thick	Ti	>7.5% TiO ₂ (>45 000 ppm Ti)
Ga	>100 ppm	Tl	>100 ppm
Ge	>30 ppm	U	>250 ppm (>0.03% U ₃ O ₈) OR minerals present
Gypsum	>40%	V	>1000 ppm
He	>0.3 mol. % (from natural gas production)	W	>500 ppm
Hf	>150 ppm	Zn	>1000 ppm
In	>5 ppm	Zr	>5000 ppm
Li	>1000 ppm Li (>0.2% Li ₂ O) OR minerals present (e.g., spodumene, lepidolite, petalite) OR >30 ppm Li in brines	Other (e.g., carbonatite, kimberlite and related rocks, semi-precious gemstones, high-purity limestone)	Evaluation ²
Mg	>10% magnesite (MgCO ₃) OR >15% brucite (Mg(OH) ₂) OR >10% carnallite		
Mn	>50 000 ppm (>6.5% MnO)		
Mo	>200 ppm		
Nb	>200 ppm OR minerals present (e.g., columbite, pyrochlore)		

¹ opt, Troy ounces per short ton² Requires review by a geologist to determine whether the occurrence is significant³ PGE, platinum-group element⁴ REE, rare-earth element

of MGS samples. Location error is likely between five and one hundred metres in most cases.

“Estimated” – Location data from sample location maps with a moderate degree of confidence (typically from maps lacking sufficient detail). Location error is likely within a few hundred metres in most cases.

“Roughly estimated” – Locations are not well-constrained, based mostly on text descriptions of locations or regional-scale sample maps. Location error may be up to a few kilometres in some cases. Depending on the data available, some of these locations may be refined in future updates.

“Drill collar location” – Mineral occurrences in drillcore are shown at collar (top of hole) locations, rather than projected vertically to surface. Most drill collar locations were compiled by past assessment geologists over several decades, and may differ from actual drill locations; as in other parts of this database, users should verify critical information.

Added by; Date added; Updated by; Date updated

Fields to track updates, including occurrences added to the MDD since 2009, and updates to existing entries that mainly involved the addition of geochemical data and edits to the occurrence description text.

Commodities or feature of interest

Contains a comma-separated list of commodities in each mineral occurrence. In most cases, this is simply a list of elements in which the occurrence minimum values have been exceeded in the sample(s); in some cases the listed features also include potentially significant rock types (e.g., lamprophyre, carbonatite) or minerals (e.g., coarse graphite in drillcore).

Data source

Lists assessment report numbers or other sources relating to the occurrence. Other sources in this release include preliminary maps by the Geological Survey of Canada and MGS geochemical data releases.

Scans of industry assessment reports (with 5-digit report numbers) can be accessed through the Manitoba government’s iMaQs online portal or GIS Map Gallery viewing tools. Most of the “Mineral Inventory Card” records have not been reviewed in detail; information relating to these occurrences can be found at <https://manitoba.ca/iem/info/library/index.html#sc>.

Comments / occurrence description

Text descriptions are taken mostly from previous entries, and updated or edited where necessary. In the interest of compiling and releasing occurrence information as quickly as possible, this field is left blank in most new occurrence entries.

Sample ID

Sample identification number from original report(s). Other identifying information (e.g., trench number or local grid coordinates) may be provided in cases where a sample ID is not clearly indicated.

Drillhole ID

Name or identification number of the drillhole intersecting the occurrence, if applicable.

Geochemical data columns

Geochemical data are recorded in alphabetical order from columns “Ag (opt)” through “Zr (ppm).” Unspecified units as in the “Ni (unspecified)” column are from reports in which concentration units are not indicated, though the appropriate unit can usually be inferred from context. The right-most column named “Other” captures mineral occurrence or related geochemical data that are not listed elsewhere; most entries in this column relate to significant mineral observations such as coarse graphite in drillcore.

References

- Conley, G.G., Heine, T.H., Prouse, D.E. and Leskiw, P.D. 2009: Mineral Deposits Database; Manitoba Science, Technology, Energy and Mines, Manitoba Geological Survey, URL <<https://manitoba.ca/iem/geo/gis/databases.html>> [October 2023].
- Rinne, M.L. 2020: Progress report on updates to the Manitoba Mineral Deposits Database, east-central Manitoba (NTS 53E, F); *in* Report of Activities 2020, Manitoba Agriculture and Resource Development, Manitoba Geological Survey, p. 9–12, URL <<https://manitoba.ca/iem/geo/field/roa20pdfs/GS2020-2.pdf>> [October 2023].
- Rinne, M.L. 2021: Updates to the Manitoba Mineral Deposits Database, east-central and northwestern Manitoba (NTS 53E, F, 64J, K, N, O); *in* Report of Activities 2021, Manitoba Agriculture and Resource Development, Manitoba Geological Survey, p. 1–7, URL <<https://manitoba.ca/iem/geo/field/roa21pdfs/GS2021-1.pdf>> [June 2022].