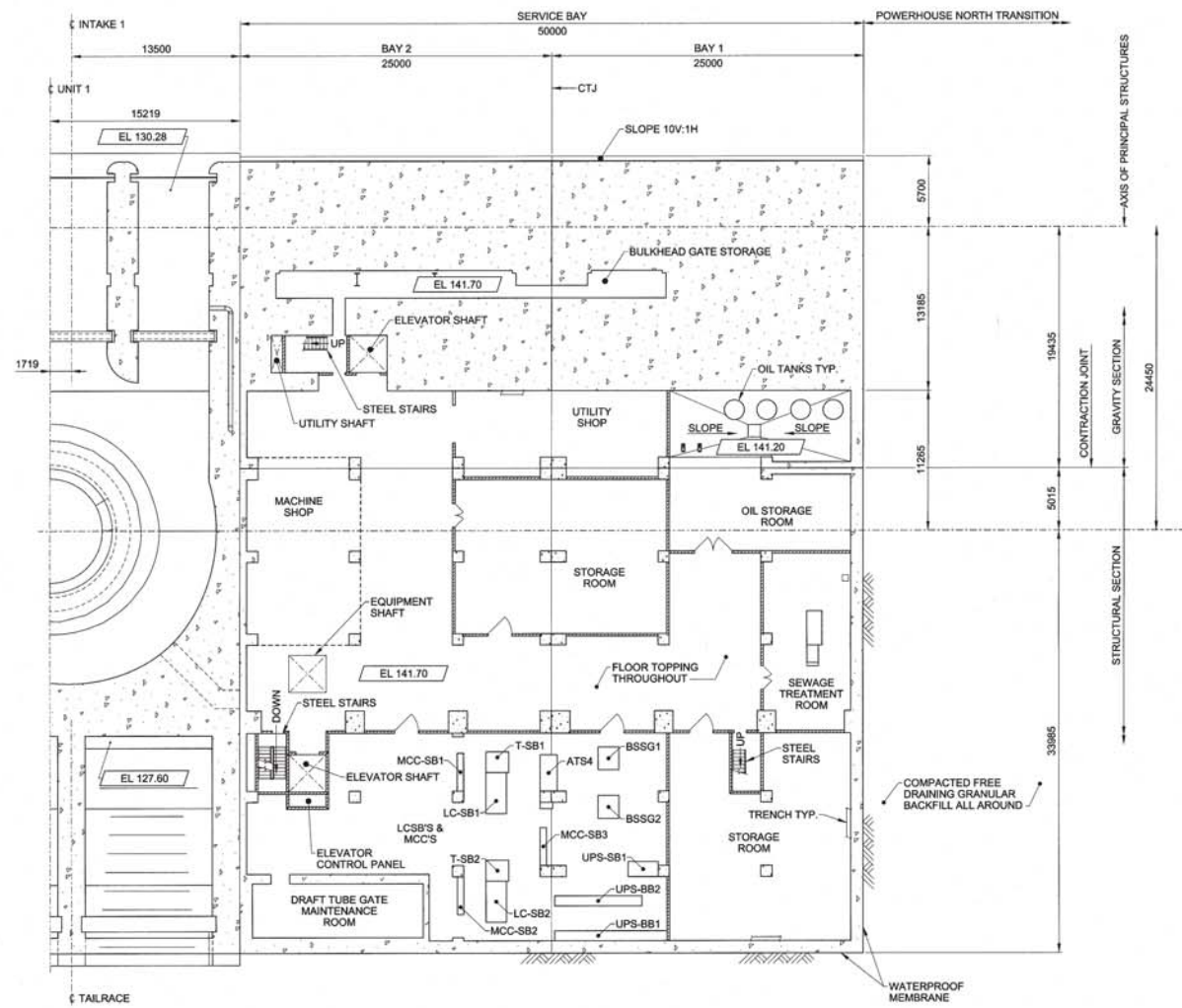
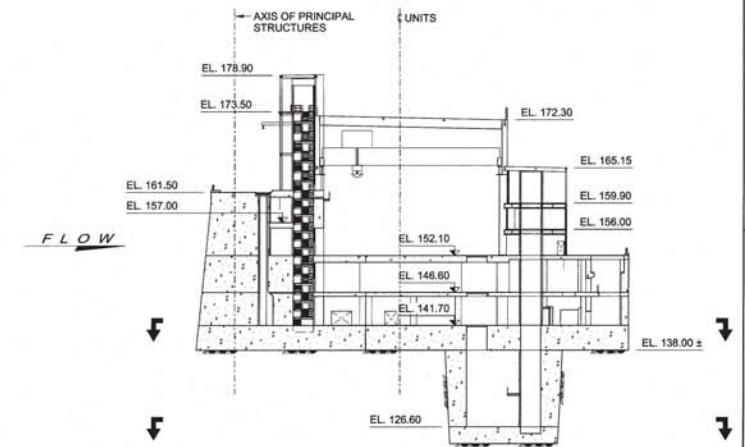


PLAN AT EL 126.60



PLAN AT EL 141.70



KEY SECTION

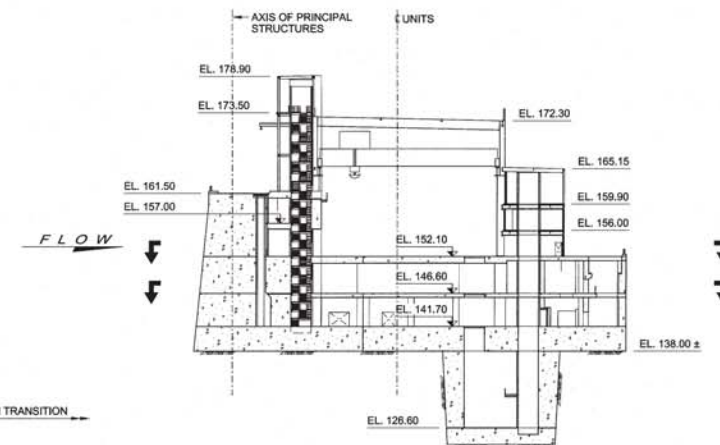
- LEGEND:**
- ELECTRICAL EQUIPMENT
- BSSG BLACK START SWITCHGEAR
  - UPS-BB UPS BATTERY BANK
  - UPS-SB EMERGENCY LIGHTING UPS
  - LC-SB 600V SERVICE BAY LOAD CENTRE
  - ATS AUTOMATIC TRANSFER SWITCH
  - T-SB 600V SERVICE BAY TRANSFORMER
  - MCC-SB 600V SERVICE BAY MOTOR CONTROL CENTRE

- NOTES:**
1. THE ROOM LAYOUT SHOWN IS PRELIMINARY. FINAL LAYOUT AND EGRESS REQUIREMENTS ARE TO BE DEVELOPED DURING FINAL DESIGN IN ACCORDANCE WITH NBCC REQUIREMENTS.
  2. EMBEDDED PIPES NOT SHOWN ON THE DRAWING FOR CLARITY.
  3. FLOOR SLOPES NOT SHOWN FOR CLARITY.
  4. FLOOR FINISHES FOR TOPPING SHALL BE U3-TROWELLED TYPE FINISHING.
  5. WATERSTOPS NOT SHOWN FOR CLARITY. IN GENERAL TWO LINES OF PVC-RIBBED WATERSTOPS ARE REQUIRED FOR ALL CONSTRUCTION AND CONTRACTION JOINTS.

<b>Issued for Proposal – RFP 016203</b> DO NOT USE FOR CONSTRUCTION 2013-03-28					
REV.	DATE	DESCRIPTION	BAR	RM	WLM
00	2012 02 12	ISSUED FOR INFORMATION			
1			BY	CHKD.	APP.P. ENG.
DRAWN:		CHECKED:	SCALE:		
S. POLINCHUK			1:200		
DESIGNED:		CHECKED:	DATE:		
D.B. DRAKE					
<b>KEYASK GENERATING STATION</b> <b>BASIS FOR DESIGN</b> <b>GENERAL ARRANGEMENT</b> <b>SERVICE BAY</b> <b>PLANS AT EL 126.6 &amp; EL 141.7</b>					
DRAWING NUMBER		SHEET		REVISION	
1-00195-DE-06200-0030		0001		OC	

**HATCH**  
 HA DWG. NO. H341433-5550-00-042-0002  
 AREA COORD. W. MILLIONS DATE  
 DISCIPL. ENGR. W. MILLIONS DATE  
 PROJ. ENGR. A. TRUDEL DATE  
 PROJ. MGR. W. GENZEL DATE

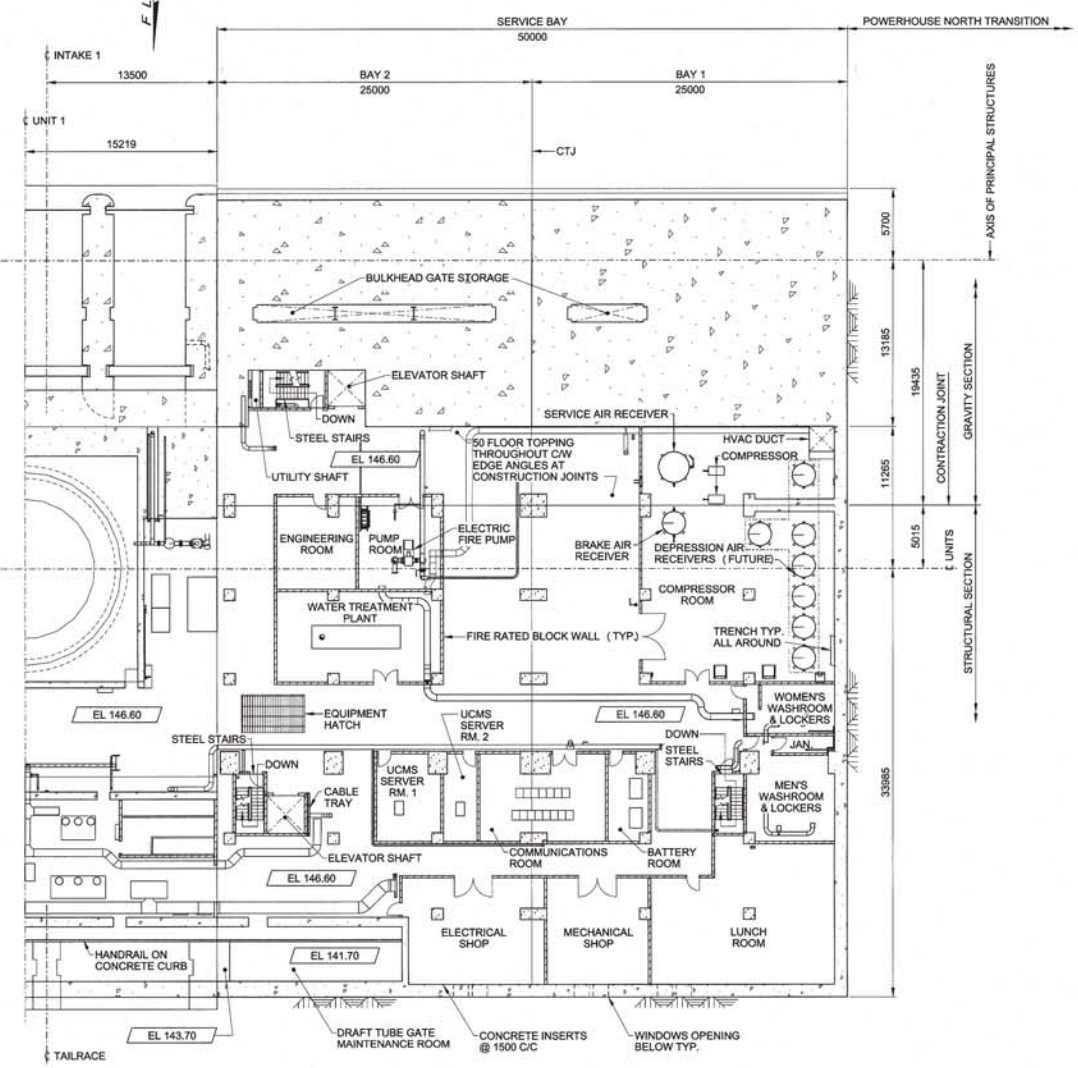
**Manitoba Hydro**  
 AUTHENTICATION FOR CURRENT REVISION



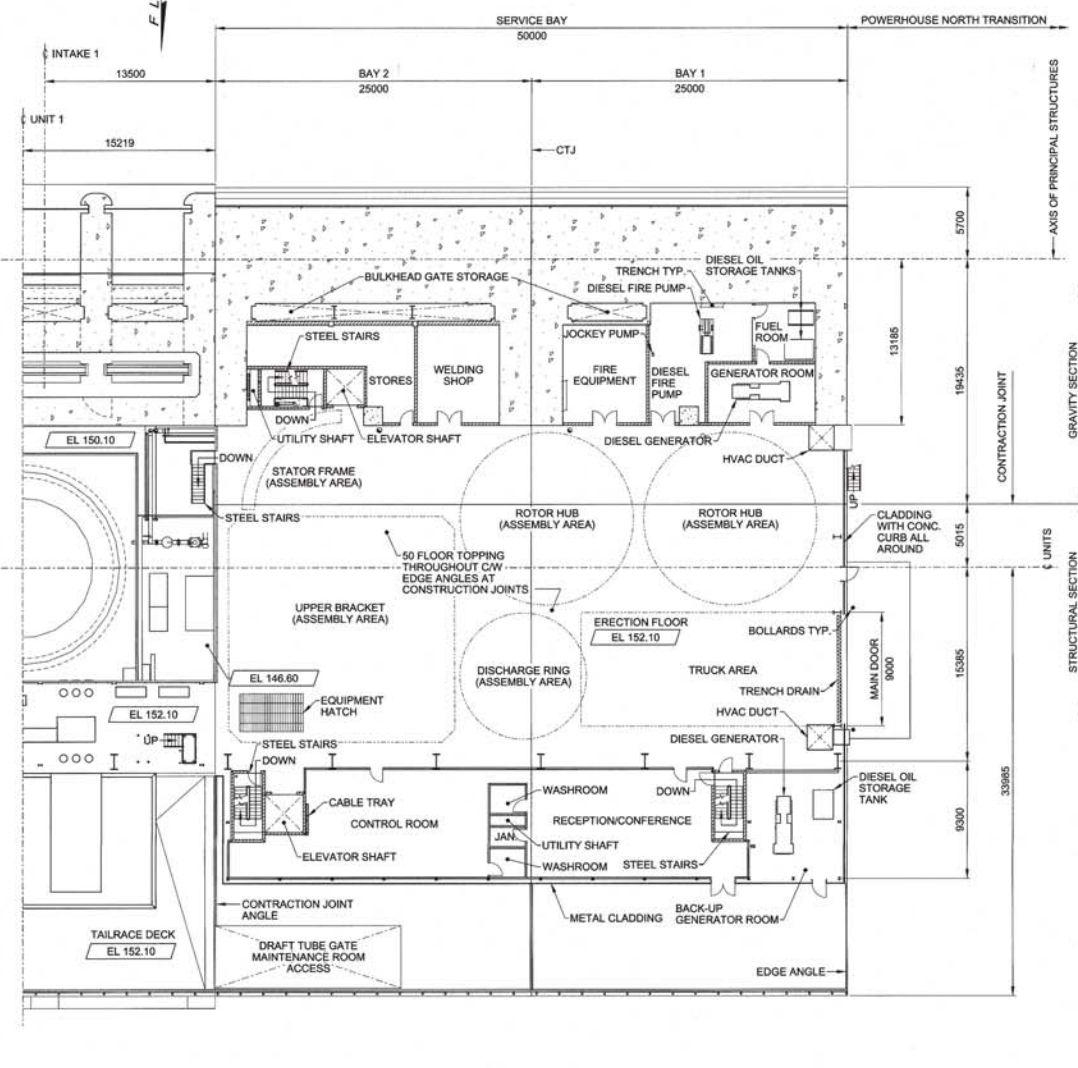
**KEY SECTION**

- LEGEND:**
- UCMS UNIT CONTROL & MONITORING SYSTEM
  - HVAC HEATING VENTILATION & AIR CONDITIONING
  - CTJ CONCRETE THERMAL JOINT
  - JAN. JANITORIAL ROOM

- NOTES:**
1. THE ROOM LAYOUT SHOWN IS PRELIMINARY. FINAL LAYOUT AND EGRESS REQUIREMENTS ARE TO BE DEVELOPED DURING FINAL DESIGN IN ACCORDANCE WITH NBC REQUIREMENTS.
  2. EMBEDDED PIPES NOT SHOWN ON THE DRAWING FOR CLARITY.
  3. FLOOR SLOPES NOT SHOWN FOR CLARITY.
  4. FLOOR FINISHES FOR TOPPING SHALL BE U3-TROWELLED TYPE FINISHING.
  5. WATERSTOPS NOT SHOWN FOR CLARITY. IN GENERAL TWO LINES OF PVC-RIBBED WATERSTOPS ARE REQUIRED FOR ALL CONSTRUCTION AND CONTRACTION JOINTS.

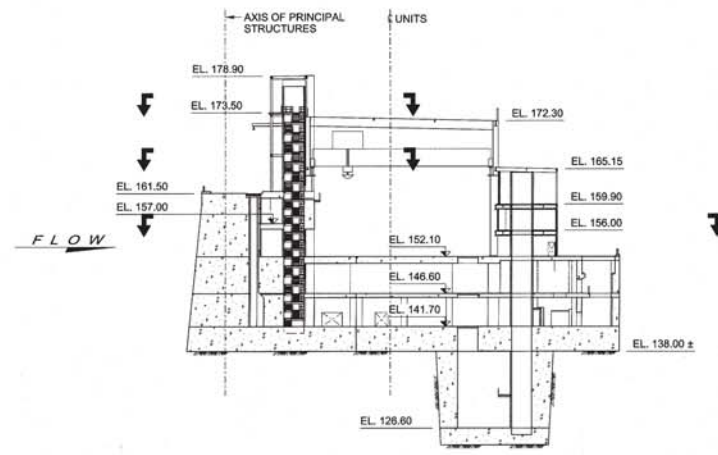
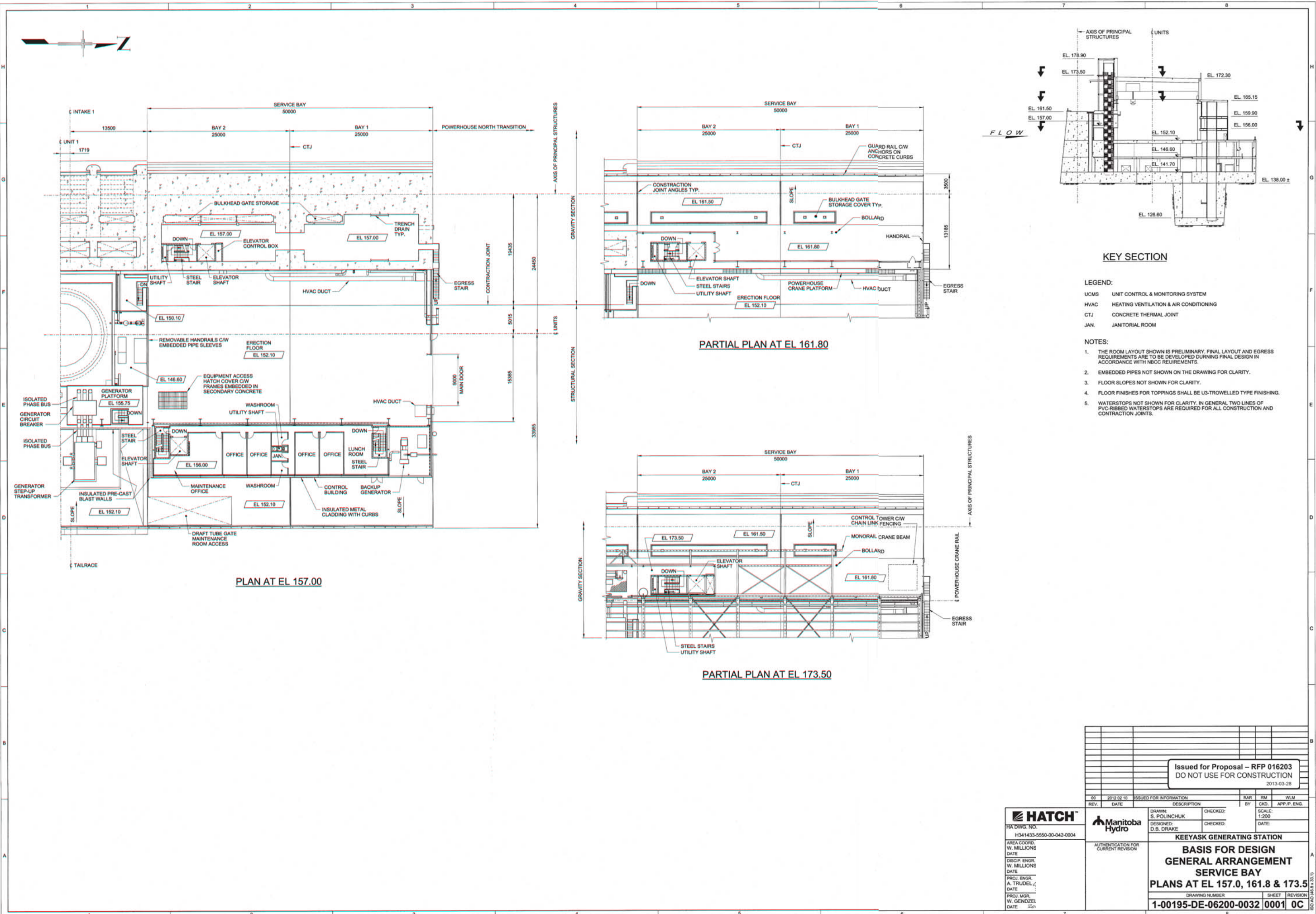


**PLAN AT EL 146.60**



**PLAN AT EL 152.10**

<b>Issued for Proposal – RFP 016203</b> DO NOT USE FOR CONSTRUCTION 2013-03-28			
00	2012 02 10	ISSUED FOR INFORMATION	RAR RM WLM
REV.	DATE	DESCRIPTION	BY CKD APP.P. ENG.
<b>KEYEYASK GENERATING STATION</b>			
<b>BASIS FOR DESIGN</b> <b>GENERAL ARRANGEMENT</b> <b>SERVICE BAY</b> <b>PLANS AT EL 146.6 &amp; 152.1</b>			
DRAWING NUMBER		SHEET REVISION	
1-00195-DE-06200-0031		0001 OC	



**KEY SECTION**

**LEGEND:**

- UCMS UNIT CONTROL & MONITORING SYSTEM
- HVAC HEATING VENTILATION & AIR CONDITIONING
- CTJ CONCRETE THERMAL JOINT
- JAN. JANITORIAL ROOM

**NOTES:**

1. THE ROOM LAYOUT SHOWN IS PRELIMINARY. FINAL LAYOUT AND EGRESS REQUIREMENTS ARE TO BE DEVELOPED DURING FINAL DESIGN IN ACCORDANCE WITH NBCC REQUIREMENTS.
2. EMBEDDED PIPES NOT SHOWN ON THE DRAWING FOR CLARITY.
3. FLOOR SLOPES NOT SHOWN FOR CLARITY.
4. FLOOR FINISHES FOR TOPPING SHALL BE U3-TROWELLED TYPE FINISHING.
5. WATERSTOPS NOT SHOWN FOR CLARITY. IN GENERAL TWO LINES OF PVC-RIBBED WATERSTOPS ARE REQUIRED FOR ALL CONSTRUCTION AND CONTRACTION JOINTS.

**PLAN AT EL 157.00**

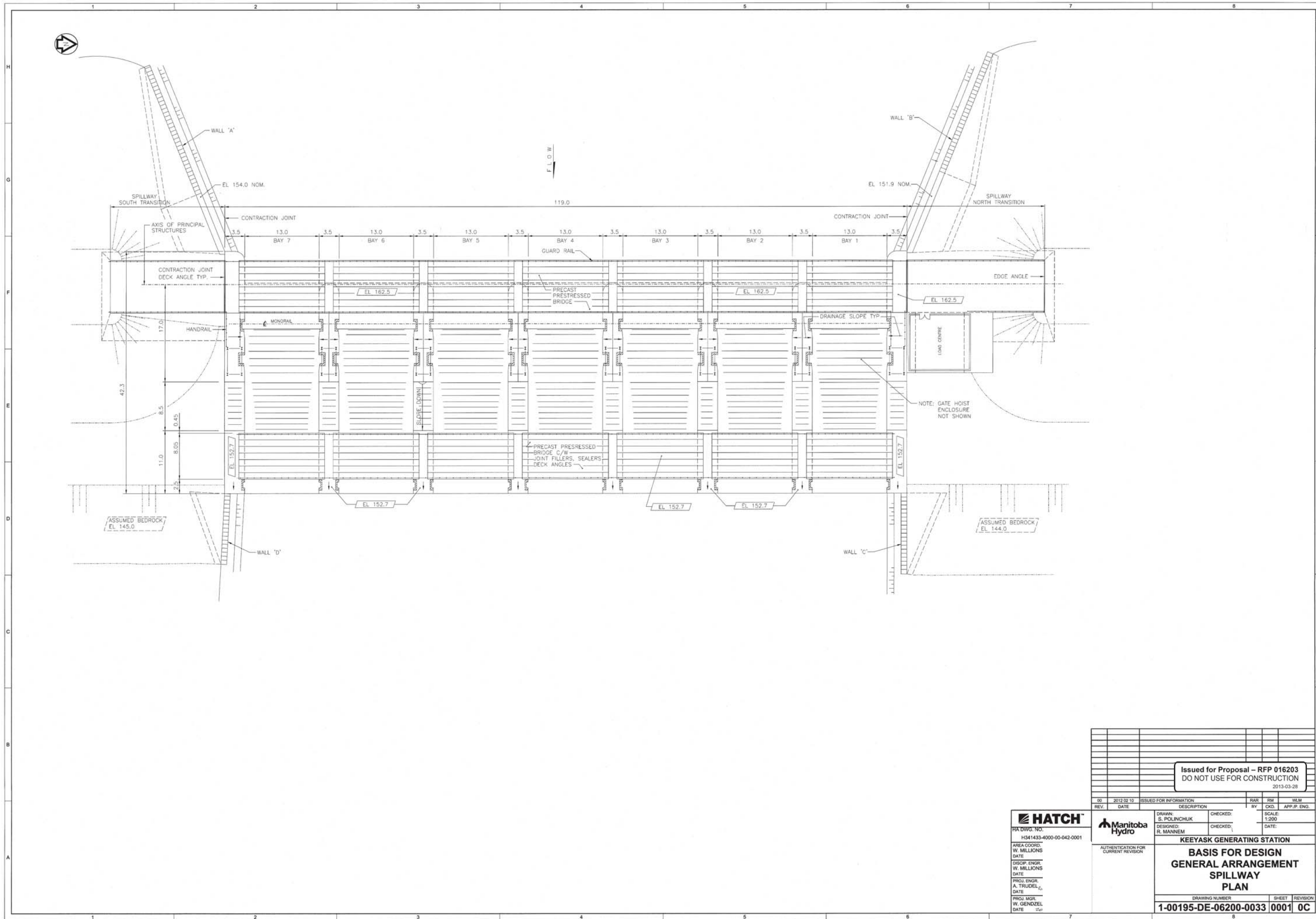
**PARTIAL PLAN AT EL 161.80**

**PARTIAL PLAN AT EL 173.50**

<b>Issued for Proposal – RFP 016203</b> DO NOT USE FOR CONSTRUCTION 2013-03-28			
00	2012 02 10	ISSUED FOR INFORMATION	BAR RM WLM
REV.	DATE	DESCRIPTION	BY CKD. APP./P. ENG.
DRAWN: S. POLINCHUK		CHECKED:	SCALE: 1:200
DESIGNED: D.B. DRAKE		CHECKED:	DATE:
<b>KEYASK GENERATING STATION</b>			
<b>BASIS FOR DESIGN</b>			
<b>GENERAL ARRANGEMENT</b>			
<b>SERVICE BAY</b>			
<b>PLANS AT EL 157.0, 161.8 &amp; 173.5</b>			
DRAWING NUMBER		SHEET	REVISION
<b>1-00195-DE-06200-0032</b>		<b>0001</b>	<b>OC</b>

**HATCH**  
 HATCH NO. H341433-5550-00-042-0004  
 AREA COORD. W. MILLIONS  
 DATE  
 DISCIP. ENGR. W. MILLIONS  
 DATE  
 PROJ. ENGR. A. TRUDELL  
 DATE  
 PROJ. MGR. W. GENDZEL  
 DATE

**Manitoba Hydro**  
 AUTHENTICATION FOR CURRENT REVISION



Issued for Proposal – RFP 016203  
DO NOT USE FOR CONSTRUCTION  
2013-03-28

REV.	DATE	DESCRIPTION	BY	CHKD.	APP.P. ENG.
00	2012 02 10	ISSUED FOR INFORMATION	BAR	IRM	WLM

DRAWN: S. POLINCHUK	CHECKED: R. MANNEM	SCALE: 1:200
DESIGNED: R. MANNEM	CHECKED:	DATE:

**KEYYASK GENERATING STATION**

**BASIS FOR DESIGN  
GENERAL ARRANGEMENT  
SPILLWAY  
PLAN**

DRAWING NUMBER	SHEET	REVISION
1-00195-DE-06200-0033	0001	OC

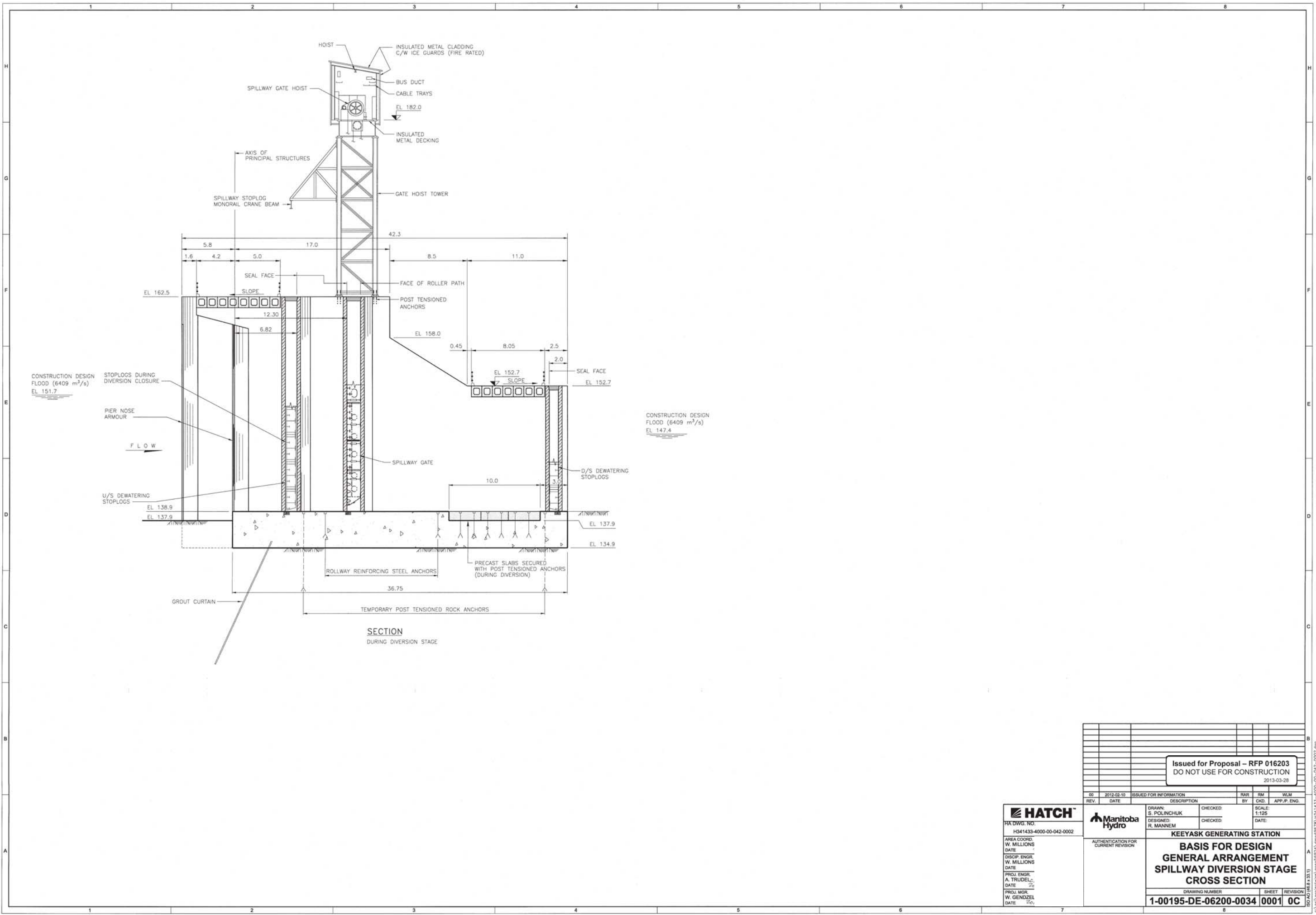
**HATCH**  
HATCH NO.  
H341433-4000-00-042-0001

AREA COORD.  
W. MILLIONS  
DATE

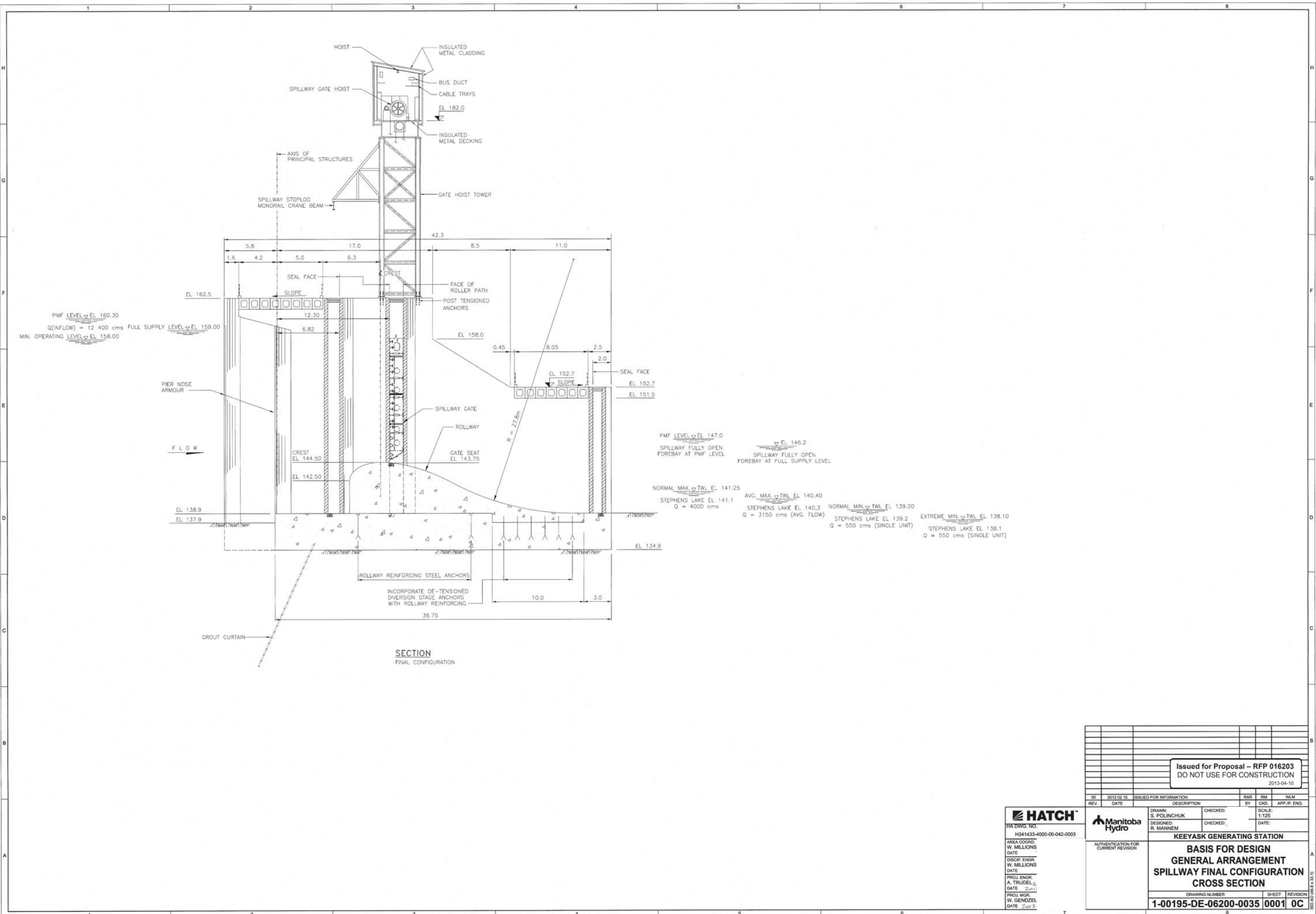
DISCIP. ENGR.  
W. MILLIONS  
DATE

PROJ. ENGR.  
A. TRUDEL  
DATE

PROJ. MGR.  
W. GENDZEL  
DATE



<b>Issued for Proposal – RFP 016203</b> DO NOT USE FOR CONSTRUCTION 2013-03-28					
00	2012-02-10	ISSUED FOR INFORMATION	RAR	SM	WLM
REV.	DATE	DESCRIPTION	BY	CHKD.	APP.P. ENG.
<b>HATCH</b> H341433-4000-00-042-0002		DRAWN: S. POLINCHUK DESIGNED: R. MANNEM	CHECKED: CHECKED:	SCALE: 1:125 DATE:	
AUTHENTICATION FOR CURRENT REVISION		<b>KEYYASK GENERATING STATION</b> <b>BASIS FOR DESIGN</b> <b>GENERAL ARRANGEMENT</b> <b>SPILLWAY DIVERSION STAGE</b> <b>CROSS SECTION</b>			
DRAWING NUMBER <b>1-00195-DE-06200-0034</b>		SHEET <b>0001</b>		REVISION <b>0C</b>	



Issued for Proposal - RFP 016203  
DO NOT USE FOR CONSTRUCTION  
2013-04-10

**HATCH**  
Hatch DWSG. NO.  
H341433-4000-00-042-0003  
AREA COORD.  
W. MILLIONS  
DATE  
DISCIP. ENGR.  
A. TRUDEL  
DATE 2011  
PROJ. MGR.  
W. GENZEL  
DATE 2013

**Manitoba Hydro**  
DRAWN:  
S. POLINCHUK  
DESIGNED:  
R. MANNEM  
CHECKED:  
DATE

REV.	DATE	DESCRIPTION	BY	CHKD.	APP. P. ENG.	SCALE
00	2012/02/10	ISSUED FOR INFORMATION				1:125

**KEYASK GENERATING STATION**

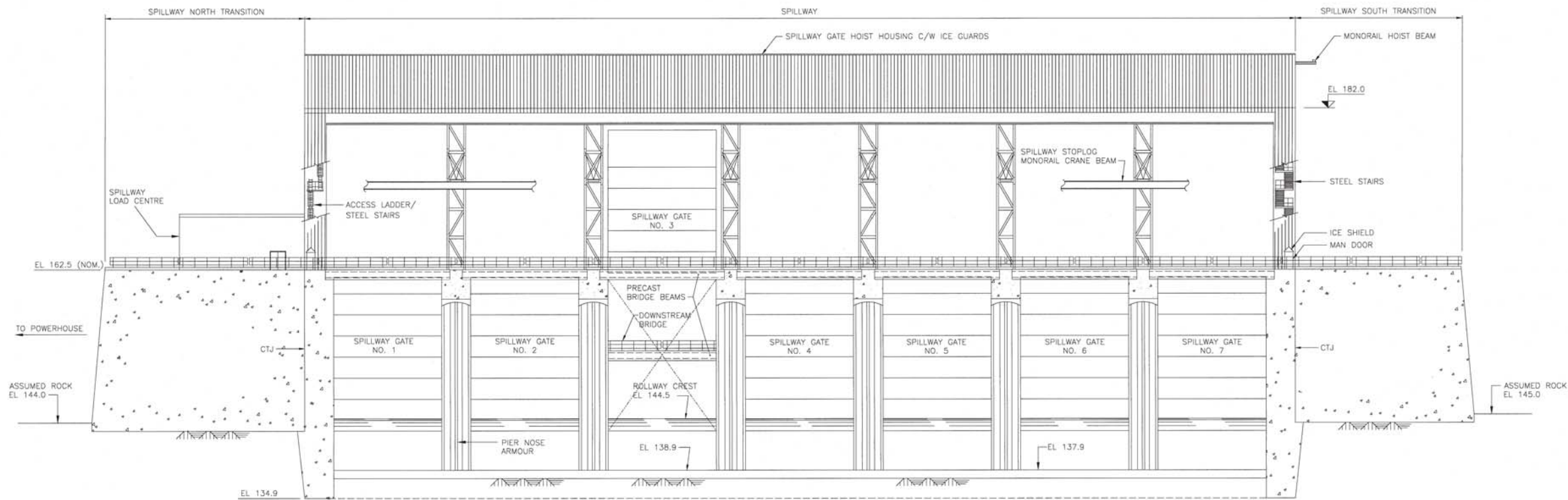
**BASIS FOR DESIGN**

**GENERAL ARRANGEMENT**

**SPILLWAY FINAL CONFIGURATION**

**CROSS SECTION**

DRAWING NUMBER	SHEET	REVISION
1-00195-DE-06200-0035	0001	0C



UPSTREAM ELEVATION  
FINAL CONFIGURATION

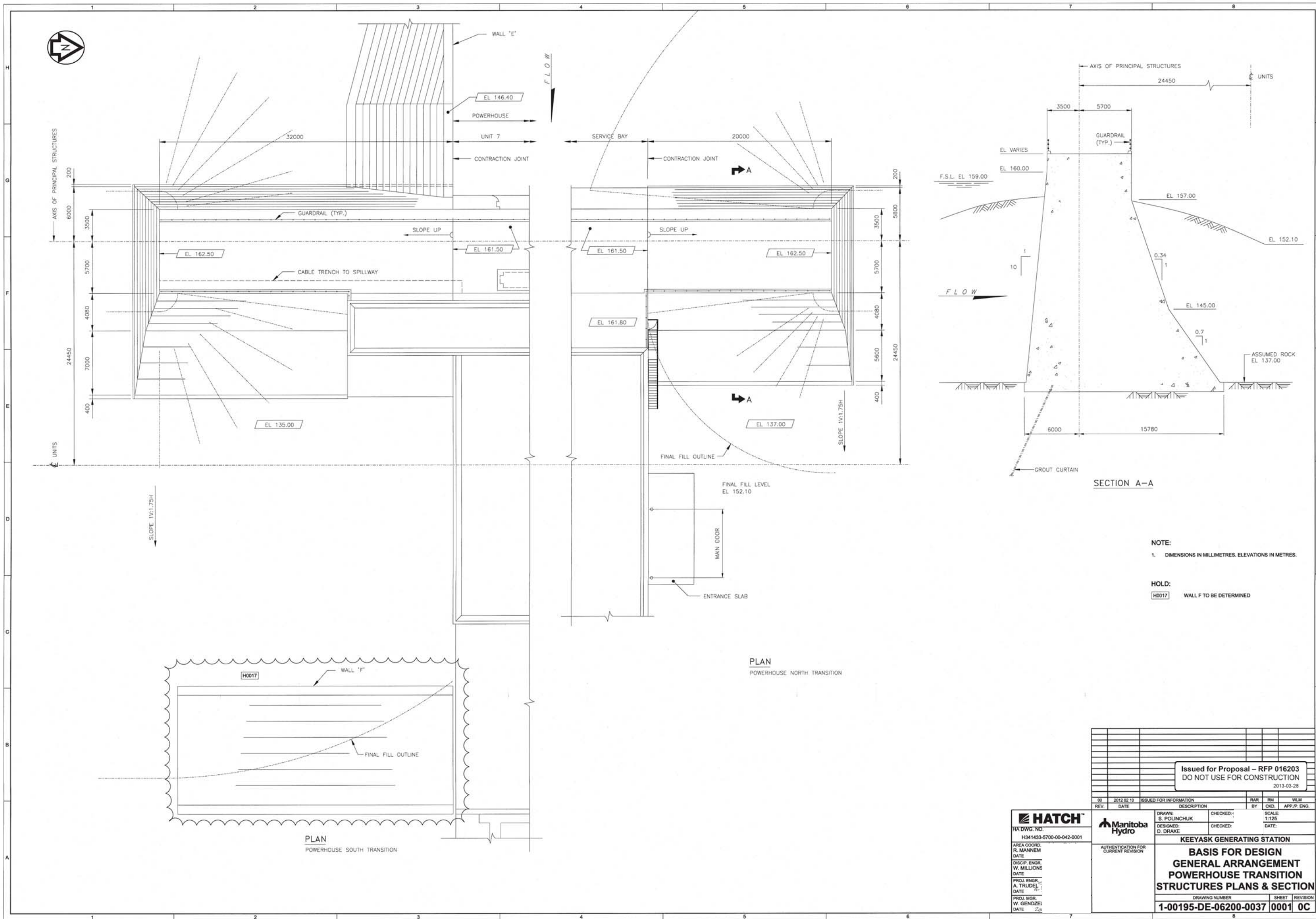
<b>Issued for Proposal - RFP 016203</b> DO NOT USE FOR CONSTRUCTION 2013-03-28					
REV	DATE	ISSUED FOR INFORMATION	BY	CHKD.	APP/P. ENL.
00	2012-02-10	ISSUED FOR INFORMATION	RAR	RM	WLM
DRAWN:		CHECKED:		SCALE:	
S. POLINCHUK		D. DRAKE		1:200	
DESIGNED:		CHECKED:		DATE:	
D. DRAKE		D. DRAKE			
<b>KEYYASK GENERATING STATION</b> <b>BASIS FOR DESIGN</b> <b>GENERAL ARRANGEMENT</b> <b>SPILLWAY</b> <b>ELEVATION</b>					
DRAWING NUMBER		SHEET		REVISION	
1-00195-DE-06200-0036		0001		OC	

**HATCH**  
 HATCH NO.  
 H341433-4000-00-042-0004  
 AREA COORD.  
 W. MILLIONS  
 DATE  
 DISCIPL. ENGR.  
 W. MILLIONS  
 DATE  
 PROJ. ENGR.  
 A. TRUDELL  
 DATE  
 PROJ. MGR.  
 W. GENDZELI  
 DATE

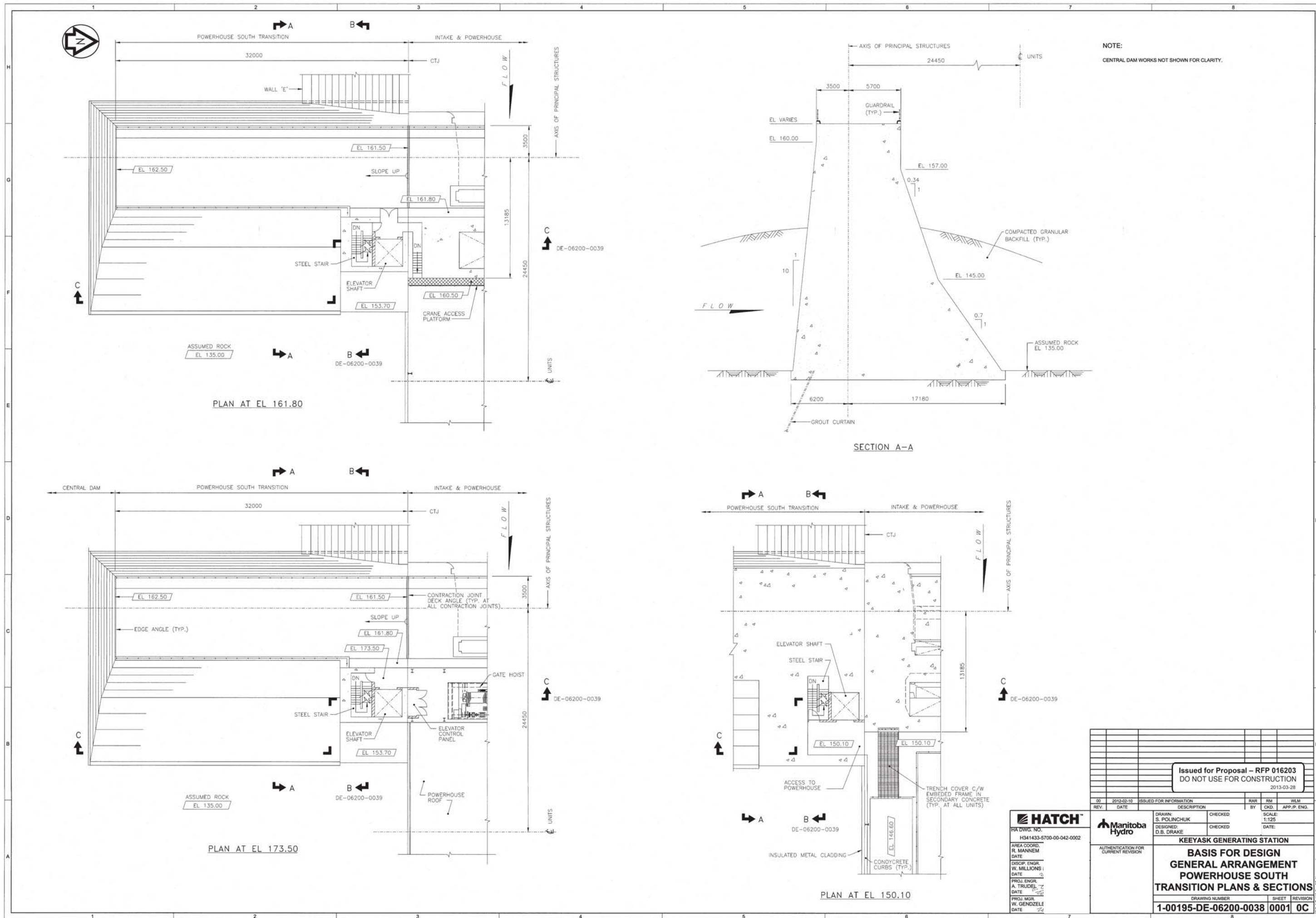


MANITOBA  
 HYDRO

AUTHENTICATION FOR  
 CURRENT REVISION







NOTE:  
CENTRAL DAM WORKS NOT SHOWN FOR CLARITY.

PLAN AT EL 161.80

SECTION A-A

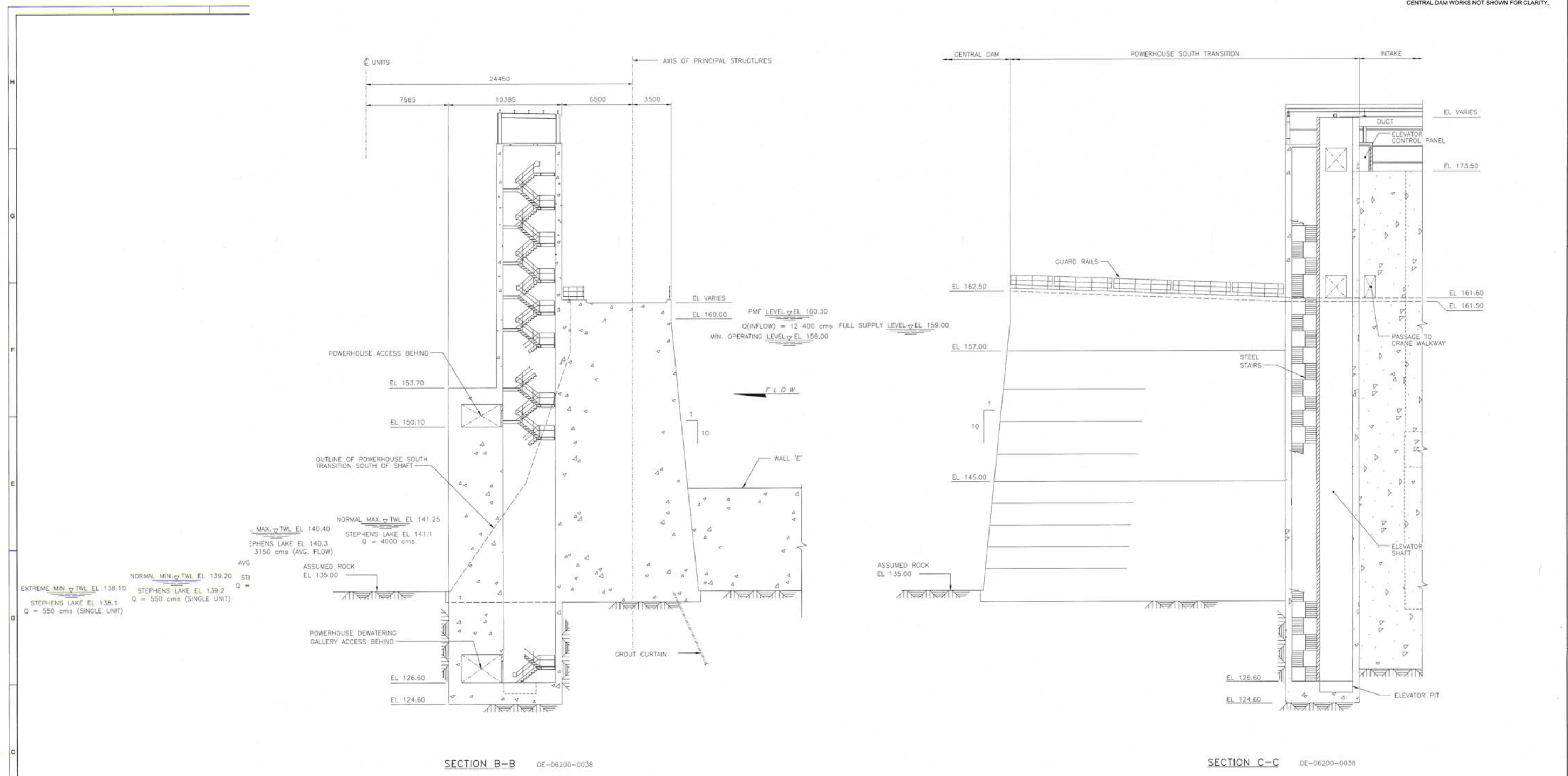
PLAN AT EL 173.50

PLAN AT EL 150.10

<b>HATCH</b>	
HA DWG. NO. H341433-5700-00-042-0002	AREA COORD. R. MANNEM
DATE	DATE
DISIP. ENGR. W. MILLIONS	CHECKED S. POLINCHUK
DATE	SCALE: 1:125
PROJ. ENGR. A. TRUDEL	CHECKED D.B. DRAKE
DATE	DATE
PROJ. MGR. W. GENZELLE	
DATE	

<p>Issued for Proposal - RFP 016203 DO NOT USE FOR CONSTRUCTION 2013-03-28</p>																
<table border="1"> <tr> <th>REV.</th> <th>DATE</th> <th>DESCRIPTION</th> <th>BY</th> <th>CHKD.</th> <th>APP.P. ENG.</th> </tr> <tr> <td>00</td> <td>2012-02-10</td> <td>ISSUED FOR INFORMATION</td> <td></td> <td></td> <td></td> </tr> </table>	REV.	DATE	DESCRIPTION	BY	CHKD.	APP.P. ENG.	00	2012-02-10	ISSUED FOR INFORMATION				<table border="1"> <tr> <td>                 DRAWN: S. POLINCHUK DATE  </td> <td>                 CHECKED: S. POLINCHUK DATE  </td> <td>                 SCALE: 1:125 DATE  </td> </tr> </table>	DRAWN: S. POLINCHUK DATE 	CHECKED: S. POLINCHUK DATE 	SCALE: 1:125 DATE 
REV.	DATE	DESCRIPTION	BY	CHKD.	APP.P. ENG.											
00	2012-02-10	ISSUED FOR INFORMATION														
DRAWN: S. POLINCHUK DATE 	CHECKED: S. POLINCHUK DATE 	SCALE: 1:125 DATE 														
AUTHENTICATION FOR CURRENT REVISION																
KEYASK GENERATING STATION <b>BASIS FOR DESIGN</b> <b>GENERAL ARRANGEMENT</b> <b>POWERHOUSE SOUTH</b> <b>TRANSITION PLANS &amp; SECTIONS</b>																
DRAWING NUMBER: 1-00195-DE-06200-0038 SHEET: 0001 REVISION: 0C																

NOTE:  
CENTRAL DAM WORKS NOT SHOWN FOR CLARITY.



SECTION B-B DE-06200-0038

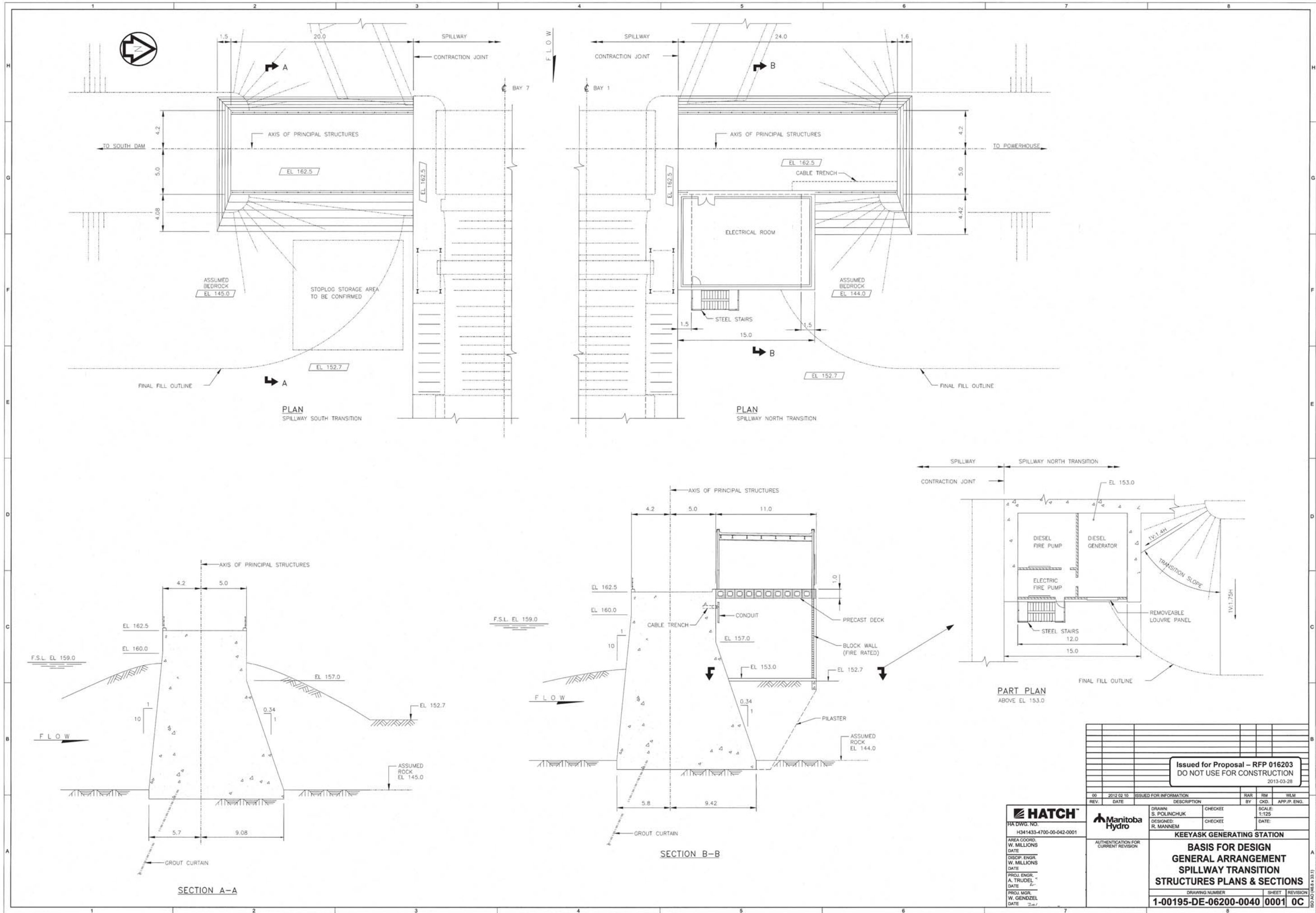
SECTION C-C DE-06200-0038

Issued for Proposal - RFP 016203			
DO NOT USE FOR CONSTRUCTION			
2013-04-10			
REV.	DATE	DESCRIPTION	BY
00	2012-02-10	ISSUED FOR INFORMATION	BAR
			RM
			WLM

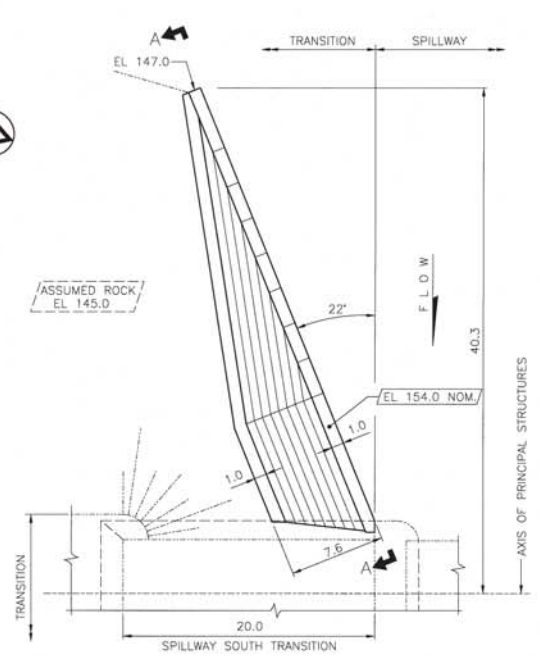
**HATCH**  
Hatch Inc.  
300 King Street West  
Toronto, Ontario M5X 1C4  
Canada  
Tel: 416-593-4700  
Fax: 416-593-4701  
www.hatch.com

**Manitoba Hydro**  
Manitoba Hydro  
1000 University Avenue  
Winnipeg, Manitoba R2S 2V6  
Canada  
Tel: 204-954-2000  
Fax: 204-954-2001  
www.manitobahydro.com

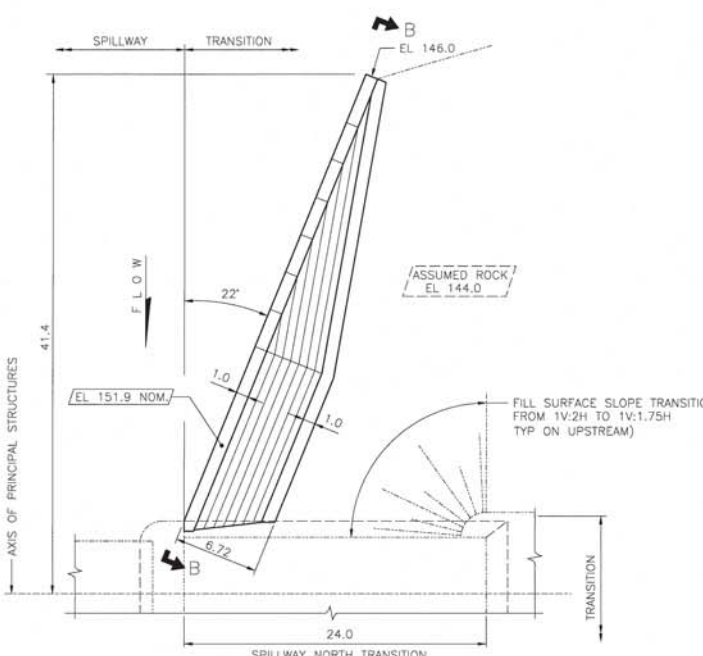
DRAWN: S. POLINCHUK	CHECKED: D.B. DRAKE	SCALE: 1:125	DATE: 2013-04-10
KEYEASK GENERATING STATION			
BASIS FOR DESIGN GENERAL ARRANGEMENT POWERHOUSE SOUTH TRANSITION SECTIONS			
DRAWING NUMBER	SHEET	REVISION	
1-00195-DE-06200-0039	0001	OC	



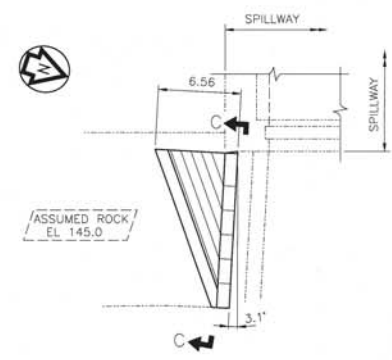
<b>Issued for Proposal - RFP 016203</b> DO NOT USE FOR CONSTRUCTION 2013-03-28					
00	2012 02 10	ISSUED FOR INFORMATION	BAR	RM	WLM
REV.	DATE	DESCRIPTION	BY	CHKD.	APP.P. ENG.
<b>HATCH</b> RA DWG. NO. H341433-4700-00-042-0001		<b>Manitoba Hydro</b> AUTHENTICATION FOR CURRENT REVISION		DRAWN: S. POLINCHUK DESIGNED: R. MANNEM CHECKER: [ ] SCALE: 1:125 DATE: [ ]	
<b>KEYASK GENERATING STATION</b> <b>BASIS FOR DESIGN</b> <b>GENERAL ARRANGEMENT</b> <b>SPILLWAY NORTH TRANSITION</b> <b>STRUCTURES PLANS &amp; SECTIONS</b>					
AREA COORD. W. MILLIONS DATE DISCIP. ENGR. W. MILLIONS DATE PROJ. ENGR. A. TRUDEL DATE PROJ. MGR. W. GENZEL DATE			DRAWING NUMBER: 1-00195-DE-06200-0040 SHEET: 0001 REVISION: OC		



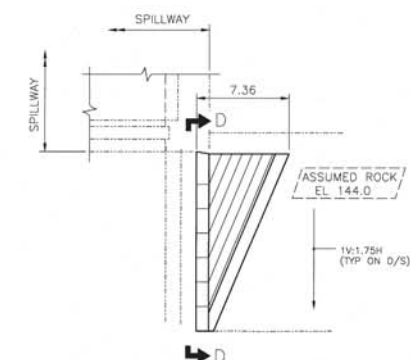
PLAN  
WALL 'A'  
SCALE 1:200



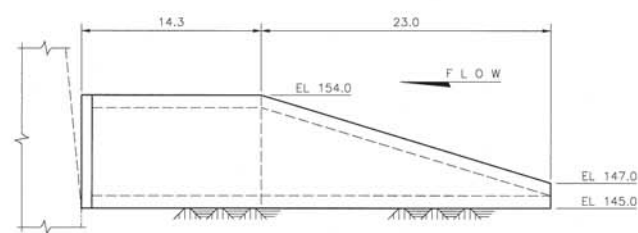
PLAN  
WALL 'B'  
SCALE 1:200



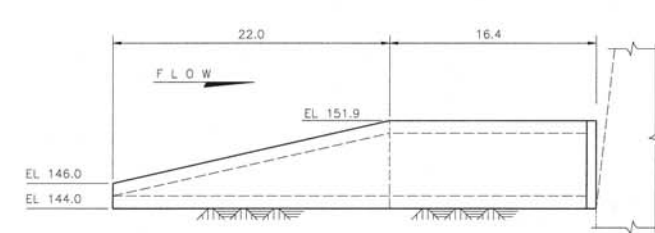
PLAN  
WALL 'C'  
SCALE 1:200



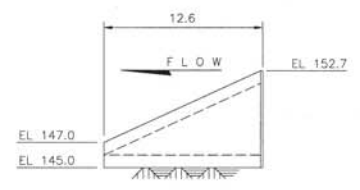
PLAN  
WALL 'D'  
SCALE 1:200



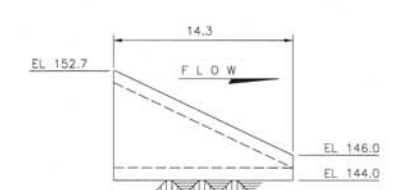
ELEVATION A-A  
SCALE 1:200



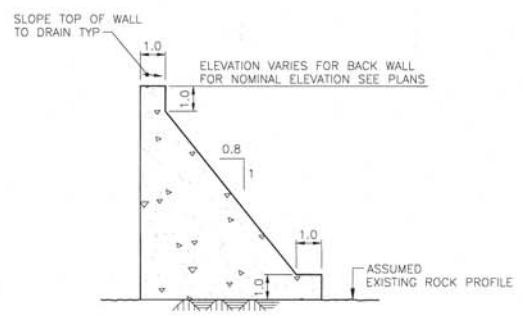
ELEVATION B-B  
SCALE 1:200



ELEVATION C-C  
SCALE 1:200



ELEVATION D-D  
SCALE 1:200

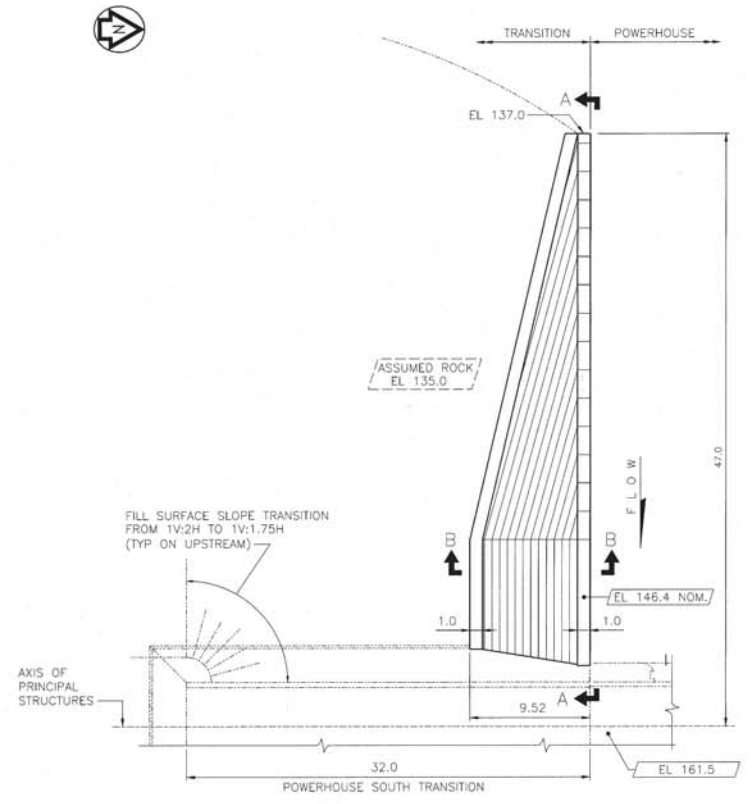


TYPICAL SECTION  
SCALE 1:100

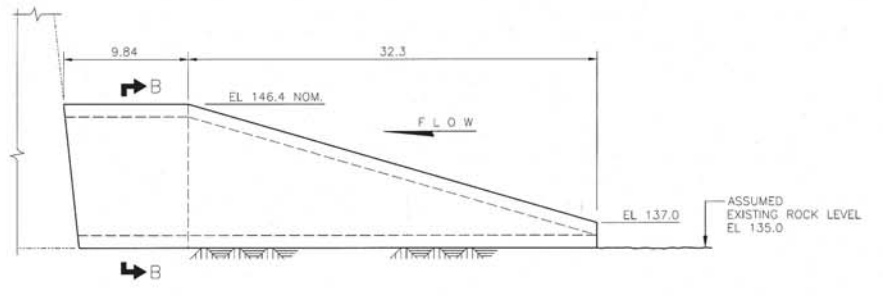
<b>Issued for Proposal - RFP 016203</b> DO NOT USE FOR CONSTRUCTION 2013-03-28					
00	2012 02 10	ISSUED FOR INFORMATION	RAR	RM	WLM
REV.	DATE	DESCRIPTION	BY	CHKD.	APP. P. ENG.
		SCALE			SCALE
					AS NOTED
<b>KEYYASK GENERATING STATION</b>					
<b>BASIS FOR DESIGN</b>					
<b>GENERAL ARRANGEMENT</b>					
<b>SPILLWAY WALLS 'A', 'B', 'C' &amp; 'D'</b>					
<b>PLANS, ELEVATIONS &amp; SECTIONS</b>					
DRAWING NUMBER			SHEET		
1-00195-DE-06200-0041			0001		
DATE			DATE		
2013-03-28			2013-03-28		

<b>HATCH</b> HA DWG. NO. H341433-4700-00-042-0002	
AREA COORD.	W. MILLIONS
DATE	
DISCIP. ENGR.	W. MILLIONS
DATE	
PROJ. ENGR.	A. TRUDEL
DATE	
PROJ. MGR.	W. GENDZEL
DATE	

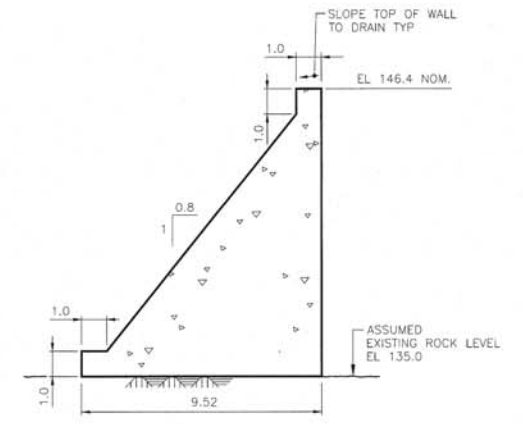
<b>Manitoba Hydro</b>	
AUTHENTICATION FOR CURRENT REVISION	



PLAN  
WALL 'E'  
SCALE 1:200



ELEVATION A-A  
SCALE 1:200



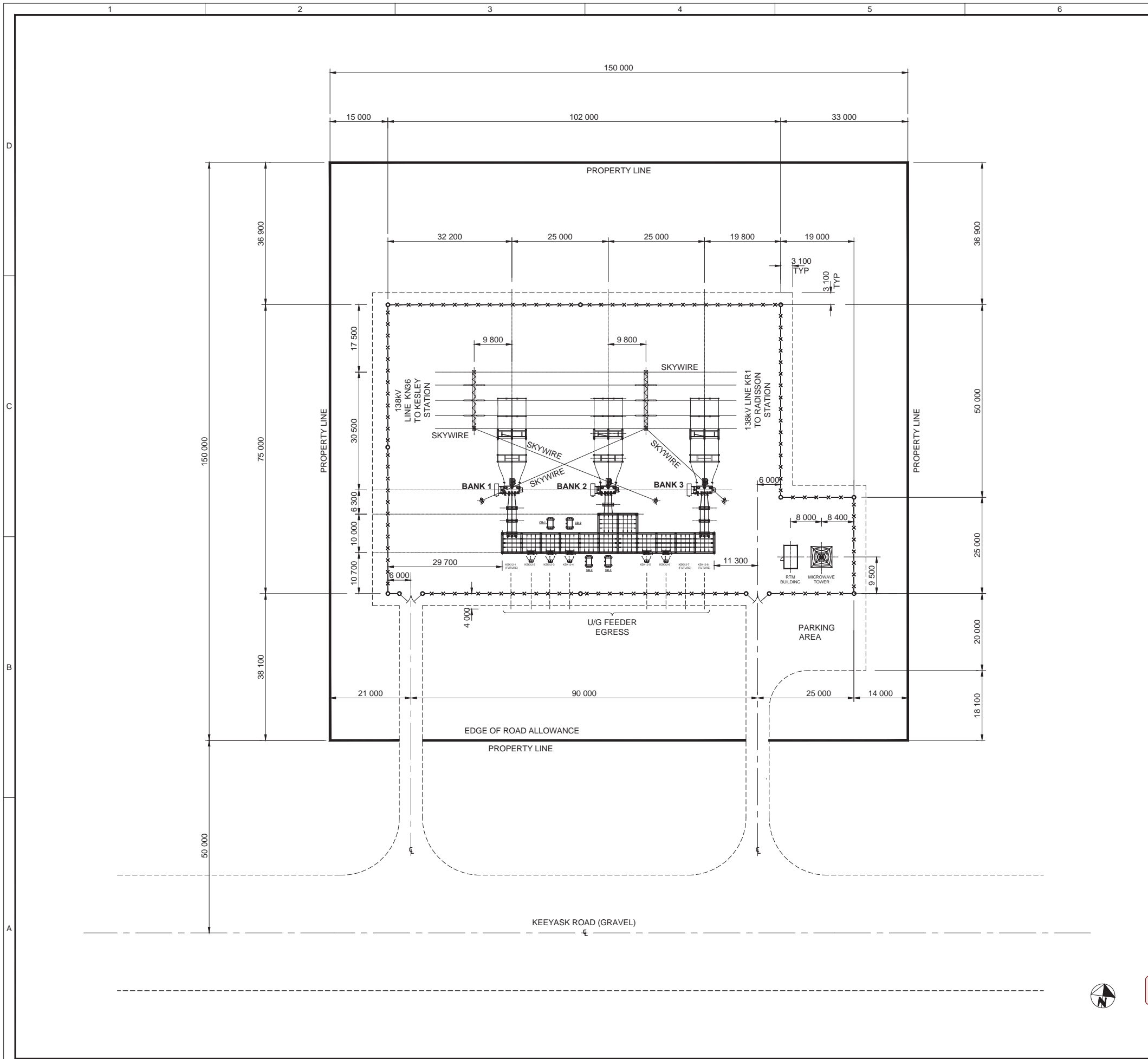
SECTION B-B  
SCALE 1:100

<b>Issued for Proposal - RFP 016203</b> DO NOT USE FOR CONSTRUCTION 2013-03-28					
00	2013-02-10	ISSUED FOR INFORMATION	RAR	RM	WLM
REV.	DATE	DESCRIPTION	BY	CHKD.	APP.P. ENG.
DRAWN: S. POLINCHUK		CHECK:	SCALE: NTS		
DESIGNED: D. DRAKE		DATE:	DATE:		
<b>KEYYASK GENERATING STATION</b> <b>BASIS FOR DESIGN</b> <b>GENERAL ARRANGEMENT</b> <b>POWERHOUSE WALL 'E'</b> <b>PLAN, ELEVATION &amp; SECTION</b>					
DRAWING NUMBER		SHEET	REVISION		
1-00195-DE-06200-0042		0001	0C		

**HATCH**  
 HATCH DWG. NO.  
 H341433-5700-00-042-0004  
 AREA COORD.  
 W. MILLIONS  
 DATE  
 DISCIPL. ENGR.  
 W. MILLIONS  
 DATE  
 PROJ. ENGR.  
 A. TRUDEL  
 DATE  
 PROJ. MGR.  
 W. GENOZEL  
 DATE



AUTHENTICATION FOR CURRENT REVISION



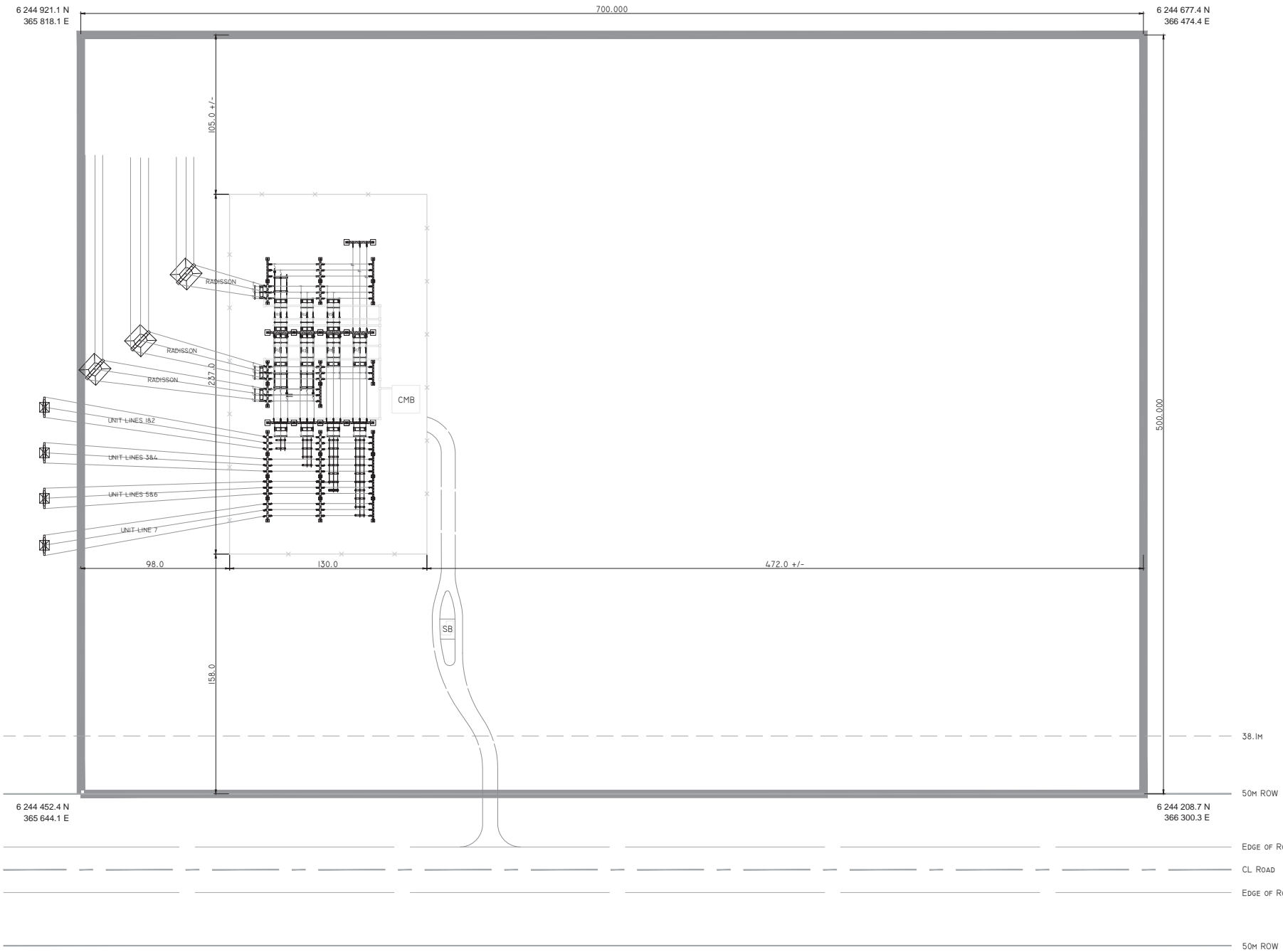
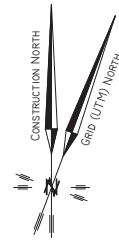
REFERENCE DRAWINGS		
CODE	DRAWING NUMBER	DRAWING TITLE
	1-02820-FD-50000-0001 0001	138 - 12kV SWITCHYARD SINGLE LINE DIAGRAM
	1-02820-DD-50200-0001 0001	138 - 12kV STATION LAYOUT
	1-02820-DD-51500-0001 0001	138 - 12kV SWITCHYARD 138kV STRUCTURE & EQUIPMENT PLAN VIEW
	1-02820-DE-52300-0001 0001	138 - 12kV SWITCHYARD 12kV STRUCTURE & EQUIPMENT PLAN VIEW
	1-02820-DE-12000-0001 0001	138 - 12kV SWITCHYARD SITE IMPROVEMENT PLAN

**GENERAL NOTES**

1. ALL DIMENSIONS ARE IN MILLIMETERS.

00	NETWORK #246320	RD			
REV.	DATE	DESCRIPTION	BY	CKD.	APP./P. ENG.

	DRAWN: RD DESIGNED:	CHECKED: DATE: 2013-03-21	SCALE: 1:500
	<b>KEYYASK CONSTRUCTION POWER STATION</b>		
AUTHENTICATION FOR CURRENT REVISION		<b>138 - 12kV STATION SITE LAYOUT</b>	
<b>NOT APPROVED</b>			
DRAWING NUMBER <b>1-02820-DD-10100-0001</b>		SHEET <b>0001</b>	REVISION <b>00</b>



### NOTES

1. TRANSMISSION AND UNIT LINE TOWERS ARE SHOWN FOR INFORMATION ONLY. SIZES AND LOCATIONS ARE TO BE DETERMINED.
2. THIS DRAWING IS CONCEPT ONLY AND IS NOT TO BE USED FOR CONSTRUCTION PURPOSES.
3. UTM COORDINATES SHOWN ARE FOR INFORMATION ONLY. ACTUAL LOCATION IS TO BE DETERMINED BY GROUND SURVEY.
4. UTM COORDINATES SHOWN ARE NAD83, ZONE15 CSRS.

### LEGEND

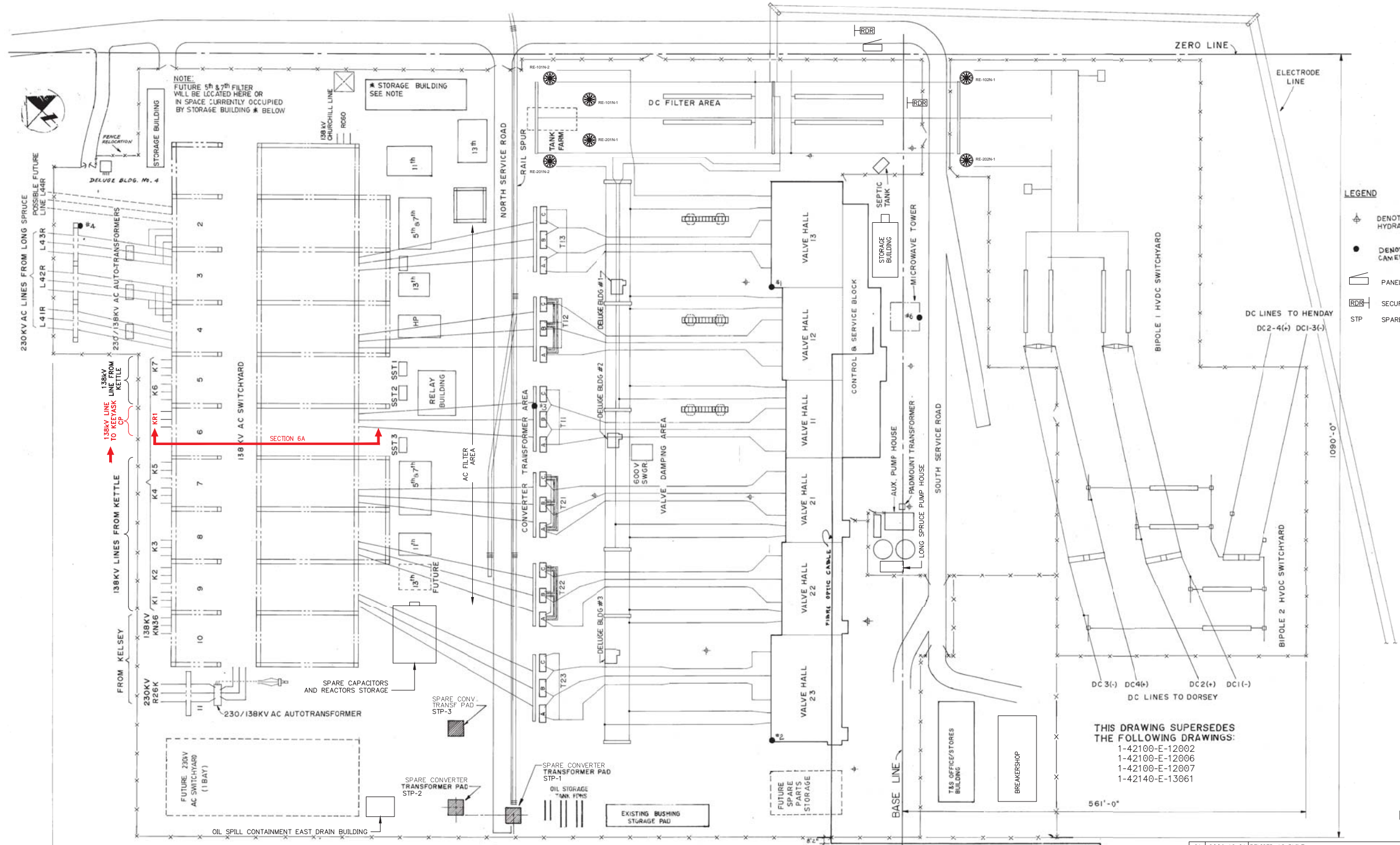
- Control Building
- Tower - Transmission Line, Unit Line
- Road
- Station Fence
- Cable Trench

00	2013-05-24	NETWORK #246321	SH	GK	
----	------------	-----------------	----	----	--

REV.	DATE	DESCRIPTION	BY	CKD.	APP.

	DRAWN: SH	CHECKED: GK	SCALE: 1 : 1750
	DESIGNED: GK	DATE: 2013-05-24	
<b>KEYASK SWITCHING STATION</b>			
<b>CONCEPT LAYOUT FOR 138kV STATION</b>			
DRAWING NUMBER		SHEET	REVISION
<b>1-02811-DD-10100-0001</b>		<b>0001</b>	<b>00</b>

1-42100-E-42001



- LEGEND**
- DENOTES FIRE HYDRANT.
  - DENOTES SECURITY CAMERA
  - PANEL (SURFACE MTD.) CONTROL PANEL
  - SECURITY CARD READER
  - SPARE TRANSFORMER PAD

**THIS DRAWING SUPERSEDES THE FOLLOWING DRAWINGS:**  
 1-42100-E-12002  
 1-42100-E-12006  
 1-42100-E-12007  
 1-42140-E-13061

HYBRID DRAWING

CL MEASUREMENT TOWER TO CABLE TRAY 9'-8" STRUCTURE IS 5'-1"x5'-1"

NO.	DATE	REVISIONS	BY	CHKD.	APP.
21	2009-12-01	REVISED AS BUILT	DAS	RA	RA
26	2008-08-26	REVISED AS PER SITE INFO.	DAS	PK	PK
23		NW 246876 - ADDED LINE KR1 TO KEYASK CP	JD		
22	2012-05-24	ADDED DC SMOOTHING REACTORS BY TCLP, P.IONITA, #23958	ΔΔ	KV	PI P.Eng.

NO.	DATE	REVISIONS	BY	CHKD.	APP.
30	1-42184-B-20001 SHT.01	POLE 2 PANEL SCHEDULE			
29	1-42184-B-11001 SHT.01	CANCELLED PNL. SCHEDULE POLE 1 AND MASTER BIPOLE PNL. SCHED.			
28	1-42182-E-10007	SUPERSEDED BY 1-42182-E-30106 SHTS. 01 - 03			
27	1-42190-E-20011	OVERHEAD SHIELD WIRE LAYOUT PLAN AND DETAILS			
26	1-42178-D-42005	DC SWYD OVERHEAD SHIELD WIRE LYT PLAN & GRND DTLS			
25	1-42150-E-30049 SHTS.01 - 03	FILTER BANK & CONV. TRANSFORMER, AREA PLAN @ EL. 432'-0"			
24	1-42150-E-30048 SHTS.01 & 02	FILTER BANK & CONV. TRANSFORMER, AREA PLAN @ EL. 451'-0"			
23	1-42150-E-30047 SHTS.01 - 03	FILTER BANK & CONV. TRANSFORMER, AREA PLAN @ EL. 469'-0"			
22	1-42150-E-30043 SHTS.01 - 03	138KV AC SWITCHYARD BAYS 1-11 PLAN AT ELEVATION 432'-0"			
21	1-42150-E-30042 SHTS.01 - 03	138KV AC SWITCHYARD BAYS 1-11 PLAN AT ELEVATION 451'-0"			
20	1-42150-E-30041 SHTS.01 - 03	138KV AC SWITCHYARD BAYS 1-11 PLAN AT ELEVATION 469'-0"			
19	1-42140-E-30022 SHT.1A	CNVTR BLDG VALVE GROUP VG22 AREA B2 ELECTRICAL EQUIP. LAYOUT			
18	1-42140-E-30021 SHT.1A	CNVTR BLDG VALVE GROUP VG23 AREA B1 ELECTRICAL EQUIP. LAYOUT			
17	1-42140-E-20003	CNVTR BLDG VALVE GROUP VG21 AREA B3 ELECTRICAL EQUIP. LAYOUT			
16	3-42140-E-101-3015	PLAN OF 150KV, 650KV BIL VG.11 POLE 1			
15	3-42140-E-101-3010	PLAN OF 300KV, 1050KV BIL VG.12 POLE 1			
14	3-42140-E-101-3004	PLAN OF 450KV, 1550KV BIL VG.13 POLE 1			
13	1-42190-D-42001	BIPOLE 2 DC LINE SWITCHYARD EQUIPMENT LAYOUT PLAN			
12	1-42140-E-13028	HVDC SWYD SMTHNG RCTR AND FLTR BANK AREA GENERAL LAYOUT PLAN & SECTION X			
11	1-42140-E-13005	BIPOLE 1 DC LINE SWITCHYARD EQUIPMENT LAYOUT PLAN			
10	1-42190-E-20001	VALVE GROUPS 21 & 23 VALVE DAMPING & CONV. TRANS. AREAS GENERAL PLAN LAYOUT			
9	1-42140-E-13002	138KV SWYD DAMPING AND CONVERTER TRANS. AREA LAYOUT			
8	1-42115-D-10004	DRAWING SUPERSEDED BY 1-42110-E-10003			
7	1-42114-E-20004	SECURITY FENCE ARRANGEMENT & DETAILS			
6	1-42114-E-10003	SECURITY FENCE ARRANGEMENT & DETAILS			
5	1-42110-E-42003 SHTS.01 & 02	CONSOLIDATED SITE IMPRVMENT & WATER SERV'S SECT & DETAILS			
4	1-42110-E-42002 SHT.01	138KV AC SWITCHYARD SITE DRAINAGE & WATER SERVICES PLAN			
3	1-42040-E-44001 SHTS.01 & 02	230KV SWITCHYARD POLE 3/4 DC POWER CIRCUIT SCHEM. DIAG.			
2	1-42140-D-20006/20007	VALVE GROUPS VG11 TO VG23 DC POWER CIRCUIT SCHEM. DIAG.			
1	1-42150-E-30040 SHTS.01 & 02	138KV AC SWYD BAYS 1-5 ELECTRICAL EQUIP. SINGLE LINE DIAG.			

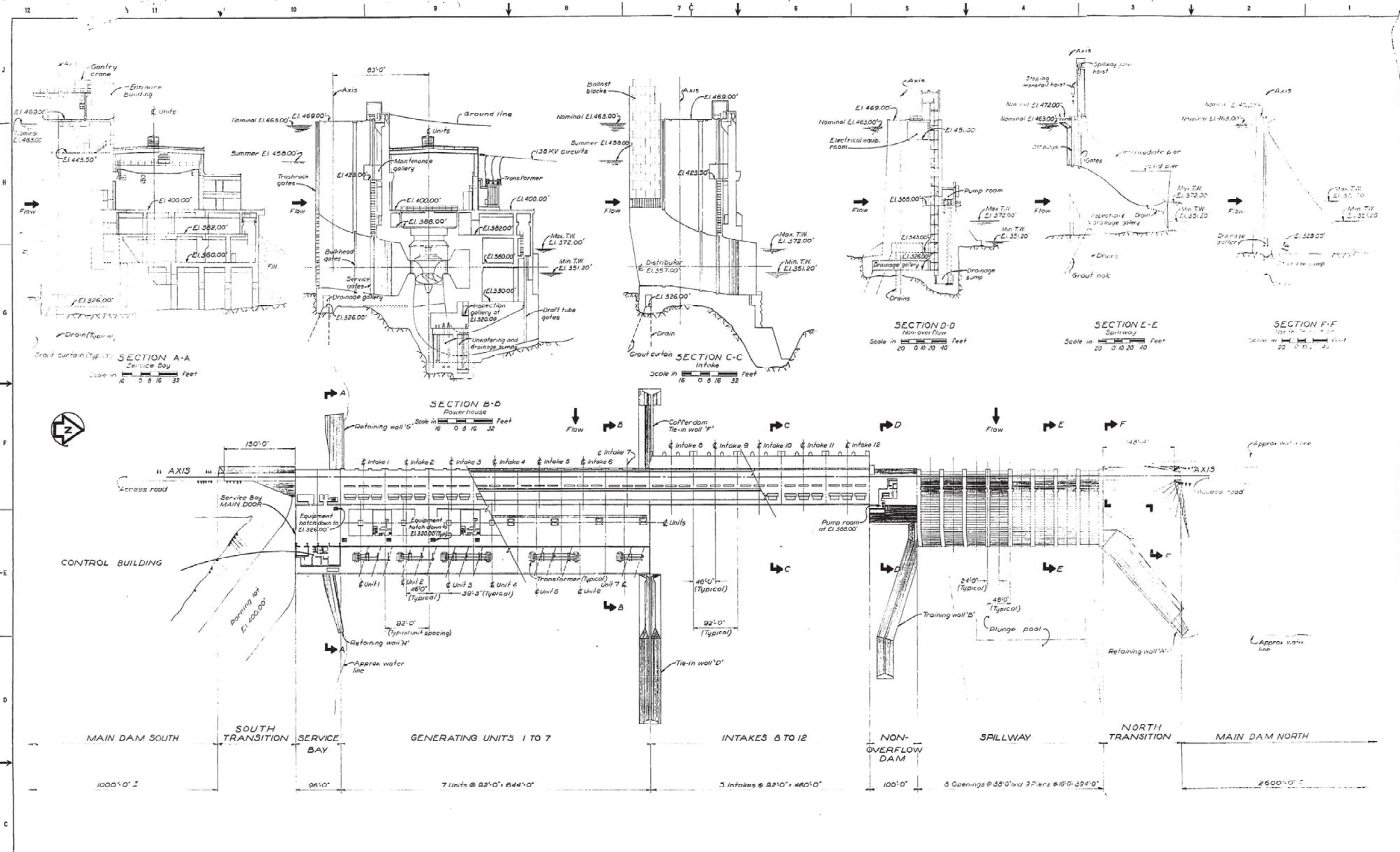
TESHMENT CONSULTANTS LP  
 MANITOBA HYDRO  
 RADISSON STATION

**OVERALL STATION LAYOUT**

1-42100-E-42001

SHT. REV. 0001 23





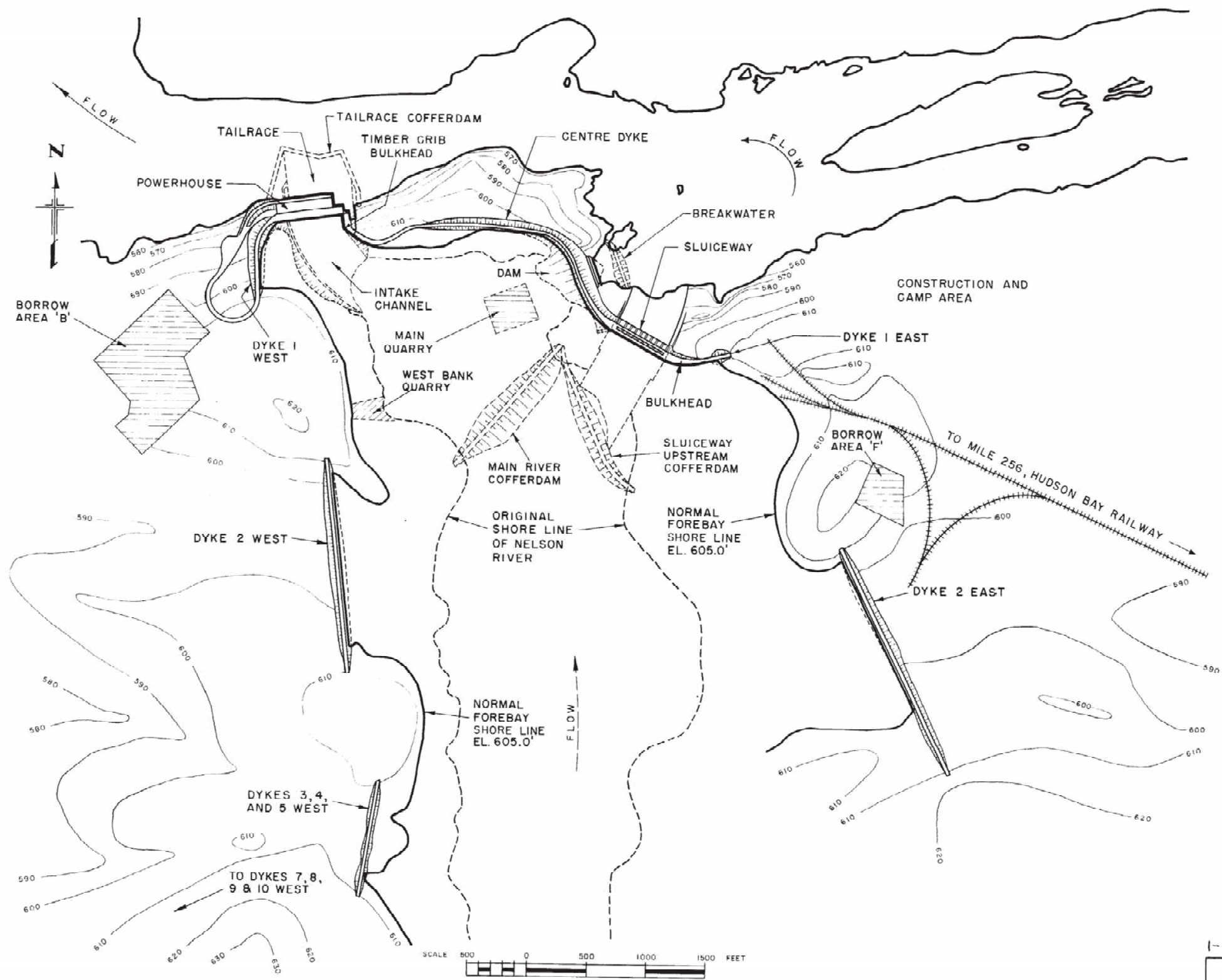
PLAN OF PRINCIPAL STRUCTURES  
Scale in Feet  
64 32 16 0 32 64 128

00113-DE-22000-0001-0001

CRIPPEN ACRES LTD. - WINNIPEG, MANITOBA		MANITOBA HYDRO	
DESIGNED		KETTLE GENERATING STATION	
DRAWN		PRINCIPAL STRUCTURES	
CHECKED		GENERAL ARRANGEMENT	
SUBMITTED		PLAN AND TRANSVERSE SECTIONS	
RECOMM.		SCALE	MANITOBA HYDRO 6113-C
APPROVED		As Noted	DWG NO. 1183
DATE: March 14, 1969		CRIPPEN ACRES LTD. 101-C	REVISION

J.H. SALDAT  
REGISTERED ENGINEER

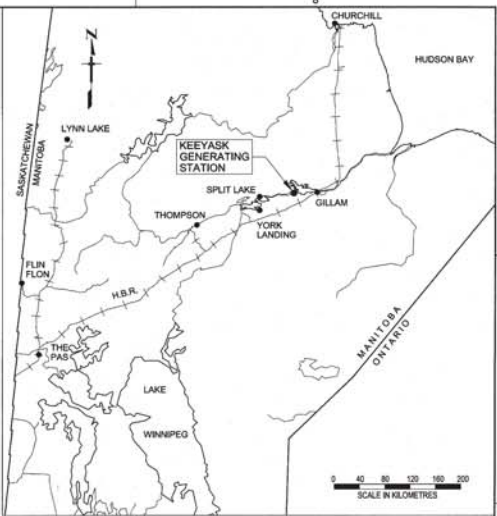
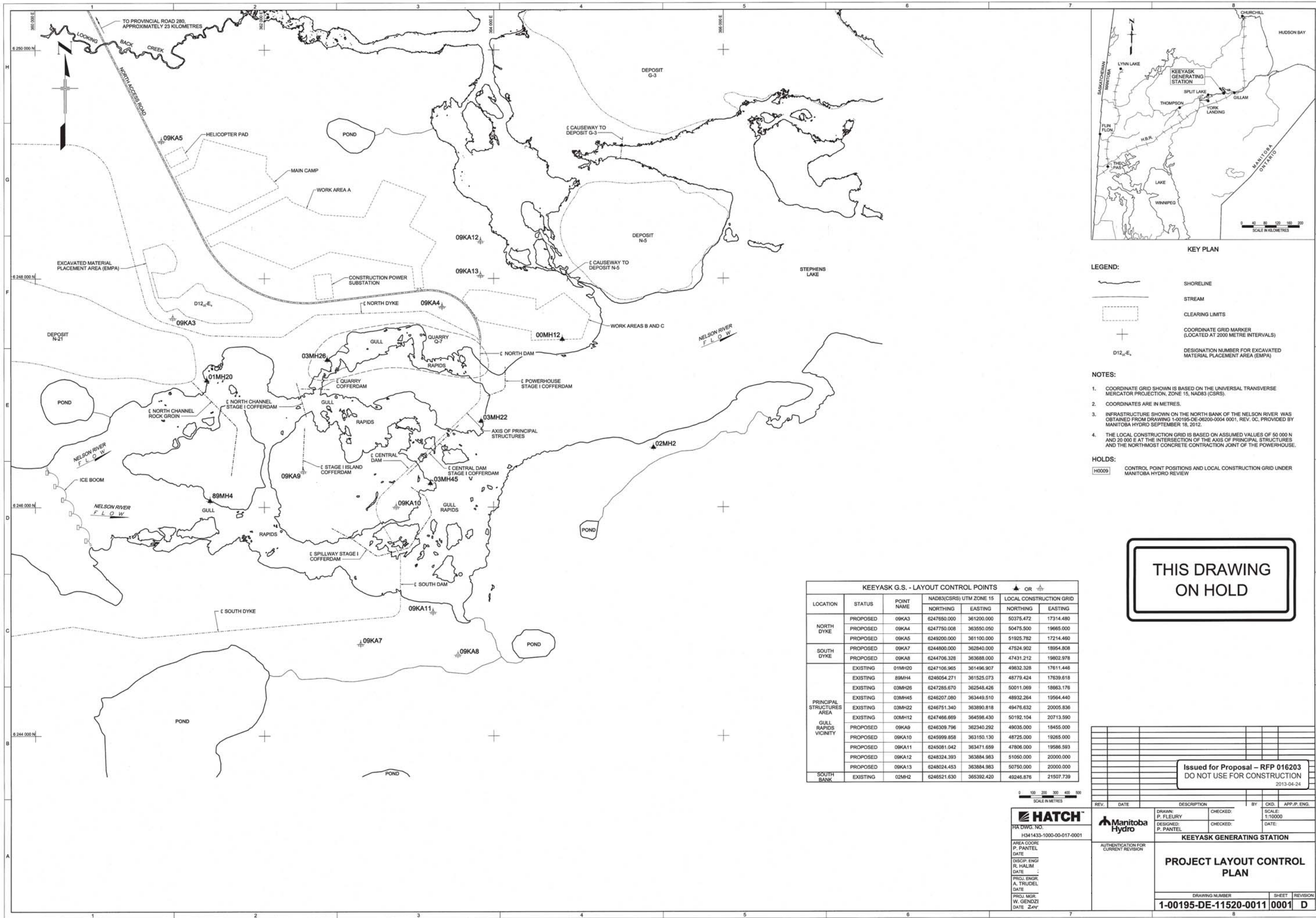
S.C.I. DWG NO ADDED 6/1/02



1-00111-DD-10100-0004 0001 00

H. G. ACRES & COMPANY LIMITED CONSULTING ENGINEERS NIAGARA FALLS CANADA	
THE MANITOBA HYDRO-ELECTRIC BOARD KELSEY GENERATING STATION	
GENERAL ARRANGEMENT OF DEVELOPMENT	
APPROVED	DATE AUG. 1960
SCALE	JOB No. 724
H.G. ACRES & COMPANY LIMITED	
PLATE I	

NO.	DATE	BY	CHKD.	APP.	REVISIONS
00	2003 12 10				



- KEY PLAN**
- LEGEND:**
- SHORELINE
  - STREAM
  - CLEARING LIMITS
  - COORDINATE GRID MARKER (LOCATED AT 2000 METRE INTERVALS)
  - DESIGNATION NUMBER FOR EXCAVATED MATERIAL PLACEMENT AREA (EMPA)

- NOTES:**
1. COORDINATE GRID SHOWN IS BASED ON THE UNIVERSAL TRANSVERSE MERCATOR PROJECTION, ZONE 15, NAD83 (CSRS).
  2. COORDINATES ARE IN METRES.
  3. INFRASTRUCTURE SHOWN ON THE NORTH BANK OF THE NELSON RIVER WAS OBTAINED FROM DRAWING 1-00195-DE-06200-0004 0001, REV. 0C, PROVIDED BY MANITOBA HYDRO SEPTEMBER 18, 2012.
  4. THE LOCAL CONSTRUCTION GRID IS BASED ON ASSUMED VALUES OF 50 000 N AND 20 000 E AT THE INTERSECTION OF THE AXIS OF PRINCIPAL STRUCTURES AND THE NORTH-MOST CONCRETE CONTRACTION JOINT OF THE POWERHOUSE.

**HOLDS:**

CONTROL POINT POSITIONS AND LOCAL CONSTRUCTION GRID UNDER MANITOBA HYDRO REVIEW

THIS DRAWING  
ON HOLD

KEYYASK G.S. - LAYOUT CONTROL POINTS						
LOCATION	STATUS	POINT NAME	NAD83(CSRS) UTM ZONE 15		LOCAL CONSTRUCTION GRID	
			NORTHING	EASTING	NORTHING	EASTING
NORTH DYKE	PROPOSED	09KA3	6247650.000	361200.000	50375.472	17314.480
	PROPOSED	09KA4	6247750.008	363550.050	50475.500	19665.000
	PROPOSED	09KA5	6249200.000	361100.000	51925.782	17214.460
SOUTH DYKE	PROPOSED	09KA7	6244800.000	362840.000	47524.902	18954.808
	PROPOSED	09KA8	6244706.328	363688.000	47431.212	19802.978
PRINCIPAL STRUCTURES AREA	EXISTING	01MH20	6247106.965	361496.907	49632.328	17611.446
	EXISTING	89MH4	6246054.271	361525.073	48779.424	17639.618
	EXISTING	03MH26	6247285.670	362548.426	50011.069	18863.176
	EXISTING	03MH45	6246207.060	363449.510	48932.264	19564.440
	EXISTING	03MH22	6246751.340	363890.818	49476.632	20005.836
	EXISTING	00MH12	6247466.669	364598.430	50192.104	20713.590
	EXISTING	09KA9	6246309.796	362340.292	49035.000	18455.000
GULL RAPIDS VICINITY	PROPOSED	09KA10	6245999.858	363150.130	48725.000	19265.000
	PROPOSED	09KA11	6245081.042	363471.659	47806.000	19586.593
	PROPOSED	09KA12	6248324.393	363884.983	51050.000	20000.000
SOUTH BANK	PROPOSED	09KA13	6248024.453	363884.983	50750.000	20000.000
	EXISTING	02MH2	6246521.630	365392.420	49246.878	21507.739

**HATCH**  
 HIA DWG. NO. H341433-1000-00-017-0001  
 AREA COORDINATOR: P. PANTEL  
 DATE: \_\_\_\_\_  
 DISCIPLINE ENGINEER: R. HALIM  
 DATE: \_\_\_\_\_  
 PROJECT ENGINEER: A. TRUDEL  
 DATE: \_\_\_\_\_  
 PROJECT MANAGER: W. GENOZZI  
 DATE: 24/04/2013

**Manitoba Hydro**

Issued for Proposal - RFP 016203  
 DO NOT USE FOR CONSTRUCTION  
 2013-04-24

REV.	DATE	DESCRIPTION	BY	CHKD.	APP.P. ENG.

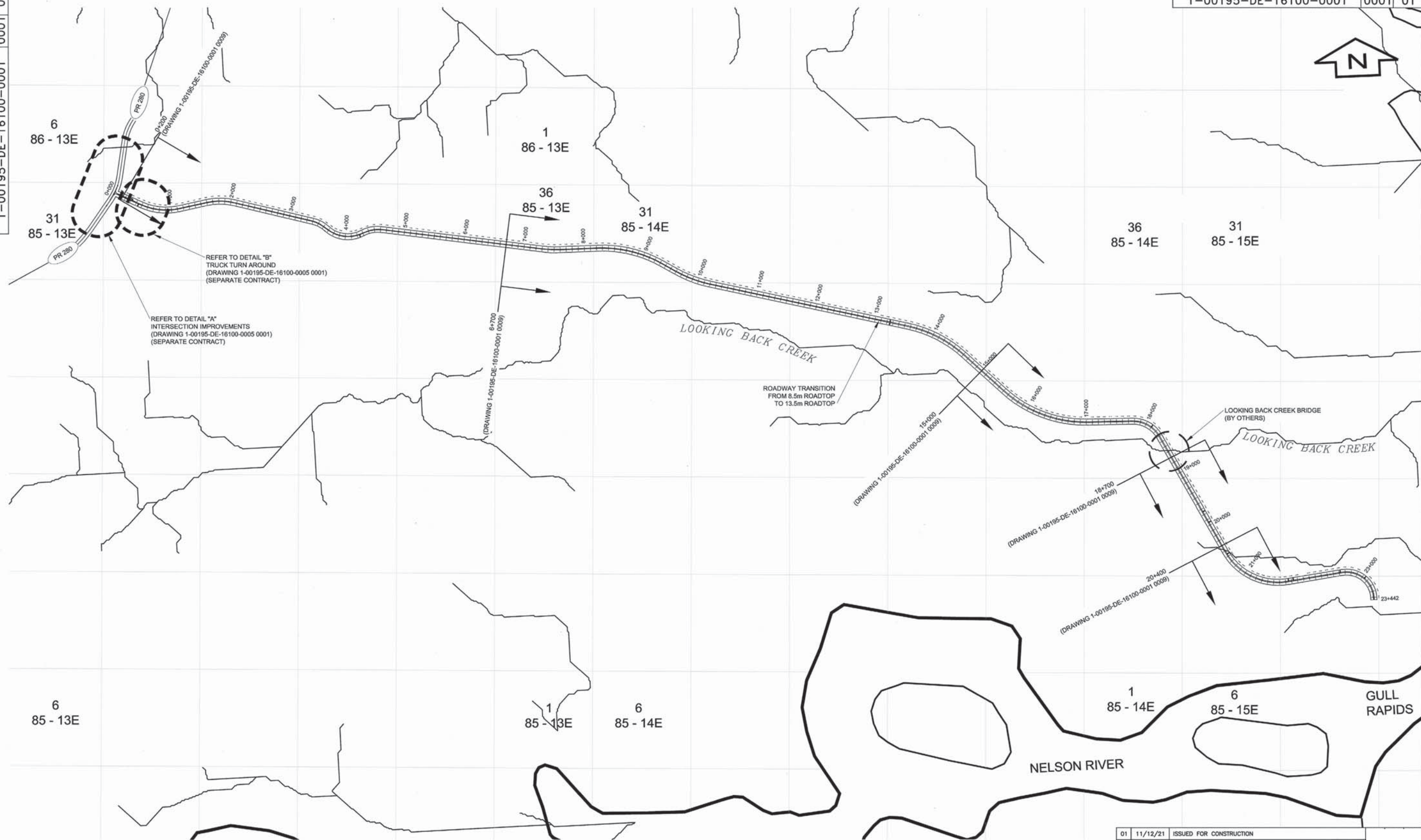
**KEYYASK GENERATING STATION**

**PROJECT LAYOUT CONTROL PLAN**

DRAWING NUMBER	SHEET	REVISION
1-00195-DE-11520-0011	0001	D

E SIZE - 671 x 902  
REV. 0001 01  
1-00195-DE-16100-0001  
FOR MICROFILM USE ONLY

1-00195-DE-16100-0001  
SHT. 0001  
REV. 01



REFER TO DETAIL "B"  
TRUCK TURN AROUND  
(DRAWING 1-00195-DE-16100-0005 0001)  
(SEPARATE CONTRACT)

REFER TO DETAIL "A"  
INTERSECTION IMPROVEMENTS  
(DRAWING 1-00195-DE-16100-0005 0001)  
(SEPARATE CONTRACT)

ROADWAY TRANSITION  
FROM 8.5m ROADTOP  
TO 13.5m ROADTOP

LOOKING BACK CREEK BRIDGE  
(BY OTHERS)

6  
85 - 13E

1  
85 - 13E

6  
85 - 14E

1  
85 - 14E

6  
85 - 15E

GULL RAPIDS

NELSON RIVER

NOTES:  
1. COORDINATES SUPPLIED BASED ON  
UNIVERSAL TRANSVERSE MERCATOR  
(UTM) NAD83 ZONE 15.



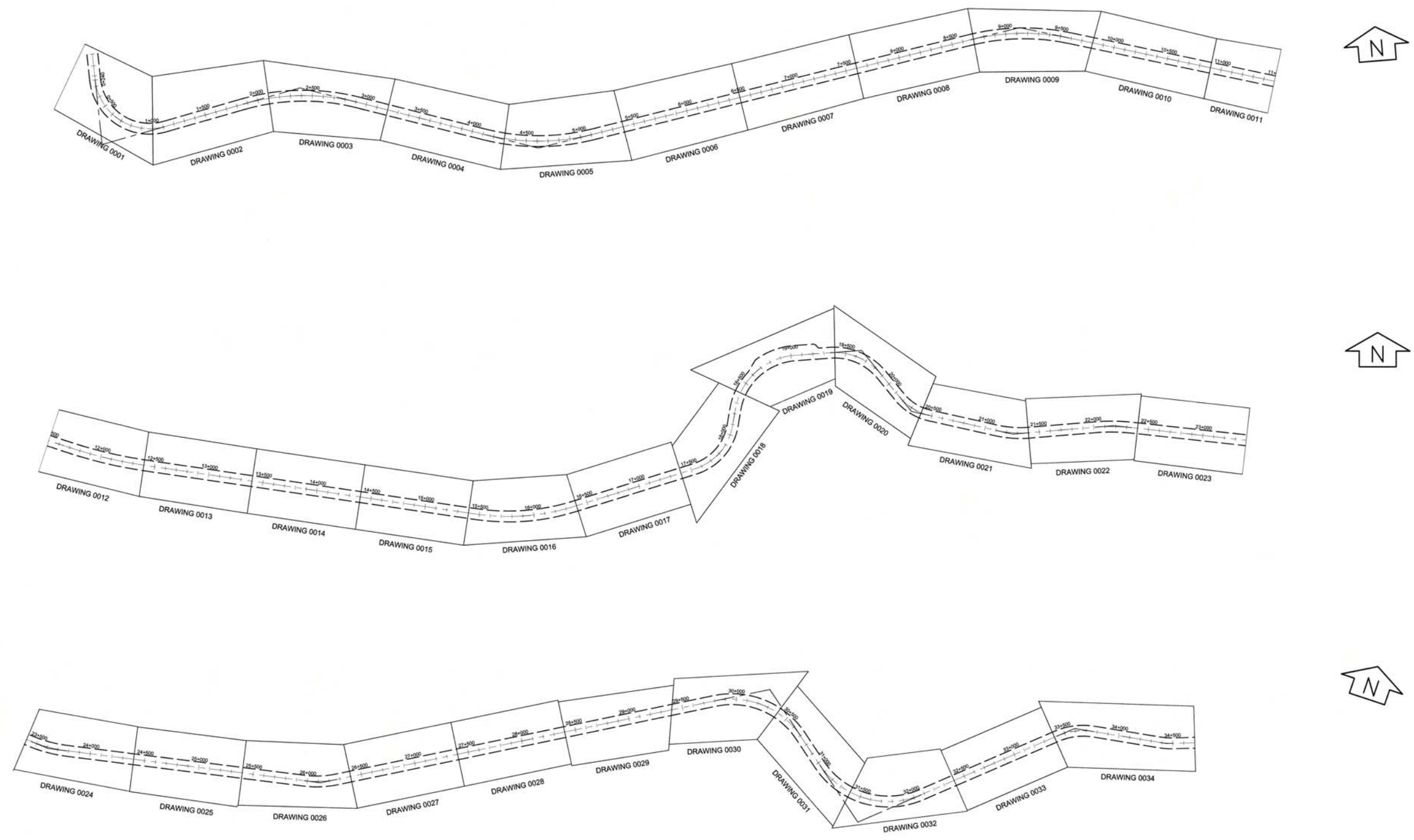
**APEGM**  
Certificate of Authorization  
Dillon Consulting Limited (MB)  
No. 1789 Date: MAY 30, 2011  
CONSULTANT PROJECT NUMBER: 08-9873

**AECOM**

DILLON CONSULTING  
SNC-LAVALIN  
This Drawing Prepared By: DILLON CONSULTING  
This document is the exclusive property of Manitoba Hydro and all rights are reserved. DILLON CONSULTING accepts no responsibility, and denies any liability whatsoever, to any third party that uses, reproduces, modifies, or relies on this document without DILLON CONSULTING's express written consent.

NO.	DATE	REVISIONS	WJK	DPK	NK
01	11/12/21	ISSUED FOR CONSTRUCTION			
00	11/05/30	ISSUED FOR TENDER			

MANITOBA HYDRO KEYYASK INFRASTRUCTURE PROJECT		
NORTH ACCESS ROAD SITE ACCESS ROAD (B)		
KEY PLAN		
DRAWN W.J. KAVANAGH	SHT. 0001 REV. 01	
CHECK D.P. KRAHN	1-00195-DE-16100-0001	
SCALE 1:25000	DATE MAY 30, 2011	



**SOUTH ACCESS ROADWAY  
GENERAL ARRANGEMENT PLAN**

**ISSUED FOR DNC**  
February 28, 2014



**METRIC**  
WHOLE NUMBERS INDICATE MILLIMETRES  
DECIMALIZED NUMBERS INDICATE METRES



**AECOM**  
DILLON CONSULTING  
SNC-LAWALIN  
This Drawing Prepared By: AECOM  
This document is the exclusive property of Manitoba Hydro and all rights are reserved. AECOM accepts no responsibility, and denies any liability whatsoever, to any third party that uses, reproduces, modifies, or relies on this document without AECOM's express written consent.

NOTED	NO.	DATE	ISSUED FOR DNC	REVISIONS	BY	CHKD.	APP.
	00	02/28/2014	ISSUED FOR DNC				

MANITOBA HYDRO
KEYYASK INFRASTRUCTURE PROJECT
SOUTH ACCESS ROAD
GENERAL ARRANGEMENT

DRAWN	CS,PB,PP
CHECK	BC,KR
SCALE	1:16000
DATE	02/28/2014

SHT.	REV.
0001	00

CONSULTANT PROJECT NUMBER: 60237881